



# Renaissance

## Cooking Systems

America's Best Value In Outdoor Kitchen Equipment

# America's Best Value in Outdoor Kitchen Equipment

Family owned with operations in Texas, Renaissance Cooking Systems brings each and every customer a superior grilling experience. Backed by over 70 years of experience, we are a name you can trust. Our products are manufactured with the best materials to bring your family peace of mind and years of grilling memories. We offer a wide range of products from grills, side burners, sinks, to refrigeration, doors, and drawers, we have all of the products you need to share your outdoor space with your family and friends. At Renaissance Cooking Systems we have feature-packed, affordable, high quality products. This is why we truly are *America's Best Value in Outdoor Kitchen Equipment.*



**We are proud to offer our newest line of products**  
***American Renaissance Grill***

*Made in the USA* and backed by a lifetime warranty. We offer three different sizes of grills and two side burners constructed of the highest quality 304 stainless steel. These products are packed with features that will keep you grilling for years.



# AMERICAN RENAISSANCE GRILL

Proudly Made in America





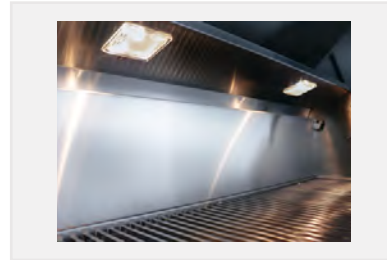
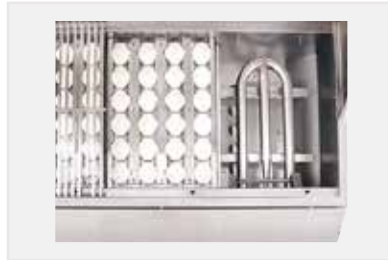
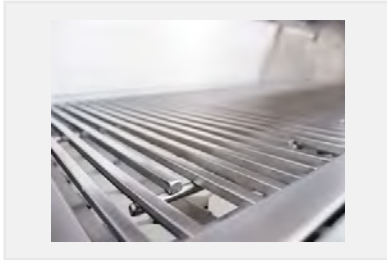
30" American Renaissance Grill - [ARG30](#)  
2 Burners - 50,000 Total BTU's  
754 Total Sq. In. Cooking Area  
Liner: [LJARG30](#)  
Cover: [GCARG30](#)



36" American Renaissance Grill - [ARG36](#)  
3 Burners - 75,000 Total BTU's  
910 Total Sq. In. Cooking Area  
Liner: [LJARG36](#)  
Cover: [GCARG36](#)



42" American Renaissance Grill - [ARG42](#)  
3 Burners - 75,000 Total BTU's  
1,082 Total Sq. In. Cooking Area  
Liner: [LJARG42](#)  
Cover: [GCARG42](#)



## Grill Features

- 304 Stainless Steel Housing
- 304 Tubular Stainless Burners
- 25,000 BTU's Per Burner
- Dual Interior Halogen Lights \*120V Required
- Blue LED Illuminated Control Knobs \*120V Required
- Sure-Strike Ignition
- Briquette Flavor Trays
- Oversized Commercial Knobs
- Ball Bearing Slide Out Drip Tray - Full Width
- 304 Solid Stainless Steel Exclusive Searmarx Grids
- Fold-Away Stainless Steel Warming Rack
- Rolled and Polished Seams
- 10" Deep Body Design
- Dual-Wall Body
- Easy-Lift Grill Lid
- Optional **AIR303642** Infrared Sear Burner
- Optional **ASG1** Stainless Steel Griddle
- Optional **ARG30ROTIS, ARG36ROTIS, ARG42ROTIS** Rotisserie Kits

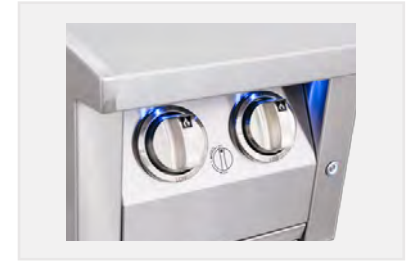


### Double Side Burner - **ASBSSB**

Liner: **LJASBSSB**

Cover: **ASBSSBC**

Two 18,000 BTU brass burners, removable lid, 304 stainless steel, LED blue lights, transformer included.



Our double side burner & pro burner are the perfect addition to any outdoor kitchen.



### Pro Burner Side Burner - **ASB3**

Liner: **LJASB3**

Cover: **ASB3C**

One 24,000 BTU brass burners & one 36,000 BTU stainless burner, removable lid, 304 stainless steel, wok ring, LED blue lights & transformer included.



## Side Burner Features

- 304 Stainless Steel Housing
- Sure-Strike Ignition
- Blue LED Illuminated Control Knobs \*120V Required
- Upgraded, Oversized Commercial Knobs
- Rolled and Polished Seams



# CUTLASS PRO SERIES

Designed for the weekend cook, as well as the professional chef

## Features

- 304 Stainless Steel Housing
- Cast Stainless Steel Burners
- Dual Interior Halogen Lights \*120V Required
- Led Illuminated Control Knobs \*120v Required
- Sure-Strike Ignition
- Heat Zone Separators & Heat Tents
- 20" Stainless/Ceramic Infrared Rear Burner
- Stainless Rotis Motor & Heavy Forks/Rod
- Oversized Commercial Knobs
- Full Width Slide-out Drip Tray
- Solid Stainless Steel Cooking Grids & Warming Rack
- Fuel Type Is Field Convertible - NG/LP
- Optional **RSSG2** Griddle
- Optional **RSSG4** Dual Plated Griddle
- Optional **RST3042** Smoker Tray
- Optional **IR30** Infrared Sear Burner



**30" Cutlass Pro Grill - [RON30A](#)**  
**3 Main Burners - 45,000 Total BTU's**  
**1 Back Burner - 12,500 BTU's**  
**840 Total Sq. In. Cooking Area**  
Cart: [RONMC](#) / Liner: [LJRON30](#)  
Cart Cover: [GC30C](#)  
Drop-In Cover: [GC30DI](#)



**38" Cutlass Pro Grill - [RON38A](#)**  
**4 Main Burners - 60,000 Total BTU's**  
**1 Back Burner - 12,500 BTU's**  
**1,034 Total Sq. In. Cooking Area**  
Cart: [RONKC](#) / Liner: [LJRON38](#)  
Cart Cover: [GC42C](#)  
Drop-In Cover: [GC38DI](#)



**42" Cutlass Pro Grill - [RON42A](#)**  
**4 Burners - 60,000 Total BTU's**  
**1 Back Burner - 12,500 BTU's**  
**1,142 Total Sq. In. Cooking Area**  
Cart: [RONJC](#) / Liner: [LJRON42](#)  
Cart Cover: [GC42C](#)  
Drop-In Cover: [GC42DI](#)

All Cutlass Pro grills are backed by a lifetime warranty.  
That means performance with peace of mind!



#### Cutlass Pro Grill Carts

- 304 Stainless Steel Body
- Two Fold-Down Side Shelves
- Double Access Doors
- Heavy-Duty Swivel Casters
- Propane Tank Slide Out Tray



\* Shown [RON30A](#) & [RONMC](#)





\*\*

# PREMIER SERIES

Bring your family and friends or the entire neighborhood together

## Features

- Premium Stainless Steel Housing
- Sure-strike Ignition With Manual Flash Tube
- Briquette Flavor Trays
- Stainless Steel Tubular Burners
- Solid Stainless Steel Cooking Grids & Warming Rack
- L Models Include Dual Interior Halogen Lights & LED Illuminated Control Knobs \*120v Required
- Oversized Commercial Knobs
- Full Width Slide-out Drip Tray
- Fuel Type Is Field Convertible - NG/LP
- Optional **RSSG1** Griddle
- Optional **RSSG3** Dual Plated Griddle
- Optional **RST2632** Smoker Tray
- Optional **IR2632** Infrared Sear Burner
- Optional **RJC32ROTIS, RJC40ROTIS** Rotisserie Kits





**26" Premier Grill - RJC26A**  
**3 Main Burners - 36,000 Total BTU's**  
**546 Total Sq. In. Cooking Area**  
 Cart: RJCSC / Liner: LJRJC26  
 Cart Cover: GC26C  
 Drop-In Cover: GC26DI



**32" Premier Grill - RJC32A**  
**4 Main Burners - 48,000 Total BTU's**  
**1 Back Burner - 12,000 BTU's**  
**710 Total Sq. In. Cooking Area**  
 Cart: RJCMC / Liner: LJRJC32  
 Cart Cover: GC30C  
 Drop-In Cover: GC30DI



**40" Premier Grill - RJC40A**  
**5 Main Burners - 60,000 Total BTU's**  
**1 Back Burner - 12,000 BTU's**  
**906 Total Sq. In. Cooking Area**  
 Cart: RJCLC / Liner: LJRJC40  
 Cart Cover: GC42C  
 Drop-In Cover: GC42DI



**Premier Grill Carts**

- Stainless Steel Body
- Two Side Shelves
- Double Access Doors
- Heavy-Duty Swivel Casters

\* Shown RJC32AL & RJCMC

*Upgrade the premier grills to the I series. Dual interior halogen lights & LED illuminated control knobs!*



**32" Premier Grill - RJC32AL**  
 Upgraded with Dual Interior Halogen Lights & LED Illuminated Control Knobs.



**40" Premier Grill - RJC40AL**  
 Upgraded with Dual Interior Halogen Lights & LED Illuminated Control Knobs.



# SIDE BURNERS & ACCESSORIES

A side burner offers the convenience of range top cooking and grilling simultaneously



## Cutlass Pro Double Burners - **RDB1** / **\*RDB1EL**

Liner: **LJRDB1**

Cover: **RDB1ELC**

Two 12,000 BTU brass burners, removable lid, 304 stainless steel.

\*LED blue lights when installed with Cutlass Pro Series Grills. RSSG2 fits.



## Cutlass Pro Power Burner - **RSB3A**

Liner: **LJR3B3A**

Cover: **RDB1ELC**

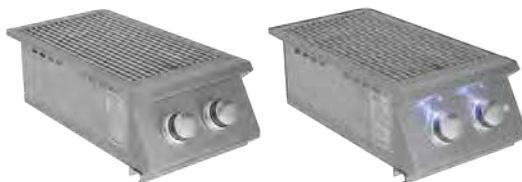
Two solid brass burners total 60,000 BTU's, removable lid, 304 stainless steel, wok ring, LED blue lights & power transformer included. RSSG1 fits.



## Cutlass Single Burner- **RSB1C**

Cover: **RSB1C**

One 12,000 BTU brass burner, removable lid, 304 stainless steel.



## Premier Double Burners - **RJCSSB** / **\*RJCSSBL**

Liner: **LJRJCSSB**

Cover: **RDB1ELC**

Two 12,000 BTU brass burners, removable lid, 304 stainless steel.

\*LED blue lights. Transformer included. RSSG2 fits.



\* Shown RSB3A



## Insulated Liners

The insulated liner is required when installing the grills or side burners into a cabinet constructed with combustible materials. Double-lined stainless steel construction for maximum strength & protection.

See grills and side burners for item #



## Access Doors w/ Lock

304 stainless steel, recessed.

Two sizes: 6x6" / 8x8"

RAD66 / RAD88



## Propane Hose & Regulator

3/8" flare fitting on one end & POL to screw on the outside threads of a propane tank. Low pressure, preset settings.

RONHK



## Stainless Steel Flex Hoses

To connect your gas grill or side burner to your gas supply. Available in two lengths, 36" & 48" and either 3/8" or 1/2" flare fittings.

SSFLEX6436 / SSFLEX6448

SSFLEX8436 / SSFLEX8448



### **Stainless Steel Griddles**

Made of heavy duty 3/8" stainless steel, integrated side handles, a grease trough and raised edges. Available in two sizes.

RSSG1: 14 1/2"W x 18"D

RSSG2: 10 1/4"W x 19 1/2"D



### **Dual Plated Griddles**

Dual-plate cooking system. Stainless steel top with a cast iron layer underneath. Side handles, a removable grease trough and raised edges. Available in two sizes.

RSSG3: 14 1/4"W x 17 3/4"D

RSSG4: 14 1/4"W x 19 3/4"D



### **Stainless Steel Griddle**

Made of polished 304 stainless steel, a grease trough and raised edges. Sits directly on cooking grids.

ASG1: 17 1/2"W x 12"D



### **Rotisserie Kits**

Upgrade your Premier or ARG grill with a rotisserie kit. Kit includes: rotisserie rod, handle, 2 forks, balance and motor.

ARG30ROTISS / ARG36ROTISS / ARG42ROTISS

RJC32ROTISS / RJC40ROTISS



### **Vent Hoods**

With a 1200 CFM blower you can quickly exhaust excess smoke. Fully adjustable variable speed motors and dimmable dual halogen lights.

Available in two sizes.

RVH36: 36"W x 30"D x 18"H

RVH48: 48"W x 30"D x 18"H



### **Vent Hood Duct Covers**

Encloses the space between the top of the vent hood and ceiling or soffit by extending the height of the hood.

RVH36DC: 36"W x 15"D x 12"H

RVH48DC: 48"W x 15"D x 12"H



### **Vent Hood Spacers**

Extends the hood from the wall to give better coverage over the grill when needed.

RVH36SP4: 36"W x 4"D x 18"H

RVH36SP8: 36"W x 8"D x 18"H

RVH48SP4: 48"W x 4"D x 18"H

RVH48SP8: 48"W x 8"D x 18"H



### **Vent Hood Templates**

Mounting template to attach the vent hoods to the wall.

RVH36SPT: 36"W x 1/2"D x 18"H

RVH48SPT: 48"W x 1/2"D x 18"H



### **Infrared Sear Burners**

Sear burners replace the left main burner in your grill to turn up the heat and get those perfect sear marks.

IR2632 / IR30 / AIR303642



### **Smoker Trays**

Add some extra flavor to your food by adding your favorite wood chips. This will allow you to get that great wood flavor when cooking with gas.

RST2632 / RST3042



### **Outdoor Kitchen Vent**

To ensure the safety and protection of your outdoor kitchen, vents are required every 4 feet. These help vent the built up heat beneath your grill.

RVNT1



### **Covers**

Keep your grill or side burner safe from the outdoor elements. Crack resistant, 2-ply vinyl, UV protection, flannel inside so your stainless won't scratch.

See grill or side burner for item #



# DOORS & DRAWERS

304 stainless steel, non-protruding handles & lifetime warranty

*Our sleek line of Valiant series doors and drawers have everything you could want. They enhance the design and function of your outdoor kitchen.*



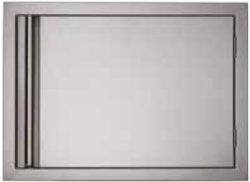
**Vertical Door - VDV1**

Overall: 17"W x 22"H  
Reversible



**Large Vertical Door - VDV2**

Overall: 20"W x 27"H  
Reversible



**Horizontal Door - VDH1**

Overall: 27"W x 20"H  
Reversible



**Double Door - VDD1**

Overall: 33"W x 22"H



**Large Double Door - VDD2**

Overall: 45"W x 22"H



**Dry Pantry- VDP1**

Overall: 33"W x 21"D x 22"H  
Fully enclosed. Removable shelf.



\* Shown VLSD1 & VDP1





### Two Drawer/LP Tank Drawer - **VDCL1**

Overall: 33"W x 20 3/4"D x 22"H

Two fully enclosed, soft close drawers, LP tank drawer.



### Two Drawer/Door - **VDC1**

Overall: 33"W x 20 1/2"D x 22"H

Fully enclosed, soft close drawer unit.



### Triple Drawer - **VTD3**

Overall: 17"W x 20 1/2"D x 30 1/4"H

Fully enclosed, soft close unit.



### Two Drawer Combo - **VTHC1**

Overall: 17"W x 20 1/2"D x 30 1/4"H

Fully enclosed, soft close drawer unit, with paper towel holder.



### Double Drawer - **VDR1**

Overall: 17"W x 20 1/2"D x 22"H

Fully enclosed, soft close unit.



### Kamado Drawer - **VLSD1**

Overall: 31"W x 27 1/2"D x 19"H

Fully enclosed, soft close unit. Supports up to a 600 pound kamado grill.



### Warming Drawer - **RWD1**

Overall: 36"W x 21"D x 11 1/2"H

Fully enclosed, 120 volt, temperature ranges 50°F - 230°F.



### Accessory & Tool Drawer - **VDU1**

Overall: 25 1/2"W x 20"D x 6"H



### Trash Drawer - **VTD1**

Overall: 20"W x 16"D x 27"H

Includes one bin.



### Double Trash Drawer - **VTD2**

Overall: 20"W x 27 1/4"D x 27"H

Includes two bins.



### Narrow Trash Drawer - **VTD4**

Overall: 14"W x 25 1/4"D x 26"H

Includes one bin.



### Charcoal Caddy Drawer - **VDCP1**

Overall: 14"W x 19 3/4"D x 26 1/2"H

Includes one bin.

# SINKS & REFRIGERATION

Bring a little bit of your indoor kitchen outdoors



**Stainless Sink - RSNK1**

Double faucet, strainer, 23 gauge stainless.

Overall: 15" x 15"



**Stainless Undermount Sink - RSNK2**

Single handle pull-down faucet, strainer, 360° swing angle, 18-gauge, hot & cold water.

Overall: 21" x 15"

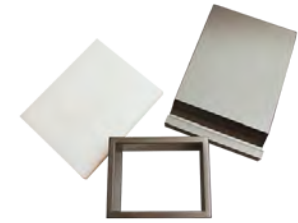


**Cutting Boards - RCB1 / RCB2**

Plastic. Fits RSNK1 / RSNK2

Overall: 12 7/8" x 10 7/8"

Overall: 23 1/4" X 18 1/4"



**Trash Chute & Cutting Board - VTC1**

Plastic cutting board & stainless chute & removable lid.



**Door Upgrade Kits - SSFDLB / SSFDLRB**

304 stainless steel. SSFDLB (swing left), SSFDLRB (swing right) Fits: REFR1A



**Trim Kits - See Fridge**

304 stainless steel.



**Condensate Pump - RPUMP**

For use with REFR3 when gravity feed drain is not available.

\* Shown RWC1 with RTR5





### Refrigerator - **REFR1A**

Trim Kit: **RTR1A**

4.5 Cu. Ft., reversible door, 304 stainless steel locking door, interior light, one drawer, automatic defrost, adjustable thermostat.

Overall: **33"H X 20"W**

Optional door upgrade: SSFDLB / SSFDLRB



### Refrigerator - **REFR2**

Trim Kit: **RTR2**

5.6 Cu. Ft., reversible door, stainless steel construction, **certified for outdoor use**, LED adjustable thermostat & locking door.

Overall: **32"H X 24"W**



### Ice Maker - **REFR3**

Trim Kit: **RTR3**

Reversible door, stainless steel construction, **certified for outdoor use**, adjustable sized cubes, 26 lb storage capacity, 44 lbs per day production.

Overall: **33"H X 15"W**

Optional: RPUMP



### Two Drawer Refrigerator - **REFR4**

Trim Kit: **RTR4**

5.3 Cu. Ft., two drawer, stainless steel construction, **certified for outdoor use**, interior lights & LED controls.

Overall: **34"H X 24"W**



**NEW**

### Narrow Refrigerator - **REFR5**

Trim Kit: **RTR5**

304 stainless steel locking glass door, **certified for outdoor use**, interior LED light, adjustable thermostat.

Overall: **33"H X 15"W**



**NEW**

### Kegerator - **REFR6**

Trim Kit: **RTR6**

6.6 Cu. Ft., 304 stainless steel locking door, **certified for outdoor use**, interior halogen light, adjustable thermostat, dual keg taps, CO2 cylinder, regulator, drip tray & keg coupler.

Overall: **34"H X 24"W**



**NEW**

### Wine Cooler - **RWC1**

Trim Kit: **RTR5**

304 stainless steel locking glass door, dual interior lights, dual temperature zones, 4 wooden shelves.

Overall: **33"H X 15"W**



### Drop-In Cooler - **VIC2**

304 Stainless steel, fully insulated, includes strainer & plug.

Overall: **13"H X 23" W**



*Take your outdoor kitchen to the next level with refrigerators, wine cooler, kegerator and ice maker.*

\* Shown VIC2 & VTC1



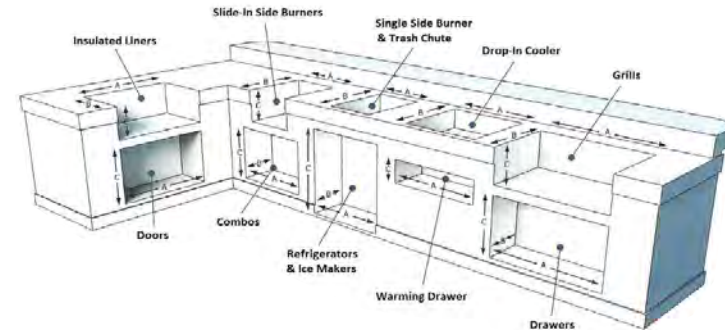
**Warranty -** All American Renaissance Grills and side burners are warranted to be free from manufacturer defects for the lifetime of the original owner. All RCS Cutlass Pro Series Grills, Cutlass and Cutlass Pro side burners, Valiant doors and drawers are warranted to be free from manufacturer defects for the lifetime of the original owner. All RCS Premier Series Grills and side burners are warranted to be free from manufacturer defects for 5 years. All other products carry a one-year warranty. This RCS warranty is effective for product sales beginning January 1st, 2020. This warranty excludes normal surface corrosion, discoloration, surface scratches and surface rust which may occur. Improper maintenance, salt spray, chemicals, pesticides will affect the look and integrity of the components of these products. RCS will not be responsible for any damage caused as a result of not following owner's manual instructions. This nontransferable warranty is limited to the replacement of original (one-time) defective parts, does not include shipping and labor to remove or install replacement parts, if necessary. The owner must retain and submit their original receipt with any warranty claim to receive warranty parts. The warranty applies to the original owner only. Coverage is for residential use only, no commercial applications apply. No registration required.

Model	Product Description	Cut Out (Inches)		
		Width ( A )	Depth ( B )	Height ( C )
LJARG30	Liner Jacket, ARG30	30 3/4	24 3/8	11 3/8
LJARG36	Liner Jacket, ARG36	36 3/4	24 3/8	11 3/8
LJARG42	Liner Jacket, ARG42	42 3/4	24 3/8	11 3/8
ARG30	30"ARG Grill	28 5/8	23 1/4	10 1/4
ARG36	36"ARG Grill	34 5/8	23 1/4	10 1/4
ARG42	42"ARG Grill	40 5/8	23 1/4	10 1/4
ASB3	Pro Side Burner	20 7/8	22 1/2	10 1/4
LJASB3	Liner Jacket, ASB3	23 7/8	24 1/4	11 1/4
ASBSSB	Double Side Burner	13 1/5	23 1/4	10 1/4
LJASBSSB	Liner Jacket, ASBSSB	15 3/8	24 1/8	11 3/8
LJRON30	Liner Jacket, RON30A	35 1/2	21 1/4	11 3/4
LJRON38	Liner Jacket, RON38A	43 5/8	21 1/4	12 1/4
LJRON42	Liner Jacket, RON42A	47 1/2	21 1/4	11 3/4
RON30A	30" Cutlass Pro Grill	33	20	11
RON38A	38" Cutlass Pro Grill	41 1/4	20	11
RON42A	42" Cutlass Pro Grill	45	20	11
LJRJC26	Liner Jacket, RJC26A	26	22	9 5/8
LJRJC32	Liner Jacket, RJC32A, RJC32AL	33	22	9 5/8
LJRJC40	Liner Jacket, RJC40A, RJC40AL	40 1/2	22	9 1/4
RJC26A	26" Premier Grill	23 1/2	21 1/4	8 1/4
RJC32A   RJC32AL	32" Premier Grill	30 5/8	21	8 1/4
RJC40A   RJC40AL	40" Premier Grill	37 3/4	21	8 1/4
RAD66	Recessed Access Door - 6 x 6	6 1/2	-	6 3/8
RAD88	Recessed Access Door - 8 x 8	8 5/8	-	8 3/8
RWD1	Electric Warming Drawer	34 1/2	21	10 1/8
VDC1	Double Drawer/Door Combo	30 1/2	22	19 1/2
VDCL1	Double Storage Drawer	30 1/2	20 3/4	19 1/2
VDCP1	Charcoal Caddy or Pellet Drawer	11 1/2	25 1/4	24
VDD1	Double Door	30 1/2	-	19 1/2
VDD2	Double Door - Large	42 1/2	-	19 1/2
VDH1	Horizontal Door	24 1/2	-	17 1/2
VDP1	Dry Pantry	30 1/2	21	19 1/2
VDR1	Double Drawer	15	22	19 1/2

Model	Product Description	Cut Out (Inches)		
		Width ( A )	Depth ( B )	Height ( C )
VDU1	Accessory & Tool Drawer	24	21	4
VDV1	Vertical Door	14 1/2	-	19 1/2
VDV2	Vertical Door - Large	17 1/2	-	24 1/2
VLSD1	Under-Kamado Drawer/Shelf	30 1/4	27 1/2	19
VTD1	Trash/Recycle Drawer	17 7/8	17 1/2	25
VTD2	Double Trash/Recycle Drawer	17 5/8	27 1/2	24 5/8
VTD3	Triple Drawer	15 1/2	22	27 3/4
VTD4	Narrow Trash Drawer	11 3/4	19 1/2	24
VTDH1	Double Drawer Combo	15 1/2	22	27 3/4
LJRDB1	Liner Jacket, RDB1/RDB1EL	14 3/8	20 1/4	9 1/4
LJRJCSSB	Liner Jacket, RJCSSB	12 7/8	22 1/8	9 5/8
LJRSB3A	Liner Jacket, RSB3A	16	20 1/8	10 5/8
RDB1   RDB1EL	Cutlass Double Side Burner	12	19	8
RJCSSB   RJCSSBL	Premier Double Side Burner	10 3/4	21	8
RSB1	Cutlass Single Side Burner	7 3/4	15 1/2	-
RSB3A	Pro Side Burner W/ Blue LEDs	14	18 5/8	9 1/4
REFR1A	Refrigerator	20 1/4	22	33
REFR2	Refrigerator	24	27	32 7/8
REFR3	Ice Maker	15	24	33 1/2
REFR4	Two Drawer Refrigerator	24	23 3/4	34 1/4
REFR5	Narrow Refrigerator	15 1/4	24	34 1/4
REFR6	Kegeator	24 1/8	25	34 1/4
RWC1	Wine Cooler Refrigerator	15 1/4	24	34 1/4
RSNK1	Sink & Faucet	14 3/8	14 3/8	-
RSNK2	Undermount Sink & Faucet	21	15 3/4	-
VTC1	Trash Chute/Cutting Board	6 1/2	8	4
RTR1A	Trim Kit, REFR1A	21	-	33
RTR2	Trim Kit, REFR2	24 1/2	-	33 1/4
RTR3	Trim Kit, REFR3	16 3/4	-	34
RTR4	Trim Kit, REFR4	25	-	34 1/2
RTR5	Trim Kit, REFR5 & RWC1	See Website		
RTR6	Trim Kit, REFR6			
RVNT1	Ventilation Panel	12 1/2	-	3 1/2
VIC2	Drop-In Cooler/ Ice Container	23 1/4	17 1/4	13

All cut-out dimensions are for reference only. Specifications are subject to change without notice. Please refer to RCSGasGrills.com for the most up to date measurements and specifications.

You may also check our website, [RCSGasGrills.com](http://RCSGasGrills.com), for more information on using, servicing, or cooking on your new RCS grill or reach out to us at [Info@RCSGasGrills.com](mailto:Info@RCSGasGrills.com).



\*\* Images Provided by  
TexasCustomPatios.com  
11391 Meadowglen Ln. Suite B.  
Houston, TX 77082