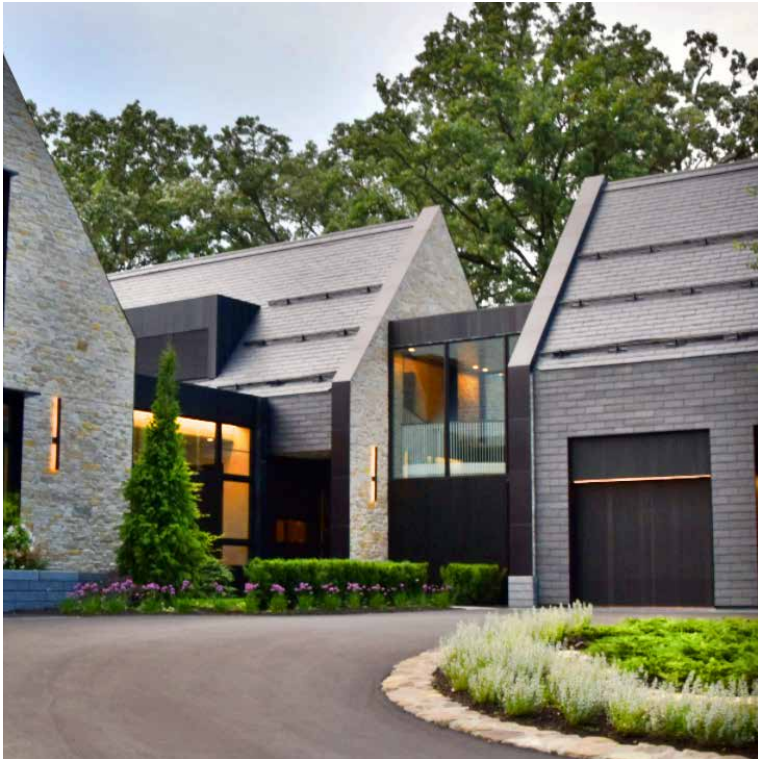


Residential Retreats



SUMMER HOMES BECOME YEAR-ROUND RESIDENTIAL RETREATS WHEN CLAD WITH NATURAL SLATE

Weekend jaunts to private lake houses or mountain cottages are increasingly popular. Many of these getaway homes, even those well insulated, can be extremely cold during winter months, and uncomfortably warm during summertime.

CUPACLAD's rainscreen systems help achieve year-round thermal comfort. This real slate cladding material is nature-made, sustainable, virtually maintenance free, and comes with a 100-year slate warranty!

An old "summer lake house" on the outskirts of Minneapolis, went through a total renovation. Charles Peterson, AIA LEED AP, Senior Project Designer at Aulik Design Group, stated, "The performance of this home and the durable exterior shell are extraordinary. We designed and built the home in accordance with the Department of Energy's Zero Energy Ready Home Program. It was important to select material that were durable, sustainable, and beautiful. Aesthetically, we were searching for a cladding material that would work not only on the vertical planes but also on the roof planes." Peterson continued.

"CupaClad offers opportunities for residential designers and builders to get very creative," stated Raven Tschida, CupaClad's US Marketing Manager. "Our product line can be specified for modern, traditional or mixed-media design exteriors. These specs can be for exterior rainscreen or direct-apply applications. The horizontal slate modules can be integrated with just about any high-performance exterior material, and it is easy to install."



Charles Peterson, AIA LEED AP,
Senior Project Designer at Aulik Design Group

Photography courtesy of Aulik Design



A couple from New York approached architect Richard Pedranti regarding a weekend retreat home they purchased in Spring Lake, New Jersey. They wanted an “extremely substantial” and also “energy efficient” product. A decision was made to tear the existing 2,000 square foot structure down, replacing it with a Net Zero building that could be accessible for weekends year-round. “We wanted something that ultimately not only looked great, but also performed at optimal levels,” stated Pedranti.



Richard Pedranti, architect

“Soon afterwards, we were introduced to a natural slate rainscreen system that was new to the states, but for years had been highly successful throughout Europe and Scandinavia. The large windows specified earlier for this house, complemented the CupaClad material, and vice versa,” continued Pedranti.

“I want every step of every project to be pre-planned . . . and, I’m generally at the jobsite to ensure everything is architecturally flawless. I must say that this CupaClad installation, my first as the specifier, was indeed, perfect . . . from the first samples to the installation process. It was a pleasure to work with the CupaClad product line,” concluded Pedranti. “And clearly, this was a perfect project.”

Photography courtesy of Jeffrey Totaro

