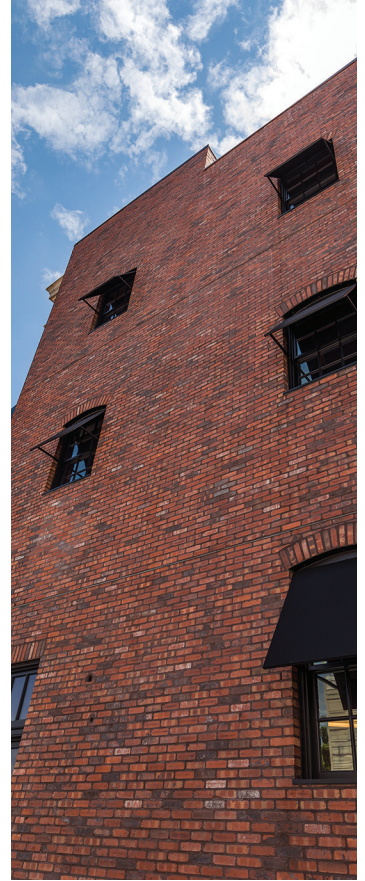
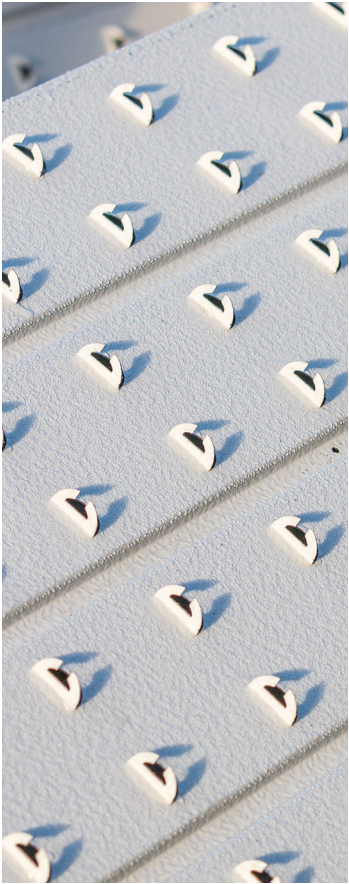




Glen-Gery

THIN TECH®



LEADING THE WAY IN THIN MASONRY TECHNOLOGY.



The most
advanced
thin veneer
masonry
support
system ever
designed.

Glen-Gery Thin Tech® is a mechanical support and spacing panel for thin masonry veneers. The most advanced thin veneer panel system ever designed. Each thin brick, tile or stone is supported by our patented support ties that mechanically interlock the masonry veneer to the panel.



Mounting Glen-Gery thin brick to Thin Tech panel (Elite).

Thin Tech Features and Benefits:

Patented support tie configuration placed on a 76 degree angle

- Allows the mortar to surround the support tie creating a positive masonry lock between the brick mortar and panel



Thin Tech support tie at 76 degree angle.

Stucco embossed texture

- Provides a built-in weep system on both sides of panel for moisture control
- Creates greater surface area for maximum adhesion between veneer and panel

26-gauge architectural grade steel

- High fastener pull-through strength for panel support and integrity
- Hardened steel sheets help brace wall, minimizing wall racking
- Allows fastening anywhere through the panel for even weight distribution or loading on the wall, using industry standard fasteners
- Protected by a zinc coating plus a thermal set coating

Before



During



After

Why Thin Tech?

Simple support – No relief angles or foundations needed for support. Panels are attached with screw fasteners provided by Glen-Gery.

Continuous rigid insulation compatible – Thin Tech fasteners are available in lengths to easily accommodate installations with up to 3" of rigid foam insulation.

Superior drainage and drying – The 3/8" space created by the channels of Thin Tech Elite panel can eliminate the need for a second layer of WRB. Alternately, a drainage mat can be used with Thin Tech Classic panels.

Mechanically secures most thin veneer types – Patented angled support ties mechanically bond each unit to the panel through the mortar joint, without any additional action required by the installer and no need for special slotted units, or special back surface texture such as keyed or dovetail backs.

Performance verified – Available reports include water penetration resistance (ASTM E331), structural performance (wind load deflection ASTM E330), shear bond strength (ASTM C297), fastener pull through, fastener withdrawal (ASTM D1037), and corrosion resistance (salt spray, ASTM B117) and other data. NFPA 285 compliant.

More size options – Standard Thin Tech panels can accommodate a variety of masonry unit thicknesses from 1/2" to 1-1/4" and heights from 2-1/4" to 11-5/8". Panels for unit heights up to 24" are available as special order for limited applications.

Glen-Gery Thin Tech applications



Glen-Gery is the only brick manufacturer to produce a thin veneer metal panel system for brick and stone that is suitable for exterior and interior usage. Offered in the traditional Classic and high-performance Elite series, each are tailored to the needs of specific applications. Glen-Gery Thin Tech products are offered with extended warranties lasting up to fifty years.



Commercial/Industrial



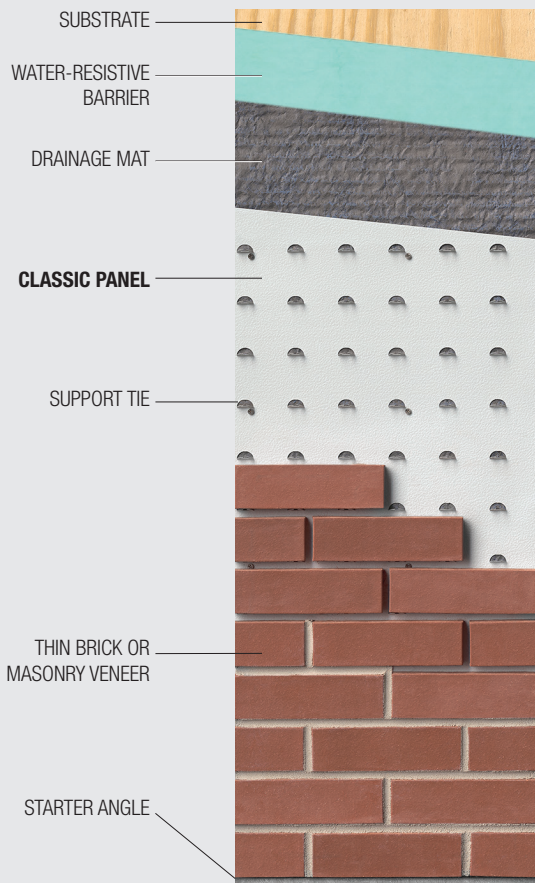
Residential



Interiors

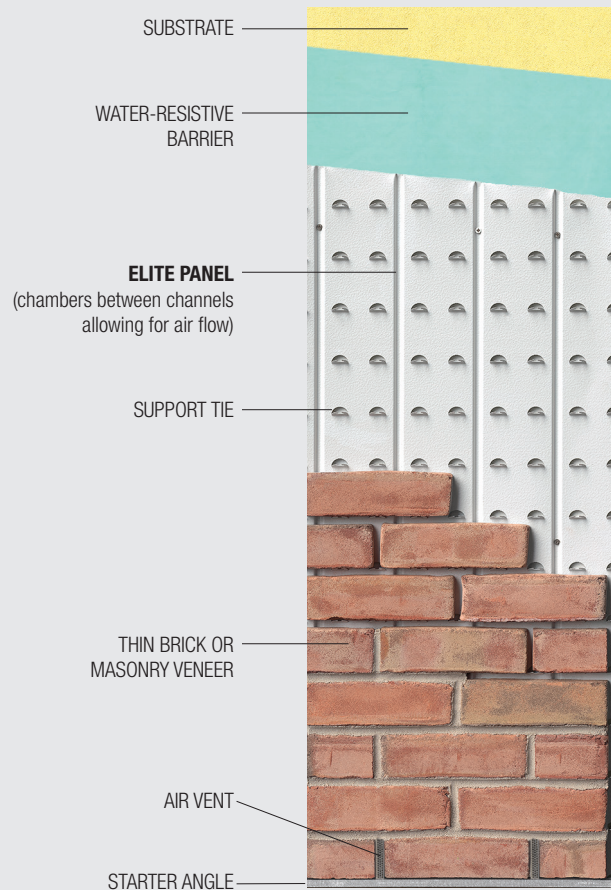
Thin Tech Classic Panel

Thin Tech Classic offers the thinnest, most resilient masonry veneer support structure specifically designed to accommodate thin brick. The Classic series works in conjunction with traditional mortar to secure the veneer.



Thin Tech Elite Panel

Thin Tech Elite is the most advanced masonry support system ever designed. It features all the advantages of the Classic series, but with enhanced product performance: superior drainage, ventilation, pressure equalization and bond strength.



Thin Tech solves the weather problem

Wind is one of the main contributing forces causing rain penetration in a building. When wind blows against the face of a building, it forces water through even the smallest opening. A wall utilizing rain screen technology is designed to counteract the pressure of the wind. When wind hits the Glen-Gery Thin Tech Elite wall it forces air into the airflow chambers, causing the chambers to reach the same pressure as the wind; thus the net pressure difference across the cladding is near zero. As a result, the wall pressure is equalized and the driving force for pressure-induced water penetration is eliminated.

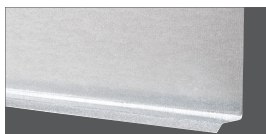


Product	Size	Weight	Packaging	Coverage (Approximate)
Thin Tech support tie ledge panel* (Classic or Elite)	48" x 48" (nominal)	16 lbs. each	As needed	16 sq. ft./panel
Thin Tech corner support	48" x 6" x 6" (nominal)	3.5 lbs. each	As needed	4 linear ft./piece
Thin Tech shim	4' lengths	.4 lbs. each	10/bundle	4 linear ft./piece
Starter angle	10' lengths	2.3 lbs. each	As needed	10 linear ft./piece
Thin Tech air vent	4' lengths	0.1 lbs. each	As needed	4 linear ft./piece
Brick adhesive**	28 oz. tube	3 lbs./tube	12 tubes/case	15 sq. ft./tube***
Brick adhesive**	10 oz. tube	2 lbs./tube	12 tubes/case	14.5 sq. ft./tube***
Stone adhesive	10 oz. tube	2 lbs./tube	24 tubes/case	20 lin. ft./tube
Stone primer	30 oz.	2 lbs.	As needed	200 sq. ft.
Drainage mat (1/4"/6mm)	39" x 61.5'	14 lbs.	As needed	200 sq. ft./roll
PCL mortar (unsanded)	1 cu. ft.	72 lbs.	As needed	72 sq. ft****
Polymer modified mortar	.375 cu. ft.	50 lbs.	As needed	27 sq. ft****
1-1/2" pan head square drive screw for steel	#10 x 1-1/2"	17 lbs.	1,700/box	1,079 sq. ft./box
2-1/2" pan head square drive screw for steel	#10 x 2-1/2"	17 lbs.	1,700/box	1,079 sq. ft./box
3-1/2" pan head square drive screw for steel	#10 x 3-1/2"	17 lbs.	850/box	540 sq. ft./box
4-1/2" pan head square drive screw for steel	#10 x 4-1/2"	17 lbs.	425/box	270 sq. ft./box
5-3/4" pan head square drive screw for steel	#10 x 5-3/4"	17 lbs.	425/box	270 sq. ft./box
1-1/2" pan head square drive screw for wood & concrete	3/16" x 1-1/2"	17 lbs.	1,700/box	1,700 sq. ft./box
2-1/4" pan head square drive screw for wood & concrete	3/16" x 2-1/4"	17 lbs.	1,700/box	1,079 sq. ft./box
3-1/4" pan head square drive screw for wood & concrete	3/16" x 3-1/4"	17 lbs.	850/box	850 sq. ft./box
4-1/4" pan head square drive screw for wood & concrete	3/16" x 4-1/4"	17 lbs.	425/box	270 sq. ft./box
5-1/2" pan head square drive screw for wood & concrete	3/16" x 5-1/2"	17 lbs.	425/box	270 sq. ft./box

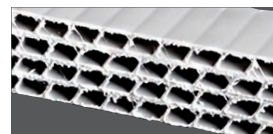
*Support tie spacing in following sizes: brick – 2-5/8", 3.2", 4"; stone – 8", 12", 16", 24". Available support tie sizes: 3/8" (standard), 5/8"
 Subject to availability *Corner brick will require 50% more adhesive ****Coverage will vary depending on masonry unit type and size.

Thin Tech accessories

Glen-Gery continues to lead the way in thin masonry support technology by stocking a full line of high-quality accessories. These accessories are recommended for the Elite and Classic Series panel systems and available through our authorized Thin Tech distribution network.



Starter angle



Air vent



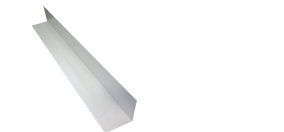
Thin Tech shim



Water-resistant barrier and drainage mat



Adhesive



Corner support

glengery.com

A BRAND OF
BRICKWORKS

