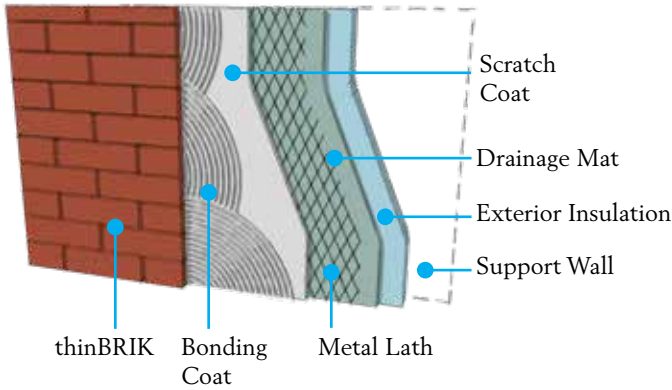


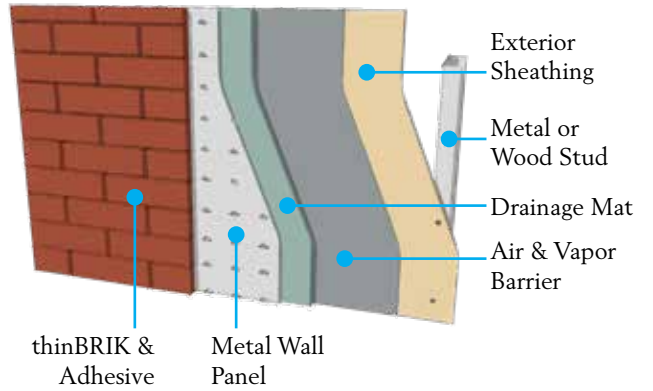


APPLICATIONS

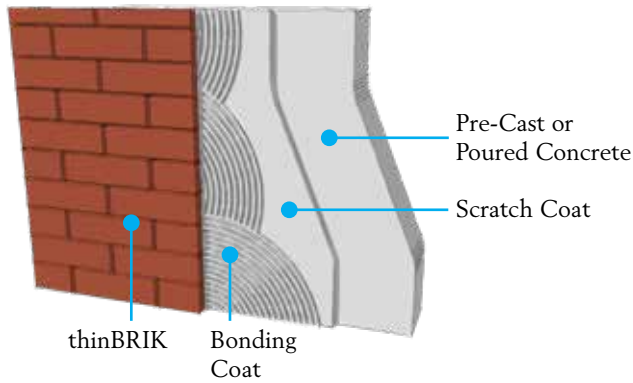
THICK SET MORTAR SYSTEM
Over Exterior Insulation



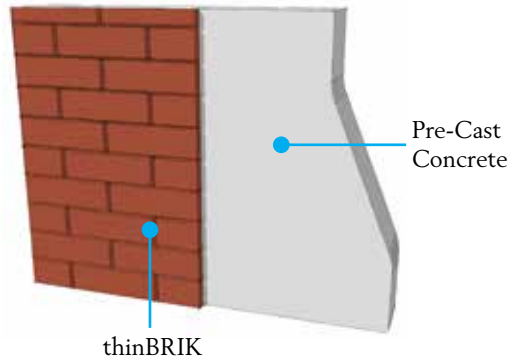
MODULAR PANEL SYSTEM
Over Stud Wall



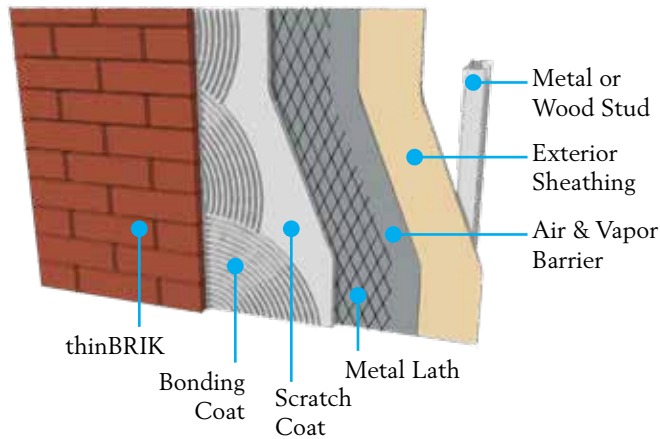
THIN SET MORTAR SYSTEM
Over Concrete Wall



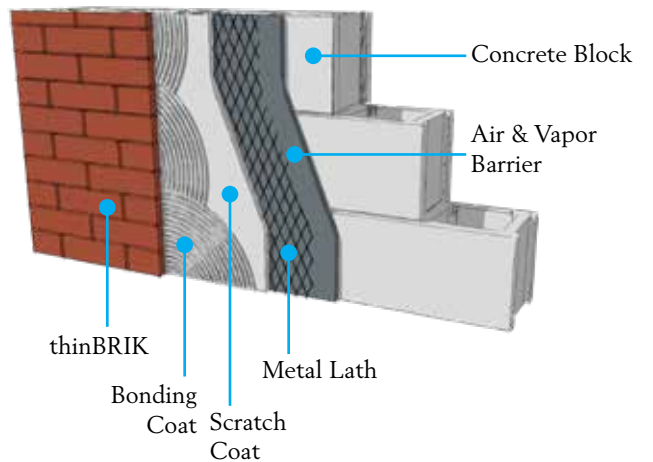
PRE-CAST WALL SYSTEM



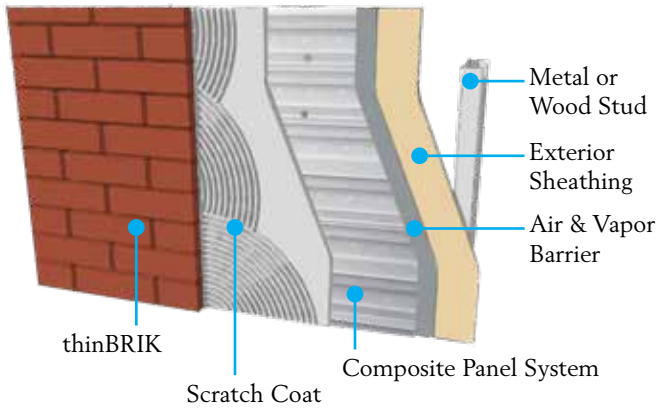
THICK SET MORTAR SYSTEM
Over Stud Wall



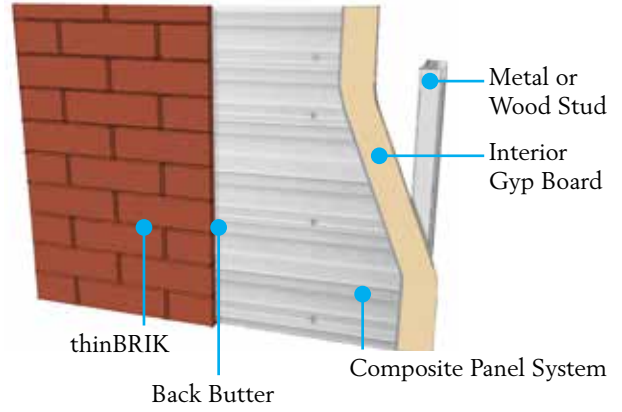
THICK SET MORTAR BED SYSTEM
Over CMU Wall



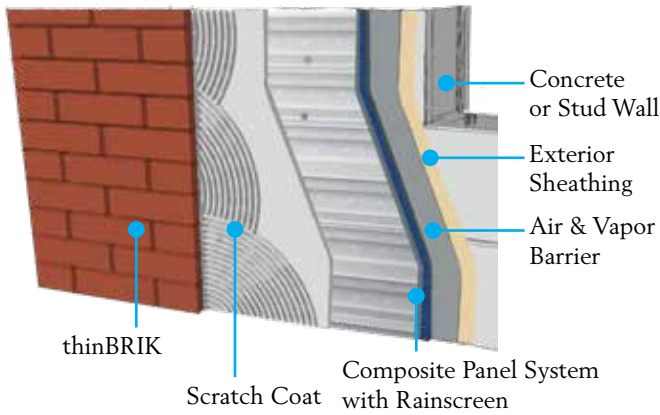
SPEEDYMASON™ SYSTEM EXTERIOR APPLICATION Over Stud Wall



SPEEDYMASON™ SYSTEM INTERIOR APPLICATION Over Stud Wall



SPEEDYMASON™ EXTERIOR RAINSCREEN APPLICATION Over Concrete Wall



INSTALLATION METHOD	RECOMMENDED MATERIALS	SPECIAL CONSIDERATIONS	thinBRiK - Sawn <i>for commercial & residential use, varies in thickness</i>		
			thinBRiK - Extruded <i>typically for commercial use, feasible applications</i>	thinBRiK - Kerfed Extruded <i>commercial use only, embedded in precast concrete</i>	
THICK SET	Mortar: Type N or Latex-Modified	Follow mortar manufacturer's instructions for thickness of bond coat and other brick setting requirements.	●	●	
THIN SET	Mortar: Latex-Modified	Follow mortar manufacturer's instructions for thickness of bond coat and other brick setting requirements.	●	●	
MODULAR PANELS	Mortar: Type N or Latex-Modified Panels & Adhesive: Per Panel Manufacturer Instructions	Check thin brick thickness tolerances for panel system. In the absence of guidelines, maximum tolerance of $\pm 1/16$ th inch is recommended.		●	
PRE-CAST PANELS	Verify Brick System Requirements Form Liner: Architectural Polymers, Innovative Brick Systems LLC, Advanced Formliners LLC	PCI compliance may be required. In some cases, PCI dimensional tolerances have been waived when products meet all other testing requirements.	●	●	●



thinBRiK Sawn



thinBRiK Extruded



thinBRiK Kerfed Extruded

These are recommendations only for typical applications. Always follow the requirements of your local codes and manufacturers recommendations. For more information visit www.gobrick.com/docs/default-source/read-research-documents/technicalnotes/28c-thin-brick-vener.pdf

3024 Acme Brick Plaza, Fort Worth TX 76109 • (800) 792-1234 • brick.com

