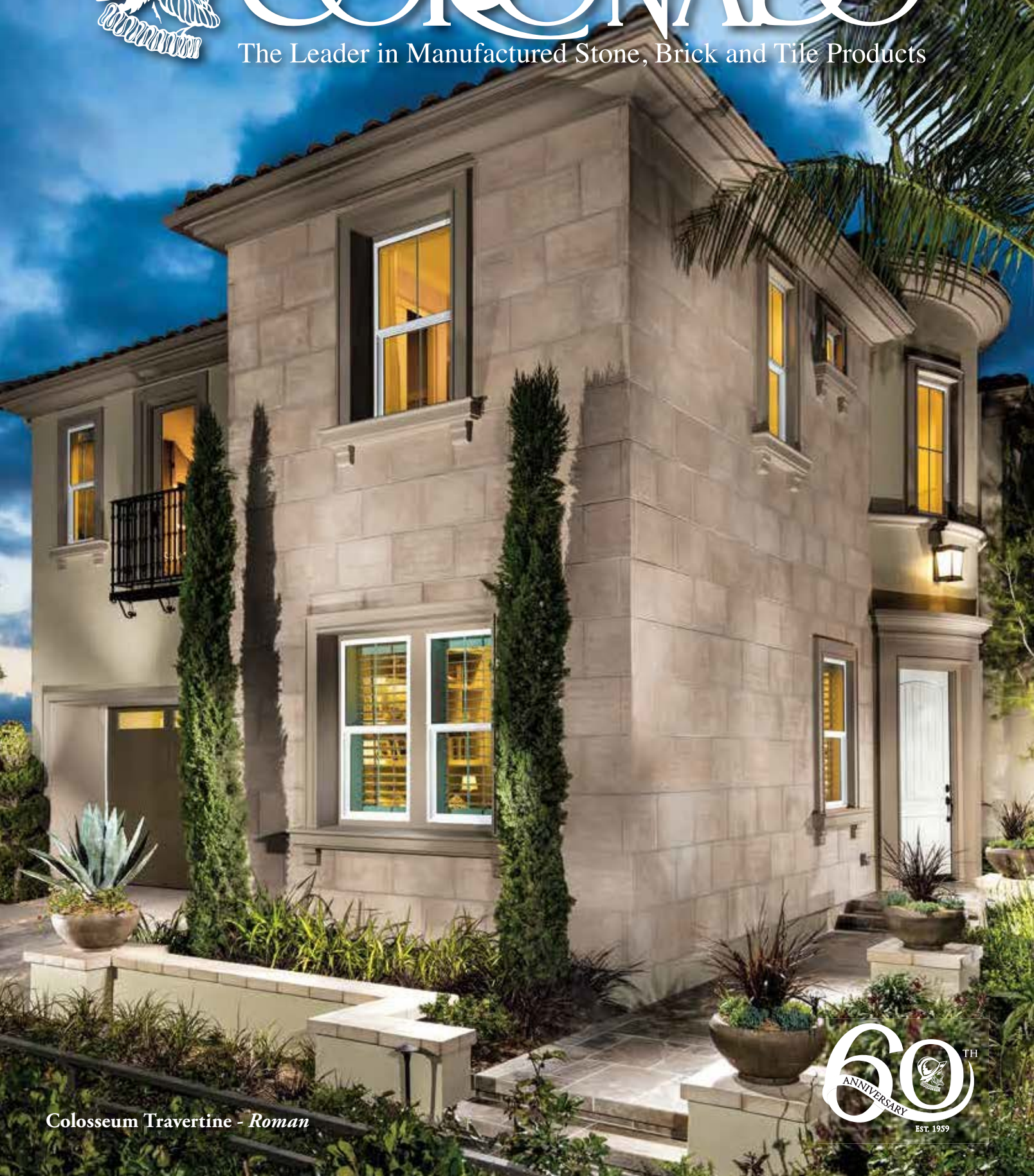




# CORONADO®

The Leader in Manufactured Stone, Brick and Tile Products



Colosseum Travertine - Roman





# TABLE OF CONTENTS



Sonora Sandstone  
Blue Heron



Smooth Limestone  
Cream



Barn WoodStone  
Rustic Farmhouse



Italian Villa®  
Volterra



Weathered Edge  
Coal Canyon

## NEW PRODUCTS

Urbana Smooth	1
Urbana Split	2
Sonora Sandstone	3
Element Ledgestone	4

## THE CLASSIC SERIES

8" Classic Jerusalem	7
Smooth Limestone	8
French Limestone	9
Chiseled Limestone	10
Hill Country Limestone	11
Colosseum Travertine	12
Aegean Coral, Caribbean Coral	13
The Getty Stone	14
Sand Canyon Flagstone	15
Decorative Bands	16

## WOODSTONE SERIES

Barn WoodStone	19
Rough Cut WoodStone	20
Refined WoodStone	21 - 22

## THE DESIGNER SERIES

Playa Vista Limestone	25
Amalfi Ledge	26
3" Split Limestone	27
6" Split Limestone	28
Prairie Stone	29
Industrial Ledge	30

## CUT STONE SERIES

Pavilion Stone	31 - 32
Canyon Cobble	33
Osage	34

## VILLA STONE SERIES

Venetian Villa®	37 - 38
Italian Villa®	39 - 40
Tuscan Villa®	41 - 42
French Country Villa®	43 - 44

## LEDGESTONE SERIES

Mountain Strip Stone	47
Coronado Strip Stone	48
Pro-Ledge®	49 - 50
Coronado Honey Ledge	51 - 52
Sawtooth Ledge	53
Artisan Ledge	54
Quick Stack®	55 - 56
Virginia Ledge	57
Sierra Ledge	58
Eastern Mountain Ledge®	59 - 60



Country Rubble  
Aspen



Minnesota Fieldstone  
Coastal Brown



Special Used Brick  
Rustic Blend



Brick Corner  
Rustic Blend



Flagstone Wall Cap  
Lompoc

# TABLE OF CONTENTS

## LEDGESTONE SERIES CONT.

Old World Ledge	61 - 62
Old Country Ledge	63 - 64
Rocky Mountain Ledge	65
Canyon Ledge	66
Idaho Drystack	67 - 68
Weathered Edge	69 - 70

## ASHLAR & RUBBLE SERIES

Country Rubble	73 - 74
Texas Rubble	75
Carolina Rubble	76
English Rubble	77 - 78
Santa Barbara	79 - 80
Country Castle	81
Belgian Castle	82

## IRREGULAR SHAPED STONE SERIES

Minnesota Fieldstone	85 - 86
Appalachian Fieldstone	87 - 88
Split Fieldstone	89
Viejo Ranch	90
River Rock	91
Creek Rock	92

## STONE COMBINATIONS

Stone Combinations	95 - 96
--------------------	---------

## THIN BRICK SERIES

Sand Mold Brick	99
Belgian Brick	100
Special Used Brick	101 - 102
Sculptured Brick	103
Clinker Brick	104
Wirecut Brick	105 - 106
Sicilian Brick	107
Roman Brick	108
Weathered Brick	109
New England Brick	110
Adobe Brick	111 - 112

## TRIM & ACCESSORIES

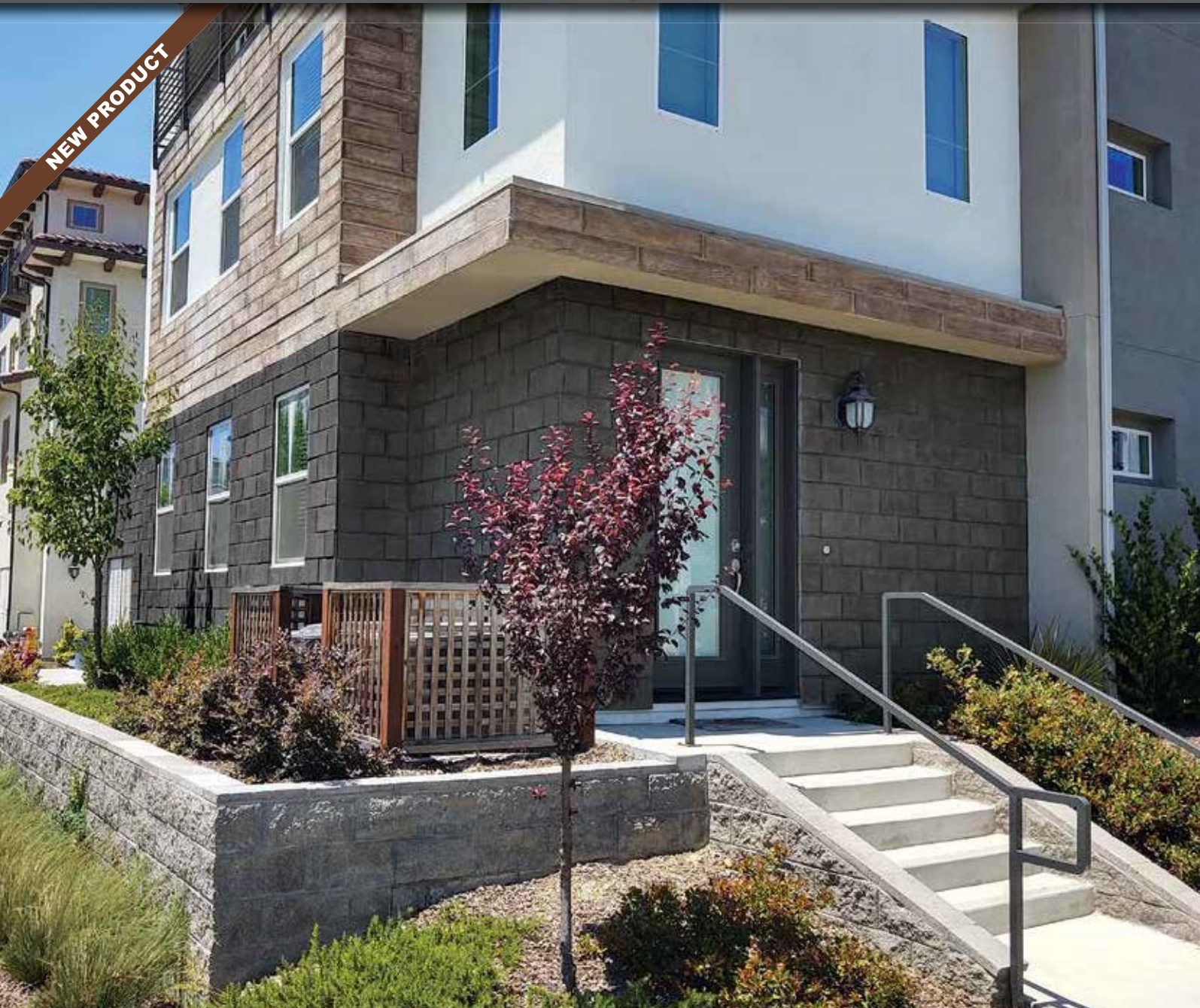
Sills, Lintels & Mantels	115
Window Stones, Trim Stones, Hearthstones & Boxes	116
Wall Caps & Post Caps	117
Brick Accessories	118
Grouting Options	119 - 120

## TECHNICAL DATA

Technical Data	123 - 124
Coronado Stone Sizes	125
Stone Color Index & Project Image Credits	126
Limited Warranty	127
Nationwide Manufacturing	128

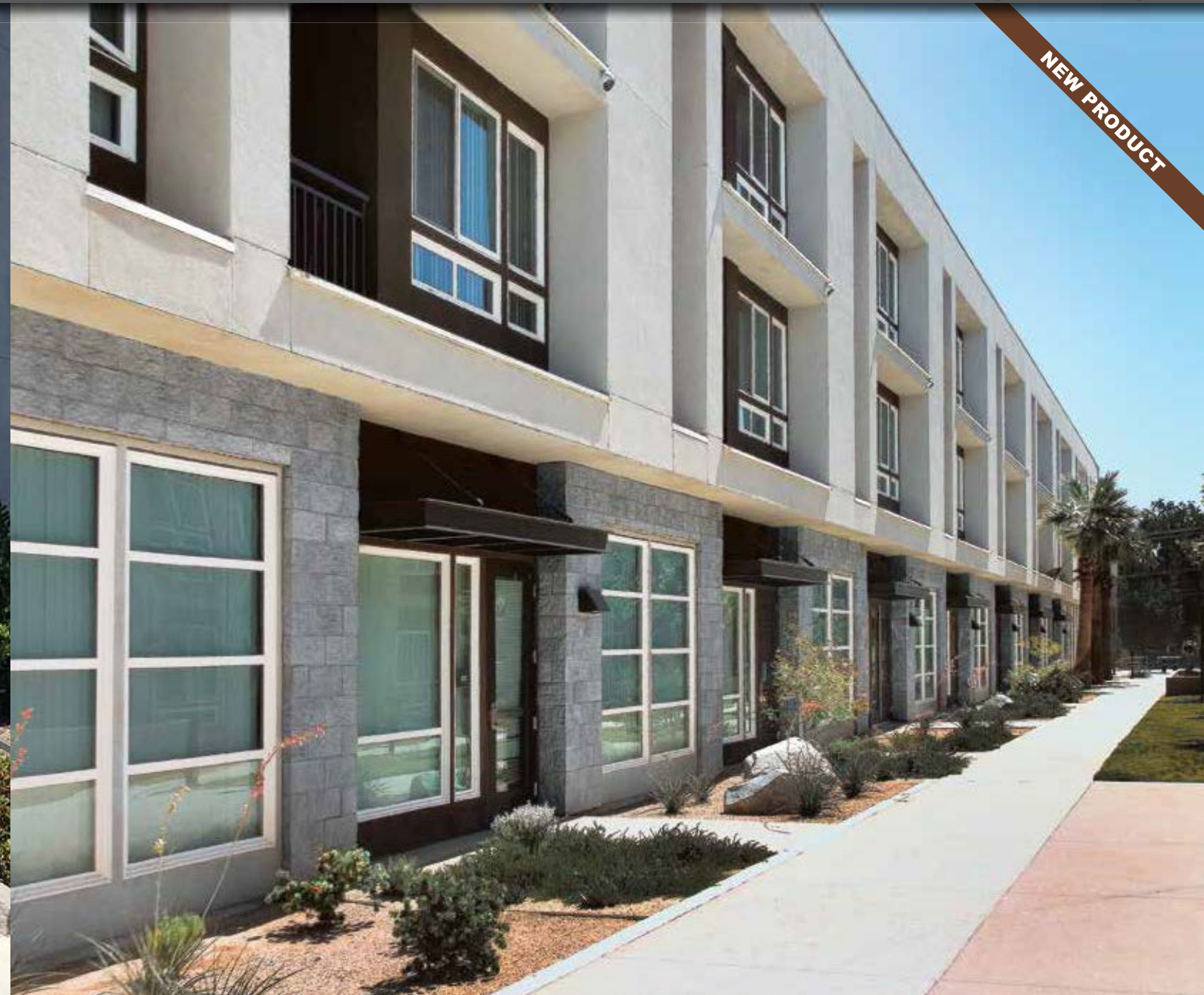


NEW PRODUCT



Urbana Smooth - Smoke (Also Shown Refined WoodStone - Red Oak)

NEW PRODUCT



Urbana Split - Grey Granite



Urbana Smooth  
French White



Urbana Smooth  
Country Beige



Urbana Smooth  
Silver Ash



Urbana Split  
Silver Ash



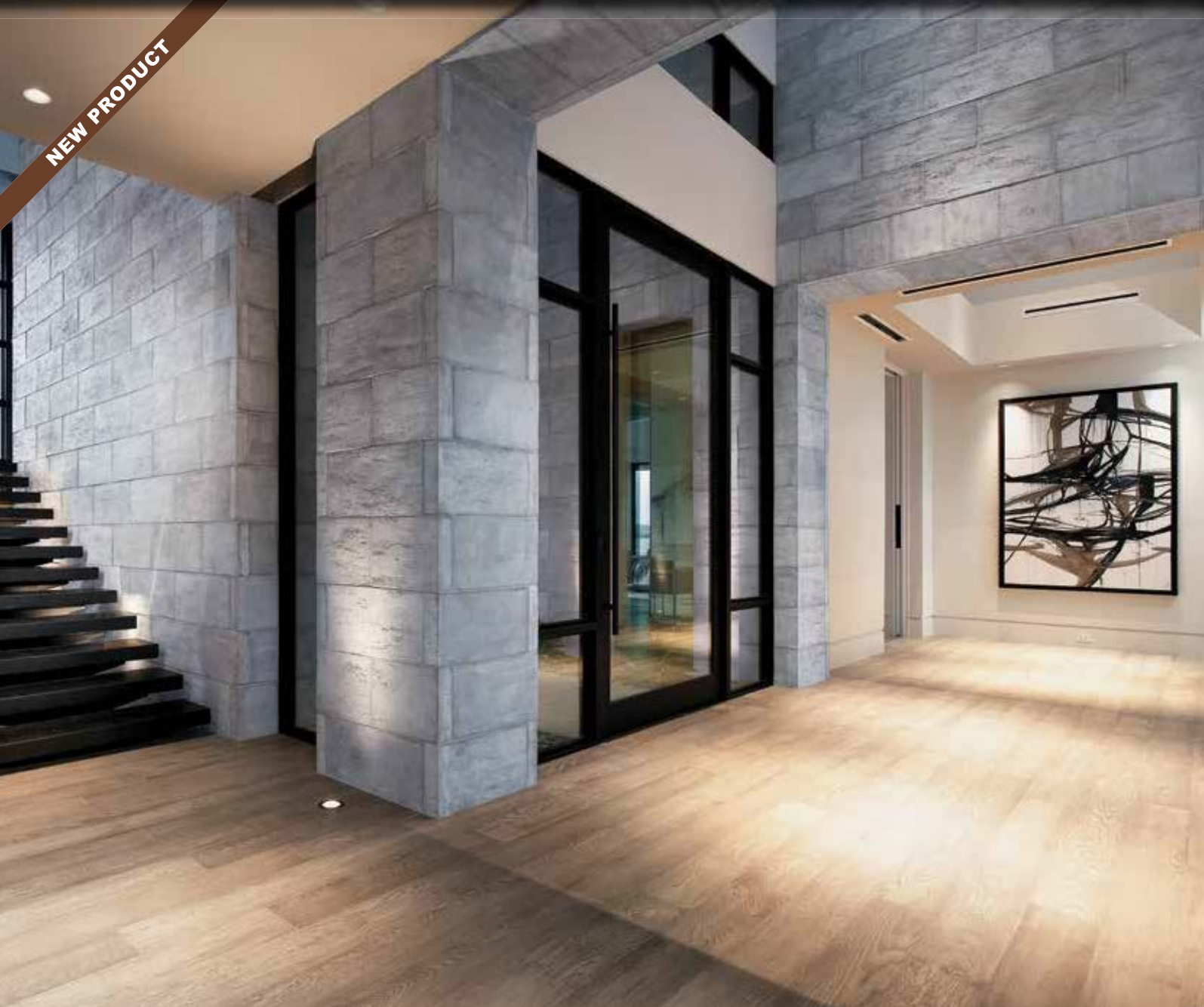
Urbana Split  
Country Beige



Urbana Split  
French White



NEW PRODUCT



Sonora Sandstone - *Blue Heron*

NEW PRODUCT



Element Ledgestone - *Silver Ash*



Sonora Sandstone  
*French White*



Sonora Sandstone  
*Silver Ash*



Sonora Sandstone  
*Palomar Blend*



Element Ledgestone  
*Mount Vernon*



Element Ledgestone  
*Northland*



Element Ledgestone  
*White*





## *THE CLASSIC SERIES*

These alluring oversized tiles were created to mimic the elegant stone adorning some of the most stunning architectural wonders of the world. The exquisite textures included in this series range from finely detailed limestone to deeply eroded travertine. Each profile flows well with both Classical and Modern design styles.

12" x 24" Chiseled Limestone - *Cream*  
16" x 24" Colosseum Travertine - *Harvard Grey*  
16" x 24" Colosseum Travertine - *Roman*





8" Classic Jerusalem - Sabara Beige



Smooth Limestone - Cream



8" Classic Jerusalem  
Silver Ash



8" Classic Jerusalem  
Sabara Beige



8" Classic Jerusalem  
Cayenne



Smooth Limestone  
Harvard Grey



Smooth Limestone  
Cream



Smooth Limestone  
White Sands





French Limestone - *Country Beige*



Chiseled Limestone - *Cream*



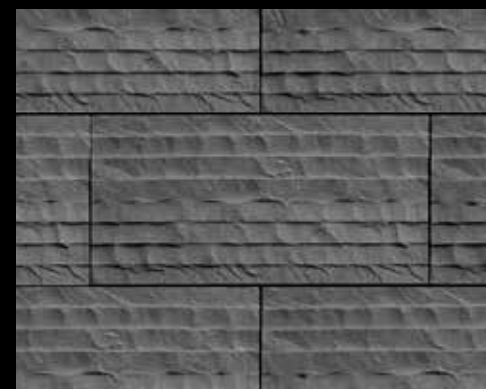
French Limestone  
*French White*



French Limestone  
*Country Beige*



French Limestone  
*Black Forest*



Chiseled Limestone  
*Black Forest*



Chiseled Limestone  
*Silver Ash*



Chiseled Limestone  
*Cream*





Hill Country Limestone - *Bandera*



Colosseum Travertine - *Roman*



Hill Country Limestone  
*Cream*



Hill Country Limestone  
*Bandera*



Hill Country Limestone  
*Silver Ash*



Colosseum Travertine  
*Roman*

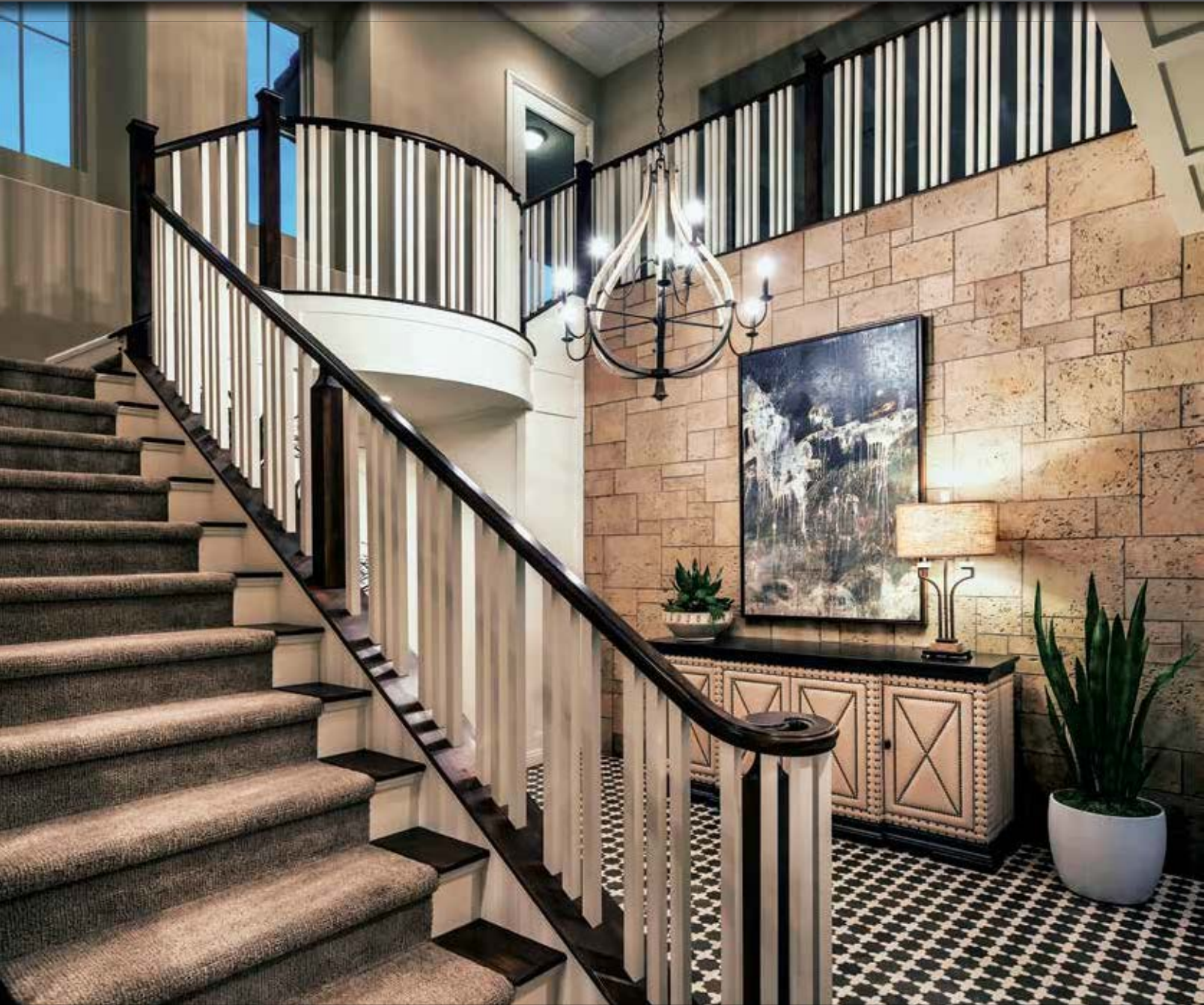


Colosseum Travertine  
*Timber Trail*



Colosseum Travertine  
*Black Forest*





Caribbean Coral - Santorini Blend (Ashlar Pattern)



The Getty Stone - Embassy Blend



Caribbean Coral  
Barbados (Ashlar Pattern)



Aegean Coral  
Santorini Blend (Coursed Pattern)



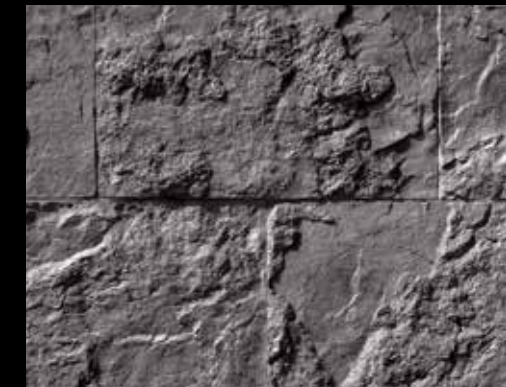
Aegean Coral  
White Sands (Coursed Pattern)



The Getty Stone  
Embassy Blend



The Getty Stone  
Silver Ash



The Getty Stone  
Black Forest





Sand Canyon Flagstone - *Amber Glow*



Chiseled Limestone - *Cream* with 4" Chiseled Limestone Band - *Silver Ash*



Sand Canyon Flagstone  
*Palomar Blend*



Sand Canyon Flagstone  
*Desert Beige*



Sand Canyon Flagstone  
*Cream*



Smooth Limestone - *Cream*  
6" Split Limestone - *Cream*



French Limestone - *Country Beige*  
6" Chiseled Limestone - *Cream*



French Limestone - *Cream*  
6" Smooth Limestone - *Cream*





## WOODSTONE SERIES

The WoodStone Series features three distinct textures that replicate the look and feel of natural wood. This durable thin concrete veneer is fire resistant and extremely cost effective when compared to its natural alternative.

Barn WoodStone - *Rustic Farmhouse*

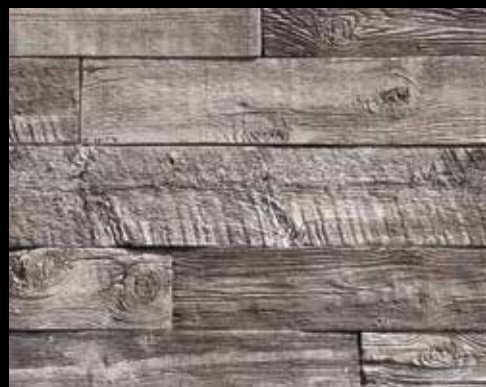




*Barn WoodStone - Spring Harvest*



*Rough Cut WoodStone - Deadwood*



**Barn WoodStone**  
*Rustic Farmhouse*



**Barn WoodStone**  
*Cannery Blend*



**Barn WoodStone**  
*Old Frontier*



**Rough Cut WoodStone**  
*Rustic Cedar*



**Rough Cut WoodStone**  
*Cedar*



**Rough Cut WoodStone**  
*Antique White*





Refined WoodStone - *Red Oak*



Refined WoodStone - *Blackened Oak*



Refined WoodStone - *Antique White*



Refined WoodStone  
*Blackened Oak*



Refined WoodStone  
*Deadwood*



Refined WoodStone  
*Red Oak*





## *THE DESIGNER SERIES*

This unique series contains a variety of stylish modern profiles. These sleek, highly-textured veneers were created for the designer looking to add a touch of minimalistic style to their project. The continuous linear patterns compliment both modern and contemporary architectural designs.

Playa Vista Limestone - *Cream*





Playa Vista Limestone - *Black Forest (Ashlar Pattern)*



Amalfi Ledge - *Salerno*



Playa Vista Limestone  
*Walnut (Coursed Pattern)*



Playa Vista Limestone  
*Alaskan Sunset (Coursed Pattern)*



Playa Vista Limestone  
*Cream (Coursed Pattern)*



Amalfi Ledge  
*Ravello*



Amalfi Ledge  
*Pompeii*



Amalfi Ledge  
*Marianna*





3" Split Limestone - *Genoa Sands*



6" Split Limestone - *Genoa Sands*



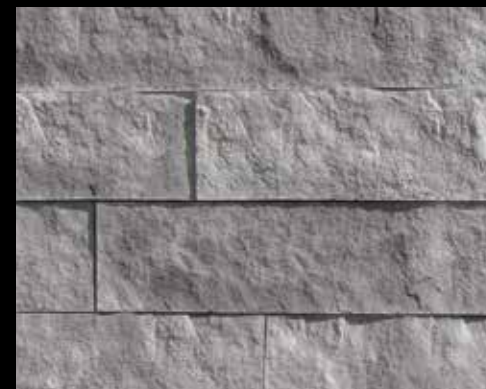
3" Split Limestone  
*White*



3" Split Limestone  
*Walnut*



3" Split Limestone  
*Grey*



6" Split Limestone  
*Summit Grey*



6" Split Limestone  
*Cream*



6" Split Limestone  
*White*





Prairie Stone - Grey Granite



Industrial Ledge - Shale Grey



Prairie Stone  
Latte



Prairie Stone  
Mocha Granite



Prairie Stone  
Smoke



Industrial Ledge  
Blackened Oak



Industrial Ledge  
Shale Grey



Industrial Ledge  
Oakbrook





## *CUT STONE SERIES*

The Cut Series features a variety of profiles that replicate the look of natural thin-cut veneer selected from quarries across North America. The gorgeous natural textures and rich color hues highlight the inherent beauty that make these stone veneer styles so desirable within the design community.

*Pavilion Stone - Pine Creek*





Canyon Cobble - Indian Springs



Osage - Fossil Bay



Canyon Cobble  
Wind River



Canyon Cobble  
Saratoga Springs



Canyon Cobble  
Desert Sunset



Osage  
Dakota Brown



Osage  
Cape Cod Grey



Osage  
Ancient Reef





## *VILLA STONE SERIES*

We searched up and down the Mediterranean coast to find the perfect blend of stone shapes and textures that embodied European old world architecture. Our Villa Stone profiles exemplify the unique characteristics of some of the most sought after types of stone adorning villas and chateaus across Europe.

French Country Villa® - Bordeaux





Venetian Villa® - Texas Cream (Dry Stacked)



Venetian Villa® - Madison County (Grouted)



Venetian Villa®  
Versailles (Grouted)



Venetian Villa®  
Sunset Blend (Grouted)



Venetian Villa®  
Dakota Brown (Grouted)



Venetian Villa®  
Madison County (Grouted)



Venetian Villa®  
Grey (Grouted)



Venetian Villa®  
Palazzo (Dry Stacked)

Square foot coverage is based on installation with a 1/2" mortar joint.  
Other colors are available for this profile.





Italian Villa® - *Provo Canyon Grey*



Italian Villa® - *Volterra*



Italian Villa®  
*Provo Canyon Grey*



Italian Villa®  
*Verona*



Italian Villa®  
*Aspen*



Italian Villa® - *Volterra*



Italian Villa®  
*Dakota Brown*



Italian Villa®  
*Volterra*

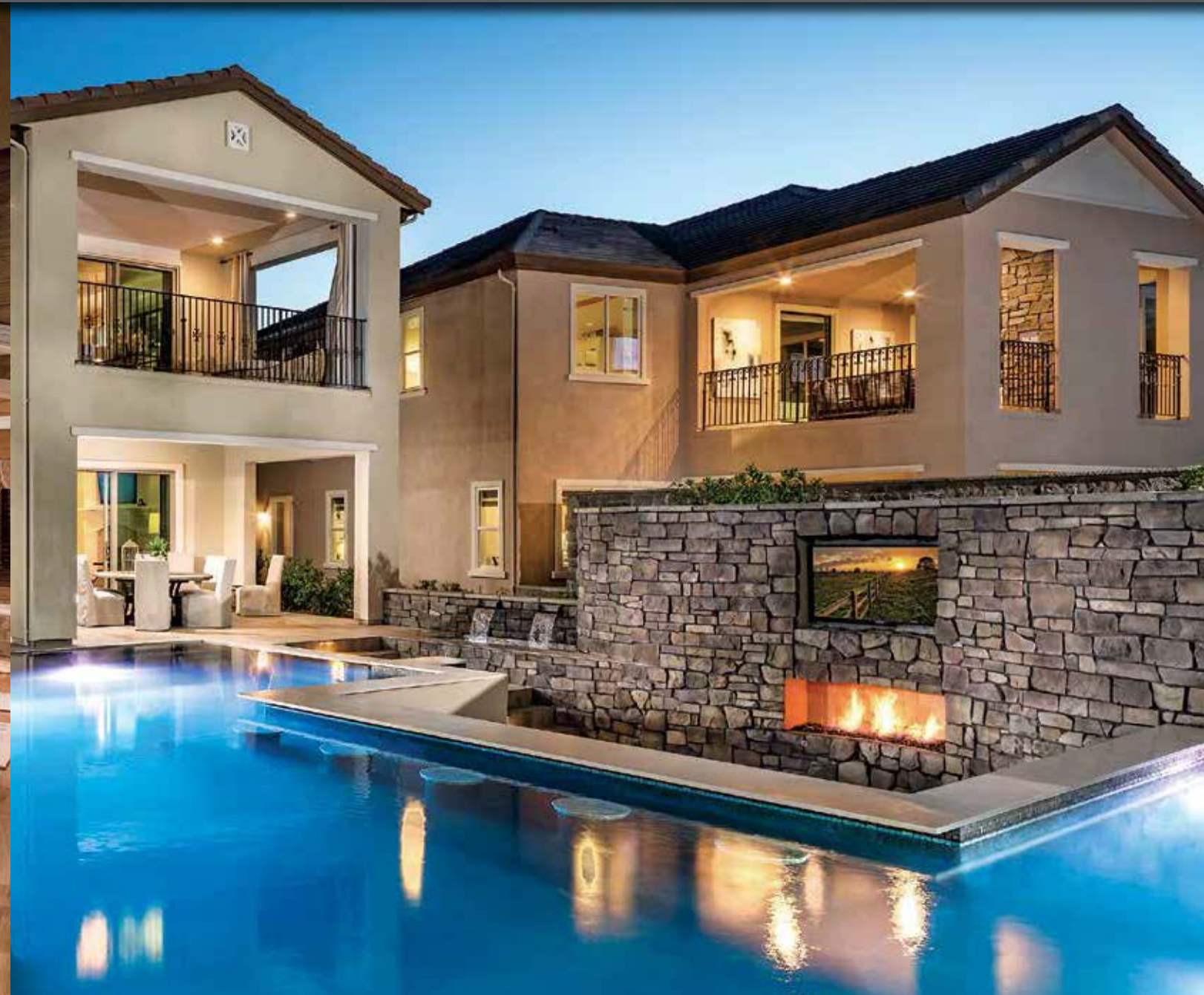


Italian Villa®  
*Portabella*





Tuscan Villa® - Florentine



Tuscan Villa® - Prairie Moss



Tuscan Villa®  
Monarch



Tuscan Villa®  
Seville



Tuscan Villa®  
Florentine



Tuscan Villa®  
Coal



Tuscan Villa®  
Prairie Moss



Tuscan Villa®  
Romano





French Country Villa® - Volterra



French Country Villa® - Versailles



French Country Villa®  
Bordeaux



French Country Villa®  
Champagne



French Country Villa®  
Verona



French Country Villa®  
Carmel Mountain



French Country Villa®  
Chablis



French Country Villa®  
Grey Quartzite





## *LEDGESTONE SERIES*

We feature a vast selection of ledgestone profiles which replicate some of the most beautiful quarried ledgestones from around the country. Choose from a wide array of shapes, sizes and colors to compliment any architectural project, ranging from rustic to contemporary in style.

*Idaho Drystack - Smokey Grey*





Mountain Strip Stone - Renaissance Blend



Coronado Strip Stone - Fawn



Mountain Strip Stone Brookside



Mountain Strip Stone Chablis



Mountain Strip Stone Cape Cod Grey



Coronado Strip Stone Black Forest



Coronado Strip Stone Dakota Brown



Coronado Strip Stone Fawn





Pro-Ledge® - Black Forest



Pro-Ledge® - Brookside



Pro-Ledge®  
Oakbrook



Pro-Ledge®  
Huron



Pro-Ledge®  
Brookside



Pro-Ledge® - White



Pro-Ledge®  
Black Forest



Pro-Ledge®  
Grey Quartzite



Pro-Ledge®  
Chablis





Coronado Honey Ledge - Carmel Mountain



Coronado Honey Ledge - Shasta



Coronado Honey Ledge  
Shasta



Coronado Honey Ledge  
Grey Quartzite



Coronado Honey Ledge  
Huron



Coronado Honey Ledge  
Golden Harvest



Coronado Honey Ledge  
Chablis



Coronado Honey Ledge  
Sioux Falls



Coronado Honey Ledge  
Four Rivers



Coronado Honey Ledge  
Carmel Mountain



Coronado Honey Ledge  
Rocky Mountain Rundle





Sawtooth Ledge - *Silver Ash*



Artisan Ledge - *Cypress Point*



Sawtooth Ledge  
*Northland*



Sawtooth Ledge  
*Mount Vernon*



Sawtooth Ledge  
*Smoke*



Artisan Ledge  
*Huron*



Artisan Ledge  
*Falmouth*



Artisan Ledge  
*Smoke*





Quick Stack® - Cape Cod Grey



Quick Stack® - Carmel Mountain



2" Quick Stack® Piece

4" Quick Stack® Piece

4" Quick Stack® Panel



Quick Stack® Cape Cod Grey



Quick Stack® Carmel Mountain



Quick Stack® - English Grey



Quick Stack® Cathedral Grey



Quick Stack® Coastal Brown



Quick Stack® Aspen





Virginia Ledge - *Cape Cod Grey*



Sierra Ledge - *Bourbon Creek*



Virginia Ledge  
*Golden Sand*



Virginia Ledge  
*Coastal Brown*



Virginia Ledge  
*Aspen*



Sierra Ledge  
*Brookside*



Sierra Ledge  
*Falmouth*



Sierra Ledge  
*Cathedral Grey*





Eastern Mountain Ledge® - *Dakota Brown*



Eastern Mountain Ledge® - *Carmel Mountain*



Eastern Mountain Ledge®  
*Brookside*



Eastern Mountain Ledge®  
*Wheat*



Eastern Mountain Ledge®  
*Grey Quartzite*



Eastern Mountain Ledge®  
*Saginaw*



Eastern Mountain Ledge®  
*Provo Canyon Grey*



Eastern Mountain Ledge®  
*Carmel Mountain*



Eastern Mountain Ledge®  
*Chablis*



Eastern Mountain Ledge®  
*Madison County*



Eastern Mountain Ledge®  
*Dakota Brown*



Eastern Mountain Ledge®  
*Coastal Brown*



Eastern Mountain Ledge®  
*Aspen*



Eastern Mountain Ledge®  
*Huron*





Old World Ledge - *Sunset Blend (Grouted)*



Old World Ledge - *Charleston (Dry Stacked)*



Old World Ledge  
*Antique Cream (Dry Stacked)*



Old World Ledge  
*Burnt Oak (Dry Stacked)*



Old World Ledge  
*Grey Quartzite (Grouted)*



Old World Ledge  
*Etowah (Dry Stacked)*



Old World Ledge  
*Chablis (Dry Stacked)*



Old World Ledge  
*Birch Grove (Dry Stacked)*



Old World Ledge  
*Monarch (Dry Stacked)*



Old World Ledge  
*Huron (Dry Stacked)*



Old World Ledge  
*Brookside (Grouted)*





Old Country Ledge - Huron (Grouted)



Old Country Ledge - Carmel Mountain (Dry Stacked)



Old Country Ledge  
Madison County (Grouted)



Old Country Ledge  
Chablis (Dry Stacked)



Old Country Ledge  
Aspen (Grouted)



Old Country Ledge  
Shasta (Dry Stacked)



Old Country Ledge  
Grey Quartzite (Grouted)



Old Country Ledge  
Banff (Dry Stacked)



Old Country Ledge  
Dakota Brown (Dry Stacked)



Old Country Ledge  
Coastal Brown (Grouted)



Old Country Ledge  
Carmel Mountain (Grouted)





**Rocky Mountain Ledge  
Copper Canyon (Dry Stacked)**



**Rocky Mountain Ledge  
Meadow Springs (Dry Stacked)**



**Rocky Mountain Ledge  
Sandy Peaks (Dry Stacked)**



**Rocky Mountain Ledge - Copper Canyon (Dry Stacked)**



**Canyon Ledge - Dakota Brown (Grouted)**



**Rocky Mountain Ledge  
Bitterroot (Grouted)**



**Rocky Mountain Ledge  
Greycliffe (Dry Stacked)**



**Rocky Mountain Ledge  
Black Rundle (Dry Stacked)**



**Canyon Ledge  
Cape Cod Grey (Dry Stacked)**



**Canyon Ledge  
Sunset Blend (Dry Stacked)**



**Canyon Ledge  
Brookside (Dry Stacked)**





Idaho Drystack - *Antique Buff*



Idaho Drystack - *Carmel Mountain*



Idaho Drystack  
*Antique Buff*



Idaho Drystack  
*Grey Quartzite*



Idaho Drystack  
*Cape Cod Grey*



Idaho Drystack  
*Aspen*



Idaho Drystack  
*Chablis*



Idaho Drystack  
*Carmel Mountain*





Weathered Edge - Coal Canyon



Weathered Edge - Sunhill Blend



Weathered Edge  
Foxhill Blend



Weathered Edge  
Sunhill Blend



Weathered Edge  
Wisconsin Blend



Weathered Edge - Chablis



Weathered Edge  
Coal Canyon



Weathered Edge  
Aspen



Weathered Edge  
Chablis





## ASHLAR & RUBBLE SERIES

The skillfully handcrafted stones from this series can be traced back to times when artisan masons meticulously chiseled blocks of limestone to construct majestic structures. These magnificent stone profiles possess wonderfully sculpted textures and can be installed in an ashlar or coursed pattern.

Country Rubble - Lompoc





Country Rubble - Grey Quartzite (Dry Stacked)



Country Rubble - Aspen (Grouted)



Country Rubble  
Antique Cream (Dry Stacked)



Country Rubble  
Texas Cream (Grouted)



Country Rubble  
Sunset Blend (Dry Stacked)



Country Rubble  
Coastal Brown (Dry Stacked)



Country Rubble  
Golden Brown (Dry Stacked)



Country Rubble  
Grey Quartzite (Grouted)





Texas Rubble - *Texas Cream*



Carolina Rubble - *Sandstone*



Texas Rubble  
*Antique Cream*



Texas Rubble  
*Texas Cream*



Texas Rubble  
*Carmel Mountain*



Carolina Rubble  
*Dakota Brown*



Carolina Rubble  
*Grey Quartzite*



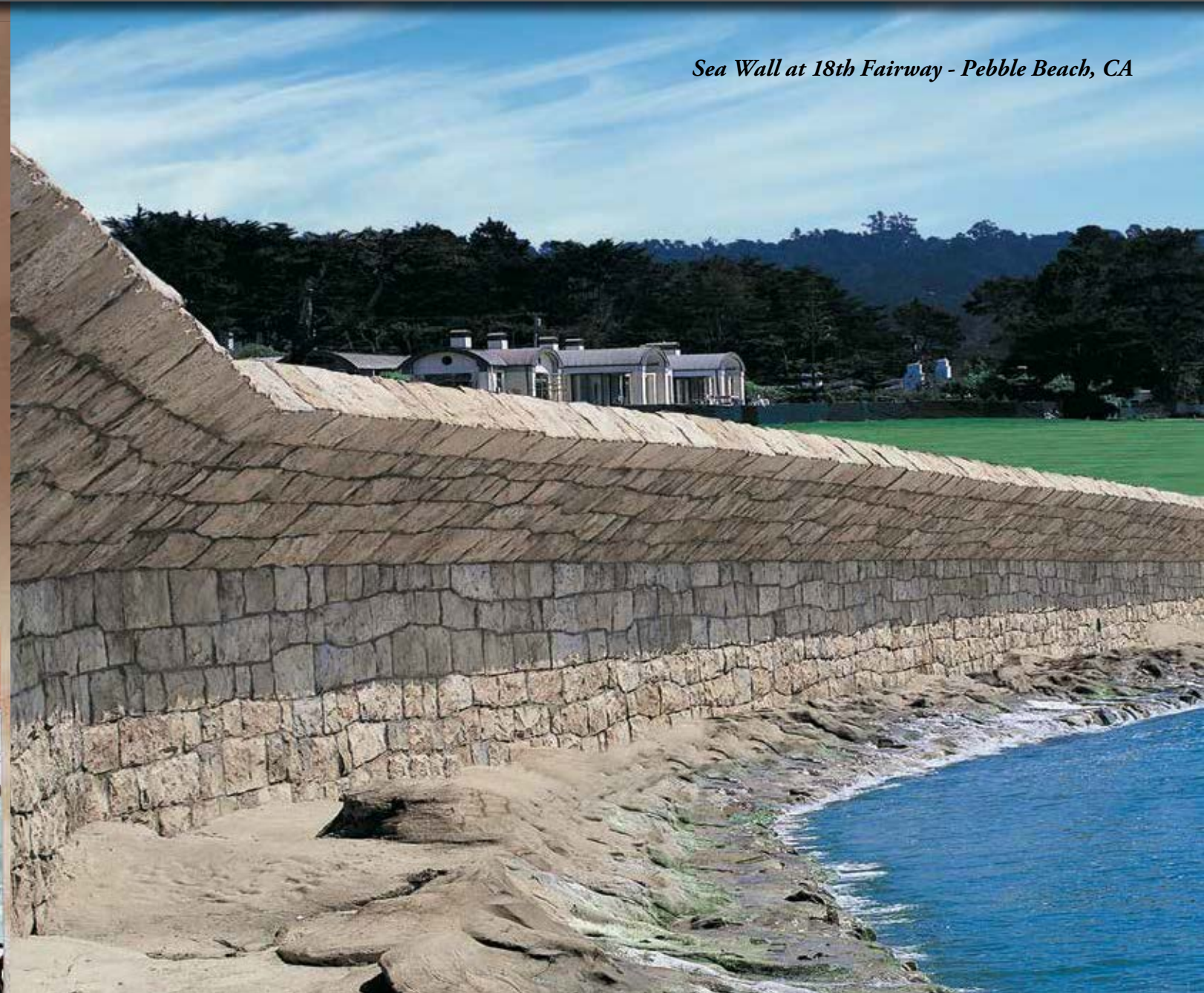
Carolina Rubble  
*Aspen*

Square foot coverage is based on installation with a 1/2" mortar joint.  
Other colors are available for this profile.





English Rubble - *Dakota Brown*



*Sea Wall at 18th Fairway - Pebble Beach, CA*

English Rubble - *Pebble Beach Blend*



English Rubble  
*Black Hills*



English Rubble  
*Dakota Brown*



English Rubble  
*Newport Sandstone*

Square foot coverage is based on installation with a 1/2" mortar joint.  
Other colors are available for this profile.





Santa Barbara - Sand Dune (Coursed Pattern)



Santa Barbara - Brookshire (Ashlar Pattern)



Santa Barbara  
English Grey (Ashlar Pattern)



Santa Barbara  
Sand Dune (Ashlar Pattern)



Santa Barbara  
Brookshire (Ashlar Pattern)





Country Castle - Lompoc (Grouted)



Belgian Castle - Dakota Brown (Grouted)



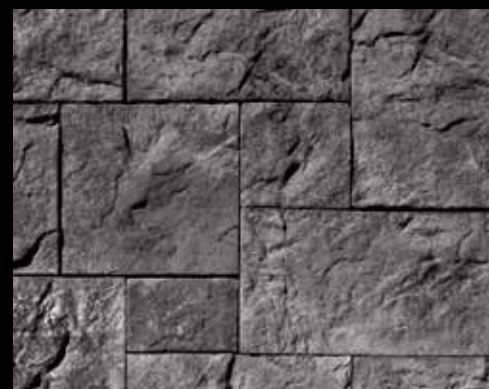
Country Castle  
Dakota Brown (Grouted)



Country Castle  
Chablis (Grouted)



Country Castle  
Madison County (Grouted)



Belgian Castle  
Black Forest (Dry Stacked)



Belgian Castle  
Chablis (Grouted)



Belgian Castle  
Brookside (Dry Stacked)





## *IRREGULAR SHAPED STONE SERIES*

The irregular shaped stones shown in this series replicate a diverse group of fieldstones and river rocks that are native to the Eastern United States. These stones feature textures forged by millions of years of erosion, and a color palette of rich earthy hues that blend seamlessly with outdoor environments.

*Appalachian Fieldstone - Bourbon*





Minnesota Fieldstone - *Dakota Brown*



Minnesota Fieldstone - *Coastal Brown*



Minnesota Fieldstone  
*Grey Quartzite*



Minnesota Fieldstone  
*Carmel Mountain*



Minnesota Fieldstone  
*Dakota Brown*



Minnesota Fieldstone  
*Chablis*



Minnesota Fieldstone  
*Aspen*



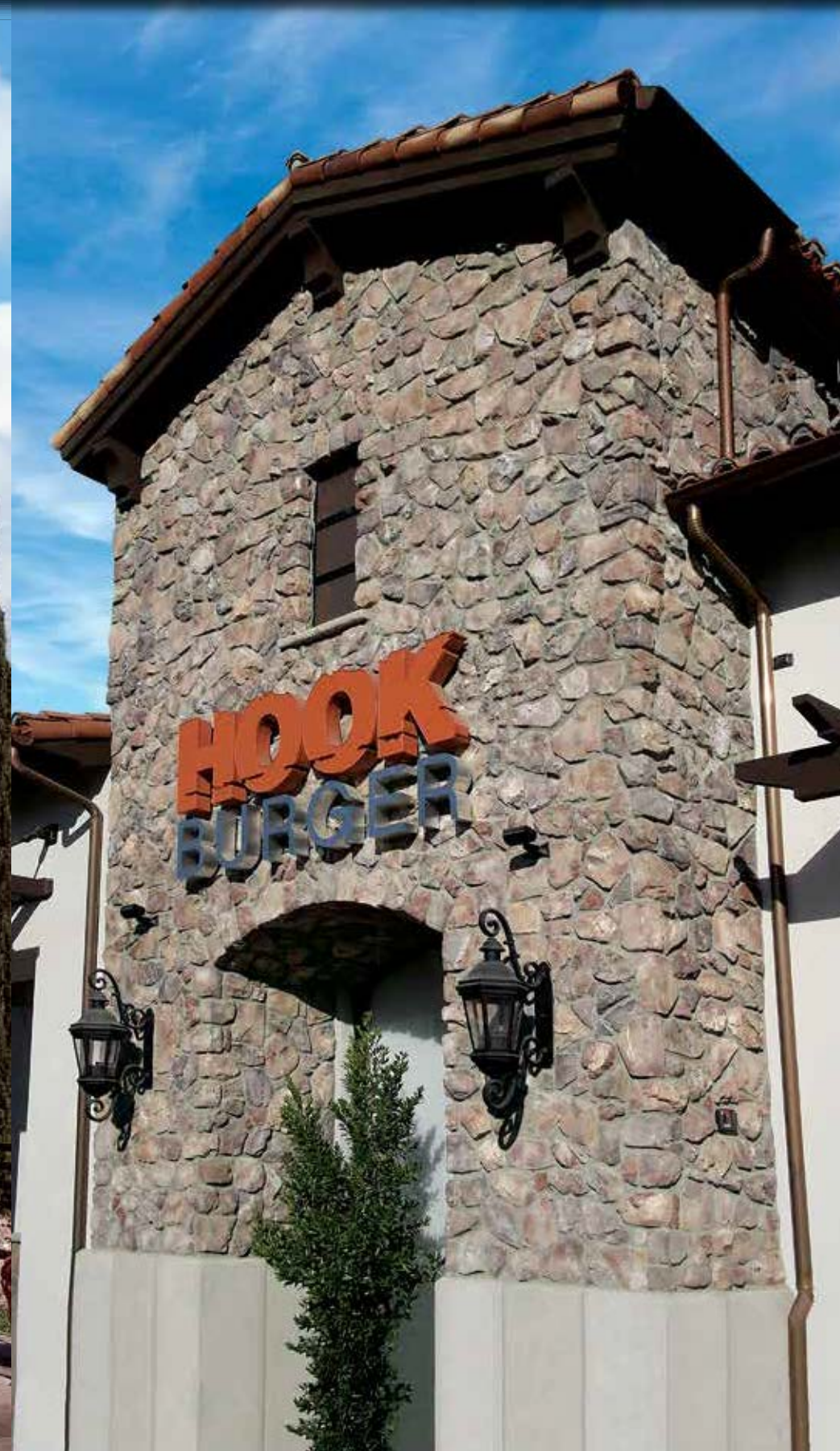
Minnesota Fieldstone  
*Huron*

Square foot coverage is based on installation with a 1/2" mortar joint.  
Other colors are available for this profile.





Appalachian Fieldstone - Mountain Sunset



Appalachian Fieldstone - Grey Quartzite



Appalachian Fieldstone  
Naples



Appalachian Fieldstone  
Mountain Sunset



Appalachian Fieldstone  
Madison County



Appalachian Fieldstone  
Dakota Brown





Split Fieldstone - *Carmel Mountain*



Viejo Ranch - *Viejo Blend*



Split Fieldstone  
*Lompoc*



Split Fieldstone  
*Silver Grey*



Split Fieldstone  
*Dakota Brown*





*River Rock - Seaside*



*Creek Rock - Southwest Blend*



*River Rock  
Reno Blend*



*River Rock  
Sienna Brown*



*River Rock  
Desert Rust*



*Creek Rock  
Apache Brown*



*Creek Rock  
Calico Sand*



*Creek Rock  
Palm Springs Blend*





## STONE COMBINATIONS

Multiple stone veneer styles and colors can be combined to create a custom appearance. Varying the percentage of each profile allows designers to create drastically different looks, which enables further refinement of the style they are trying to achieve.

70% Eastern Mountain Ledge® - *Coastal Brown*  
30% Minnesota Fieldstone - *Coastal Brown*





50% Italian Villa - Verona  
50% Tuscan Villa - Florentine



70% Eastern Mountain Ledge - Carmel Mountain  
30% Minnesota Fieldstone - Carmel Mountain



50% Minnesota Field. - Grey Quartzite  
50% Tumbled Ledge - Grey Quartzite



80% Minnesota Field. - Wheat & Chestnut  
20% Eastern Mtn. Ledge - Wheat & Chestnut



80% Eastern Mtn. Ledge - Dakota Brown  
20% Appalachian Field. - Dakota Brown



50% Eastern Mtn. Ledge - Madison County  
50% Appalachian Field. - Madison County



70% Eastern Mtn. Ledge - Carmel Mtn.  
30% Minnesota Field. - Wisconsin Blend



70% Split Fieldstone - Lompoc  
30% Eastern Mtn. Ledge - Lompoc

Square foot coverage varies depending on selected profile.  
Other colors are available for each of these profiles.





## *THIN BRICK SERIES*

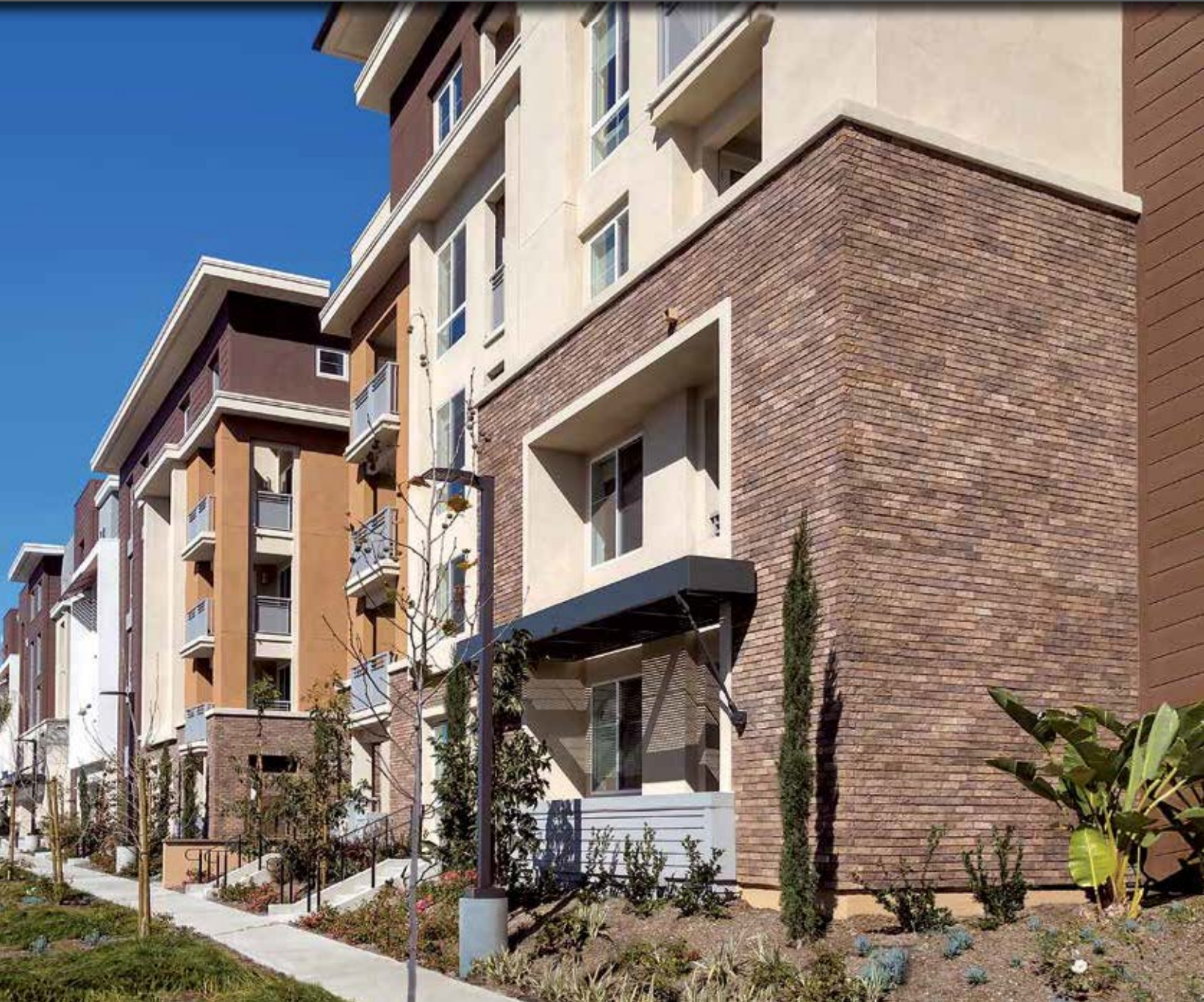
We offer a range of thin brick products that come in a wide variety of sizes, textures and colors. Projects can be enhanced with the alluring look and feel of full bed-depth brick without the need for additional wall tie support that standard brick installations require.

*Adobe Brick - Sienna with Mortar Wash*





2 3/4" x 8 3/4" Sand Mold Brick - *Savannah Grey*



2 1/2" x 8" Belgian Brick - *Brookside*



2 3/4" x 8 3/4" Sand Mold Brick  
*Old Colonial*



2 3/4" x 8 3/4" Sand Mold Brick  
*Cottonwood*



2 3/4" x 8 3/4" Sand Mold Brick  
*Barnacle*



2 1/2" x 8" Belgian Brick  
*Bear Creek*



2 1/2" x 8" Belgian Brick  
*Light Grey*



2 1/2" x 8" Belgian Brick  
*Brookside*





2 1/2" x 8" Special Used Brick - *Eagle Buff*



2 1/2" x 8" Special Used Brick - *Rustic Blend*



2 1/2" x 8" Special Used Brick  
*Bear Creek*



2 1/2" x 8" Special Used Brick  
*Wolf Grey*



2 1/2" x 8" Special Used Brick  
*Eagle Buff*



2 1/2" x 8" Special Used Brick  
*Country*



2 1/2" x 8" Special Used Brick  
*Rustic Blend*



2 1/2" x 8" Special Used Brick  
*Glacier*

Square foot coverage is based on installation with a 1/2" mortar joint.  
Other colors are available for this profile.





2 1/2" x 8" Sculptured Brick - *Eagle Buff*



2 1/2" x 8" Clinker Brick - *Brown Blend*



2 1/2" x 8" Sculptured Brick  
*Rustic Blend*



2 1/2" x 8" Sculptured Brick  
*Aspen*



2 1/2" x 8" Sculptured Brick  
*Wheat*



2 1/2" x 8" Clinker Brick  
*Eagle Buff*



2 1/2" x 8" Clinker Brick  
*Brown Blend*



2 1/2" x 8" Clinker Brick  
*Antique Red*





2 1/2" x 8" Wirecut Brick - *Wolf Grey*



4" x 12" Oversized Wirecut Brick - *Old Chicago*



2 1/2" x 8" Wirecut Brick - *Spectrum*



2 1/2" x 8" Wirecut Brick  
*La Jolla Blend*



2 1/2" x 8" Wirecut Brick  
*Iceberg*



2 1/2" x 8" Wirecut Brick  
*Wolf Grey*





2 1/2" x 8" Sicilian Brick - Ferrara Blend



2 1/4" x 10" Roman Brick - Mezzano



2 1/2" x 8" Sicilian Brick  
Ferrara Blend



2 1/2" x 8" Sicilian Brick  
Marsala Blend



2 1/2" x 8" Sicilian Brick  
Monreale



2 1/4" x 10" Roman Brick  
Mezzano



2 1/4" x 10" Roman Brick  
Sorano



2 1/4" x 10" Roman Brick  
Ambrosia





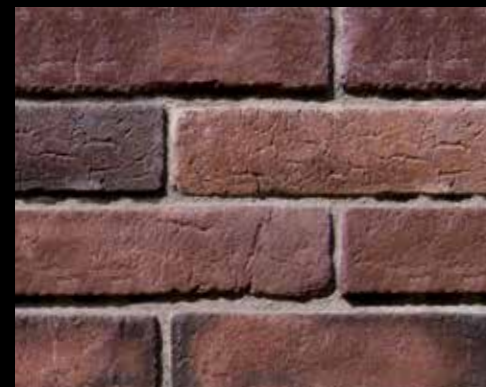
3" x 10" Weathered Brick - *Carmel Mountain*



3" x 10" New England Brick - *Charleston*



3" x 10" Weathered Brick  
*Carmel Mountain*



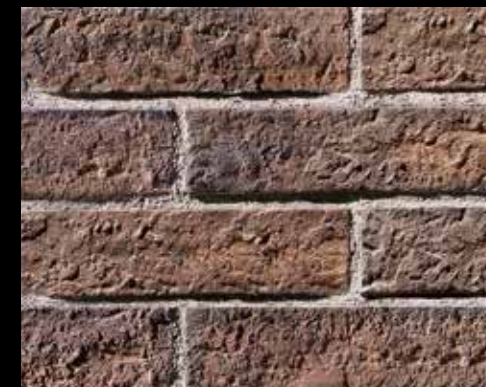
3" x 10" Weathered Brick  
*Antique Red*



3" x 10" Weathered Brick  
*Savannah*



3" x 10" New England Brick  
*Charleston*



3" x 10" New England Brick  
*Dakota Brown*



3" x 10" New England Brick  
*Bear Creek*





4" x 16" Adobe Brick - Haystack



4" x 16" Adobe Brick - Sienna with Mortar Wash



4" x 16" Adobe Brick  
Haystack



4" x 16" Adobe Brick  
Saltillo



4" x 16" Adobe Brick  
Sienna





## *TRIM & ACCESSORIES*

Coronado Stone offers one of the largest architectural stone accessory product lines in the industry. These meticulously handcrafted accents will add the extra finishing touches to your amazing project.

*Flagstone Wall Cap - Lompoc  
Italian Villa® - Dakota Brown*



MOLDINGS & SILLS

Chiseled Stone Sill  
*Charcoal*



600 Series Sill  
*Brownstone*



Bella Terra Sill  
*Roman*



900 Series Sill  
*#2 Grey*



Chiseled Stone Sill - *Aspen*



Bella Terra Sill - *#2 Grey*

LINTELS

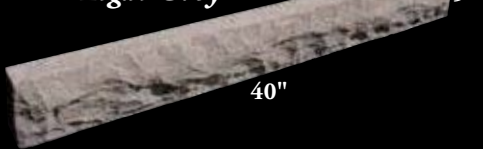
Split Stone Lintel  
*Chablis*



Split Stone Lintel  
*Brownstone*



Chiseled Stone Lintel  
*Light Grey*



Chiseled Stone Lintel - *Volterra* (Above Window)  
Split Stone Sill - *Volterra* (Below Window)

MANTELS

Chiseled Stone Mantel  
*Carmel Mountain*



Flagstone Mantel  
*Dakota Brown*



Chiseled Stone Mantel - *Carmel Mtn.*

WINDOW STONES AND KEYSTONE



Chiseled Window Stone  
*Brownstone*  
Thickness: 2"



Chiseled Keystone  
*Brownstone*  
Thickness: 3"



Architectural Trim Stone - *Brownstone*  
Thickness: 1 1/2" \*Outside measurements shown.

HEARTHSTONES

18" x 20" x 2" Will accommodate all colors.



*Dakota Brown*



*Aspen*



*Buff*



*Carmel Mtn.*



*Chablis*



*Charcoal*



*Light Grey*



*Lompoc*



*Brownstone*

BOXES

Will accommodate all colors. Shown in Smooth Limestone Texture



Light Box  
Opening: 4"



Light Box  
Opening: 4"



Electrical Box  
Opening: 2 1/2" x 4 1/2"



Doorbell / Hose Bib  
Opening: 1 1/2"



WALL & POST CAPS



Flagstone Wall Cap - *Chablis*



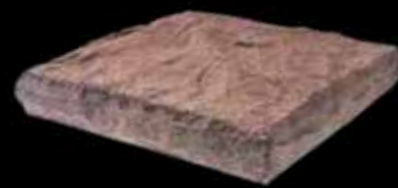
Chiseled Stone Post Cap - *Antique Cream*



Flagstone Post Cap - *Lompoc*  
20" x 20", 28" x 28", 30" x 30"  
Edge Thickness: 3 1/2"



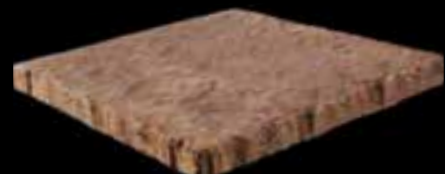
Flagstone Wall Cap - *Light Grey*  
9" x 18", 12" x 24", 14" x 24", 18" x 24"  
Edge Thickness: 2 1/2"



Chiseled Stone Post Cap - *Brownstone*  
16" x 16", 18" x 18", 20" x 26", 21" x 21"  
24" x 24", 28" x 28", 30" x 30", 32" x 32"  
36" x 36", 38" x 38", 42" x 42"  
Edge Thickness: 3 1/2" Peak Height: Varies Depending on Size



Chiseled Stone Wall Cap - *Aspen*  
8" x 24", 10" x 18", 12" x 18"  
14" x 18", 16" x 24", 18" x 24"  
Edge Thickness: 2" Peak Height: 3 1/2"



Snapped Edge Post Cap - *Carmel Mtn.*  
24" x 24"  
Edge Thickness: 1 3/4"



Snapped Edge Wall Cap - *Dakota Brown*  
12" x 24", 14" x 24"  
Edge Thickness: 1 3/4"

BRICK ACCESSORIES



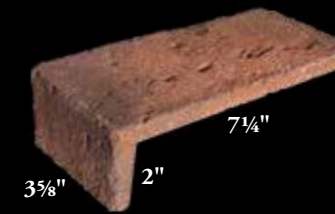
Brick Molding - *Antique Red*



Brick Corner - *Rustic Blend*



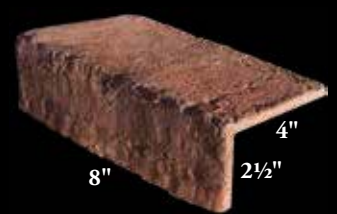
2 1/2" x 8" Corner  
*Rustic Blend*



4" x 8" Corner  
*Rustic Blend*



3-Sided Corner  
*Rustic Blend*  
Left and Right Corners Available



Long Return Corner  
*Rustic Blend*



Brick Sill  
*Rustic Blend*



2 1/2" Brick Molding  
*Rustic Blend*



2 1/2" x 10" Brick Cap  
*Tribeca*

(All inside measurements are nominal. Items do not come grouted.)





3/4" Full Brushed (White Grout)  
French Country Villa® - Bordeaux



3/4" Full Brushed (Matching Grout)  
French Country Villa® - Bordeaux



1/2" - 3/4" Deep Raked  
Mountain Villa® - Rustic Valley



1" - 1 1/2" Full Smooth Tooled  
Mountain Villa® - Rustic Valley



Full Brushed - White Grout



Shallow Brushed - Grey Grout



3/4" Full Clean Smooth Brushed  
Euro Villa® - Timberlake



1" Full Rough Brushed  
Euro Villa® - Timberlake



3/4" Full Brushed  
Tuscan Villa® - Prairie Moss



3/4" Shallow Brushed  
Mountain Villa® - Grey Quartzite



1" - 1 1/2" Full Brushed  
Mountain Villa® - Grey Quartzite



3/4" Deep Raked (Matching Grout)  
Italian Villa® - Portabella

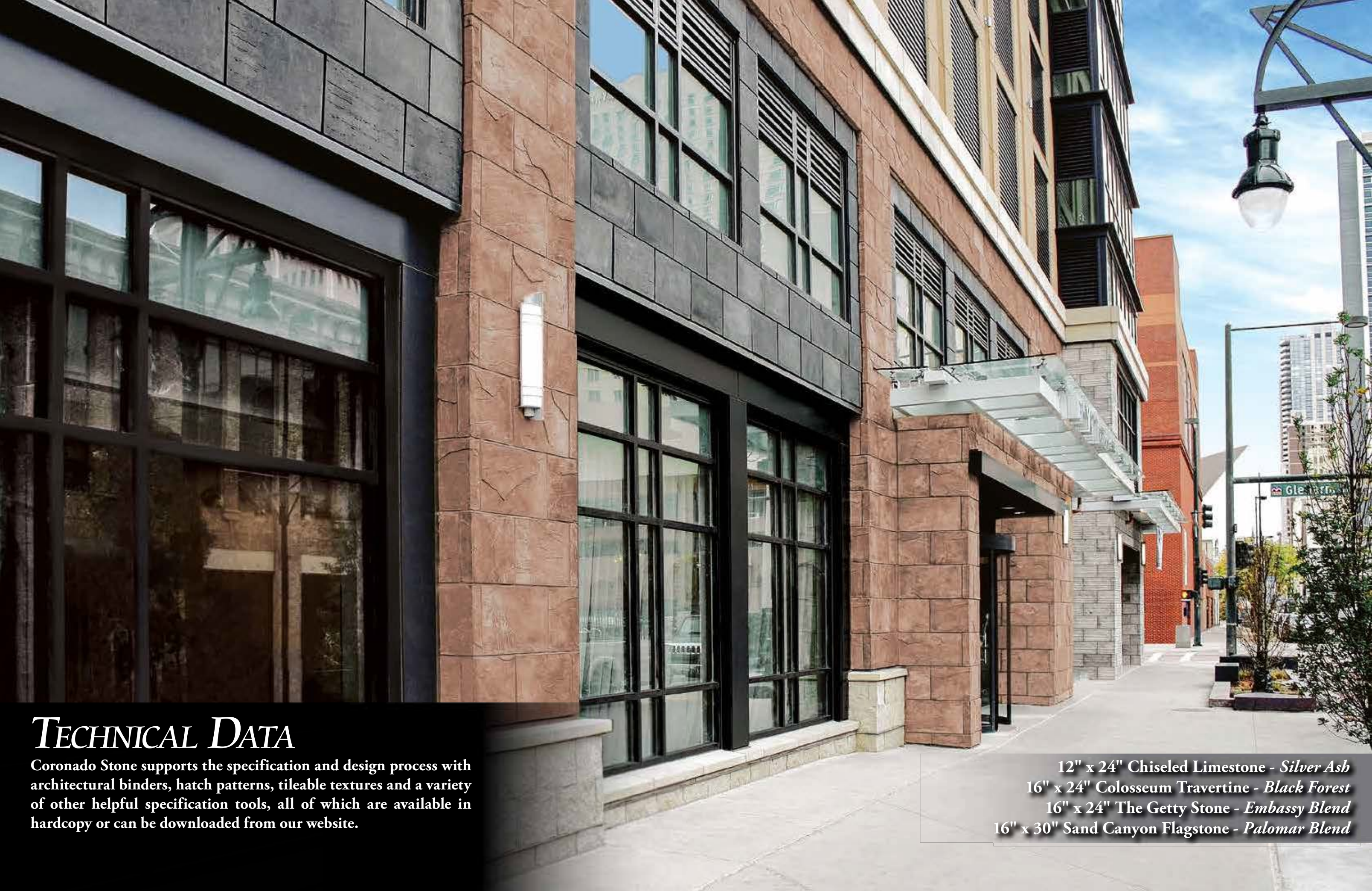


1" Full Brushed (White Grout)  
Italian Villa® - Portabella



3/4" Weeping  
Tuscan Villa® - Prairie Moss





## TECHNICAL DATA

Coronado Stone supports the specification and design process with architectural binders, hatch patterns, tileable textures and a variety of other helpful specification tools, all of which are available in hardcopy or can be downloaded from our website.

12" x 24" Chiseled Limestone - *Silver Ash*  
16" x 24" Colosseum Travertine - *Black Forest*  
16" x 24" The Getty Stone - *Embassy Blend*  
16" x 30" Sand Canyon Flagstone - *Palomar Blend*



## TECHNICAL DATA

Coronado Stone is manufactured to meet or exceed specifications for all major code approvals. Independent testing confirms compliance with ICC-ES AC51 for Precast Stone Veneer. Always check your local building codes before installing stone.


**Weight:** The average packaged weight of Coronado Stone veneer is 8 to 12 lbs. per square foot. Weight varies with thickness.

**Non-combustible:** Testing on Coronado Stone showed zero flame spread and zero smoke development.

**Integral Colors:** Coronado's production process results in a product which maintains a natural stone appearance even after many years of exposure to the elements.

**Approvals:** Coronado Stone has been tested by independent laboratories and has been approved for its intended use by:

 **ICC The International Conference of Building Officials. Report ESR-2598**

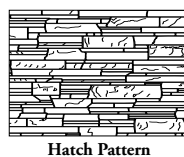
 **Texas Department of Insurance Product Approval Code. Evaluation ID EC-101**

 **Florida Department of Business & Professional Regulation Approval Code. Evaluation FL31373**

## TECHNICAL DOWNLOADS

Visit [www.CORONADO.com](http://www.CORONADO.com) to download an extensive collection of technical data and specification sheets. Click on the **(RESOURCES)** link in the top menu bar to view the following items:

- Installation Specification Sheets
- Technical Data
- Cross-Section Details
- Hatch Patterns
- Stone Tileable Textures



## TESTING

### Materials:

- Cement ASTM C150
- Sand ASTM C144 or C33
- Aggregate ASTM C33 or C330

### Testing:

- Shear Bond Test Tested in accordance with ASTM C482 Greater than 50 psi
- Water Absorption Tested in accordance with section 3.1.4 & 4.6 of ICC-ES AC51
- Freeze / Thaw Tested in accordance with ASTM C67 Less than 3% mass loss
- Unit Weight Shipping weight is less than 15 lbs. per sq. ft. Density is determined in accordance with ASTM C567
- Compressive Strength Tested in accordance with ASTM C39 Greater than 1800 psi
- Tensile Strength Tested in accordance with ASTM C190
- Flexural Strength Tested in accordance with ASTM C348

## INSTALLATION GUIDES

- Standard Stone Installation Guide (Available in English and Spanish)
  - WoodStone Installation Guide
  - Classic Series Installation Guide (Available in English and Spanish)
  - Industrial Ledge Installation Guide
  - The Wave Installation Guide
  - Lennox Stone Installation Guide
  - Floor Tile Installation Guide
  - Coronado Stone Additional Tech Notes
- [www.CORONADO.com/InstallationGuides](http://www.CORONADO.com/InstallationGuides)

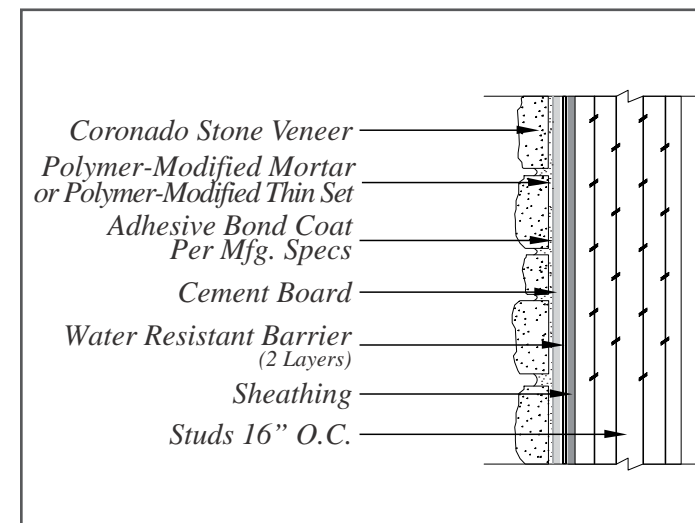
### ⚠ PROP 65 WARNING

Our cement stone veneer products contain Silica, crystalline (airborne particles of respirable size), which is known to the State of California to cause cancer.

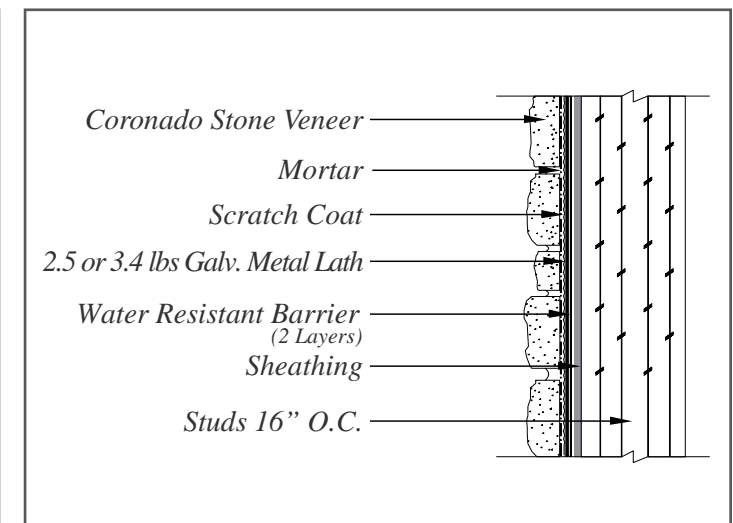
A properly fitted NIOSH approved particulate filtering facepiece should be used during dust generating processes, including cutting, sawing, and/or drilling.

For more information go to [www.P65Warnings.ca.gov](http://www.P65Warnings.ca.gov).

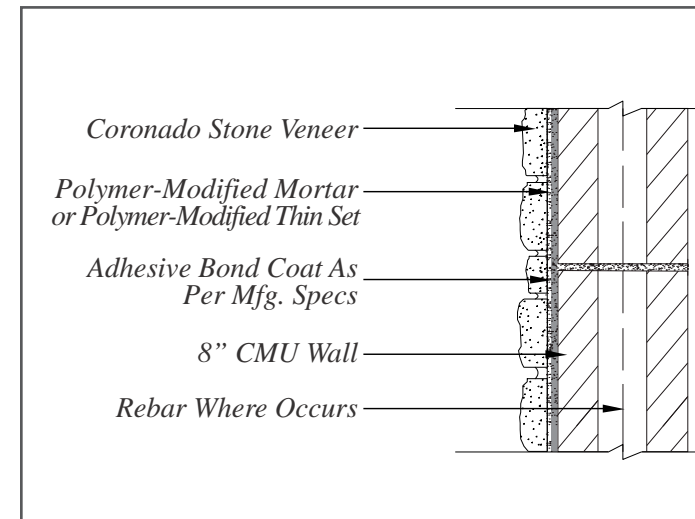
## WOOD FRAME WITH CEMENT BOARD



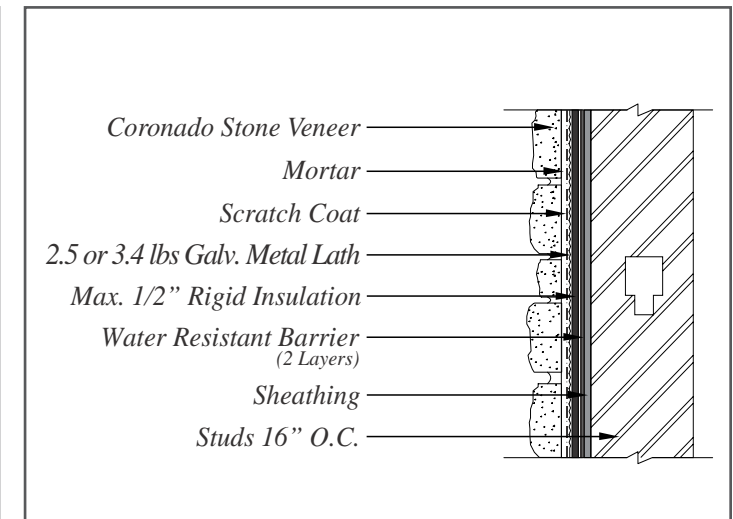
## WOOD FRAME WITH SHEATHING



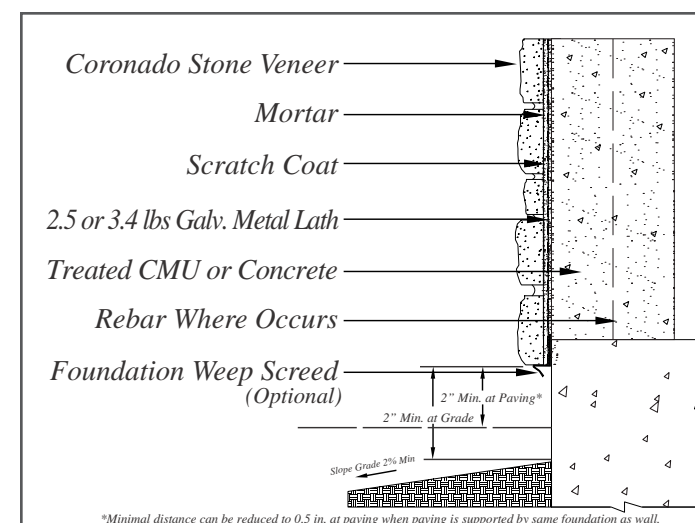
## UNTREATED / UNPAINTED CLEAN CMU



## STEEL FRAME WITH RIGID INSULATION

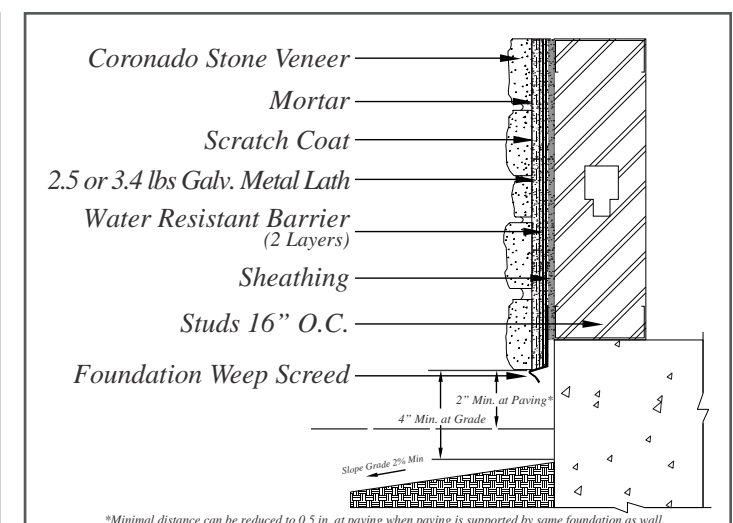


## TREATED / PAINTED CONCRETE



\*Minimal distance can be reduced to 0.5 in. at paving when paving is supported by same foundation as wall.

## STEEL FRAME WITH SHEATHING



\*Minimal distance can be reduced to 0.5 in. at paving when paving is supported by same foundation as wall.

For Additional Details Please Visit - <https://www.coronado.com/TechnicalDrawings>  
Drawings Not To Scale



Profile	Height	Length	Thickness	Weight
3" Split Limestone	3"	up to 18"	1" - 1 3/4"	7 - 10 lbs.
6" Split Limestone	6"	up to 30"	1 1/4"	7 - 10 lbs.
8" Classic Jerusalem	8"	8" - 24"	1"	7 - 10 lbs.
Adobe Brick	3 1/2" (±1/8")	15 1/4" (±1/4")	1"	4 - 6 lbs.
Aegean Coral	16"	24"	1"	7 - 10 lbs.
Amalfi Ledge	6"*	24"	1/2" - 1 1/4"	7 - 10 lbs.
Appalachian Fieldstone	7" - 9"	7" - 9"	1 1/2" - 2 1/2"	7 - 10 lbs.
Artisan Ledge	4"*	up to 20"	1" - 2"	7 - 10 lbs.
Barn WoodStone	4", 6" and 8"	36"	1"	7 - 10 lbs.
Belgian Brick	2 1/2" (±1/16")	7 3/4" (±1/8")	3/4"	4 - 6 lbs.
Belgian Castle	2" - 12"	up to 16"	1"	7 - 10 lbs.
Canyon Cobble	2" - 10"	4" - 24"	1" - 1 3/4"	7 - 10 lbs.
Canyon Ledge	1" - 7"	up to 20"	1 1/2" - 3"	7 - 10 lbs.
Caribbean Coral	4" - 12"	4" - 16"	1"	7 - 10 lbs.
Carolina Rubble	2" - 10"	4" - 16"	1 1/4" - 2 1/4"	7 - 10 lbs.
Chiseled Limestone	12"	24"	1"	7 - 10 lbs.
Clinker Brick	2 1/2"	4" and 8"	3/4" - 2"	4 - 6 lbs.
Colosseum Travertine	16"	24"	1"	7 - 10 lbs.
Coronado Honey Ledge	2" and 4"*	up to 20"	1" - 2"	7 - 10 lbs.
Coronado Strip Stone	1 1/2" - 2"	up to 23"	1 1/4" to 2"	7 - 10 lbs.
Country Castle	1 1/2" - 7 1/2"	4" - 20"	1 1/2"	7 - 10 lbs.
Country Rubble	2" - 8"	up to 23"	1" - 2 1/2"	7 - 10 lbs.
Creek Rock	3" - 10"	3" - 10"	3/4" - 2 1/2"	7 - 10 lbs.
Eastern Mountain Ledge®	1" - 5"*	up to 22"	1" - 3"	7 - 10 lbs.
Element LedgeStone	2" - 6"*	up to 20"	3/4" - 2"	7 - 10 lbs.
English Rubble	6" - 14"	8" - 32"	1 1/4" - 2"	7 - 10 lbs.
French Country Villa®	2" - 7"	up to 18"	1 1/2" - 2"	7 - 10 lbs.
French Limestone	12"	24"	1"	7 - 10 lbs.
The Getty Stone	16"	24"	1" - 1 3/4"	9 - 12 lbs.
Hill Country Limestone	12"	24"	1"	7 - 10 lbs.
Idaho Drystack	1" - 4"	4" - 16"	1 1/4" - 2"	7 - 10 lbs.
Industrial Ledge	2", 3", 4" & 5"	4" - 30"	3/4" - 2"	7 - 10 lbs.
Italian Villa®	2" - 8"	up to 16"	1 1/2" - 3 1/4"	7 - 10 lbs.
Minnesota Fieldstone	6" - 12"	6" - 12"	1 1/2" - 2 1/2"	7 - 10 lbs.
Montana Ledge	1" - 4"*	up to 20"	1" - 2 1/2"	7 - 10 lbs.
Mountain Strip Stone	1 1/2" and 3"	up to 23"	1 1/4" to 2"	7 - 10 lbs.
New England Brick	2 5/8" (±1/16")	9 1/2" (±1/8")	1/2" (±1/16")	4 - 6 lbs.

Profile	Height	Length	Thickness	Weight
Old Country Ledge	2" - 7"	4" - 20"	1" - 1 3/4"	7 - 10 lbs.
Old World Ledge	1" - 5"	4" - 16"	1" - 1 1/2"	7 - 10 lbs.
Osage	3" - 12"	4" - 28"	1" - 1 1/2"	7 - 10 lbs.
Pavilion Stone	4" - 12"	4" - 20"	1/2" - 1"	7 - 10 lbs.
Playa Vista Limestone	2 1/2", 5" and 7 3/4"	up to 24"	1" - 1 1/2"	7 - 10 lbs.
Prairie Stone	2" to 5"	4" - 30"	1 1/4"	7 - 10 lbs.
Pro-Ledge®	4"*	up to 20"	1" - 1 1/2"	7 - 10 lbs.
Quick Stack®	2" or 4"*	up to 20"	1" - 2"	7 - 10 lbs.
Refined WoodStone	6"	36"	1"	7 - 10 lbs.
River Rock	2" - 10"	4" - 10"	3/4" - 2 1/2"	7 - 10 lbs.
Rocky Mountain Ledge	1" - 7"	up to 24"	1" - 2 1/2"	7 - 10 lbs.
Roman Brick	2 1/4" (±1/8")	10" (±1/8")	5/8" (±1/16")	4 - 6 lbs.
Rough Cut WoodStone	6"	36"	1"	7 - 10 lbs.
Sawtooth Ledge	3" and 6"	up to 20"	1"	7 - 10 lbs.
Santa Barbara	4" - 14"	8" - 32"	1 1/4" - 2"	9 - 12 lbs.
Sand Canyon Flagstone	16"	30"	1"	9 - 12 lbs.
Sand Mold Brick	2 3/4" (±1/8")	8 3/4" (±1/8")	1/2"	4 - 6 lbs.
Sculptured Brick	2 1/2" (±1/8")	7 5/8" (±1/4")	3/4" - 1"	4 - 6 lbs.
Sicilian Brick	2 1/2" (±1/8")	7 3/4" (±1/8")	1/2"	4 - 6 lbs.
Sierra Ledge	4"*	up to 20"	1 1/2" - 2"	7 - 10 lbs.
Smooth Limestone	12"	24"	1"	7 - 10 lbs.
Sonora Sandstone	12"	28"	1"	7 - 10 lbs.
Special Used Brick	2 1/2" (±1/8")	7 3/4" (±1/4")	1/2" (±1/16")	4 - 6 lbs.
Split Fieldstone	6" - 20"	6" - 20"	1" - 2"	7 - 10 lbs.
Texas Rubble	2" - 8"	up to 23"	1" - 2 1/2"	7 - 10 lbs.
Tuscan Villa®	2" - 12"	4" - 16"	1" - 1 3/4"	7 - 10 lbs.
Urbana Smooth	7 1/2"	15 1/2"	3/4" - 1"	7 - 10 lbs.
Urbana Split	8"	16"	1"	7 - 10 lbs.
Venetian Villa®	2" - 14"	4" - 32"	1" - 2 1/2"	7 - 10 lbs.
Viejo Ranch	2" - 18"	up to 30"	2" - 3"	9 - 12 lbs.
Virginia Ledge	2" or 4"*	up to 20"	1" - 3"	7 - 10 lbs.
Weathered Brick	2 5/8" (±1/8")	9 7/8" (±1/8")	1/2" (±1/16")	4 - 6 lbs.
Weathered Edge	1" - 7"	up to 32"	1" - 2 1/2"	7 - 10 lbs.
Wirecut Brick (Oversized)	3 5/8" (±1/16")	11 1/2" (±1/8")	1/2" (±1/16")	4 - 6 lbs.
Wirecut Brick (Standard)	2 5/8" (±1/16")	7 7/8" (±1/8")	1/2" (±1/16")	4 - 6 lbs.

All sizes and weights are nominal and may vary slightly depending on profile.  
 Weight is based on one square foot of stone.  
 Contact Coronado for further details.  
 \* Stone sizes within panels may vary.

Color	View Color On Page
Antique Cream	62, 74, 75, 117
Aspen	40, 56, 57, 60, 64, 68, 70, 74, 76, 86, 103, 115, 116, 117
Black Forest	9, 10, 12, 14, 25, 48, 49, 50, 82, 121-122
Bordeaux	35-36, 43, 119
Brookshire	80, 127
Brookside	47, 50, 58, 59, 62, 66, 82, 100
Cape Cod Grey	34, 47, 55, 56, 57, 66, 67
Carmel Mountain	44, 51, 52, 56, 60, 64, 68, 75, 85, 89, 96, 109, 115, 116, 117
Cathedral Grey	56, 58
Chablis	44, 47, 50, 51, 59, 61, 64, 68, 69, 70, 81, 82, 86, 115, 116, 117
Coastal Brown	56, 57, 60, 64, 74, 86, 93-94
Country Beige	1, 2, 9, 16
Cream	5-6, 8, 10, 11, 15, 16, 23-24, 25, 28
Dakota Brown	34, 37, 40, 48, 59, 64, 66, 76, 77, 78, 81, 82, 85, 88, 89, 95, 110, 113-114, 115, 116, 117
Embassy Blend	14, 121-122
English Grey	55, 80
Falmouth	54, 58
Florentine	41, 95
French White	1, 2, 3, 9
Genoa Sands	27, 28
Grey	27, 38
Grey Granite	2, 29
Grey Quartzite	44, 50, 52, 59, 62, 63, 67, 73, 74, 76, 85, 88, 95, 119, Back Cover
Harvard Grey	5-6, 8
Huron	50, 52, 54, 60, 62, 63, 86
Lompoc	71-72, 81, 89, 96, 113-114, 116, 117
Madison County	38, 59, 64, 81, 88, 96
Monarch	41, 62
Mountain Sunset	87, 88
Mount Vernon	4, 53
Northland	4, 53
Oakbrook	30, 50
Palomar Blend	3, 15, 121-122
Pine Creek	31-32
Portabella	40, 120
Prairie Moss	42, 120
Provo Canyon Grey	39, 40, 60
Roman	Cover, 5-6, 12, 115
Shasta	52, 63
Silver Ash	1, 2, 3, 4, 7, 10, 11, 14, 16, 53, 121-122
Smoke	1, 29, 53, 54
Sunset Blend	37, 61, 66, 74
Texas Cream	37, 74, 75
Verona	40, 43, 95
Versailles	37, 44
Volterra	39, 40, 43, 115
Walnut	25, 27
Wheat	59, 95, 103
White	4, 27, 28, 49
White Sands	8, 13

Toll Brothers www.tollbrothers.com	Builder CA, AZ, NV	Cover, 8, 21, 23-24, 42, 47, 49t, 55t, 57, 76, 102, 105b, 106, 108, 110, 112, 127
LandCreativeInc. www.landcreativeinc.com	Landscape Architect Costa Mesa, CA	Cover
Arthur Rutenberg Homes www.arthurrutenberghomes.com	Builder Clearwater, FL	Back Cover, 35-36, 39, 73
Rob Harris Productions, Inc. www.rob-harris.com	Photographer Tampa, FL	Back Cover, 35-36, 39, 73
Studio V www.studiointeriors.com	Interior Architect Scottsdale, AZ	3
Architect Orange www.aoarchitects.com	Architect Orange, CA	5-6
Infinity Home Collection www.infinityhomecollection.com	Builder Denver, CO	9, 85
Zephyr www.zephyrpartners.com	Builder Encinitas, CA	12
William Lyon Homes www.lyonhomes.com	Builder Newport Beach, CA	13, 34
Vance Fox Photography www.vancefox.com	Photographer Reno, NV	13, 34
Applied Photography LLC www.apgs.net	Photographer Orange, CA	17-18, 26
Lennar www.lennar.com	Builder Miami, FL	17-18, 20, 22, 27, 29, 30
KB Home www.kbhome.com	Builder Los Angeles, CA	25
SDK Atelier www.sdkatelier.com	Architect Irvine, CA	27, 30
Eric Figge Photography www.ericfiggephoto.com	Photographer Orange, CA	27, 30
Pardee Homes www.pardeehomes.com	Builder Bonsall, CA	28
Wendy Black Rodgers Interior www.wbrint.com	Interior Designer Scottsdale, AZ	39b
Castone www.castone.org	Distributor Knoxville, TN	38
Timber Ridge Properties www.timberidgeproperties.net	Builder Denver, CO	40, 69t, 74, 77
Weber Design Group www.weberdesigngroup.com	Builder Naples, FL	41
Tom Harper www.tomharperphotography.com	Photographer Naples, FL	41
Stone Creek Furniture www.stonecreekfurniture.com	Remodeler Scottsdale, AZ	44
Christopher Mayer	Photographer Orange, CA	47
Partners In Building www.partnersinbuilding.com	Builder Houston, TX	49b
Built By Sky	Builder Calgary, AB	55b
Sustain Scape www.sustainscapeaz.com	Landscape Designer Scottsdale, AZ	60
Drees Homes www.meritagehomes.com	Builder Phoenix, AZ	63
Process Design Build, L.L.C. www.processdesignbuild.com	Builder Tucson, AZ	66
Van Metre Homes www.vanmetrehomes.com	Builder Ashburn, VA	67
Red Rock Contractors www.builtredrock.com	Builder Mesa, AZ	83-84
Aron Photography www.aronphoto.com	Photographer Encinitas, CA	85
Frontier Homes www.fhcommunities.com	Builder Moreno Valley, CA	86
EON Design Group www.eondesignco.com	Designer Los Angeles, CA	93-94
CalAtlantic Homes www.calatlantichomes.com	Builder Las Vegas, NV	97-98
Camelot Homes www.camelothomes.com	Builder Scottsdale, AZ	101
Meritage Homes www.meritagehomes.com	Builder Phoenix, AZ	104
Arizona Stone www.arizonastone.com	Distributor Phoenix, AZ	105t
Shea Homes www.sheahomes.com	Builder Gilbert, AZ	109
Mark Boisclair Photography, Inc. www.markboisclair.com	Photographer Phoenix, AZ	111
Maracay Homes www.maracayhomes.com	Builder Scottsdale, AZ	111



## 50 YEAR LIMITED WARRANTY

Coronado Stone Products® wall veneers are protected under this warranty for a period of 50 years from the date purchased, when used on a vertical structure which conforms to local building codes and when installed in accordance with the manufacturer's instructions. Warranty coverage specifically excludes: damage resulting from structure settlement and other types of wall movement, contact with paint or chemicals, discoloration due to contaminants, staining, oxidation and water damage.

This warranty covers only manufacturing defects in Coronado Stone Products® wall veneers and is limited to the replacement or repair of defective materials only and does not cover the cost of removal or installation of defective products. This warranty is limited to the original purchaser and is non-transferable to any subsequent owner.



Santa Barbara - Brookshire (Coursed Pattern)

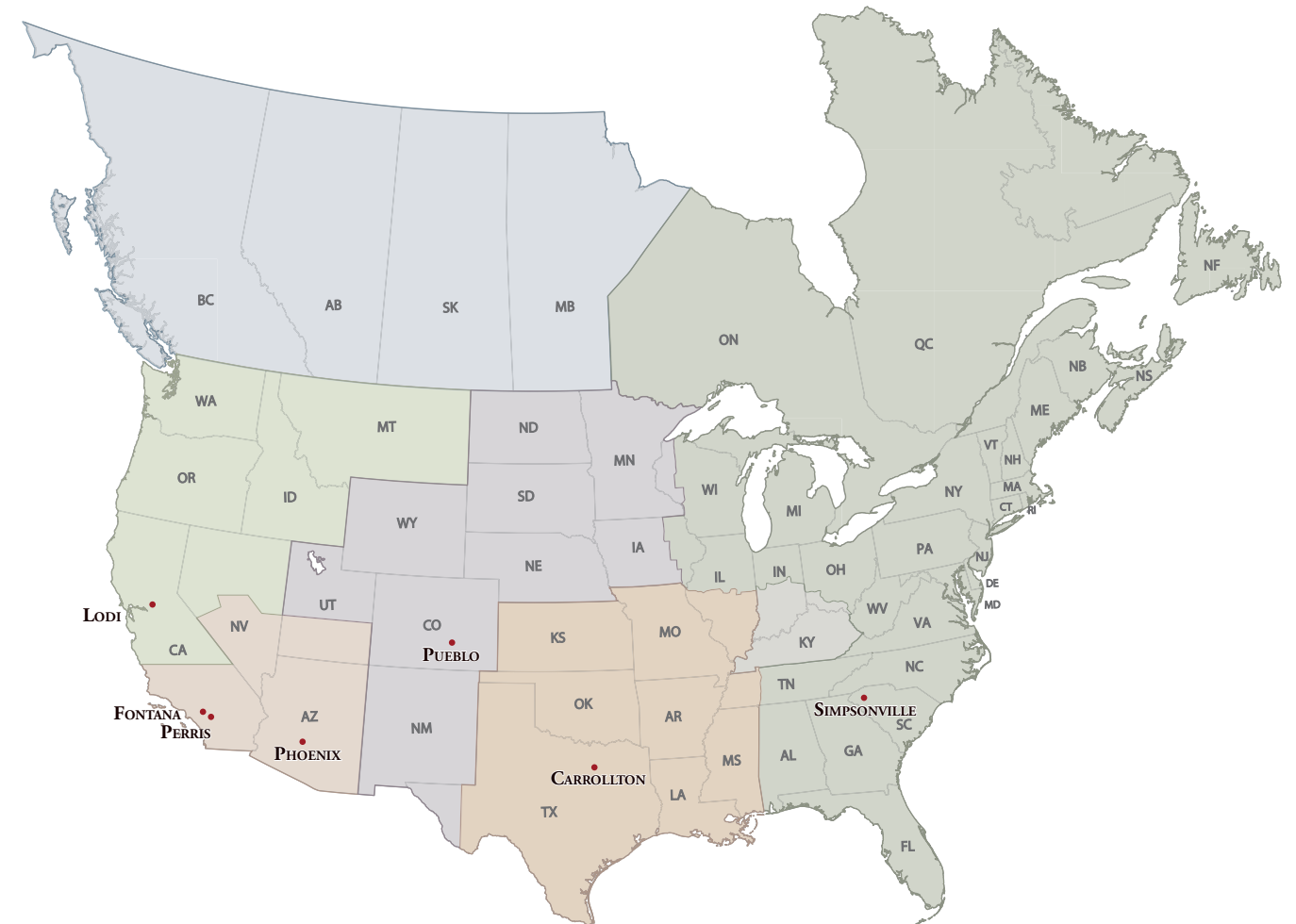
In 1960, there was only one stone manufactured in California. It was a 2½' x 4' sheet of concrete which was broken up into random shapes at the job site. Mel Bacon saw the need for something better and started making his own stone. He soon developed the first random shaped stones from individual molds which led to the development of many of today's popular varieties of ledge stones and ashlar patterns.

As a mason, Mel experienced the difficulty of installing stone that was not created with the installer in mind. It was heavy and the shapes and sizes were difficult to piece together. He realized that through proper pattern and mold design, ease of installation could be achieved. From that moment, ease of installation became the benchmark for every pattern of stone Mel created. Easy installation is not only a time saver, it's a project saver.

The pride we take in the creation of our product shows in the quality experience you will enjoy as one of our valued customers. Give Coronado the opportunity to make you a believer. Our mission is your satisfaction!

## 60 YEARS OF MANUFACTURING EXCELLENCE

Coronado manufactures and distributes its high quality stone at seven factories conveniently located across North America



Northwest Region serviced by the Lodi, CA Manufacturing Facility  
**(209) 334-1380**

Southwest Region serviced by the Fontana, CA Manufacturing Facility  
**(800) 847-8663**

Mountain Region serviced by the Pueblo, CO Manufacturing Facility  
**(719) 470-7381**

Desert Region serviced by the Phoenix, AZ Manufacturing Facility  
**(602) 732-6558**

Central Region serviced by the Carrollton, TX Manufacturing Facility  
**(972) 434-2515**

Southeast Region serviced by the Simpsonville, SC Manufacturing Facility  
**(864) 962-1221**





Old Country Ledge - Grey Quartzite

Five Dollars



**CORONADO**®

The Leader in Manufactured Stone, Brick and Tile Products

11191 Calabash Ave. • Fontana, CA 92337  
Phone: (800) 847-8663 • Fax: (909) 357-7362  
sales@coronado.com

WWW.CORONADO.COM

Due to photographic and printing variations, brochure colors may not be accurate. All sizes are nominal.  
We suggest examination of Coronado product samples prior to purchase.