

# Brick Weaves a Brighter School

Case Study in Masonry:  
Washington Heights Elementary School  
Replacement Structures, Fort Worth ISD



Acme Brick  
Featherlite Hill Country Stone



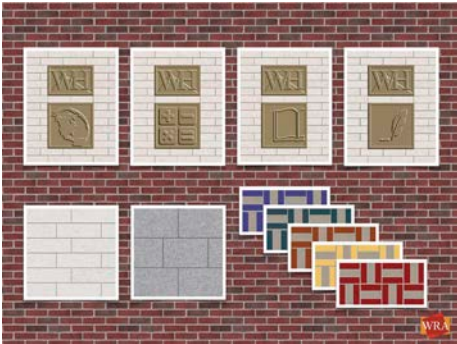


# Acme Brick Masonry Makes a Bright New Beginning for a School Once Underground

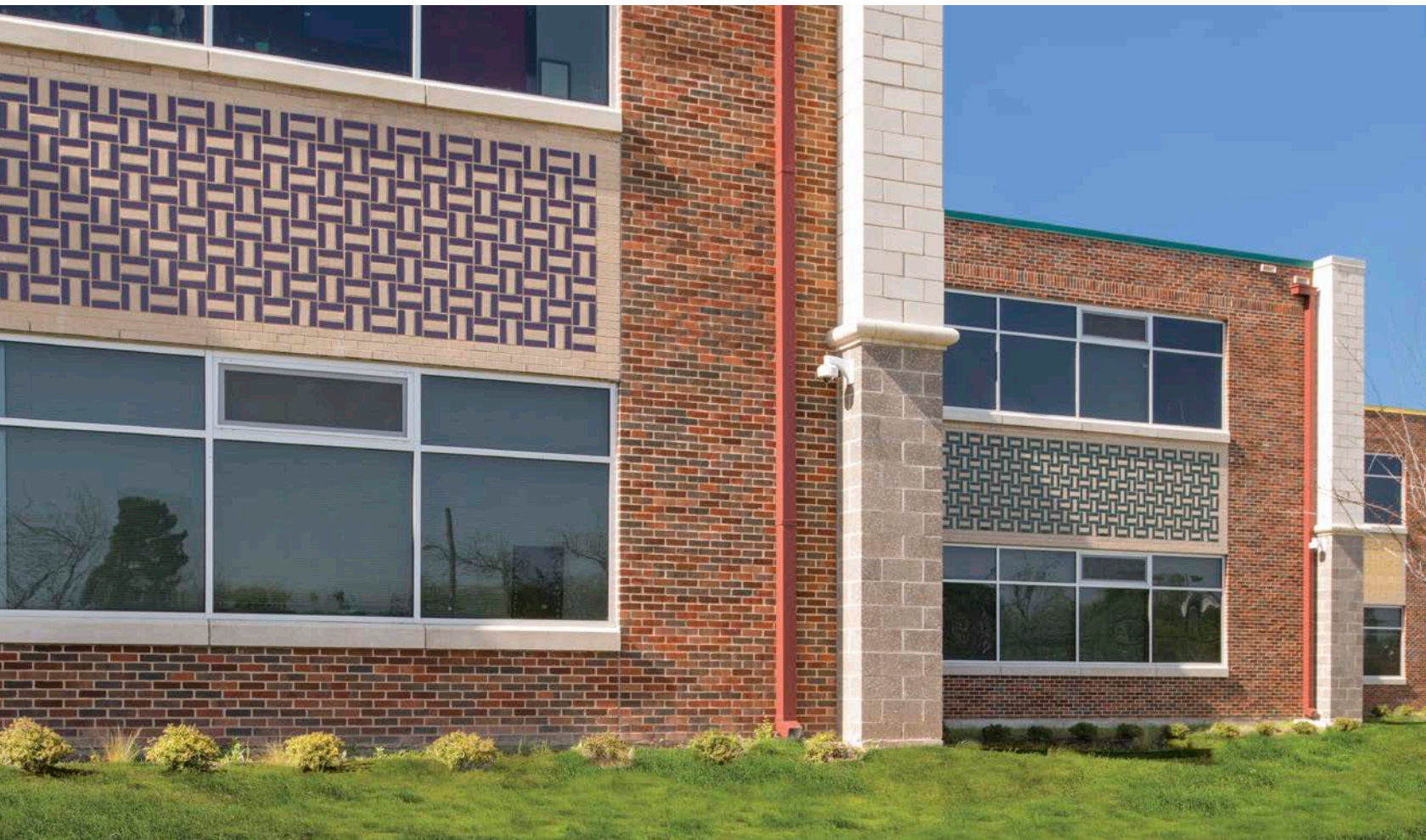
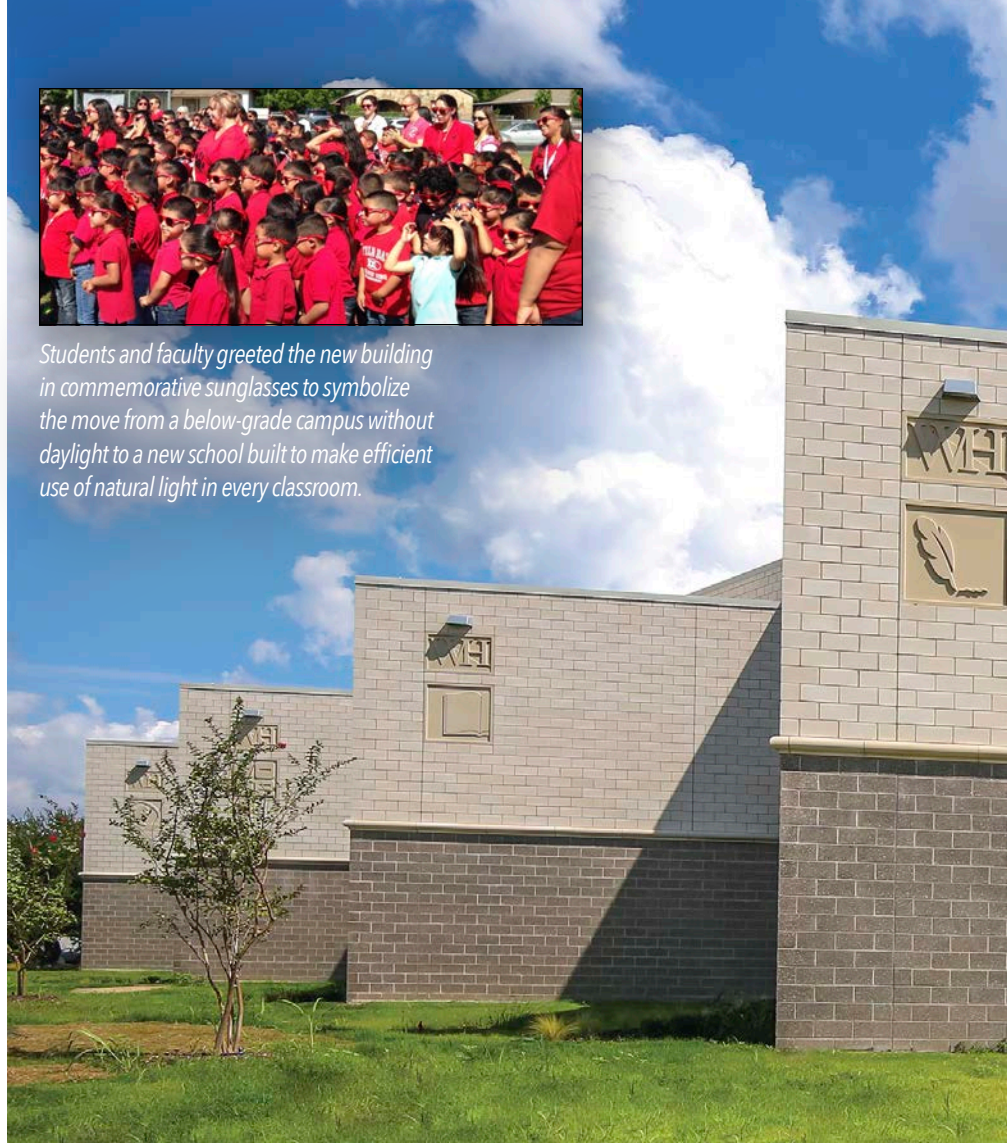
Washington Heights Elementary School is back in the sunshine, rebuilt above grade to replace a 1979 underground school. Airport noise mitigation now comes from angled walls of Featherlite Hill Country Stone. Entry and playground facades have colorful walls of Acme Brick, animated by a multicolor basketweave pattern that celebrates the school's prominent site. With Acme's durable, beautiful masonry products, the future is bright, indeed.



*Students and faculty greeted the new building in commemorative sunglasses to symbolize the move from a below-grade campus without daylight to a new school built to make efficient use of natural light in every classroom.*



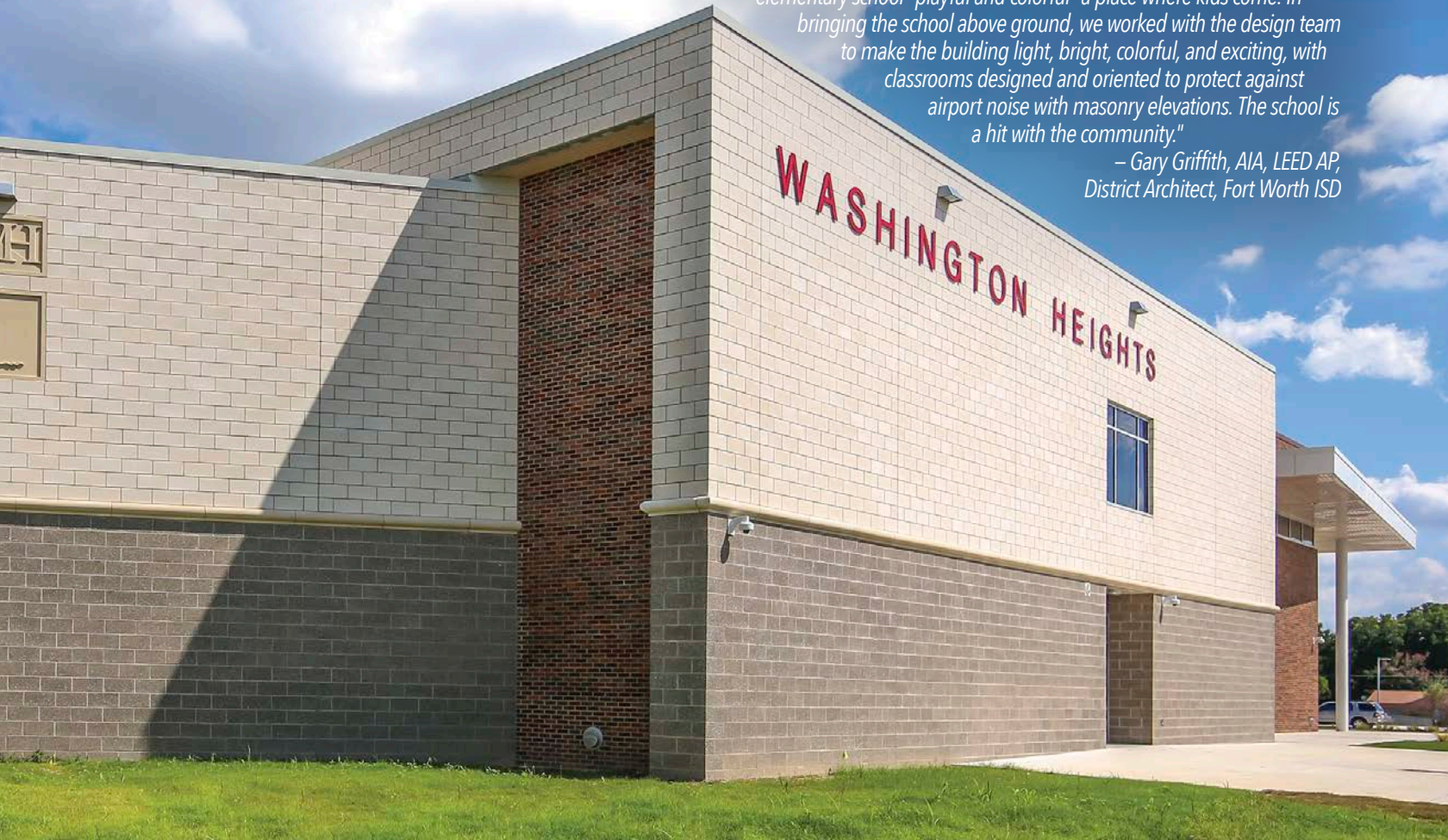
*Architects created a rich vocabulary of Featherlite Hill Country Stone, with academic insignia insets, and Acme Brick laid in a basketweave pattern on a blend of venerable contrasting brick.*





"The design team achieved our goal of creating a school that reflected its neighborhood. The brick patterning and color scheme make clear this is an elementary school—playful and colorful—a place where kids come. In bringing the school above ground, we worked with the design team to make the building light, bright, colorful, and exciting, with classrooms designed and oriented to protect against airport noise with masonry elevations. The school is a hit with the community."

— Gary Griffith, AIA, LEED AP,  
District Architect, Fort Worth ISD



**Floor Plan: First Floor**

- 1 Entry Plaza and Main Entrance
- 2 Front Office Suite
- 3 Gymnasium and Stage
- 4 Music Room
- 5 Cafeteria
- 6 Kitchen
- 7 Pre-K Classroom
- 8 Kindergarten Classroom
- 9 First Grade Classroom
- 10 Resource Classroom
- 11 LINC Classroom



**Floor Plan: Second Floor**

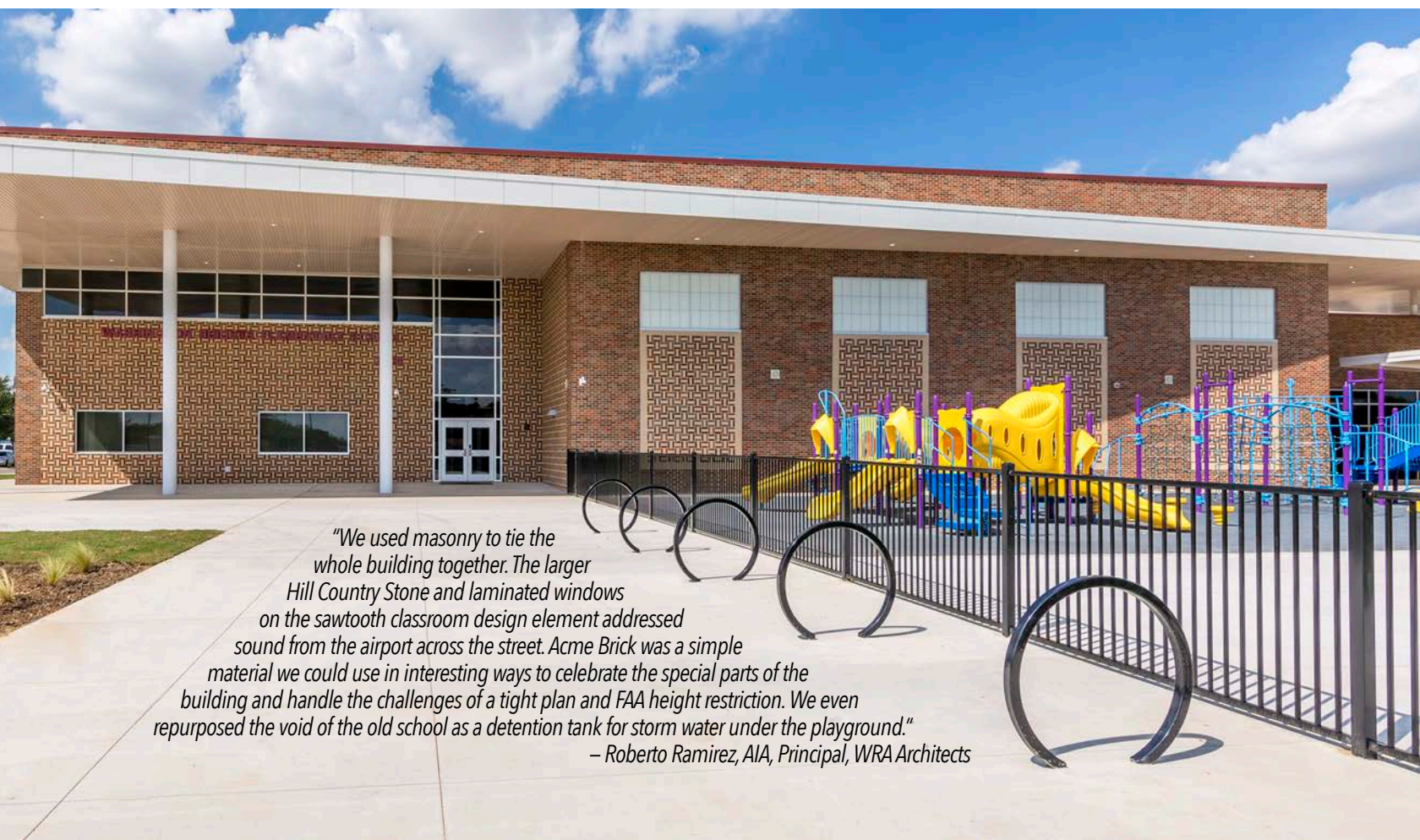
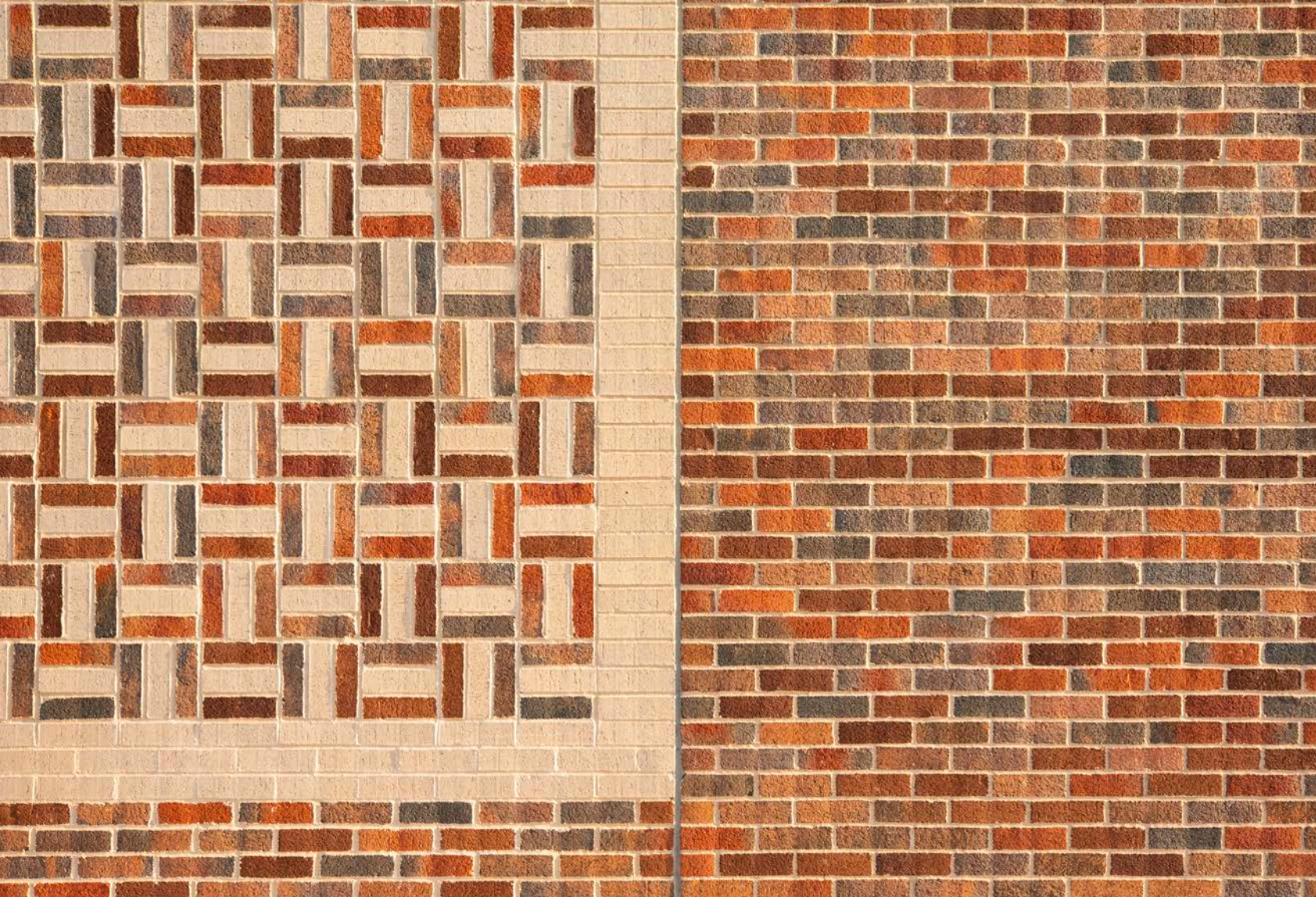
- 1 Media Center /Library
- 2 Art Room
- 3 Exploratorium
- 4 Second Grade Classroom
- 5 Third Grade Classroom
- 6 Fourth Grade Classroom
- 7 Fifth Grade Classroom
- 8 Media Classroom
- 9 Resource Classroom
- 10 Art Kiln



^ north





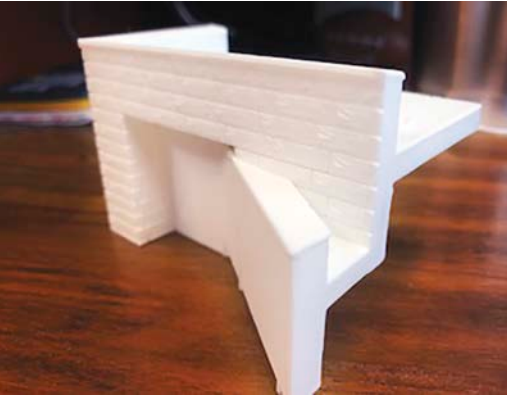


*"We used masonry to tie the whole building together. The larger Hill Country Stone and laminated windows on the sawtooth classroom design element addressed sound from the airport across the street. Acme Brick was a simple material we could use in interesting ways to celebrate the special parts of the building and handle the challenges of a tight plan and FAA height restriction. We even repurposed the void of the old school as a detention tank for storm water under the playground."*

*– Roberto Ramirez, AIA, Principal, WRA Architects*

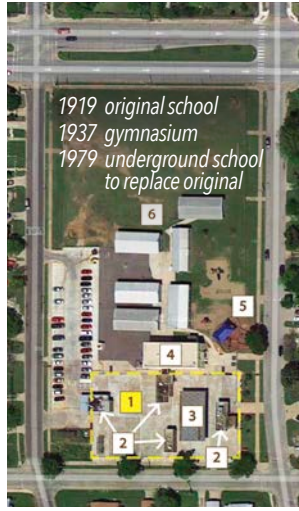


Study Model at Angled Classroom Wall Intersections



Site Plan  
Existing Elementary School

- Main Building 1
- Underground
- Elevators 2
- Covered 3
- Outdoor Playcourt
- Above 4
- Ground Gymnasium
- Playgrounds 5
- Portable 6
- Classrooms



Site Plan

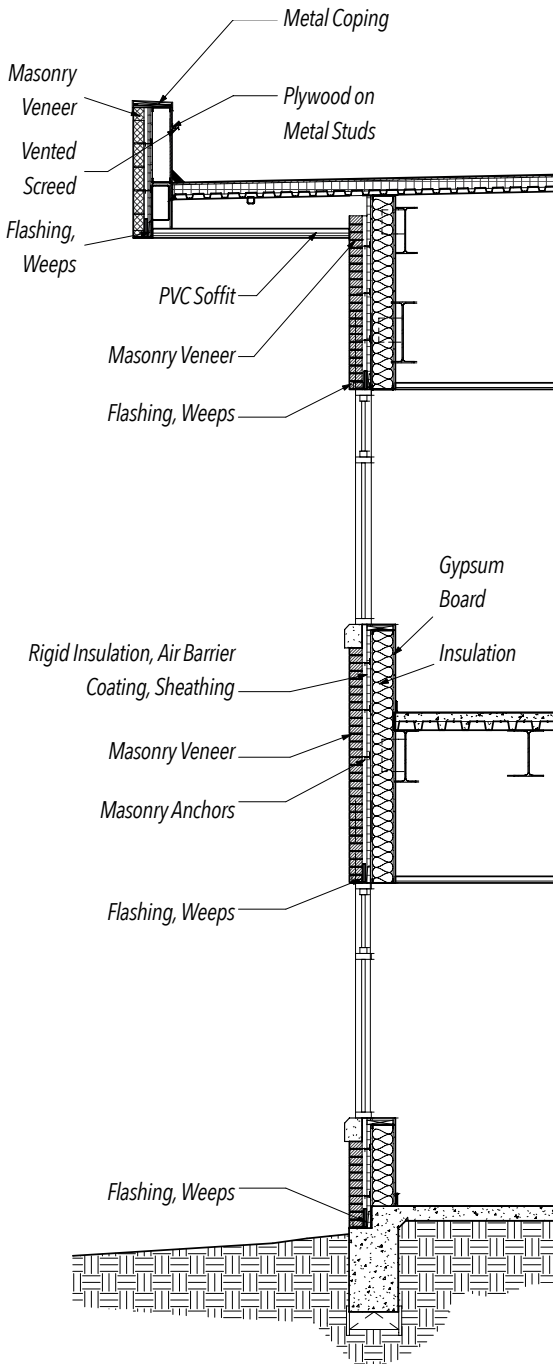
New Elementary Replacement School

(constructed onsite with school in session)

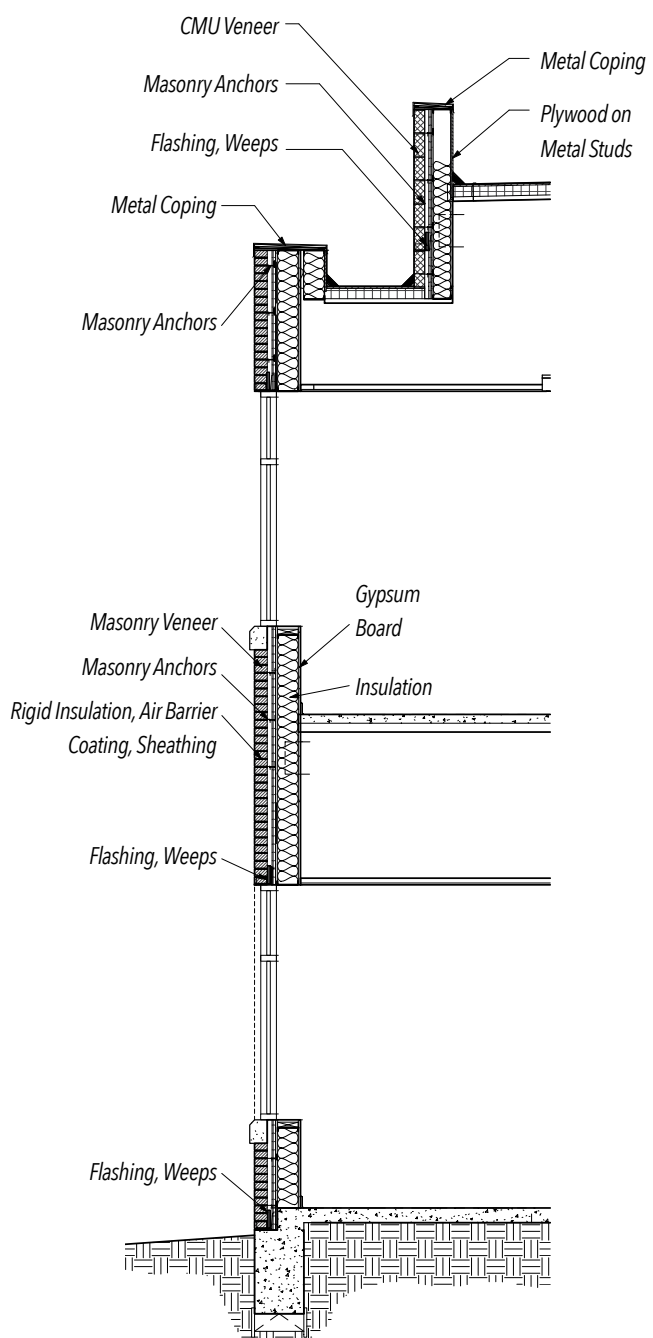
- 1 Entry Plaza and Main Entrance
- 2 New School
- 3 Parent Drop-Off
- 4 Playgrounds
- 5 Outdoor Eating
- 6 Detention Tanks

^ north

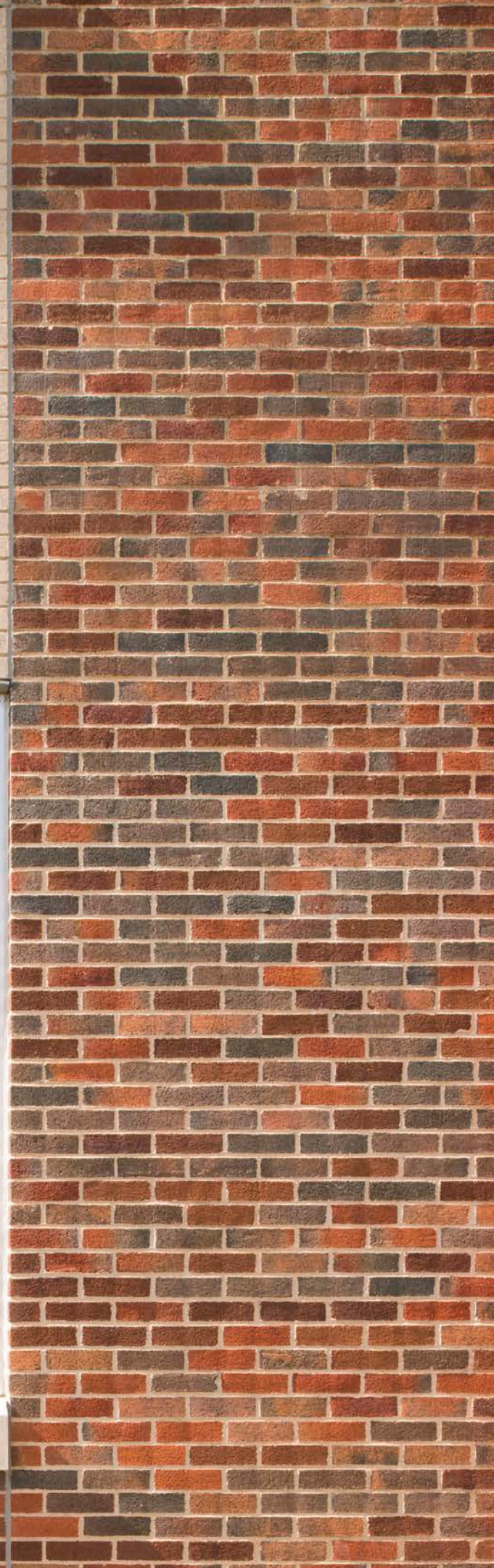
Section at Angled Classroom Wall Intersection  
Hill Country Stone Prominent



Section at Angled Classroom Wall Intersection  
Acme Brick Prominent







*Playful colors of Elgin Butler glazed brick and imaginative patterns highlight the walls of a school once buried away from the sky, now brilliantly above ground on its century-old site.*

**Washington Heights Elementary School,  
Fort Worth ISD**  
architect  
WRA Architects, Dallas  
general contractor  
Cadence McShane, Addison, Texas  
masonry contractor  
Wilks Masonry, Fort Worth



**From the earth,  
for the earth.®**

LEED-accredited engineers  
and full-service support

**Acme Brick materials**

**Acme Brick**

FSP Special Mingle (75% B100, 25% B15)  
Modular Heritage; DVP Driftwood  
Blend Velour; Elgin Butler Burnt Sienna,  
Ultra Yellow, Evergreen, Purple Heart  
(basketweave) Modular Glazed

**Featherlite Building Products**

Charcoal, Limestone Hill Country Stone

