

WINSTON®



SPECIAL ORDER  
2020

# WINSTON®

## OUTDOOR COLLECTIONS

---

Since 1975 Winston has answered to the growing trend toward outdoor styles with an indoor feel by offering ultra-comfortable furniture with original details, customizable finishes, and resort grade materials.

This season Winston embarks on a brand revival and a renewed commitment to offering comfort, function and style. We have thoughtfully curated a collection of outdoor furnishings that demonstrate technical form, innovative material construction and trend-forward designs for versatile applications and vast appeal.

We draw on our rich heritage in the outdoor furniture sector and aim to reclaim our position as an industry leader by staying true to the things that have worked for us in the past, while embracing exciting new models and fresh designs.

# CONTENTS

## COLLECTIONS

Banyon Bay  
2 | 5

Belvedere Cushion  
6 | 7

Belvedere Sling  
8 | 9

Compass\*  
10 | 11

Jasper\*  
12 | 13

Key West Padded Sling  
14 | 15

Key West Sling  
16 | 17

Manor Deep Seating  
18 | 19

Marseille  
20 | 21

Palazzo Cushion  
22 | 23

Palazzo Sling  
24 | 25

Savoy Cushion  
26 | 27

Savoy Sling  
28 | 29

Seagrove II Sling  
30 | 31

Southern Cay Cushion  
32 | 33

Southern Cay Modular  
34 | 35

Southern Cay Sling  
36 | 37

Southern Cay Woven  
38 | 39

Veneto Cushion  
40 | 41

Veneto Sling  
42 | 43

## TABLES, ACCESSORIES & FINISHES

Extruded Aluminum  
Slat Tops  
44 | 45

Traditional Cast  
Aluminum Tops  
46 | 47

Solid Surface Stamped  
Aluminum Tops  
46 | 47

Table Bases For  
Alternative Tops  
48 | 49

Obscure Glass  
Top Tables  
50 | 51

Stamped Aluminum  
Tables  
50 | 51

Solid Top  
Tables\*  
50 | 51

Frame  
Finishes  
52

\* New Product Introductions

# BANYAN BAY

Designed by John Caldwell

- Contemporary design | Modular aspect allows configurations for any setting
- Furniture components held together with two nylon clips | Nylon clips keep furniture from moving front/back and side/side
- Frame created from extruded aluminum | Cushions lock into frame without the need of ties
- Available in all finishes | Stamped aluminum table tops



# BANYAN BAY | CUSHIONED SECTIONAL



**Armless Lounge**  
M74002  
32.5"W 32.5"D 32.5"H



**Arm Lounge Chair**  
M74004  
36.5"W 32.5"D 32.5"H



**Square Corner Section**  
M74032  
32.5"W 32.5"D 32.5"H



**Circular Corner Section**  
M74033  
32.5"W 32.5"D 32.5"H



**Left or Right End Unit**  
M74035  
32.5"W 32.5"D 32.5"H



**Action Swivel Tilt Lounge Chair\***  
M74020  
35"W 36"D 39"H



**Circular Ottoman**  
M74038  
32.5"W 32.5"D 18.5"H



**Square Ottoman**  
M74008  
32.5"W 32.5"D 18.5"H



**Pedestal Ottoman**  
M74028  
28"W 26"D 17"H



## Oyster Weave

Having the look and feel of real rattan, this proprietary weave creation was the result of dedicated time and effort. The material itself is a mix of polyethylene and UV inhibitors with no acrylic additives. Both the texture and coloration are achieved from the hands of an extrusion artist who intuitively adds the correct amount of pigment to the weave during precise temperature intervals in the production process. The weave coloration is infused throughout the core of the weave. The result is a beautiful, natural weathered weave material. All pieces of Banyan Bay are hand woven, strand by strand, by highly skilled artists. One chair can take more than a day to weave.

Banyan Bay can be ordered with only solid or textured fabrics.  
Patterned fabrics such as stripes and prints are not available on modular collections.



## BANYAN BAY

Designed by John Caldwell

- Contemporary design | Modular aspect allows configurations for any setting
- Furniture components held together with two nylon clips | Nylon clips keep furniture from moving front/back and side/side
- Frame created from extruded aluminum | Cushions lock into frame without the need of ties
- Available in all finishes | Stamped aluminum table tops

# BANYAN BAY | CUSHIONED SEATING



**Cocktail Table w/ Stamped Top**  
M74007  
32.5"W 32.5"D 18"H



**Rectangular Coffee Table**  
M74067  
40.5"W 24.5"D 18"H



**24" End Table w/ Stamped Top**  
M74006  
24"W 24"D 19.5"H



**Console Table**  
M74050  
64.5"W 15.5"D 26.5"H



**Love Seat**  
M74022  
64.5"W 33"D 30.5"H



**Sofa**  
M74003  
95.5"W 33"D 30.5"H



## Oyster Weave

Having the look and feel of real rattan, this proprietary weave creation was the result of dedicated time and effort. The material itself is a mix of polyethylene and UV inhibitors with no acrylic additives. Both the texture and coloration are achieved from the hands of an extrusion artist who intuitively adds the correct amount of pigment to the weave during precise temperature intervals in the production process. The weave coloration is infused throughout the core of the weave. The result is a beautiful, natural weathered weave material. All pieces of Banyan Bay are hand woven, strand by strand, by highly skilled artists. One chair can take more than a day to weave.

Banyan Bay can be ordered with only solid or textured fabrics. Patterned fabrics such as stripes and prints are not available on modular collections.

# BELVEDERE CUSHION

Designed by John Caldwell

Transitional design | Extra wide, multi-dimensional aluminum extrusion | High back cushion buckets add exceptional comfort  
Mesh sling seat for cushion add comfort and accelerate cushion drying | Cushions designed with a "kidney cushion" for lower back comfort  
Welts can be ordered in coordinating fabric | Available in all finishes





BELVEDERE CUSHION | DINING & SEATING



**Dining Chair**  
M29001  
27.5"W 32.5"D 42"H



**Swivel Tilt Dining Chair\***  
M29049  
27.5"W 32.5"D 42"H



**Lounge Chair**  
M29002  
29.5"W 33"D 39.5"H



**Ultra Swivel Tilt Lounge Chair\***  
M29020  
30"W 33"D 41.5"H



**Chaise Lounge with Skate Wheels**  
M29009  
30.5"W 84.5"D 50.5"H



**Double Chaise Lounge with Skate Wheels**  
M29069  
56.5"W 84.5"D 50.5"H



**Ottoman**  
M29008  
30"W 21.5"D 16.5"H



**Love Seat**  
M29022  
54.5"W 33"D 39.5"H



**Love Seat Glider\***  
M29021  
54.5"W 33"D 39.5"H



**Stationary Sofa**  
M29003  
79"W 33"D 39.5"H



**Sofa Glider\***  
M29031  
79"W 33"D 39.5"H

# BELVEDERE SLING

Designed by John Caldwell

- Transitional design | Extra wide, multi-dimensional aluminum extrusions
- | Available in high back and ultimate high back sling buckets
- | Seat buckets are ergonomically shaped for comfort | Available in all finishes



BELVEDERE SLING | DINING & SEATING



**High Back Dining Chair**  
M59001  
29"W 26.5"D 38.5"H



**Ultimate High Back Dining Chair**  
M59041  
26.5"W 30"D 44"H



**High Back Swivel Tilt Chair\***  
M59049  
26.5"W 28.5"D 39.5"H



**Ultimate High Back Swivel Tilt Chair\***  
M59059  
26.5"W 30.5"D 44"H



**Swivel Tilt Chat Chair\***  
M59079  
28.5"W 30.5"D 42"H



**Ottoman**  
M59008  
26"W 21.5"D 16"H



**Swivel Balcony Height Stool\***  
M59013B  
26.5"W 27"D 44"H



**Swivel Bar Stool\***  
M59013  
26.5"W 27"D 49.5"H



**Arm Stack Chaise with Skate Wheels**  
M59009  
30.5"W 79"D 43"H



**Armless Stack Chaise with Skate Wheels**  
M59029  
28.5"W 79"D 43"H

# COMPASS

Cushion and strap seating options available | Rustproof resort grade aluminum frames  
| Sunbrella® Suncloth straps available in two colors | Available in all finishes



# COMPASS | CUSHION & STRAP SEATING



**Chat Chair**  
M2012  
26.25"W 27"D 34.75"H



**Swivel Chat Chair\***  
M2079  
26"W 28"D 35.25"H



**Lounge Chair**  
M20002  
28.25"W 31.5"D 39.75"H



**Swivel Lounge\***  
M20020  
28.25"W 31.5"D 39.75"H



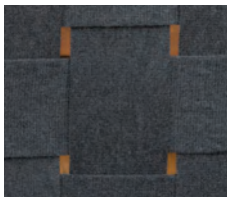
**Ottoman**  
M20008  
28"W 28"D 20.75"H



**Sofa**  
M20003  
77.5"W 31.5"D 39.75"H



**Love Seat**  
M20022  
53"W 31.75"D 40"H



## Sunbrella® Suncloth Strap

An innovative update to the look and feel of traditional strap furniture, Compass is constructed with revolutionary Suncloth Straps. Made with reinforced Sunbrella® yarns, Suncloth Straps are intentionally crafted to deliver both style and comfort with an elastomeric construction that gently adjusts to your position. In contrast to the stiffness of vinyl, which can crack and discolor, Suncloth Straps are soft, inviting and engineered to resist soil, abrasion and UV light.

# JASPER

Designed by John Caldwell

Transitional, rustic design | All-weather wicker | Rustproof resort grade aluminum frames  
| Optional seat pads available | Available in all finishes



# JASPER | WOVEN DINING & SEATING



**Lounge Chair**  
M81002-J  
32"W 30"D 33¼"H



**Swivel Lounge Chair\***  
M81020-J  
30"W 31.5"D 33¼"H



**Spa Lounge Chair**  
M81007 -J  
28.5"W 24"D 27.75"H



**Arm Dining Chair**  
M81001-J  
26"W 28.5"D 35.5"H



**Swivel Arm Dining Chair\***  
M81049-J  
26"W 28.25"D 35.5"H



**Arm Bar Stool**  
M81014-J  
26"W 28.5"D 45.75"H



**Drum Stool/Side Table**  
M81086-J  
18"W 18"D 18"H



**Ottoman**  
M81008-J  
24.25"W 21.5"D 15.5"H



**Sofa**  
M81003-J  
86"W 30"D 33.25"H



**Loveseat**  
M81022 -J  
59.25"W 30"D 33.25"H



**Chaise**  
M81009-J  
34"W 82.5"D 45.75"H

## Seat Pads Available

Designed to maintain the slim profile and clean lines of the Jasper collection, these low-profile pads add just the right amount of additional support. Available with or without back cushion for customizable comfort.



## Beechwood Weave

The Jasper weave has a sophisticated, delicate look combined with sturdy construction. All-weather wicker with a textural, multi-color finish in an aged beechwood tone is woven in a breathable open pattern for the airy look of classic cane or rattan without the worry of cracks and fading. The aluminum extrusion frames and angled silhouette give Jasper modern appeal with timeless detail.

## KEY WEST PADDED SLING

Transitional design | Created from heavy-walled octagonal aluminum extrusions  
Nylon foot glides protect furniture and floor surface | Sling rail extrusion with ergonomic design  
Sling rail nylon end caps are color matched to frame color | Available in all finishes





KEY WEST PADDED SLING | SEATING & DINING



**Ultimate High Back Dining Chair**  
M8041PS  
25½"W 29"D 44"H  
Also Available:  
**High Back Dining Chair**  
M8001PS  
25½"W 30"D 38"H



**Adjustable Chair\***  
M8017PS  
25½"W 40½"D 38"H



**Swivel Bar Stool\***  
M8013PS  
25½"W 31½"D 48¼"H



**Ottoman**  
HQ8008PS  
23"W 22"D 17"H



**Swivel Tilt Chat Chair\***  
M8079PS  
27"W 30"D 40½"H



**Ultimate High Back Swivel Tilt Chair\***  
M8059PS  
25½"W 30"D 43½"H  
Also Available:  
**High Back Swivel Tilt Chair\***  
M8049PS  
25½"W 30½"D 37½"H



**High Back Chair Glider\***  
M8011PS  
25½"W 30½"D 38"H  
Also Available:  
**Love Seat Glider\***  
M8021PS  
46"W 31½"D 37½"H



**Stackable Chaise**  
M7229PS  
27½"W 82½"D 41"H  
Also Available:  
**Chaise**  
M8009PS  
27"W 71½"D 34½"H

## KEY WEST SLING

- Transitional design | Created from heavy-walled octagonal aluminum extrusions
- Nylon foot glides protect furniture and floor surface | Sling rail extrusion with ergonomic design
- Sling rail nylon end caps are color matched to frame color | Available in all finishes



KEY WEST SLING | SEATING & DINING



**High Back Dining Chair**  
M8001R  
25.5"W 30"D 38"H



**Ultimate High Back Dining Chair**  
M8041  
25.5"W 29"D 44"H



**Ultimate High Back Swivel Tilt Chair\***  
M8059  
25.5"W 30"D 43.5"H



**High Back Swivel Tilt Chair\***  
M8049R  
25.5"W 30.5"D 37.5"H



**High Back Chair Glider\***  
M8011R  
25.5"W 30.5"D 38"H



**Adjustable Chair\***  
M8017  
25.5"W 40.5"D 38"H



**Ottoman**  
M8008  
23"W 22"D 17"H



**Swivel Bar Stool\***  
M8013R  
25.5"W 31.5"D 48.25"H



**Love Seat Glider\***  
M8021  
46"W 31.5"D 37.5"H



**Stackable Chaise Lounge**  
M7229R  
27.25"W 82.5"D 41"H



**Chaise Lounge**  
M8009  
27"W 71.5"D 34.5"H



## MANOR DEEP SEATING

Designed by John Caldwell

Transitional design | Created from cast and extruded aluminum materials | Fabric mesh seating substructure for comfort and cushion venting  
| Ergonomically shaped back frame for added comfort | Ultra high back design for relaxing comfort  
| Nylon foot glides protect furniture and floor surface | Available in all finishes

# MANOR DEEP SEATING | CUSHIONED SEATING



**Ultra Swivel Tilt Lounge Chair\***  
M42020  
30"W 36.5"D 42.5"H



**Ultra Lounge**  
M42002  
30"W 36.5"D 42.5"H



**Ultra Love Seat**  
M42022  
56"W 36.5"D 42.5"H



**Ottoman**  
M42008  
30"W 27"D 17.25"H



**Ultra Sofa**  
M42003  
82"W 36.5"D 42.5"H



**Chaise Lounge**  
M42009  
30"W 83.25"D 43.5"H



## COORDINATES WITH MARSEILLE DINING

The Marseille and Manor collections share a classic aesthetic with modern material updates to allow for seamless coordination and multiple configurations. From the shared arm detail to the overall construction and design, these two collections were made for each other.

# MARSEILLE (MANOR COLLECTION)

Designed by John Caldwell

- | Transitional design | Created from cast and extruded aluminum materials
- | Generously proportioned seat bucket design | Nylon foot glides protect furniture and floor surface
- | Ergonomically formed seat and back for enhanced comfort | Available in all finishes



# MARSEILLE | CAST/EXTRUDED ALUMINUM DINING



**Dining Chair**  
M43001  
25.5"W 25.5"D 34.5"H



**Bench**  
M43023  
45"W 25.5"D 34.5"H



**Swivel Tilt Dining Chair\***  
M43049  
25.5"W 25.5"D 34.5"H



**Swivel Balcony Height Stool\***  
M43013B  
25.5"W 26"D 38.5"H



**Swivel Bar Stool\***  
M43013  
25.5"W 27.5"D 43.5"H



## CAST ALUMINUM

Cast aluminum is heavier than extruded aluminum but lighter and more durable than traditional wrought iron pieces making it the perfect choice for those who appreciate a classic aesthetic with sturdy construction and very little maintenance. The ornately interlaced patterns, light textural feel and rich powder-coat finish of Marseille are exemplary of the attention to detail and superb craftsmanship behind this collection.

## COORDINATES WITH MANOR DEEP SEATING

The Marseille and Manor collections share a classic aesthetic with modern material updates to allow for seamless coordination and multiple configurations. From the shared arm detail to the overall construction and design, these two collections were made for each other.





## PALAZZO CUSHION

Designed by John Caldwell

Transitional design | Created from heavy-walled rectangular aluminum extrusion | Solid aluminum side frame design element  
| Cushion tailoring includes button and welt | Button and welt can be made with coordinating fabric  
| Vinyl strap cushion seat substructure | Available in all finishes





**High Back Dining Chair**  
M23001  
26.5"W 34"D 43"H



**High Back Swivel Tilt Chair\***  
M23049  
26.5"W 34"D 43"H



**Spring Base Lounge Rocker\***  
M23019  
28.5"W 34.5"D 36"H



**Ottoman**  
M23008  
28"W 25"D 18.5"H



**Swivel Balcony Height Stool\***  
M23013B  
26"W 32.5"D 48.5"H



**Swivel Barstool\***  
M23013  
26"W 32.5"D 53"H



**Ultra Swivel Tilt Lounge Chair\***  
M23020  
28"W 34.75"D 42.5"H



**Lounge Chair Glider\***  
M23011  
28"W 35"D 36"H



**Lounge Swivel Rocker\***  
M23018  
28.5"W 34.5"D 36"H



**Love Seat Glider\***  
M23021  
52.5"W 35"D 36"H



**Chaise Lounge**  
M23009R  
27"W 72"D 36"H



**Sofa Glider\***  
M23031  
77"W 35"D 36"H



**Stationary Sofa**  
M23003  
77"W 35"D 36"H

# PALAZZO SLING

- Transitional design | Created from heavy-walled rectangular aluminum extrusion
- Solid cast aluminum side frame and arm detail design element | Ergonomically formed sling bucket - available in two heights
- Sling rail nylon end caps are color matched to frame color | Available in all finishes



PALAZZO SLING | DINING & SEATING



**High Back Dining Chair**  
M4301R  
24.5"W 30.5"D 38"H



**Ultimate High Back Dining Chair**  
M4341  
24.5"W 30.5"D 44"H



**Ultimate High Back Swivel Tilt Chair\***  
M4359  
24.5"W 29.5"D 43.5"H



**High Back Swivel Tilt Chair\***  
M4349R  
24.5"W 29.5"D 37.5"H



**Adjustable Chair\***  
M4617  
24.5"W 42.5"D 36.5"H



**Ottoman**  
M4608  
24.5"W 21"D 18"H



**Swivel Bar Stool\***  
M4693  
22.25"W 27"D 44.75"H



**Swivel Balcony Height Stool\***  
M4693B  
22.25"W 27"D 39.75"H



**Swivel Bar Stool\***  
M4313  
24.5"W 30.5"D 46.5"H



**Swivel Balcony Height Stool\***  
M4313B  
24.5"W 30.5"D 42"H



**Love Seat Glider\***  
M4321  
45"W 30"D 38"H



**Chaise Lounge**  
M4309  
26"W 71"D 35.5"H

# SAVOY CUSHION

Designed by John Caldwell

- | Transitional design
- | All extruded frame
- | Multi-dimensional extrusion
- | Cushions can be ordered with a coordinating button and welt fabric
- | Nylon foot glides protect furniture and floor surface
- | Vinyl strap cushion seat substructure
- | Available in all finishes



SAVOY CUSHION | CUSHIONED DINING & SEATING



**Lounge Chair**  
M24002  
29"W 36"D 40"H



**Boat Shape Ottoman**  
M24058  
30.5"W 42.5"D 19.5"H



**Ultra Swivel Tilt Lounge Chair\***  
M24020  
29"W 36"D 42.5"H



**Ottoman**  
M24008  
30"W 25.5"D 19"H



**Dining Chair**  
M24001  
27"W 31"D 41"H



**Chaise Lounge**  
M24009  
33"W 75.25"D 46.5"H



**Swivel Tilt Dining Chair\***  
M24049  
27"W 31"D 41"H



**Love Seat**  
M24022  
54"W 36"D 40"H  
Also Available:  
**Love Seat Glider\***  
M24021



**Sofa**  
M24003  
77.5"W 36"D 40"H  
Also Available:  
**Sofa Glider\***  
M24031



**Crescent Love Seat**  
M24052  
61"W 35"D 41.5"H



**Crescent Sofa**  
M24053  
90"W 39.5"D 41.5"H

# SAVOY SLING

Designed by John Caldwell

- Transitional design | All extruded frame | Multi-dimensional extrusion
- | "Center seat" bracing on dining chair eliminates lower leg bracing | Nylon foot glides protect furniture and floor surface
- | Sling rail extrusion with ergonomic design | Sling rail nylon end caps are color matched to frame color | Available in all finishes



# SAVOY SLING | DINING & SEATING



**High Back Dining Chair**  
M54001  
25.75"W 30.75"D 38"H



**Ultimate High Back Dining Chair**  
M54041  
25.75"W 30.75"D 42.75"H



**Ottoman**  
M54008  
25.75"W 24.25"D 16.25"H



**Ultimate High Back Swivel Tilt Chair\***  
M54059  
25.75"W 30.5"D 42.75"H



**High Back Swivel Tilt Chair\***  
M54049  
25.75"W 30.5"D 38"H



**Swivel Tilt Chat Chair\***  
M54079  
28"W 31"D 40.5"H



**Bar Stool\***  
M54013  
25.75"W 30.5"D 47.25"H



**Balcony Height Stool\***  
M54013B  
25.75"W 30.5"D 42.25"H



**Chaise Lounge**  
M54009  
27.5"W 70.5"D 43.25"H

## SEAGROVE II SLING

- Transitional design | Created from heavy-walled multi-dimensional aluminum extrusions
- Nylon foot glides protect furniture and floor surface | Ergonomically formed sling bucket - available in two heights
- Sling rail nylon end caps are color matched to frame color | Available in all finishes





SEAGROVE II SLING | DINING & SEATING



**Stackable High Back Dining Chair\***  
M62001  
26"W 30"D 38"H



**Stackable Ultimate High Back Dining Chair\***  
M62041  
26"W 30"D 43"H



**High Back Swivel Tilt Chair\***  
M62049  
25"W 29.5"D 38.5"H



**Ultimate High Back Swivel Tilt Chair\***  
M62059  
25"W 29.5"D 43.5"H



**Love Seat Glider\***  
M62021  
45.5"W 30"D 34"H



**Adjustable Chair\***  
M62017  
25"W 40.5"D 39"H



**Chaise Lounge**  
M7229R  
27.5"W 82.5"D 41"H



**Ottoman\***  
M62008  
25"W 21"D 17.5"H

# SOUTHERN CAY CUSHION

Designed by John Caldwell

Contemporary design | Created from heavy-walled elliptical aluminum extrusions | Ergonomic shaped back frame for added comfort  
| Vinyl strap cushion seat substructure | Nylon foot glides protect furniture and floor surface | Available in all finishes



SOUTHERN CAY CUSHION | DINING & SEATING



**Stationary Lounge**  
M36002  
30.5"W 32.5"D 35.5"H



**Lounge Swivel Rocker\***  
M36018  
30.75"W 31.25"D 36"H



**Ottoman**  
M36008  
28"W 23.5"D 18"H



**Sofa**  
M36003  
78.5"W 32.5"D 35.5"H



**Love Seat**  
M36022  
54.5"W 32.5"D 35.5"H



**Dining Chair**  
M36001  
27.5"W 32.5"D 37"H



**Chaise Lounge**  
M36009  
29.5"W 85.5"D 51"H



**Swivel Tilt Dining Chair\***  
M36049  
27.5"W 29.5"D 37"H



## SOUTHERN CAY MODULAR

Designed by John Caldwell

- Contemporary design | Created from heavy-walled elliptical aluminum extrusions
- Ergonomic shaped back cushion for added comfort | Aluminum strap cushion seat substructure
- Nylon foot glides protect furniture and floor surface | All modular pieces are held together with specially designed "U" clip
- Available in all finishes

SOUTHERN CAY MODULAR | SECTIONAL SEATING



**Single Unit**  
M35002  
35"W 35"D 28"H 16"SH



**Lounge Chair**  
M35004  
35"W 33"D 28"H 16"SH



**Circular Corner Unit**  
M35033  
35"W 35"D 28"H 16"SH



**Square Corner Unit**  
M35032  
35"W 35"D 28"H 16"SH



**Double Unit**  
M35022  
35"W 70"D 28"H 16"SH



**Square Ottoman**  
M35008  
35"W 35"D 16"H 16"SH



**Circular Ottoman**  
M35038  
35"W 35"D 16"H 16"SH



**Coffee Table**  
M35007  
Stamped Aluminum Top  
35"W 35"D 14.5"H



**Occasional Table**  
M35006  
Stamped Aluminum Top  
21"W 21"D 19"H



Combine four M35038  
Circular Ottomans to  
create a round bed



Combine two Circular  
Corner Units and two  
Circular Ottomans to create  
a circular chaise bed

Southern Cay Modular can only be ordered with solid or textured fabrics. Patterned fabrics such as stripes and prints are not available on modular collections.

Design Patents D698,170; D698,169; D698,174; D698,173

# SOUTHERN CAY SLING

Designed by John Caldwell

Contemporary design | Created from heavy-walled elliptical aluminum extrusions

| Nylon foot glides protect furniture and floor surface

| Sling rail extrusion with ergonomic design | Available in all finishes



SOUTHERN CAY SLING | DINING & SEATING



**Nesting Dining Chair**  
M66001  
24.5"W 28.25"D 34"H



**Swivel Tilt Dining Chair\***  
M66049  
27.5"W 28.25"D 34.25"H



**Ottoman**  
M66008  
25.25"W 21.5"D 17.5"H



**Stationary Balcony Height Stool**  
M66014B  
27.5"W 27.5"D 39.75"H



**Stationary Bar Stool**  
M66014  
27.5"W 27.5"D 45.5"H



**Stacking Sand Chair**  
M66006  
27.25"W 30"D 26.25"H



**Stacking Chaise Lounge without Arms**  
M66009  
26.5"W 80"D 44.25"H



**Chaise Lounge**  
M66009A  
29.5"W 80"D 44.25"H



## SOUTHERN CAY WOVEN

Designed by John Caldwell

Contemporary design | Created from heavy-walled elliptical aluminum extrusions  
| Nylon foot glides protect furniture and floor surface | Woven buckets available in high back and ultimate high back  
| Available in all finishes





**High Back Dining Chair**  
M76001  
27.5"W 26.5"D 35.5"H



**High Back Swivel Tilt Chair\***  
M76049  
27.5"W 26.5"D 36"H



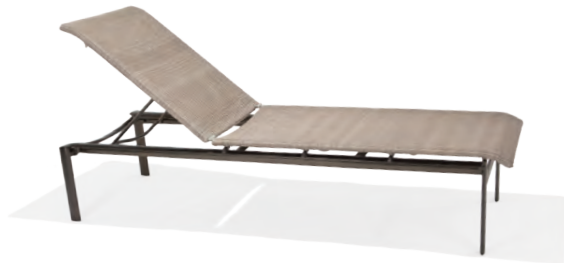
**Ottoman**  
M76008  
25.5"W 22"D 17"H



**Stationary Balcony Height Stool**  
M76014B  
27.5"W 26.5"D 41.5"H



**Stationary Bar Stool**  
M76014  
27.5"W 26.5"D 46.5"H



**Armless Stack Chaise**  
M76009  
26.5"W 80"D 44"H



**Chaise Lounge**  
M76009A  
29.5"W 80"D 44"H



**Oyster Weave**

Having the look and feel of real rattan, this proprietary weave creation was the result of dedicated time and effort. The material itself is a mix of polyethylene and UV inhibitors with no acrylic additives. Both the texture and coloration are achieved from the hands of an extrusion artist who intuitively adds the correct amount of pigment to the weave during precise temperature intervals in the production process. The weave coloration is infused throughout the core of the weave. The result is a beautiful, natural weathered weave material. All pieces of Banyan Bay are hand woven, strand by strand, by highly skilled artists. One chair can take more than a day to weave.



## VENETO CUSHION

Designed by John Caldwell

Traditional design | All extruded frame | Multi-dimensional extrusion | Cushions can be ordered with a coordinating button and welt fabric  
| Nylon foot glides protect furniture and floor surface | Vinyl strap cushion seat substructure | Available in all finishes

VENETO CUSHION | CUSHIONED DINING & SEATING



**High Back Dining Chair**  
M25001  
25.5"W 30.5"D 41"H



**High Back Swivel Tilt Dining Chair\***  
M25049  
25.5"W 30.5"D 41"H



**Lounge Chair**  
M25002  
28"W 35"D 40"H



**Ultra Swivel Tilt Lounge Chair\***  
M25020  
28"W 35"D 42.5"H



**Boat Shape Ottoman**  
M25058  
30.5"W 42.5"D 19"H



**Chaise Lounge**  
M25009  
32"W 75"D 46"H



**Ottoman**  
M25008  
27.5"W 25.5"D 19.5"H



**Love Seat**  
M25022  
52"W 35"D 40"H  
Also Available:  
**Love Seat Glider\***  
M25021



**Sofa**  
M25003  
76.75"W 35"D 40"H  
Also Available:  
**Sofa Glider\***  
M25031



**Crescent Love Seat**  
M25052  
59.5"W 35"D 41.5"H



**Crescent Sofa**  
M25053  
88"W 39.5"D 41.5"H

# VENETO SLING

Designed by John Caldwell

Transitional design | All extruded frame | Multi-dimensional extrusion | Nylon foot glides protect furniture and floor surface  
| Sling rail nylon end caps are color matched to frame color | Slim-line sling rail extrusion with ergonomic design | Available in all finishes



VENETO SLING | DINING & SEATING



**High Back Dining Chair**  
M55001  
24.5"W 29.75"D 38"H



**Ultimate High Back Dining Chair**  
M55041  
24.5"W 29.75"D 43.5"H



**High Back Swivel Tilt Chair\***  
M55049  
24.5"W 29.75"D 38"H



**Swivel Tilt Chat Chair\***  
M55079  
26.5"W 30.25"D 40.5"H



**Ultimate High Back Swivel Tilt Chair\***  
M55059  
24.5"W 29.75"D 42.75"H



**Ottoman**  
M55008  
24.25"W 21.75"D 16.25"H



**Swivel Bar Stool\***  
M55013  
24.5"W 29.75"D 47.75"H



**Swivel Balcony Height Stool\***  
M55013B  
24.25"W 29.75"D 43"H



**Chaise Lounge**  
M55009  
29"W 82"D 42.5"H

# EXTRUDED ALUMINUM SLAT TOPS

Transitional design | Constructed from light weight extruded aluminum | Available in all finishes

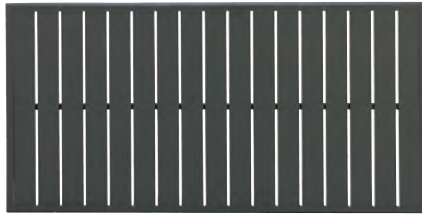


# EXTRUDED ALUMINUM SLAT TOPS

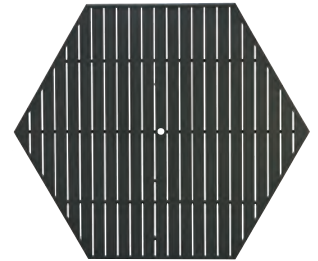
Crafted using extruded aluminum for a lighter weight, yet durable top that blends easily with many styles.  
Designed to coordinate with and accommodate various seating arrangements. Available in all finishes.



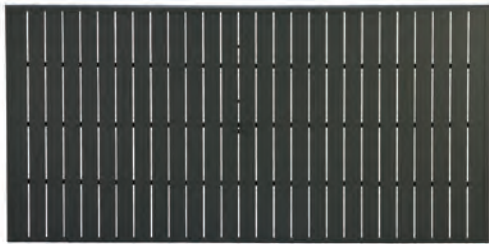
**23.5" Round Top**  
MESL-024  
**24" Square Top**  
MESL-S24



**27" x 54" Rectangular Cocktail/Dining Top**  
MESL-052  
Top fits bases M9307B and M9907B and  
Balcony Bases M9352B and M9352BB

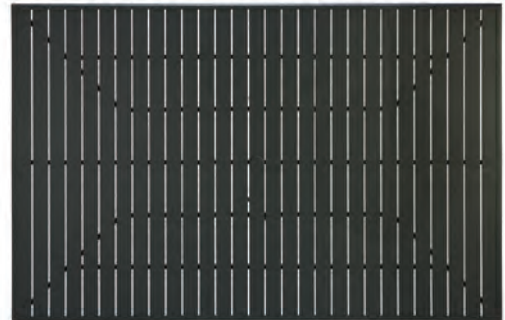


**64" Hexagonal Dining Top with Hole**  
MESL-H64

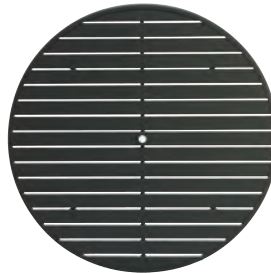


**42" x 85" Rectangular Dining Top with Hole**  
MESL-084

**42" x 73" Rectangular Dining Top with Hole**  
MESL-073



**60" x 91" Rectangular Dining Top with Hole**  
MESL-090



**54" Round Top with Hole**  
MESL-054

**42" Round Top with Hole**  
MESL-R42

**42" Square Top with Hole**  
MESL-S42

**48" Round Top with Hole**  
MESL-048

## NOTE THAT TOPS AND BASES ARE SOLD SEPARATELY.

Dining table bases are "KD" (knock down - assembly required). On "KD" table bases the cast aluminum bracket attaches the legs to the inner ring.  
Easy to follow instructions for assembly are included with each table base.

# TRADITIONAL CAST ALUMINUM TOPS

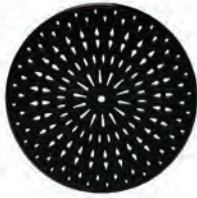
Traditional design | Coordinates with multiple styles and designs | Constructed of heavy duty cast aluminum | Available in all finishes



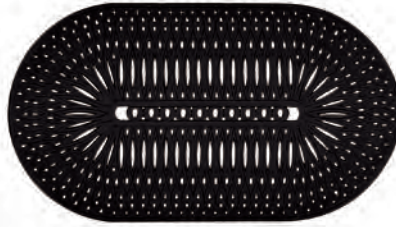


## TRADITIONAL CAST ALUMINUM TOPS

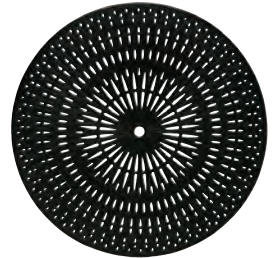
Sturdy cast construction that is heavier than extruded aluminum with durability to surpass traditional wrought iron. Designed to coordinate with and accommodate various seating styles and configurations. Available in all finishes.



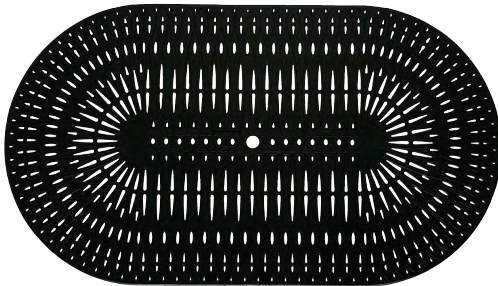
24" Round Cast Top  
MCAS-024  
36" Round Cast Top  
MCAS-036



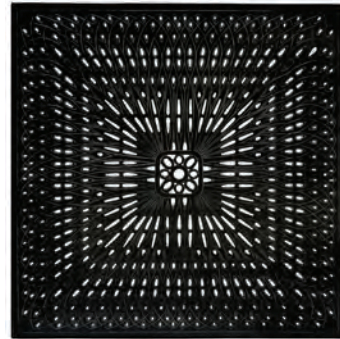
30" x 52" Oval Cast Cocktail/Dining Top  
MCAS-052  
Top fits bases M9307B and M9907B and Balcony  
Height Bases M9352B and M9352BB



54" Round Cast Top with Hole  
MCAS-054  
42" Round Cast Top with Hole  
MCAS-042



48" x 84" Oval Cast Dining Top with Hole  
MCAS-084



64" Square Cast Dining Top with Hole  
MCAS-064

## SOLID SURFACE STAMPED ALUMINUM TOPS

Simple elegant design coordinates with various seating styles and configurations. Available in all finishes.



24" Round RoundTop  
MSOL-24



44" x 84" Oval Top with Hole  
MSOL-84

**NOTE THAT TOPS AND BASES ARE SOLD SEPARATELY.**

Dining table bases are "KD" (knock down - assembly required). On "KD" table bases the cast aluminum bracket attaches the legs to the inner ring. Easy to follow instructions for assembly are included with each table base.

# TABLE BASES FOR ALTERNATIVE TOPS | 9900 SERIES

These table bases fit any relative size alternative top.  
Available in all finishes.



**27" x 52" Rectangular Cocktail Table**  
M9907B  
Any -052 Top



**24" Round Occasional Table**  
M9924B  
Any -024, -S24 or -022 Top



**42" Round Dining Table**  
M9942B  
Any -036, -042 or -043 Top



**42" Round Bar Table**  
M9942BH  
Any -036, -042 or -043 Top



**54" Round Low Cocktail Table**  
M9954BL  
Any -054, -055 or -060 Top, and  
MESL-H64 Top  
Note: This base does not fit MCAS-064 Top.  
See bases M9964B, M9964BB  
**42" Round Low Cocktail Table**  
M9942BL  
Any -036, -042 or -043 Top



**64" Square Dining Table**  
M9964B  
MCAS-064 Top  
**64" Square Balcony Height Table**  
M9964BB  
MCAS-064 Top  
Note: These bases do not fit the  
MESL-H64 Hexagon Top.  
See bases M9954B, M9954BB,  
M9954BL



**42" Round Balcony Height Table**  
M9942BB  
Any -036, -042 or -043 Top  
**54" Round Balcony Height Table**  
M9954BB  
Any -054, -055 or -060 Top, and  
MESL-H64 Top  
Note: This base does not fit  
MCAS-064 Top.  
See bases M9964B, M9964BB



**54" Round Dining Table**  
M9954B  
Any -054, -055, -060 Top, and  
MESL-H64 Top  
Note: This base does not fit  
MCAS-064 Top.  
See bases M9964B, M9964BB



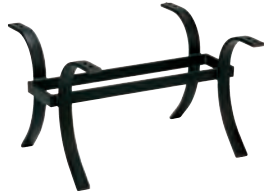
**60" x 91" Rectangular Dining Table**  
M9990B  
Any -090 Top



**84" Oval Dining Table**  
M9984B  
Any -084 or -088 Top  
**42" x 73" Rectangular Dining Table**  
M9973B  
Any -073 Top

# TABLE BASES FOR ALTERNATIVE TOPS | 9300 SERIES

These table bases fit any relative size alternative top.  
Available in all finishes.



**27" x 52" Rectangular Cocktail Table**  
M9307B  
Any -052 Top



**24" Round Lamp Table**  
M9328B  
Any -024, -S24 or -022 Top



**52" Rectangular Dining Table**  
M9352B  
Any -052 Top



**42" Round Bar Table**  
M9342BH  
Any -036, -042 or -043 Top



**42" Round Balcony Height Table**  
M9342BB  
Any -036, -042 or -043 Top



**52" Rectangular Balcony Height Dining Table**  
M9352BB  
Any -052 Top



**42" Round Low Cocktail Table**  
M9342BL  
Any -036, -042 or -043 Top  
**54" Round Low Cocktail Table**  
M9354BL  
Any -054, -055, -060 Top, and  
MESL-H64 Top Note: This base does  
not fit MCAS-064 Top.  
See bases M9364B, M9364BB

**54" Round Balcony Height Table**  
M9354BB  
Any -054, -055, -060 Top, and  
MESL-H64 Top  
Note: This base does not fit  
MCAS-064 Top.  
See bases M9364B, M9364BB



**54" Round Dining Table**  
M9354B  
Any -054, -055, -060 Top, and  
MESL-H64 Top  
Note: This base does not fit the  
MCAS-064 Top.  
See bases M9364B, M9364BB



**64" Square Dining Table**  
M9364B  
MCAS-064 Top  
**64" Square Balcony Height Table**  
M9364BB  
MCAS-064 Top  
Note: These bases do not fit the  
MESL-H64 Hexagon Top.  
See bases M9354B, M9354BB,  
M9354BL



**60" x 91" Rectangular Dining Table**  
M9390B  
Any -090 Top



**84" Oval Dining Table**  
M9384B  
Any -084 or -088 Top  
**42" x 73" Rectangular Dining Table**  
M9373B  
Any -073 Top

**42" Round Dining Table**  
M9342B  
Any -036, -042 or -043 Top  
**48" Round Dining Table**  
M9348B  
Any -048 Top

# SOLID TOP TABLES

Rustproof resort grade aluminum frames and table tops | Flush edged design for the ability to gang multiple tables seamlessly | Available in all finishes



WINSTON®

## OBSCURE GLASS TOP TABLES

NOT FOR CONTRACT USE



**54" Round Dining Table\***

M8154RGU

54"W x 54"D x 38"H

**48" Round Dining Table\***

M8148RGU

48"W x 48"D x 28"H



**Occasional Table\***

M9207G

18.75"W x 18.75"D x 17.5"H



**Occasional Table\***

M8324G

24.5"W x 24.5"D x 18"H



**42" x 84" Oval Dining Table\***

M8184RGU

42"W x 84"D x 28"H

**42" x 76" Oval Dining Table\***

M8176RGU

42"W x 76"D x 28"H

## STAMPED ALUMINUM TABLES

Winston Aluminum Stamped tops are created from 3/16" solid aluminum. The geometric pattern of circles give these tables design simplicity and sophistication. Available in all finishes.



**18" Round Side Table  
with Stamped Top**

M1018-ST

18"W, 18"D, 19"H



**42" Dining/Umbrella Table  
with Stamped Top**

M1042-ST

42"W, 42"D, 28"H

**48" Dining/Umbrella Table  
with Stamped Top**

M1048-ST

48"W, 48"D, 28"H

## SOLID TOP TABLES

Designed to accentuate a full spectrum of styles, Winston Solid Top Tables are developed with clean lines, sensible proportions, and durable materials. Available in all finishes.



**44" Square Dining Table**

M20044DT

44"W 44"D 29.5"H



**44" x 73" Rectangle Dining Table**

M20074DT

73"W 44"D 29.5"H



**27" x 54" Coffee Table**

M20067

54"W 27"D 18.5"H



**24" Square Side Table**

M20006

24"W 24"D 24"H



**44" Square Chat Table**

M20044CT

44"W 44"D 29.5"H



**44" Square Bar Table**

M20044BH

44"W 44"D 39.25"H

# FRAME FINISHES

What makes Winston's frame finishes so durable and long-lasting has more to do with what we do to prepare the frames than the end results. A superior finish begins with the preparation of the surface area. It begins with cleaning the aluminum frames. The "Primer System" Winston utilizes is a 7-step process that takes approximately 45 minutes to complete per frame.

First, each frame receives an alkaline bath that degreases and etches the frame. Two clean water rinses follow to remove the alkaline residue as well as any etched particles. Next a chrome phosphate conversion coating is applied that seals the frame and prevents the formation of corrosion. This step is followed by two additional clean water rinses in preparation for the final stage. During the final stage each frame is "deionized" which removes any mineral deposits that might be left from any of the prior stages. This step also provides a greater bonding surface of the aluminum for optimal adhesion of the powder paint. Winston's paint finishes begin as a very fine, electrostatic polyester powder that is sprayed onto the frame. The powder is "charged" so that the powder attaches to the frame much like metal to a magnet. This provides complete and even coverage of the powder. Once covered with the powder, the frames enter a large oven area whereby the frames are heated to a very high temperature which melts the powder. The oven process takes approximately 30 minutes to complete resulting in a durable, baked on finish.



**BKN Night**



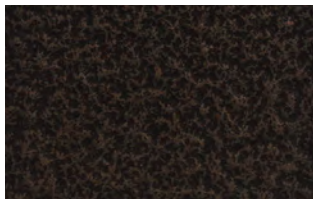
**TPW Textured Pewter**



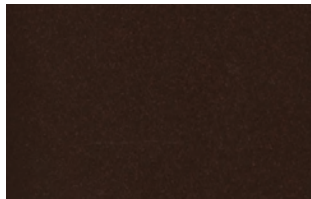
**JAV Java**



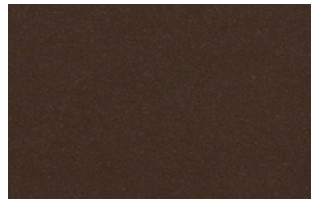
**BIS Antique Bisque**



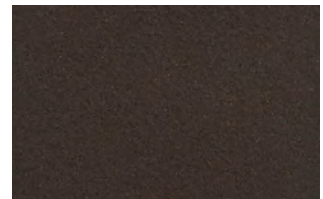
**N7 Patina**



**ESP Espresso**



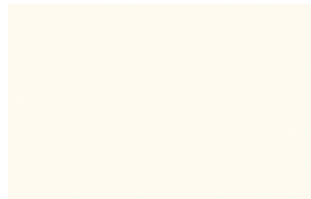
**OLY Olympic Gold**



**BRZ Bronze**



**DRF Driftwood**



**SWH Smooth White**



**N4 Antigua**

**SEPTEMBER 2019**

Winston Furniture Company reserves the right to modify, add, or discontinue products, finishes or fabrics without notice. Printed images are not a guarantee of color accuracy. All images, copy, and content are the property of Winston Furniture Company and cannot be reproduced without permission.

WINSTON<sup>®</sup>  
FURNITURE COMPANY  
—— est. 1975 ——

LOUISVILLE, KY | HALEYVILLE, AL