

MADE IN ITALY. MADE TO EXCEL.

# BOOST



Since its founding in 1891, Acme Brick has continually advanced the art and science of providing affordable, sustainable, enduring, and beautiful product choices for America's homeowners, builders, contractors, institutions, and businesses.

Acme Brick Tile & Stone traces its roots back to 1964 and is a leader in providing builders, architects, designers, and contractors with a wide range of excellent products. At more than 50 locations across 13 states, Acme Brick Tile & Stone, offers distinctive products of superior quality, sourced from around the world and delivered with impeccable service – and at many locations, in-house design assistance. Our customers include builders, architects, designers, contractors, and DIY homeowners.

In ways large and small, Acme Brick associates work hard to provide building materials that are as good for the environment as it is for the people who build with it.

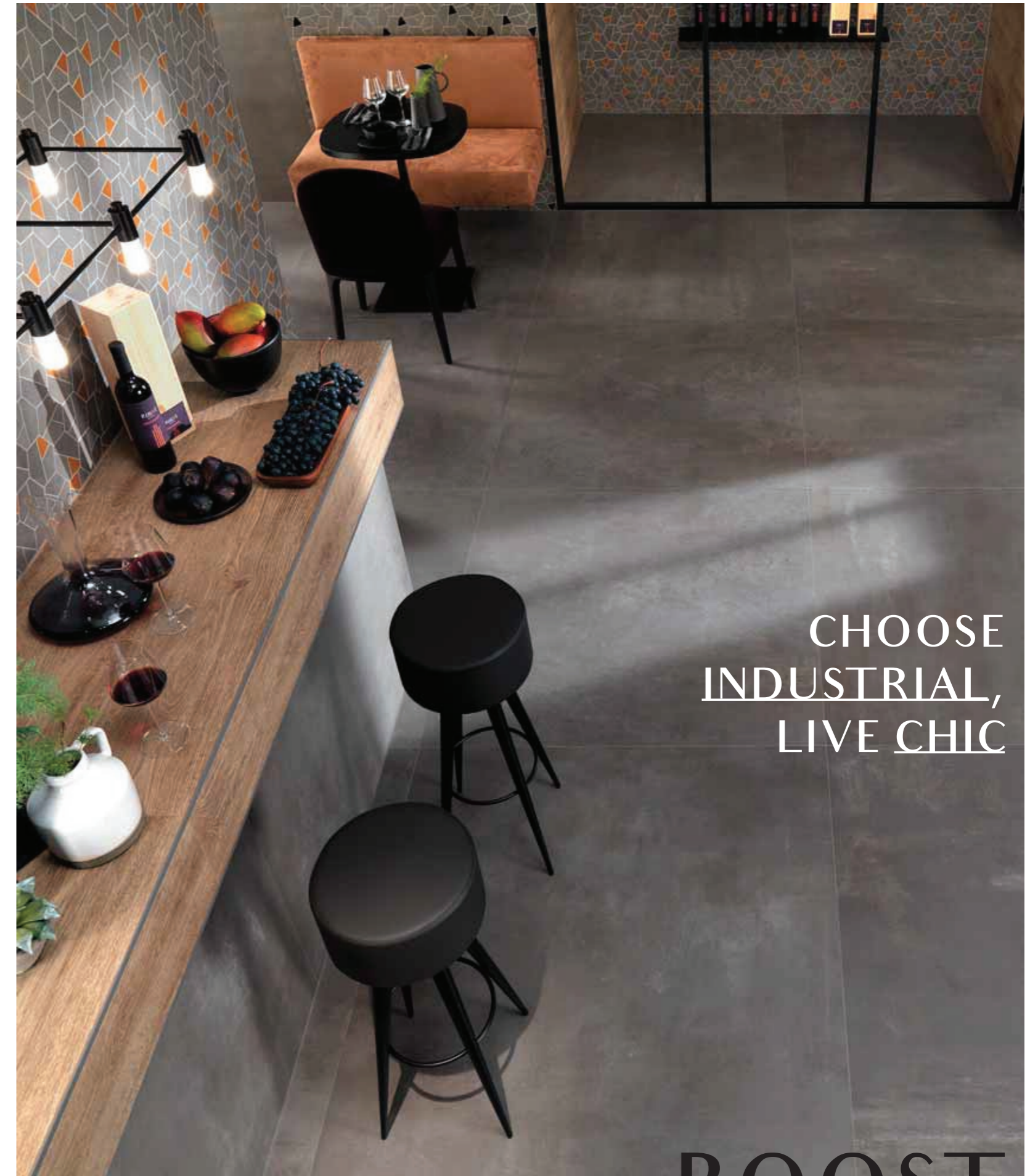


[WWW.BRICK.COM](http://WWW.BRICK.COM)

CONCRETE LOOK

COLOURED BODY  
PORCELAIN TILES

WHITE-BODY  
WALL TILES



CHOOSE  
INDUSTRIAL,  
LIVE CHIC

**BOOST**

CONCRETE LOOK PORCELAIN AND WALL TILES COLLECTION



## AN IMPULSE OF INDUSTRIAL CHIC

In a modern metropolitan space, a surface with a troweled concrete effect becomes the perfect background to show off your idea of interior design. To create environments that reflect the character of those who live there.



UNDERSTATEMENT  
AS AN  
ATTITUDE,  
PERSONALITY  
AS A  
CHOICE

The warm shades of oxidation coexist with the cooler hues typical of concrete, in a surface that stands out for its decisive identity.





With their troweled concrete effect and soft touch, the wall tiles are energized by colors that brighten up the rigor of metropolitan style, creating beautiful spaces to live in.





THE LARGE RECTIFIED TILES MEASURING 160x320, 120x278, 120x120 CM HAVE DIFFERENT PATTERNS TO ENSURE GRAPHIC VARIABILITY AND ARE IDEAL FOR USE IN ARCHITECTURAL SPACES OF ALL DIMENSIONS. LARGE NON-RECTIFIED SLABS MEASURING 162x324 CM ARE PERFECT FOR KITCHEN COUNTERTOPS, TABLES, FURNISHINGS, AND BACKSPASHES.

## INNOVATION AND DESIGN, TOGETHER

Technical performance and beauty coexist without compromise in large slabs that achieve new levels of excellence. The industrial concrete effect fills the space with a single continuous material, lending itself to multiple uses like floors, walls, and furnishing elements.



Thanks to the Italian touch and attention to detail, the collection surpasses the minimalism of industrial style to become the centerpiece of original environments with a strong identity.





INSIDE  
AND OUT,  
ALWAYS  
WITH STYLE

The concrete effect opens up multiple avenues for design possibilities. Its versatility, thanks also to the anti-slip 120x120 cm format and to the 20 mm thickness specific for exteriors, allows for a total look with a powerful visual impact.





# PERFECTLY CONCRETE

The decisive character of the concrete effect and the neutral tones of its palette merge in a balanced space, that gives a voice to the different personalities of those who live there.



## PORCELAIN TILES

Boost Pearl  
Matte 75x150 cm | 29 1/2"x59"

Boost White  
Matte 75x150 cm | 29 1/2"x59"

Boost Pearl Mosaico Shapes  
31x33,5 cm | 12 1/4"x13 1/4"

AtlasPlan Calacatta Royal  
Silk 162x324 cm | 63 3/4"x127 1/2"

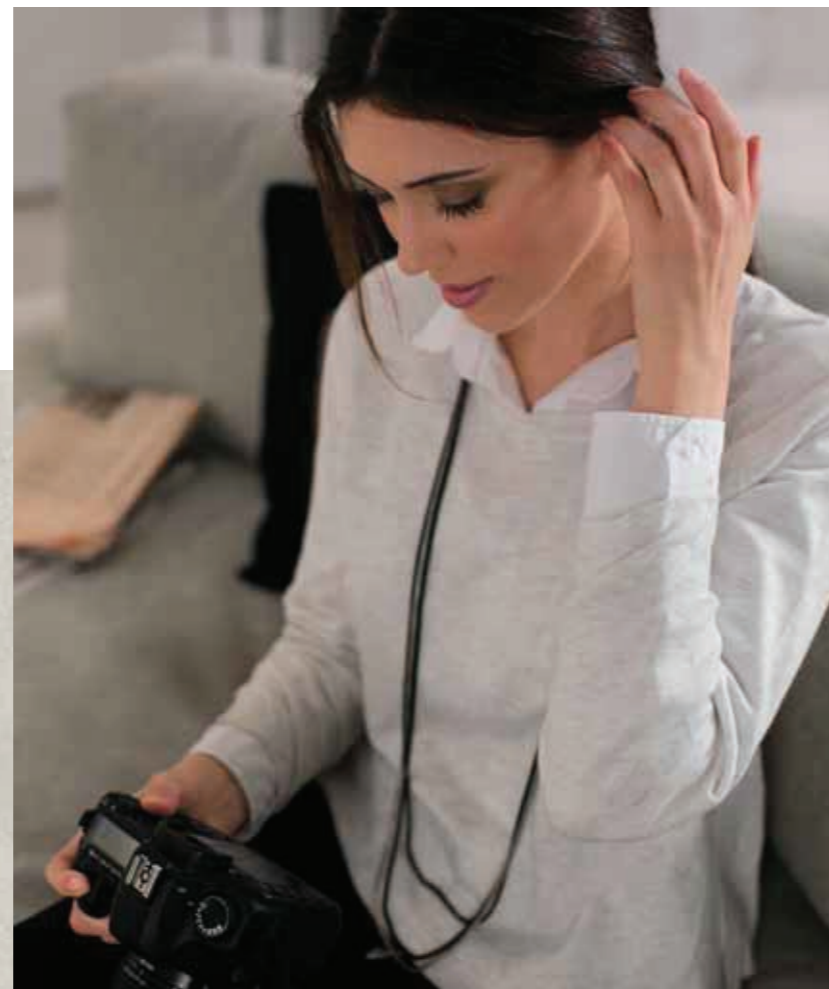


01

**01**  
Boost Pearl  
Matte 75x150 cm | 29 1/2"x59"

# THE POWER OF MATTER

THE INTENSITY OF THE MATTER IS ITS TRUE STRENGTH: CAPABLE OF GIVING FREE EXPRESSION TO AN URBAN CHIC STYLE, EVERY TIME DELINEATING AN ORIGINAL CONCEPT OF ENVIRONMENT.



**02**  
Boost Pearl  
Matte 75x150 cm | 29<sup>1</sup>/<sub>2</sub>"x59"  
Boost White  
Matte 75x150 cm | 29<sup>1</sup>/<sub>2</sub>"x59"  
Boost Pearl Mosaico Shapes  
31x33,5 cm | 12<sup>1</sup>/<sub>4</sub>"x13<sup>1</sup>/<sub>4</sub>"  
AtlasPlan Calacatta Royal  
Silk 162x324 cm | 63<sup>3</sup>/<sub>4</sub>"x127<sup>1</sup>/<sub>2</sub>"



● Does not release  
volatile organic  
compounds (VOC).

THE VERSATILITY OF THE TROWELED CONCRETE EFFECT SPEAKS A METROPOLITAN LANGUAGE IN ANY KIND OF RESIDENTIAL OR COMMERCIAL ENVIRONMENT, PROVING ITSELF TO BE THE IDEAL SOLUTION EVEN IN EXTRA-URBAN SETTINGS.



● Ensures durability over time long into the future.



**06**  
 Boost Pearl  
 Matte 75x150 cm | 29 1/2"x59"  
 Boost Pearl Mosaico Shapes  
 31x33,5 cm | 12 1/4"x13 1/4"

**07**  
 Boost Pearl Mosaico Shapes  
 31x33,5 cm | 12 1/4"x13 1/4"



**GOING  
 BEYOND  
 SIMPLICITY**

THE CONTRAST BETWEEN THE  
 GEOMETRIC SHAPES OF THE MOSAIC  
 AND THE SHADES OF THE SMALL TILES  
 CREATE AN ORIGINAL EARTHY EFFECT.



## IN THE MOOD TO RELAX

The three-dimensional wall tiles define the industrial mood of the bathroom. The metropolitan flavour of the environment is personalized by the touch of green concrete-effect tiles on the wall.



**WALL TILES**  
 Boost Sage  
 40x80 cm | 15 1/4"x31 1/2"  
 Boost White  
 40x80 cm | 15 1/4"x31 1/2"  
 Boost 3D Urban White  
 40x80 cm | 15 1/4"x31 1/2"

**PORCELAIN TILES**  
 Boost Pearl  
 Matte 75x150 cm | 29 1/2"x59"  
 Marvel Statuario Select  
 Polished 75x150 cm | 29 1/2"x59"



01

# PURE MOMENTS OF RELAXATION

**01**  
Boost Sage  
40x80 cm | 15<sup>3</sup>/<sub>4</sub>"x31<sup>1</sup>/<sub>2</sub>"

**02**  
Boost Sage  
40x80 cm | 15<sup>3</sup>/<sub>4</sub>"x31<sup>1</sup>/<sub>2</sub>"

Boost White  
40x80 cm | 15<sup>3</sup>/<sub>4</sub>"x31<sup>1</sup>/<sub>2</sub>"

Boost Pearl  
Matte 75x150 cm | 29<sup>1</sup>/<sub>2</sub>"x59"

Boost





● The wall tiles with a concrete effect have a soft and pleasant touch.



04

## A ROOM OF YOUR OWN

PERFECT FOR THE BATHROOM, IDEAL FOR ALL OTHER AREAS OF THE HOUSE. THE WALL TILES LEND THEMSELVES TO PROJECTS WITH PORCELAIN TILE FLOORS, WHERE ALL THE SPACES REFLECT THE SAME STYLE.

- 03 Boost Sage 40x80 cm | 15<sup>3</sup>/<sub>4</sub>"x31<sup>1</sup>/<sub>2</sub>"
- Boost White 40x80 cm | 15<sup>3</sup>/<sub>4</sub>"x31<sup>1</sup>/<sub>2</sub>"
- Boost Pearl Matte 75x150 cm | 29<sup>1</sup>/<sub>2</sub>"x59"

- 04 Boost Sage 40x80 cm | 15<sup>3</sup>/<sub>4</sub>"x31<sup>1</sup>/<sub>2</sub>"







## A PLAY OF UNEXPECTED COLORS

THE WALL TILES IN THE SAGE COLOR STANDS OUT AGAINST THE NEUTRAL COLORS OF PORCELAIN FLOOR TILES. AND IT MAKES THE THREE DIMENSIONAL WALL OF THE SINK AREA EVEN MORE DOWN TO EARTH.

- 05**  
 Boost Sage  
 40x80 cm | 15<sup>3</sup>/<sub>4</sub>"x31<sup>1</sup>/<sub>2</sub>"  
 Boost 3D Urban White  
 40x80 cm | 15<sup>3</sup>/<sub>4</sub>"x31<sup>1</sup>/<sub>2</sub>"  
 Boost Pearl  
 Matte 75x150 cm | 29<sup>1</sup>/<sub>2</sub>"x59"  
 Marvel Statuario Select  
 Polished 75x150 cm | 29<sup>1</sup>/<sub>2</sub>"x59"





INSPIRED BY THE IMPRESSION OF FORMWORK ON A ROUGH CONCRETE WALL, 3D URBAN IS A STYLISTIC CHOICE WITH A STRONG IMPACT, BOTH IN VISUAL AND TACTILE TERMS.

- 06**  
Boost 3D Urban White 40x80 cm | 15<sup>3</sup>/<sub>4</sub>"x31<sup>1</sup>/<sub>2</sub>"
- 07**  
Boost 3D Urban White 40x80 cm | 15<sup>3</sup>/<sub>4</sub>"x31<sup>1</sup>/<sub>2</sub>"
- Marvel Statuario Select Polished 75x150 cm | 29<sup>1</sup>/<sub>2</sub>"x59"



06



07

● Easy to clean and resistant to the most commonly used chemical agents.

# THE IDEAL SETTING FOR ANY STYLE

The versatility of the surface lends itself to creating environments that reflect the taste of those who designed them. The concrete effect creates the ideal setting for displaying stylish objects.



**PORCELAIN TILES**

Boost Tarmac  
Matte 75x150 cm | 29 1/2"x59"

Boost Grey  
Matte 75x150 cm | 29 1/2"x59"

Boost Tarmac Mosaico Hex Jade  
25x28,5 cm | 9 7/8"x11 1/4"

Marvel Edge Red Luxury  
Polished 75x150 cm | 29 1/2"x59"

Marvel Edge Royal Calacatta  
Polished 75x150 cm | 29 1/2"x59"

Marvel Edge Agata Azul  
Polished 75x150 cm | 29 1/2"x59"



● Can be installed with precise grout lines. This lends to a continual look to surfaces.

01

01 Boost Tarmac Matte 75x150 cm | 29 1/2"x59"  
Marvel Edge Red Luxury Polished 75x150 cm | 29 1/2"x59" / Marvel Edge Royal Calacatta Polished 75x150 cm | 29 1/2"x59" / Marvel Edge Agata Azul Polished 75x150 cm | 29 1/2"x59"



# STRIKING WELCOME

The vigorous look of concrete-effect porcelain floor tiles defines the atmosphere of retail projects and hospitality spaces. The earthy surface combined with warm shades becomes an element of compelling expressiveness.



**02**  
Boost Tarmac  
Matte 75x150 cm | 29 1/2"x59"  
Boost Grey  
Matte 75x150 cm | 29 1/2"x59"



● The surface is resistant to scratching and wear over time.



● Can be installed with precise grout lines. This lends to a continual look to surfaces.



## DESIGNED BY LIGHT AND SHADOWS

03  
Boost Tarmac  
Matte 75x150 cm | 29 1/2"x59"  
Boost Grey  
Matte 75x150 cm | 29 1/2"x59"

THE DARKER COLOR SEEMS LIKE A CONTRASTING RUG LAID ON THE FLOOR IN SHADES OF RAW CONCRETE. A DUALISM THAT DEFINES PATHWAYS AND LENGTHENS THE PERSPECTIVE, IN A PLAY OF LIGHT AND SHADOWS INTERRUPTED ONLY BY OBJECTS AND MARBLE EFFECT INSERTS.

04

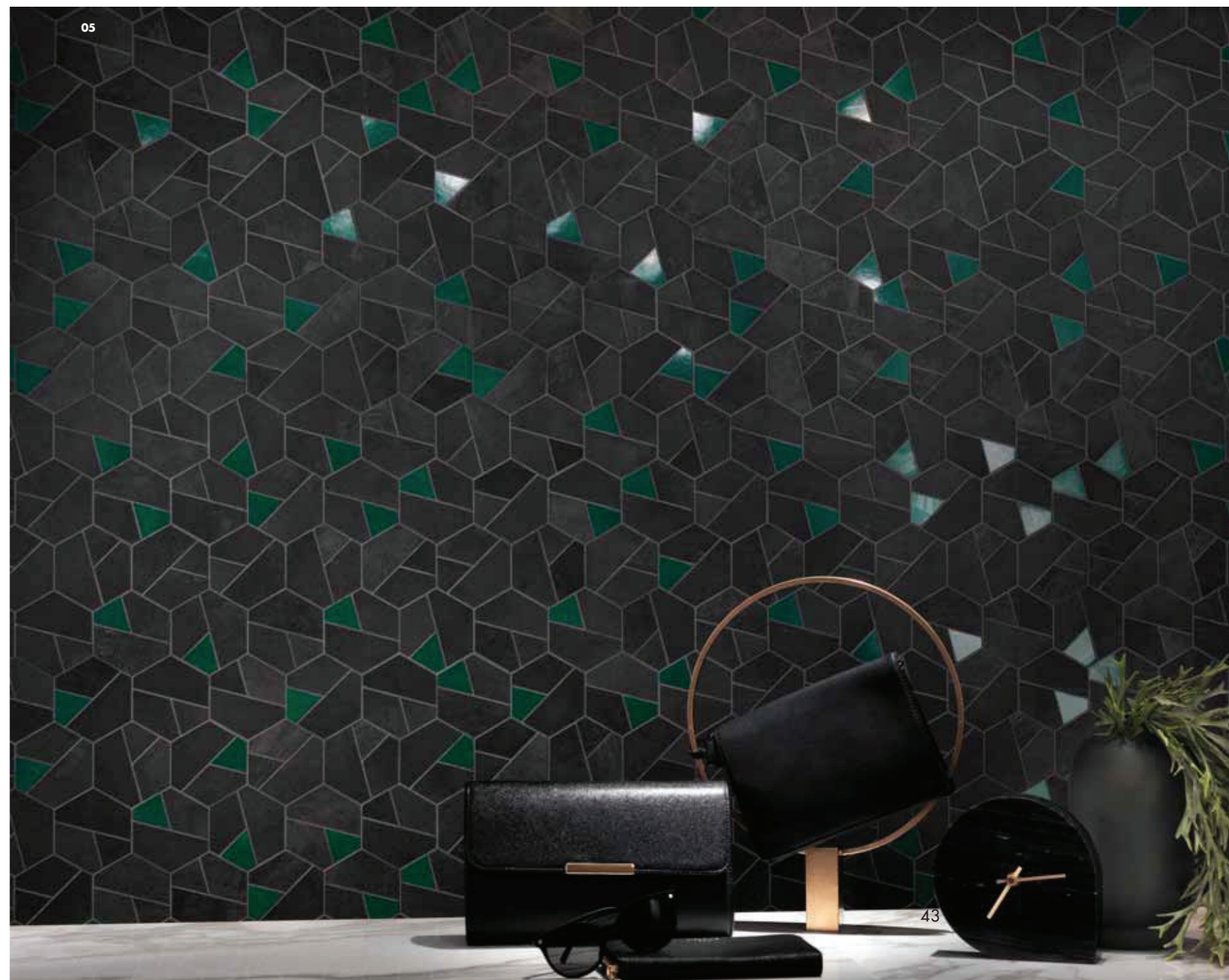


THE HEXAGONS MADE UP OF DIFFERENTLY SHAPED SMALL TILES, WITH INSERTS INSPIRED BY MURANO GLASS, ADD A NOTE OF COLOR AND VITALITY TO THE WALLS.

- 04**  
Boost Tarmac Matte 75x150 cm | 29 1/2"x59"
- Boost Tarmac Mosaico Hex Jade 25x28,5 cm | 9 7/8"x11 1/4"
- Marvel Edge Royal Calacatta Polished 75x150 cm | 29 1/2"x59"
- 05**  
Boost Tarmac Mosaico Hex Jade 25x28,5 cm | 9 7/8"x11 1/4"



05





## AUTHENTICITY THAT CREATES AN ATMOSPHERE

The stylistic fusion that derives from the combination of surfaces, volumes, and furnishings inspired by other materials like wood and marble shift the essential character of pure industrial style a more welcoming and sophisticated aesthetic.



### PORCELAIN TILES

Boost Smoke  
Matte 120x120 cm | 47 1/4"x47 1/4"

Boost Smoke Mosaico Hex Yellow  
25x28,5 cm | 9 7/8"x11 1/4"

Boost Smoke Mosaico Hex Black  
25x28,5 cm | 9 7/8"x11 1/4"

-

Arbor Cognac  
Matte 18,5x150 cm | 7 1/4"x59"





01

● The surface guarantees high resistance to stains.



02

**01/02**  
Boost Smoke  
Matte 120x120 cm | 47 1/4"x47 1/4"  
Boost Smoke Mosaico Hex Yellow  
25x28,5 cm | 9 7/8"x11 1/4"  
Boost Smoke Mosaico Hex Black  
25x28,5 cm | 9 7/8"x11 1/4"  
-  
Arbor Cognac  
Matte 18,5x150 cm | 7 1/4"x59"



03

**03**  
 Boost Smoke  
 Matte 120x120 cm | 47 1/4"x47 1/4"  
 Boost Smoke Mosaico Hex Black  
 25x28,5 cm | 9 7/8"x11 1/4"  
 -  
 Arbor Cognac  
 Matte 18,5x150 cm | 7 1/4"x59"

**04**  
 Boost Smoke  
 Matte 120x120 cm | 47 1/4"x47 1/4"  
 Boost Smoke Mosaico Hex Yellow  
 25x28,5 cm | 9 7/8"x11 1/4"  
 -  
 Arbor Cognac  
 Matte 18,5x150 cm | 7 1/4"x59"

THE FLOOR'S CONCRETE-INSPIRED SURFACE DIALOGS IN PERFECT HARMONY WITH THE NATURAL CHARACTER OF WOOD-EFFECT PORCELAIN FLOOR TILES. AN ALTERNATION THAT DEFINES THE SPACE AND ITS DIFFERENT FUNCTIONAL AREAS.



04

● Functional and easy to maintain



05

05 Boost Smoke Matte 120x120 cm | 47 1/4"x47 1/4" / Boost Smoke Mosaico Hex Black 25x28,5 cm | 9 7/8"x11 1/4" / Boost Smoke Mosaico Hex Yellow 25x28,5 cm | 9 7/8"x11 1/4"  
 06 Boost Smoke Mosaico Hex Black 25x28,5 cm | 9 7/8"x11 1/4"

## PLAYING WITH SURFACES

SIMPLE GEOMETRIC PATTERNS  
CREATE FASCINATING EFFECTS  
THANKS TO THE PRESENCE OF  
COLORED GLASS INSERTS.



06

## A WARM WELCOME

A functional space enriched by a touch of color. In hospitality spaces, the concrete effect creates environments where it is easy to feel at ease.



### WALL TILES

Boost Red  
40x80 cm | 15<sup>3</sup>/<sub>4</sub>"x31<sup>1</sup>/<sub>2</sub>"

Boost Grey  
40x80 cm | 15<sup>3</sup>/<sub>4</sub>"x31<sup>1</sup>/<sub>2</sub>"

Boost 3D Urban Grey  
40x80 cm | 15<sup>3</sup>/<sub>4</sub>"x31<sup>1</sup>/<sub>2</sub>"

Boost Red Corner 40  
1,4x40 cm | 1<sup>1</sup>/<sub>2</sub>"x15<sup>3</sup>/<sub>4</sub>"

Boost Red Corner A.E.  
1,4x1,4 cm | 1<sup>1</sup>/<sub>2</sub>"x1<sup>1</sup>/<sub>2</sub>"

### PORCELAIN TILES

Boost Grey  
Matte 75x150 cm | 29<sup>1</sup>/<sub>2</sub>"x59"

Arbor Cognac  
Matte 18,5x150 cm | 7<sup>1</sup>/<sub>4</sub>"x59"

THE MATERIAL EFFECTS TYPICAL OF CONCRETE SURFACES MAKE THE WHITE BODY WALL TILES PLEASING TO THE EYE AND TO THE TOUCH.



01

**01**  
Boost Red  
40x80 cm | 15<sup>3</sup>/<sub>4</sub>"x31<sup>1</sup>/<sub>2</sub>"

**02**  
Boost Red  
40x80 cm | 15<sup>3</sup>/<sub>4</sub>"x31<sup>1</sup>/<sub>2</sub>"

Boost 3D Urban Grey  
40x80 cm | 15<sup>3</sup>/<sub>4</sub>"x31<sup>1</sup>/<sub>2</sub>"

Arbor Cognac  
Matte 18,5x150 cm | 7<sup>1</sup>/<sub>4</sub>"x59"

02



● Easy to drill and cut and lay, suitable for multiple application in commercial venues.



THE SOFT THREE-DIMENSIONAL RELIEF OF THE WALL TILES RECALLS CRAFTSMANSHIP INSPIRED BY FORMWORKS.



● The compact surface inhibits the nestling and reproduction of moulds and mites.

04

**03**  
 Boost Red 40x80 cm | 15<sup>3</sup>/<sub>4</sub>"x31<sup>1</sup>/<sub>2</sub>"  
 Boost 3D Urban Grey 40x80 cm | 15<sup>3</sup>/<sub>4</sub>"x31<sup>1</sup>/<sub>2</sub>"  
 Boost Red Corner 40 1,4x40 cm | 1<sup>1</sup>/<sub>2</sub>"x15<sup>3</sup>/<sub>4</sub>"  
 Boost Red Corner A.E. 1,4x1,4 cm | 1<sup>1</sup>/<sub>2</sub>"x1<sup>1</sup>/<sub>2</sub>"  
 Boost Grey Matte 75x150 cm | 29<sup>1</sup>/<sub>2</sub>"x59"  
 -  
 Arbor Cognac Matte 18,5x150 cm | 7<sup>1</sup>/<sub>4</sub>"x59"

**04**  
 Boost 3D Urban Grey 40x80 cm | 15<sup>3</sup>/<sub>4</sub>"x31<sup>1</sup>/<sub>2</sub>"  
 Boost Red 40x80 cm | 15<sup>3</sup>/<sub>4</sub>"x31<sup>1</sup>/<sub>2</sub>" /  
 Boost Red Corner 40 1,4x40 cm | 1<sup>1</sup>/<sub>2</sub>"x15<sup>3</sup>/<sub>4</sub>"  
 Boost Red Corner A.E. 1,4x1,4 cm | 1<sup>1</sup>/<sub>2</sub>"x1<sup>1</sup>/<sub>2</sub>"  
 Boost Grey Matte 75x150 cm | 29<sup>1</sup>/<sub>2</sub>"x59"

# URBAN STYLE IN THE ROUND

**05**  
Boost Red  
40x80 cm | 15<sup>3</sup>/<sub>4</sub>"x31<sup>1</sup>/<sub>2</sub>"  
Boost 3D Urban Grey  
40x80 cm | 15<sup>3</sup>/<sub>4</sub>"x31<sup>1</sup>/<sub>2</sub>"  
Boost Grey  
Matte 75x150 cm | 29<sup>1</sup>/<sub>2</sub>"x59"  
-  
Arbor Cognac  
Matte 18,5x150 cm | 7<sup>1</sup>/<sub>4</sub>"x59"  
**06**  
Boost Red  
40x80 cm | 15<sup>3</sup>/<sub>4</sub>"x31<sup>1</sup>/<sub>2</sub>"



● Impact and wear resistant:  
suitable for commercial venues.





## INDUSTRIAL STYLE FOR CHIC LIVING

Large formats on the floor and walls during renovations allow you to update the interior design without changing the existing architecture.



### PORCELAIN TILES

Boost Grey  
Matte / Matt 120x278 cm | 47 1/4" x 109 1/2"  
Boost White  
Matte / Matt 120x278 cm | 47 1/4" x 109 1/2"





● No deterioration or production of dust.



## EXTENSIVE DESIGN POSSIBILITIES

**01**

Boost Grey  
Matte 120x278 cm | 47 1/4"x109 1/2"

Boost White  
Matte 120x278 cm | 47 1/4"x109 1/2"

**02**

Boost Grey  
Matte 120x278 cm | 47 1/4"x109 1/2"



03

120x278 cm  $\pm$  6 mm

THE LARGE FORMAT SLABS IN THE OPEN SPACES OF THE LIVING ROOM AND KITCHEN CREATE A CONTINUOUS SURFACE, MINIMIZING THE VISIBILITY OF THE JOINTS.

**03/04**  
**FLOOR**  
 Boost Grey  
 Matte 120x278 cm | 47 1/4"x109 1/2"

**COUNTERTOP**  
 AtlasPlan Boost White  
 Silk 162x324 cm | 63 3/4"x 127 1/2"



04

● Resistant to color-fading due to sunlight exposure.



# CONTEMPORARY RELAX



**05/06**  
**FLOOR**  
Boost White  
Matte 120x120 cm | 47 1/4"x47 1/4"  
**WALL**  
Boost Smoke  
Matte 120x278 cm | 47 1/4"x109 1/2"  
**BATHTUB**  
AtlasPlan Boost Smoke  
Matte 162x324 cm | 63 3/4"x 127 1/2"



## SPECIAL SOLUTIONS FOR EXCLUSIVE PLACES

The concrete effect extends to all spaces of everyday life, from the most intimate to the most sociable, from the interior to the exterior. The non-slip Grip finish and the 20 mm thickness allow you to project your own style in safety and continuity, extending the design possibilities.



### PORCELAIN TILES

Boost White  
Grip 120x120 cm | 47<sup>1</sup>/<sub>4</sub>"x47<sup>1</sup>/<sub>4</sub>"

Boost White  
Matte 120x120 cm | 47<sup>1</sup>/<sub>4</sub>"x47<sup>1</sup>/<sub>4</sub>"

### OUTDOOR PAVING

Boost White  $\pm$  20mm  
120x120 cm | 47<sup>1</sup>/<sub>4</sub>"x47<sup>1</sup>/<sub>4</sub>"

Boost White Round  $\pm$  20mm  
33x120 cm | 13"x47<sup>1</sup>/<sub>4</sub>"

Boost White Round Angolare Dx/Sx  $\pm$  20mm  
33x120 cm | 13"x47<sup>1</sup>/<sub>4</sub>"



● Resistant to salty and chlorinated water: ideal for swimming pools.



**01/02**  
**OUTDOOR PAVING**  
 Boost White ± 20mm  
 120x120 cm | 47 1/4"x47 1/4"



● Material resistant to frost.

03 Boost White Grip 120x120 cm | 47 1/4"x47 1/4" / Boost White Matte 120x120 cm | 47 1/4"x47 1/4"  
 OUTDOOR PAVING Boost White 20mm 120x120 cm | 47 1/4"x47 1/4" / Boost White Round 20mm 33x120 cm | 13"x47 1/4"  
 04 Boost White Grip 120x120 cm | 47 1/4"x47 1/4" / Boost White Matte 120x120 cm | 47 1/4"x47 1/4" OUTDOOR PAVING Boost White 20mm 120x120 cm

THE 120X120 CM SIZE WITH GRIP FINISH GUARANTEES TOTAL APPLICATION CONTINUITY INDOORS AND OUT.





BRIGHT INTERIORS, RELAXING ATMOSPHERES: THE LARGE SIZES ALLOW YOU TO DESIGN CONTEMPORARY INTERIORS IN HARMONY WITH THE LANDSCAPE WITH MAXIMUM FREEDOM.



# TOTAL FREEDOM

05  
Boost White  
Matte 120x120 cm | 47 1/4"x47 1/4"  
Marvel Edge Red Luxury  
Polished 75x150 cm | 29 1/2"x59"

# PERFECT EVERYWHERE

**06**  
Boost White  
Grip 120x120 cm | 47 1/4"x47 1/4"  
  
Boost White  
Matte 120x120 cm | 47 1/4"x47 1/4"  
  
**07**  
Boost White  
Matte 120x120 cm | 47 1/4"x47 1/4"  
  
Marvel Edge Red Luxury  
Polished 75x150 cm | 29 1/2"x59"







## THE NEW DIMENSION OF BEAUTY

The concrete effect opens the doors to contemporary style: the large porcelain tiles measuring 120x278 cm stand out for their technical potential and compositional versatility, furnishing kitchen and living spaces where visual impact goes hand in hand with design.



**FLOOR**  
Boost White  
Matte 120x278 cm | 47 1/4"x109 1/2"

**WALL**  
Boost Tarmac  
Matte 120x278 cm | 47 1/4"x109 1/2"

**KITCHEN COUNTERTOP**  
AtlasPlan Boost White  
Matte 162x324 cm | 63 3/4"x 127 1/2"

PERFECT FOR KITCHEN  
COUNTERTOPS: THE LARGE  
PORCELAIN SLABS OFFER  
HYGIENIC SURFACES RESISTANT  
TO HIGH TEMPERATURES.



01

**01/02**  
**FLOOR**  
Boost White  
Matte 120x278 cm | 47 1/4"x109 1/2"  
**WALL**  
Boost Tarmac  
Matte 120x278 cm | 47 1/4"x109 1/2"  
**KITCHEN COUNTERTOP**  
AtlasPlan Boost White  
Matte 162x324 cm | 63 3/4"x 127 1/2"

Boost

02



● The surface is resistant to  
scratching and wear over time.

80

81



# FEELING CONCRETE, LOOK CONTEMPORARY

**FLOOR**  
Boost Pearl  
Matte 120x120 cm | 47<sup>1</sup>/<sub>4</sub>"x47<sup>1</sup>/<sub>4</sub>"

**WALL**  
Boost Tarmac  
Matte 120x278 cm | 47<sup>1</sup>/<sub>4</sub>"x109<sup>1</sup>/<sub>2</sub>"

**KITCHEN COUNTERTOP**  
AtlasPlan Boost Smoke  
Matte 162x324 cm | 63<sup>1</sup>/<sub>4</sub>"x 127<sup>1</sup>/<sub>2</sub>"



THE CONCRETE EFFECT MAKES THE KITCHEN SPACE MODERN AND WELCOMING, PERFECT IN EVERY DETAIL. THE SOPHISTICATED LOOK OF THE MATERIAL EXPANDS TO TILES MEASURING 120x278 CM WITH A THICKNESS OF 6 MM, FURNISHING WALLS AND FLOORS THROUGHOUT THE HOUSE.

**01/02****FLOOR**

Boost Pearl  
Matte 120x120 cm | 47 1/4"x47 1/4"

**WALL**

Boost Tarmac  
Matte 120x278 cm | 47 1/4"x109 1/2"

**KITCHEN COUNTERTOP**

AtlasPlan Boost Smoke  
Matte 162x324 cm | 63 3/4"x 127 1/2"



## NEW AESTHETIC EXCELLENCE



**01/02  
FLOOR**  
Boost Tarmac  
Matte 120x278 cm | 47 1/4" x 109 1/2"

**WALL**  
Boost Pearl  
Matte 120x278 cm | 47 1/4" x 109 1/2"

**KITCHEN COUNTERTOP**  
AtlasPlan Marvel Stone Basaltina Volcano  
Matte 162x324 cm | 63 3/4" x 127 1/2"



01



02

162x324 cm  $\approx$  6/12 mm

LARGE SLABS MEASURING 162x324 CM MAKE IT POSSIBLE TO CREATE KITCHEN WORKTOPS AND TABLES WITH A THAT IS RESISTANT TO SCRATCHES AND WEAR.

**01/02**  
**FLOOR**  
 Boost Tarmac  
 Matte 120x278 cm | 47 1/4"x109 1/2"

**WALL**  
 Boost Pearl  
 Matte 120x278 cm | 47 1/4"x109 1/2"

**KITCHEN COUNTERTOP**  
 AtlasPlan Marvel Stone Basaltina Volcano  
 Matte 162x324 cm | 63 3/4"x 127 1/2"

# BOOST PORCELAIN TILES

COLOURED BODY PORCELAIN TILES - RECTIFIED MONOCALIBER

## SIZES AND SURFACES

### MATTE

120x278 cm - 47 <sup>1</sup> / <sub>4</sub> "x109 <sup>1</sup> / <sub>2</sub> "	± 6 mm ♦
120x240 cm - 47 <sup>1</sup> / <sub>4</sub> "x94 <sup>1</sup> / <sub>2</sub> "	± 9 mm ♦
120x120 cm - 47 <sup>1</sup> / <sub>4</sub> "x47 <sup>1</sup> / <sub>4</sub> "	± 9 mm ♦
75x150 cm - 29 <sup>1</sup> / <sub>2</sub> "x59"	± 9,5 mm ♦
75x75 cm - 29 <sup>1</sup> / <sub>2</sub> "x29 <sup>1</sup> / <sub>2</sub> "	± 9,5 mm ♦
45x90 cm - 17 <sup>3</sup> / <sub>4</sub> "x35 <sup>3</sup> / <sub>8</sub> "	± 9 mm ♦
60x60 cm - 23 <sup>5</sup> / <sub>8</sub> "x23 <sup>5</sup> / <sub>8</sub> "	± 9 mm ♦
30x60 cm - 11 <sup>3</sup> / <sub>4</sub> "x23 <sup>5</sup> / <sub>8</sub> "	± 9 mm ♦



### GRIP

120x120 cm - 47 <sup>1</sup> / <sub>4</sub> "x47 <sup>1</sup> / <sub>4</sub> "	± 9 mm ♦
--	----------



### OUTDOOR PAVING

120x120 cm - 47 <sup>1</sup> / <sub>4</sub> "x47 <sup>1</sup> / <sub>4</sub> "	± 20 mm ■
60x120 cm - 23 <sup>5</sup> / <sub>8</sub> "x47 <sup>1</sup> / <sub>4</sub> "	± 20 mm ■
90x90 cm - 35 <sup>3</sup> / <sub>8</sub> "x35 <sup>3</sup> / <sub>8</sub> "	± 20 mm ■



### MATTE

NON RECTIFIED

162x324 cm - 63 <sup>3</sup> / <sub>4</sub> "x127 <sup>1</sup> / <sub>2</sub> "	± 6/12 mm ◐
---	-------------



- ♦ Available in all colors
- ◐ Available in the following colors: White, Smoke
- Available in the following colors: White, Grey, Smoke, Tarmac

### COLOR-SHADING

White, Pearl  
Grey, Smoke  
Tarmac



V3 MODERATE  
VARIATION

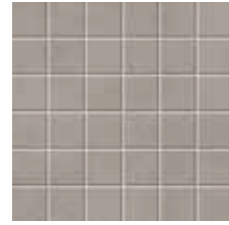


# BOOST PORCELAIN TILE DECORS

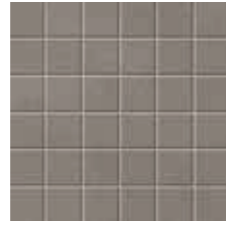
**Boost White Mosaico**  
30x30 cm - 11<sup>3</sup>/<sub>4</sub>"x11<sup>3</sup>/<sub>4</sub>"



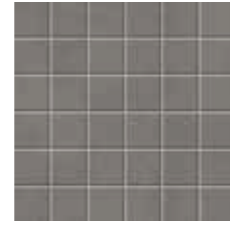
**Boost Pearl Mosaico**  
30x30 cm - 11<sup>3</sup>/<sub>4</sub>"x11<sup>3</sup>/<sub>4</sub>"



**Boost Grey Mosaico**  
30x30 cm - 11<sup>3</sup>/<sub>4</sub>"x11<sup>3</sup>/<sub>4</sub>"



**Boost Smoke Mosaico**  
30x30 cm - 11<sup>3</sup>/<sub>4</sub>"x11<sup>3</sup>/<sub>4</sub>"



**Boost Tarmac Mosaico**  
30x30 cm - 11<sup>3</sup>/<sub>4</sub>"x11<sup>3</sup>/<sub>4</sub>"



**Boost White Mosaico Shapes**  
31x33,5 cm - 12<sup>1</sup>/<sub>4</sub>"x13<sup>1</sup>/<sub>4</sub>"



**Boost Pearl Mosaico Shapes**  
31x33,5 cm - 12<sup>1</sup>/<sub>4</sub>"x13<sup>1</sup>/<sub>4</sub>"



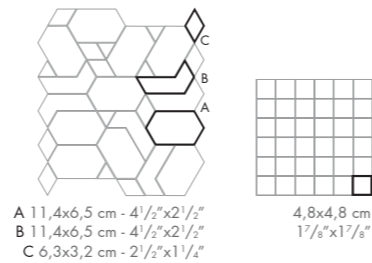
**Boost Grey Mosaico Shapes**  
31x33,5 cm - 12<sup>1</sup>/<sub>4</sub>"x13<sup>1</sup>/<sub>4</sub>"



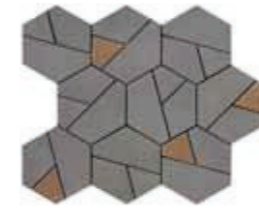
**Boost Smoke Mosaico Shapes**  
31x33,5 cm - 12<sup>1</sup>/<sub>4</sub>"x13<sup>1</sup>/<sub>4</sub>"



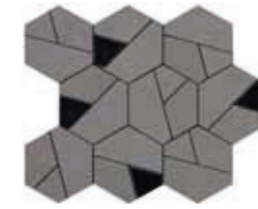
**Boost Tarmac Mosaico Shapes**  
31x33,5 cm - 12<sup>1</sup>/<sub>4</sub>"x13<sup>1</sup>/<sub>4</sub>"



**Boost Smoke Mosaico Hex Yellow**  
25x28,5 cm - 9<sup>7</sup>/<sub>8</sub>"x11<sup>1</sup>/<sub>4</sub>"



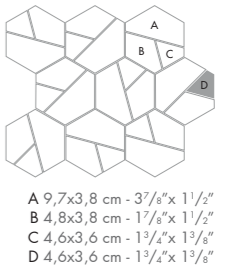
**Boost Smoke Mosaico Hex Black**  
25x28,5 cm - 9<sup>7</sup>/<sub>8</sub>"x11<sup>1</sup>/<sub>4</sub>"



**Boost Tarmac Mosaico Hex Jade**  
25x28,5 cm - 9<sup>7</sup>/<sub>8</sub>"x11<sup>1</sup>/<sub>4</sub>"



**Boost Tarmac Mosaico Hex Black**  
25x28,5 cm - 9<sup>7</sup>/<sub>8</sub>"x11<sup>1</sup>/<sub>4</sub>"





# BOOST WALL TILES

WHITEBODY WALL TILES - RECTIFIED MONOCALIBER

40x80 cm - 15<sup>3</sup>/<sub>4</sub>"x31<sup>1</sup>/<sub>2</sub>" ± 8,5 mm  
 3D Urban 40x80 cm - 15<sup>3</sup>/<sub>4</sub>"x31<sup>1</sup>/<sub>2</sub>" ± 10 mm



Boost White  
40x80 cm - 15<sup>3</sup>/<sub>4</sub>"x31<sup>1</sup>/<sub>2</sub>"



Boost Pearl  
40x80 cm - 15<sup>3</sup>/<sub>4</sub>"x31<sup>1</sup>/<sub>2</sub>"



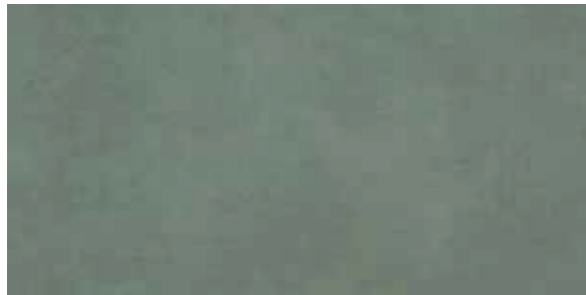
Boost Grey  
40x80 cm - 15<sup>3</sup>/<sub>4</sub>"x31<sup>1</sup>/<sub>2</sub>"



Boost Smoke  
40x80 cm - 15<sup>3</sup>/<sub>4</sub>"x31<sup>1</sup>/<sub>2</sub>"



Boost Sage  
40x80 cm - 15<sup>3</sup>/<sub>4</sub>"x31<sup>1</sup>/<sub>2</sub>"



Boost Red  
40x80 cm - 15<sup>3</sup>/<sub>4</sub>"x31<sup>1</sup>/<sub>2</sub>"



## COLOR-SHADING

White, Pearl,  
Grey, Smoke  
Sage, Red



V2 SLIGHT  
VARIATION

# BOOST WALL TILE DECORS

Boost 3D Urban White  
40x80 cm - 15<sup>3</sup>/<sub>4</sub>"x31<sup>1</sup>/<sub>2</sub>"



Boost 3D Urban Pearl  
40x80 cm - 15<sup>3</sup>/<sub>4</sub>"x31<sup>1</sup>/<sub>2</sub>"



Boost 3D Urban Grey  
40x80 cm - 15<sup>3</sup>/<sub>4</sub>"x31<sup>1</sup>/<sub>2</sub>"



Boost White  
Minibrick  
30,5x30,5 cm - 12"x12"



Boost Pearl  
Minibrick  
30,5x30,5 cm - 12"x12"



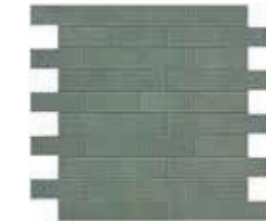
Boost Grey  
Minibrick  
30,5x30,5 cm - 12"x12"



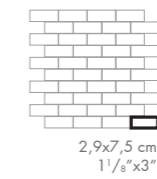
Boost Smoke  
Minibrick  
30,5x30,5 cm - 12"x12"



Boost Sage  
Minibrick  
30,5x30,5 cm - 12"x12"

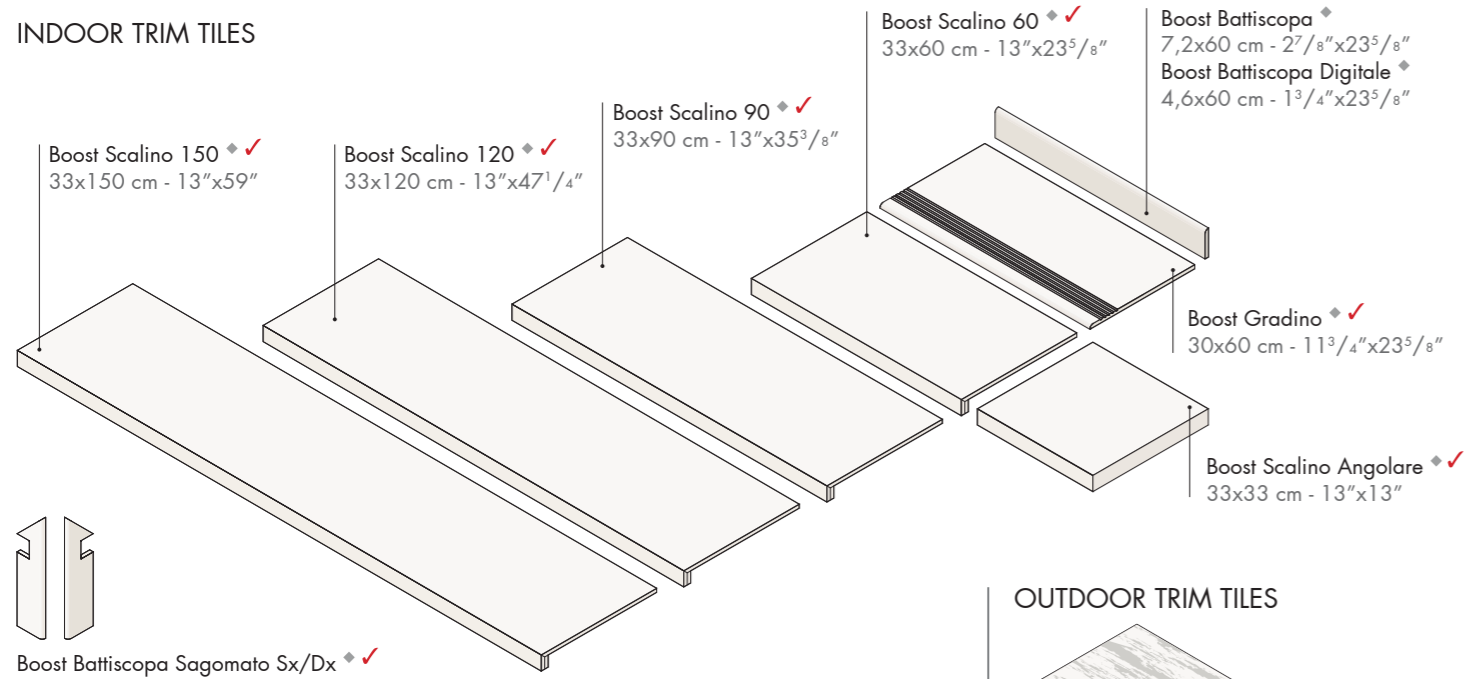


Boost Red  
Minibrick  
30,5x30,5 cm - 12"x12"



## BOOST PORCELAIN TRIM TILES

### INDOOR TRIM TILES



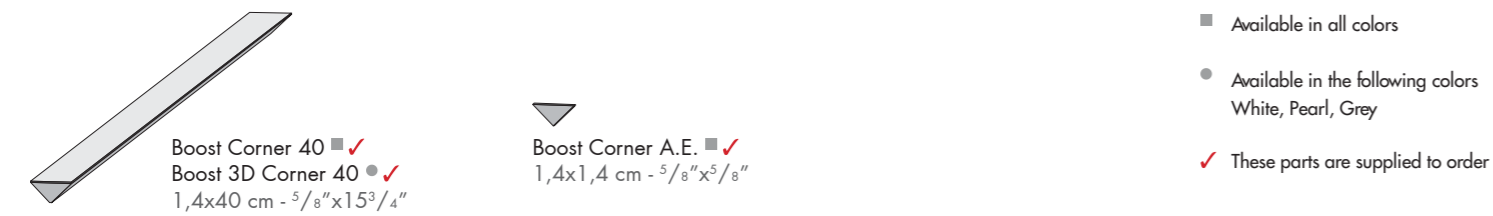
- ♦ Available in all colors
- ✓ These parts are supplied to order

### OUTDOOR TRIM TILES ✂ 20 mm



- ♦ Right/left angular elements are available
- \* Available in the following colors: White, Grey, Smoke, Tarmac
- ✓ These parts are supplied to order

### WALL TRIM TILES



## White Body wall tiles - Rectified monocaliber



Compliant with standards EN 14411 annex L group BIII  
Compliant with standards ISO 13006 annex L group BIII

40x80 cm - 15<sup>3</sup>/<sub>4</sub>"x31<sup>1</sup>/<sub>2</sub>" ± 8,5 mm  
40x80 cm - 15<sup>3</sup>/<sub>4</sub>"x31<sup>1</sup>/<sub>2</sub>" ± 10 mm 3D Urban

Technical features	Test Method	Requirements for nominal size N		
		7 cm ≤ N < 15 cm	N ≥ 15 cm	
		(mm)	(%)	(mm)
Length and width	ISO 10545-2	± 0,75 <sup>(M)</sup>	± 0,5 <sup>(M)</sup>	± 2,0 <sup>(M)</sup>
Thickness		± 0,5 <sup>(**)</sup>	± 10 <sup>(**)</sup>	± 0,5 <sup>(**)</sup>
Straightness of sides		± 0,5 <sup>(***)</sup>	± 0,3 <sup>(***)</sup>	± 1,5 <sup>(***)</sup>
Rectangularity		± 0,75 <sup>(****)</sup>	± 0,5 <sup>(****)</sup>	± 2,0 <sup>(****)</sup>
Surface flatness	ISO 10545-2	c.c. + 0,75 - 0,50	c.c. + 0,5 - 0,3	c.c. + 2,0 - 1,5
		e.c. + 0,75 - 0,50	e.c. + 0,5 - 0,3	e.c. + 2,0 - 1,5
		w. ± 0,75	w. ± 0,5	w. ± 2,0
Water absorption (in% by mass)	ISO 10545-3	Average >10%. When the average > 20%, this shall be indicated. Individual value > 9%		
Breaking strength Modulus of rupture	ISO 10545-4	S ≥ 600 N		
		R ≥ 15 N/mm <sup>2</sup>		
Coefficient of thermal linear expansion	ISO 10545-8	Declared value		
Thermal shock resistance	ISO 10545-9	Pass according to EN ISO 10545-1		
Moisture expansion (in mm/m)	ISO 10545-10	Declared value		
Crazing resistance	ISO 10545-11	Pass according to EN ISO 10545-1		
Bond strength/adhesion for improved cementitious adhesives	EN 1348	Declared value		
Reaction to fire	-	Class A1		
Resistance to household chemicals and swimming pool salts Resistance to low concentrations of acids and alkalis Resistance to high concentrations of acids and alkalis	ISO 10545-13	Minimum Class B		
		Declared Class		
		Declared Class		
Resistance to staining	ISO 10545-14	Minimum Class 3		
Release of dangerous substances: Cadmium (in mg/dm <sup>2</sup> ) and Lead (in mg/dm <sup>2</sup> )	ISO 10545-15	Declared value		

<sup>(M)</sup> The permissible deviation, in % or mm, of the average size for each tile (2 or 4 sides) from work size (WS).  
<sup>(\*\*)</sup> The permissible deviation, in % or mm, of the average thickness for each tile from the work size thickness (WS).  
<sup>(\*\*\*)</sup> The maximum permissible deviation from straightness, in % or mm, related to the corresponding work sizes (WS).  
<sup>(\*\*\*\*)</sup> The maximum permissible deviation from rectangularity, in % or mm, related to the corresponding work sizes (WS).  
c.c. The maximum permissible deviation from centre curvature, in % or mm, related to diagonal calculated from the work sizes (WS).  
e.c. The maximum permissible deviation from edge curvature, in % or mm, related to the corresponding work sizes (WS).  
w. The maximum permissible deviation from warpage, in % or mm, related to diagonal calculated from the work sizes (WS).

## Coloured body porcelain tiles - Rectified monocaliber



Compliant with standards EN 14411 annex G group BII  
Compliant with standards ISO 13006 annex G group BII

120x278 cm - 47<sup>1</sup>/<sub>4</sub>"x109<sup>1</sup>/<sub>2</sub>" ± 6 mm 75x75 cm - 29<sup>1</sup>/<sub>2</sub>"x29<sup>1</sup>/<sub>2</sub>" ± 9,5 mm 120x120 cm - 47<sup>1</sup>/<sub>4</sub>"x47<sup>1</sup>/<sub>4</sub>" ± 20 mm  
120x240 cm - 47<sup>1</sup>/<sub>4</sub>"x94<sup>1</sup>/<sub>2</sub>" ± 9 mm 45x90 cm - 17<sup>3</sup>/<sub>8</sub>"x35<sup>3</sup>/<sub>8</sub>" ± 9 mm 60x120 cm - 23<sup>3</sup>/<sub>8</sub>"x47<sup>1</sup>/<sub>4</sub>" ± 20 mm  
120x120 cm - 47<sup>1</sup>/<sub>4</sub>"x47<sup>1</sup>/<sub>4</sub>" ± 9 mm 60x60 cm - 23<sup>3</sup>/<sub>8</sub>"x23<sup>3</sup>/<sub>8</sub>" ± 9 mm 90x90 cm - 35<sup>3</sup>/<sub>8</sub>"x35<sup>3</sup>/<sub>8</sub>" ± 20 mm  
75x150 cm - 29<sup>1</sup>/<sub>2</sub>"x59" ± 9,5 mm 30x60 cm - 11<sup>3</sup>/<sub>4</sub>"x23<sup>3</sup>/<sub>8</sub>" ± 9 mm

Technical features	Test Method	Requirements for nominal size N		
		7 cm ≤ N < 15 cm	N ≥ 15 cm	
		(mm)	(%)	(mm)
Length and width	ISO 10545-2	± 0,9 <sup>(M)</sup>	± 0,6 <sup>(M)</sup>	± 2,0 <sup>(M)</sup>
Thickness		± 0,5 <sup>(**)</sup>	± 5 <sup>(**)</sup>	± 0,5 <sup>(**)</sup>
Straightness of sides		± 0,75 <sup>(***)</sup>	± 0,5 <sup>(***)</sup>	± 1,5 <sup>(***)</sup>
Rectangularity (Measurement only on short edges when L/l ≥ 3)		± 0,75 <sup>(****)</sup>	± 0,5 <sup>(****)</sup>	± 2,0 <sup>(****)</sup>
Surface flatness	ISO 10545-2	c.c. ± 0,75	c.c. ± 0,5	c.c. ± 2,0
		e.c. ± 0,75	e.c. ± 0,5	e.c. ± 2,0
		w. ± 0,75	w. ± 0,5	w. ± 2,0
Water absorption (in% by mass)	ISO 10545-3	E <sub>v</sub> ≤ 0,5% Individual Maximum 0,6%		
	ASTM C 373	Requirement ANSI A137.1-2017 Water absorption max 0,5%		
Breaking strength Modulus of rupture	ISO 10545-4	S ≥ 700N (for thickness < 7,5 mm - per spessore < 7,5 mm) S ≥ 1300N (for thickness ≥ 7,5 mm - per spessore ≥ 7,5 mm)		
		R ≥ 35 N/mm <sup>2</sup>		
Bending strength and breaking load	EN 1339 Annex F	-		
Impact resistance, as coefficient of restitution	ISO 10545-5	Declared value		
Mohs hardness	EN 101	-		
Resistance to deep abrasion of unglazed tiles (removed volume)	ISO 10545-6	≤ 175 mm <sup>3</sup>		
Coefficient of thermal linear expansion	ISO 10545-8	Declared value		
Thermal shock resistance	ISO 10545-9	Pass according to EN ISO 10545-1		
Moisture expansion (in mm/m)	ISO 10545-10	Declared value		
Frost resistance	ISO 10545-12	Pass according to EN ISO 10545-1		
Bond strength/adhesion for improved cementitious adhesives	EN 1348	Declared value		
Reaction to fire	-	Class A1 or A1 <sub>n</sub>		
Resistance to household chemicals and swimming pool salts Resistance to low concentrations of acids and alkalis Resistance to high concentrations of acids and alkalis	ISO 10545-13	Minimum Class B		
		Declared Class		
		Declared Class		
Resistance to staining	ISO 10545-14	Declared Class		
Shod Ramp Test	DIN 51130	Declared value		
	DIN 51097	Declared value		
Pendulum Friction Test	BS 7976	PTV ≥ 36 classifies the surface as "low slip risk"		
Pendulum Friction Test	AS 4586	Declared Classification of the new pedestrian surface materials according to the Pendulum Test		
	UNE-ENV 12633	Declared value		
Coefficient of friction (COF)	B.C.R.A. Rep. CEC/81	D. M. 236/89 del 14/06/89 μ > 0,40 per elemento scivolante cuoio su pavimentazione asciutta μ > 0,40 per elemento scivolante gomma dura su pavimentazione bagnata		
		ANSI A137.1-2017 Requires a minimum value of 0.42 for level interior space expected to be walked upon when wet. (3)		
Dynamic coefficient of friction (DCOF)	ANSI A137.1	ANSI A137.1-2017 Requires a minimum value of 0.42 for level interior space expected to be walked upon when wet. (3)		

<sup>(M)</sup> The permissible deviation, in % or mm, of the average size for each tile (2 or 4 sides) from work size (WS).  
<sup>(\*\*)</sup> The permissible deviation, in % or mm, of the average thickness for each tile from the work size thickness (WS).  
<sup>(\*\*\*)</sup> The maximum permissible deviation from straightness, in % or mm, related to the corresponding work sizes (WS).  
<sup>(\*\*\*\*)</sup> The maximum permissible deviation from rectangularity, in % or mm, related to the corresponding work sizes (WS).  
c.c. The maximum permissible deviation from centre curvature, in % or mm, related to diagonal calculated from the work sizes (WS).  
e.c. The maximum permissible deviation from edge curvature, in % or mm, related to the corresponding work sizes (WS).  
w. The maximum permissible deviation from warpage, in % or mm, related to diagonal calculated from the work sizes (WS).  
(1). Determination of slip resistance of pedestrian surfaces; it does not cover sports surfaces and road surfaces for vehicles (skid resistance).  
(2). Anti-slip performance is guaranteed at the time of delivery of the product.  
(3). However, tiles with a DCOF of 0.42 or greater are not necessarily suitable for all projects. The specifier shall determine tiles appropriate for specific project conditions, considering by way of example, but not in limitation, type of use, traffic, expected contaminants, expected maintenance, expected wear, and manufacturers' guidelines and recommendations.  
(4). For further details, please refer to outdoor design general catalogue.  
(5). Only for products with 20 mm thickness.  
(6). PTV ≥ 36 Wet on demand  
(7). P3 on demand  
(8). C2 on demand

Boost Floor design			
Matte	120x278 cm ± 6 mm	Grip	Outdoor Paving ± 20 mm
± 0,3% ± 1,0 mm	± 0,3% ± 1,0 mm	± 0,3% ± 1,0 mm	± 0,3% ± 1,0 mm
± 5,0% ± 0,5 mm	± 5,0% ± 0,5 mm	± 5,0% ± 0,5 mm	± 5,0% ± 0,5 mm
± 0,3% ± 0,8 mm	± 0,3% ± 0,8 mm	± 0,3% ± 0,8 mm	± 0,3% ± 0,8 mm
± 0,3% ± 1,5 mm	± 0,3% ± 1,5 mm	± 0,3% ± 1,5 mm	± 0,3% ± 1,5 mm
± 0,4% ± 1,8 mm	± 0,3% ± 1,5 mm	± 0,4% ± 1,8 mm	± 0,4% ± 1,8 mm
≤ 0,1%	≤ 0,1%	≤ 0,1%	≤ 0,1%
≤ 0,5%	≤ 0,5%	≤ 0,5%	≤ 0,5%
S ≥ 1500 N R ≥ 40 N/mm <sup>2</sup>	S ≥ 1000 N R ≥ 40 N/mm <sup>2</sup>	S ≥ 1500 N R ≥ 40 N/mm <sup>2</sup>	S ≥ 10000 N R ≥ 45 N/mm <sup>2</sup> T1 120x120, ≥ U4 90x90, ≥ U4 60x120
-	-	-	-
≥ 0,55	≥ 0,55	≥ 0,55	≥ 0,55
6	6	8	8
≤ 150 mm <sup>3</sup>	≤ 150 mm <sup>3</sup>	≤ 150 mm <sup>3</sup>	≤ 150 mm <sup>3</sup>
≤ 7 MK <sup>-1</sup>	≤ 7 MK <sup>-1</sup>	≤ 7 MK <sup>-1</sup>	≤ 7 MK <sup>-1</sup>
Resistant	Resistant	Resistant	Resistant
≤ 0,01% (0,1mm/m)	≤ 0,01% (0,1mm/m)	≤ 0,01% (0,1mm/m)	≤ 0,01% (0,1mm/m)
Resistant	Resistant	Resistant	Resistant
≥ 1,0 N/mm <sup>2</sup> (Class C2 - EN 12004)	≥ 1,0 N/mm <sup>2</sup> (Class C2 - EN 12004)	≥ 1,0 N/mm <sup>2</sup> (Class C2 - EN 12004)	≥ 1,0 N/mm <sup>2</sup> (Class C2 - EN 12004)
A1 - A1 <sub>n</sub>	A1 - A1 <sub>n</sub>	A1 - A1 <sub>n</sub>	A1 - A1 <sub>n</sub>
A	A	A	A
LA	LA	LA	LA
HA	HA	HA	HA
5	5	5	5
R10	R9	R11	R11
A+B	A	A+B+C	A+B+C
≥ 36 Dry ≥ 36 Wet	(●)	≥ 36 Dry ≥ 36 Wet	≥ 36 Dry ≥ 36 Wet
Class P3	(●●)	Class P4	Class P4
Class C2	(●●●)	Class C3	Class C3
> 0,40 Asciutto > 0,40 Bagnato	> 0,40 Asciutto > 0,40 Bagnato	> 0,40 Asciutto > 0,40 Bagnato	> 0,40 Asciutto > 0,40 Bagnato
> 0,42 Wet	> 0,42 Wet	> 0,42 Wet	> 0,42 Wet