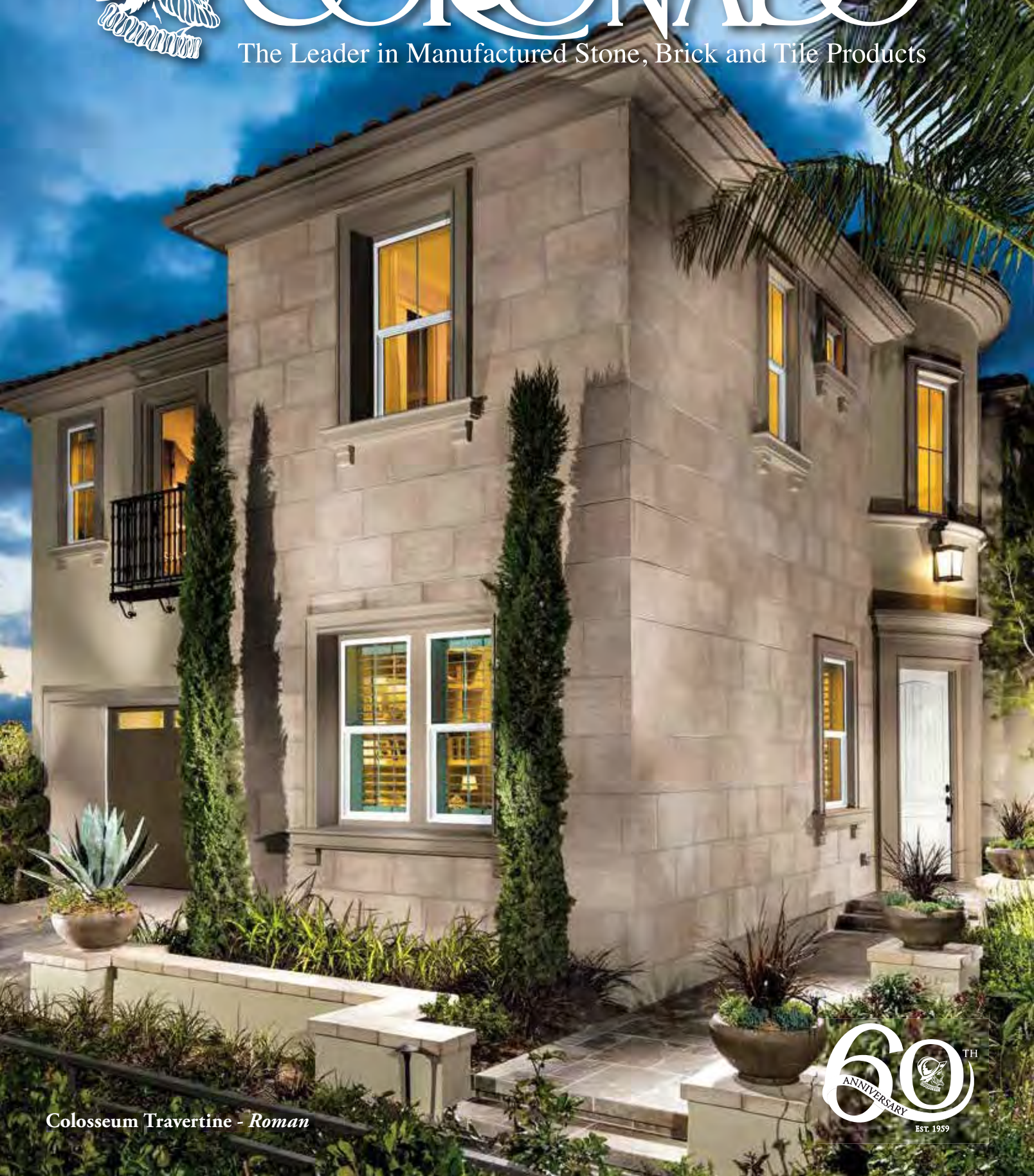




CORONADO[®]

The Leader in Manufactured Stone, Brick and Tile Products



Colosseum Travertine - Roman



TABLE OF CONTENTS



Sonora Sandstone
Blue Heron



Smooth Limestone
Cream



Barn WoodStone
Rustic Farmhouse



Italian Villa®
Volterra



Weathered Edge
Coal Canyon

NEW PRODUCTS

Urbana Smooth	1
Urbana Split	2
Sonora Sandstone	3
Element Ledgestone	4

THE CLASSIC SERIES

8" Classic Jerusalem	7
Smooth Limestone	8
French Limestone	9
Chiseled Limestone	10
Hill Country Limestone	11
Colosseum Travertine	12
Aegean Coral, Caribbean Coral	13
The Getty Stone	14
Sand Canyon Flagstone	15
Decorative Bands	16

WOODSTONE SERIES

Barn WoodStone	19
Rough Cut WoodStone	20
Refined WoodStone	21 - 22

THE DESIGNER SERIES

Playa Vista Limestone	25
Amalfi Ledge	26
3" Split Limestone	27
6" Split Limestone	28
Prairie Stone	29
Industrial Ledge	30

CUT STONE SERIES

Pavilion Stone	31 - 32
Canyon Cobble	33
Osage	34

VILLA STONE SERIES

Venetian Villa®	37 - 38
Italian Villa®	39 - 40
Tuscan Villa®	41 - 42
French Country Villa®	43 - 44

LEDGESTONE SERIES

Mountain Strip Stone	47
Coronado Strip Stone	48
Pro-Ledge®	49 - 50
Coronado Honey Ledge	51 - 52
Sawtooth Ledge	53
Artisan Ledge	54
Quick Stack®	55 - 56
Virginia Ledge	57
Sierra Ledge	58
Eastern Mountain Ledge®	59 - 60



Country Rubble
Aspen



Minnesota Fieldstone
Coastal Brown



Special Used Brick
Rustic Blend



Brick Corner
Rustic Blend



Flagstone Wall Cap
Lompoc

TABLE OF CONTENTS

LEDGESTONE SERIES CONT.

Old World Ledge	61 - 62
Old Country Ledge	63 - 64
Rocky Mountain Ledge	65
Canyon Ledge	66
Idaho Drystack	67 - 68
Weathered Edge	69 - 70

ASHLAR & RUBBLE SERIES

Country Rubble	73 - 74
Texas Rubble	75
Carolina Rubble	76
English Rubble	77 - 78
Santa Barbara	79 - 80
Country Castle	81
Belgian Castle	82

IRREGULAR SHAPED STONE SERIES

Minnesota Fieldstone	85 - 86
Appalachian Fieldstone	87 - 88
Split Fieldstone	89
Viejo Ranch	90
River Rock	91
Creek Rock	92

STONE COMBINATIONS

Stone Combinations	95 - 96
--------------------	---------

THIN BRICK SERIES

Sand Mold Brick	99
Belgian Brick	100
Special Used Brick	101 - 102
Sculptured Brick	103
Clinker Brick	104
Wirecut Brick	105 - 106
Sicilian Brick	107
Roman Brick	108
Weathered Brick	109
New England Brick	110
Adobe Brick	111 - 112

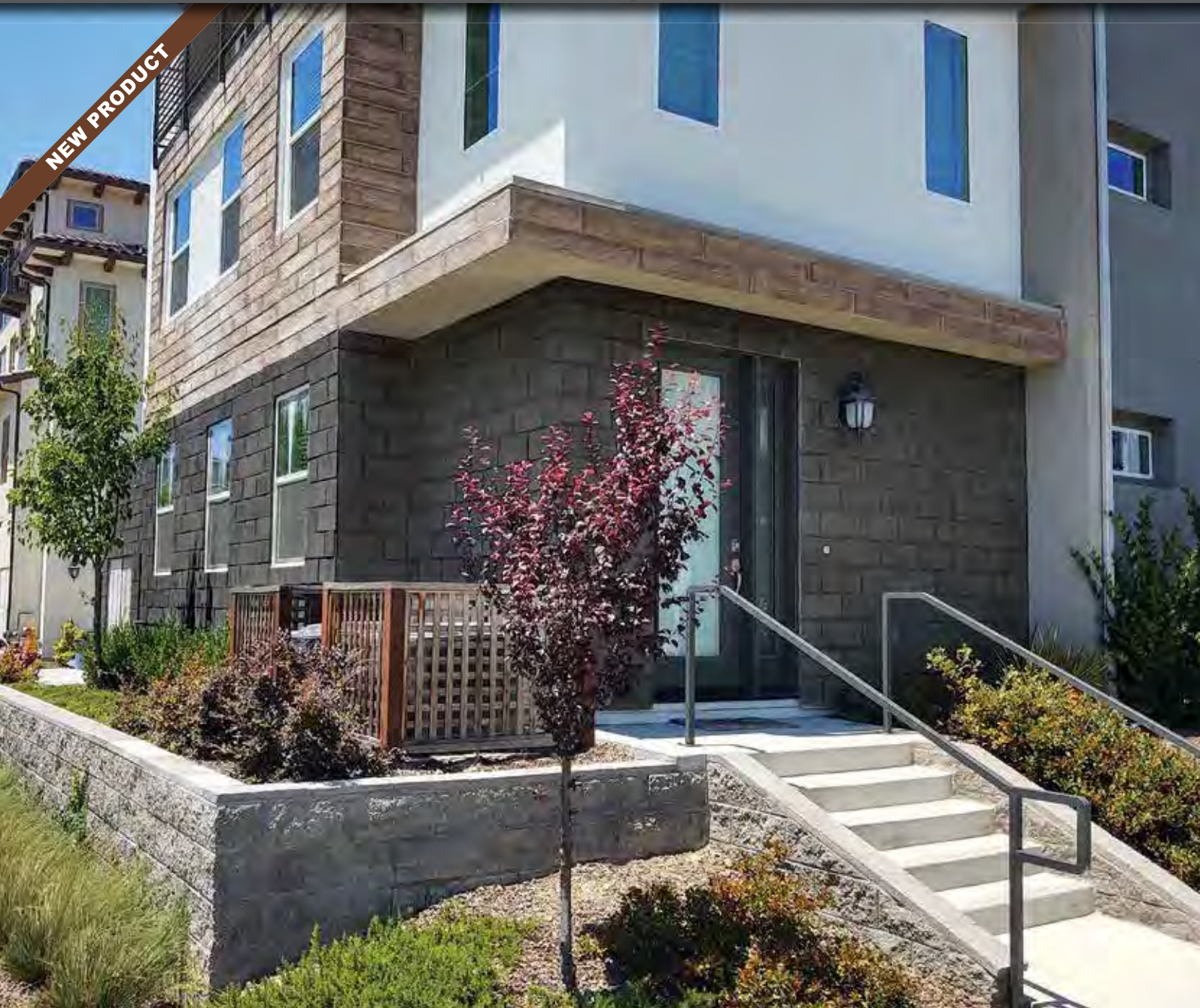
TRIM & ACCESSORIES

Sills, Lintels & Mantels	115
Window Stones, Trim Stones, Hearthstones & Boxes	116
Wall Caps & Post Caps	117
Brick Accessories	118
Grouting Options	119 - 120

TECHNICAL DATA

Technical Data	123 - 124
Coronado Stone Sizes	125
Stone Color Index & Project Image Credits	126
Limited Warranty	127
Nationwide Manufacturing	128

NEW PRODUCT



Urbana Smooth - Smoke (Also Shown Refined WoodStone - Red Oak)

NEW PRODUCT



Urbana Split - Grey Granite



Urbana Smooth
French White



Urbana Smooth
Country Beige



Urbana Smooth
Silver Ash



Urbana Split
Silver Ash



Urbana Split
Country Beige



Urbana Split
French White

NEW PRODUCT

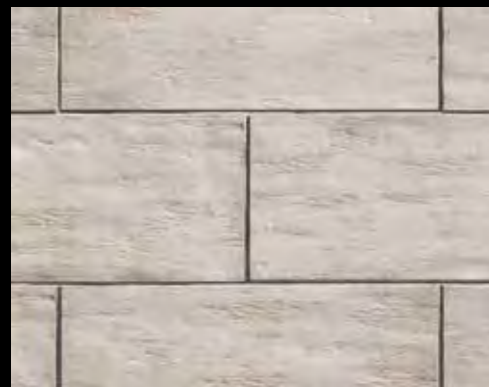


Sonora Sandstone - *Blue Heron*

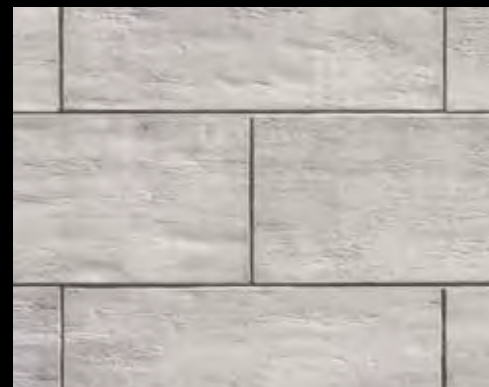
NEW PRODUCT



Element Ledgestone - *Silver Ash*



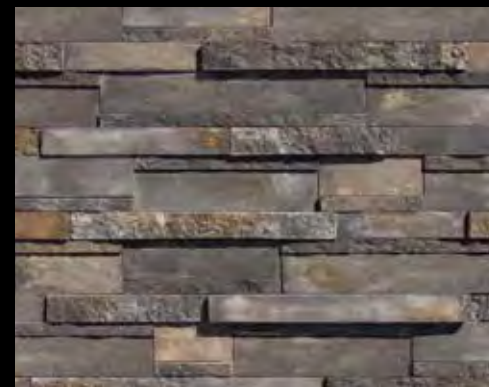
Sonora Sandstone
French White



Sonora Sandstone
Silver Ash



Sonora Sandstone
Palomar Blend



Element Ledgestone
Mount Vernon



Element Ledgestone
Northland



Element Ledgestone
White



THE CLASSIC SERIES

These alluring oversized tiles were created to mimic the elegant stone adorning some of the most stunning architectural wonders of the world. The exquisite textures included in this series range from finely detailed limestone to deeply eroded travertine. Each profile flows well with both Classical and Modern design styles.

12" x 24" Chiseled Limestone - *Cream*
16" x 24" Colosseum Travertine - *Harvard Grey*
16" x 24" Colosseum Travertine - *Roman*



8" Classic Jerusalem - Sabara Beige



Smooth Limestone - Cream



8" Classic Jerusalem
Silver Ash



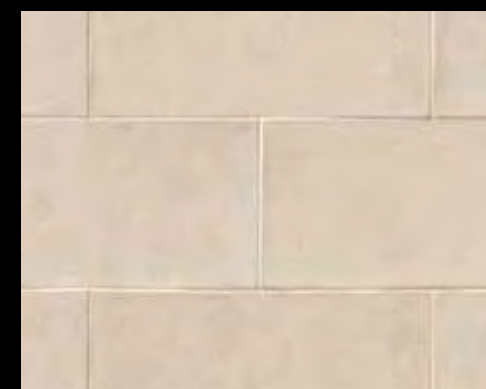
8" Classic Jerusalem
Sabara Beige



8" Classic Jerusalem
Cayenne



Smooth Limestone
Harvard Grey



Smooth Limestone
Cream



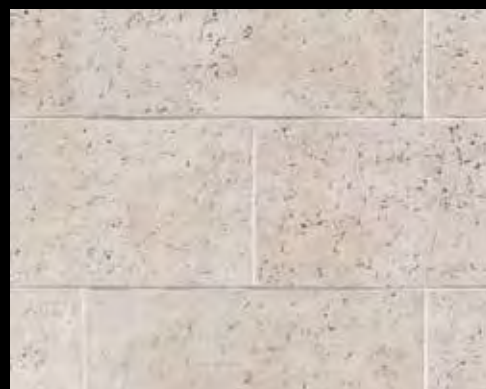
Smooth Limestone
White Sands



French Limestone - Country Beige



Chiseled Limestone - Cream



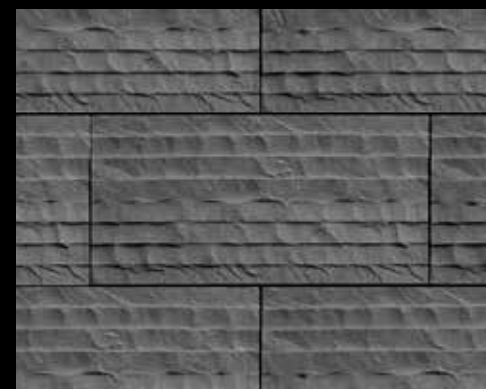
*French Limestone
French White*



*French Limestone
Country Beige*



*French Limestone
Black Forest*



*Chiseled Limestone
Black Forest*



*Chiseled Limestone
Silver Ash*



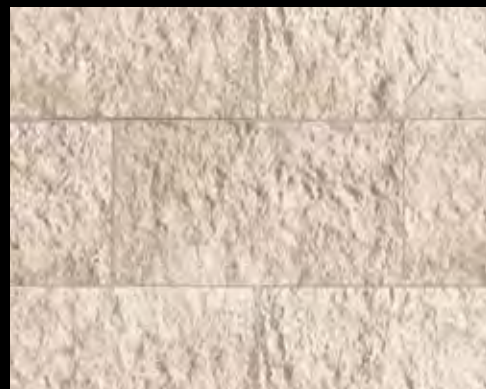
*Chiseled Limestone
Cream*



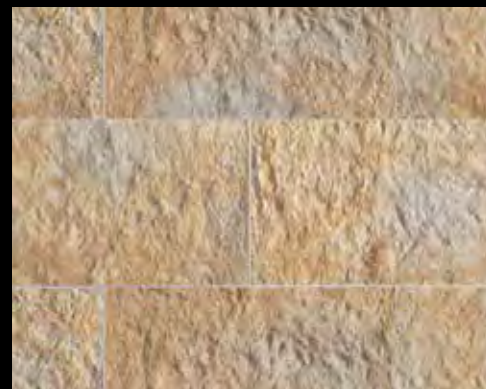
Hill Country Limestone - *Bandera*



Colosseum Travertine - *Roman*



Hill Country Limestone
Cream



Hill Country Limestone
Bandera



Hill Country Limestone
Silver Ash



Colosseum Travertine
Roman



Colosseum Travertine
Timber Trail



Colosseum Travertine
Black Forest



Caribbean Coral - Santorini Blend (Ashlar Pattern)



The Getty Stone - Embassy Blend



Caribbean Coral
Barbados (Ashlar Pattern)



Aegean Coral
Santorini Blend (Coursed Pattern)



Aegean Coral
White Sands (Coursed Pattern)



The Getty Stone
Embassy Blend



The Getty Stone
Silver Ash



The Getty Stone
Black Forest



Sand Canyon Flagstone - *Amber Glow*



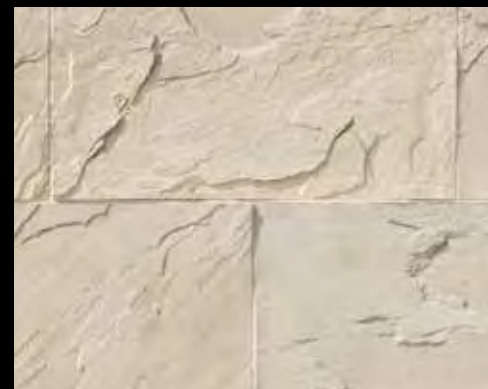
Chiseled Limestone - *Cream* with 4" Chiseled Limestone Band - *Silver Ash*



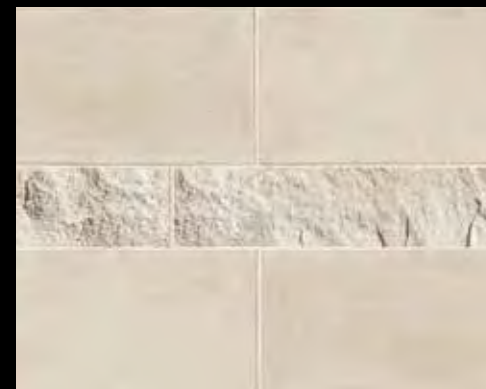
Sand Canyon Flagstone
Palomar Blend



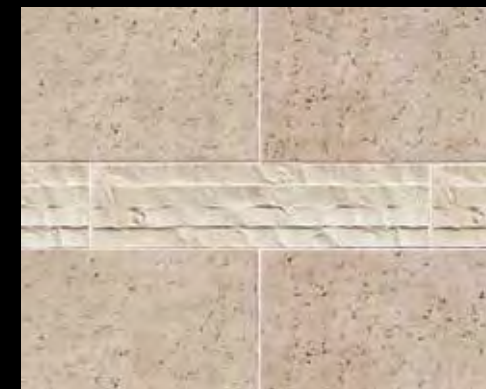
Sand Canyon Flagstone
Desert Beige



Sand Canyon Flagstone
Cream



Smooth Limestone - *Cream*
6" Split Limestone - *Cream*



French Limestone - *Country Beige*
6" Chiseled Limestone - *Cream*



French Limestone - *Cream*
6" Smooth Limestone - *Cream*



WOODSTONE SERIES

The WoodStone Series features three distinct textures that replicate the look and feel of natural wood. This durable thin concrete veneer is fire resistant and extremely cost effective when compared to its natural alternative.

Barn WoodStone - Rustic Farmhouse



Barn WoodStone - *Spring Harvest*



Rough Cut WoodStone - *Deadwood*



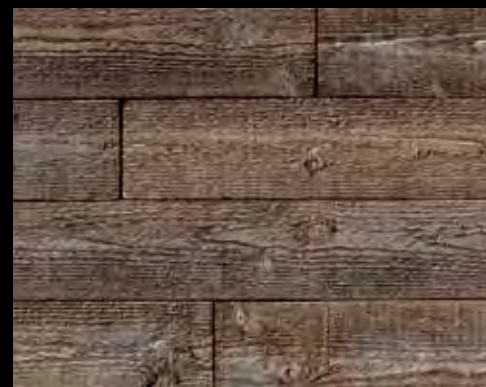
Barn WoodStone
Rustic Farmhouse



Barn WoodStone
Cannery Blend



Barn WoodStone
Old Frontier



Rough Cut WoodStone
Rustic Cedar



Rough Cut WoodStone
Cedar



Rough Cut WoodStone
Antique White



Refined WoodStone - *Red Oak*



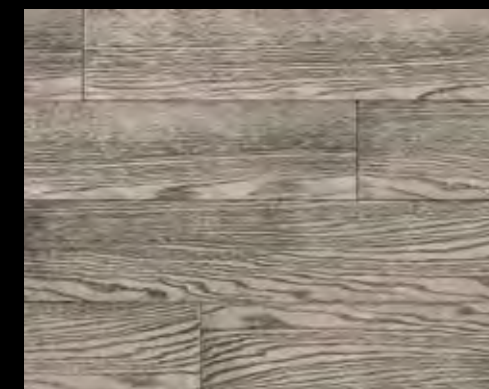
Refined WoodStone - *Blackened Oak*



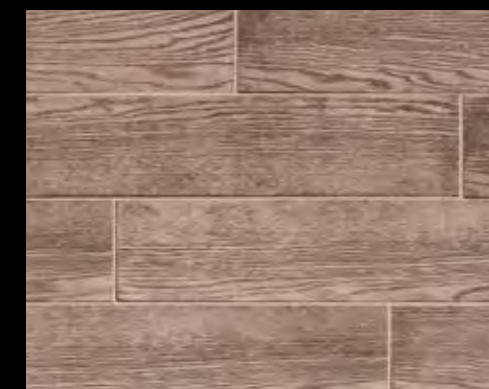
Refined WoodStone - *Antique White*



Refined WoodStone
Blackened Oak



Refined WoodStone
Deadwood



Refined WoodStone
Red Oak



THE DESIGNER SERIES

This unique series contains a variety of stylish modern profiles. These sleek, highly-textured veneers were created for the designer looking to add a touch of minimalistic style to their project. The continuous linear patterns compliment both modern and contemporary architectural designs.

Playa Vista Limestone - *Cream*



Playa Vista Limestone - *Black Forest (Ashlar Pattern)*



Amalfi Ledge - *Salerno*



Playa Vista Limestone
Walnut (Coursed Pattern)



Playa Vista Limestone
Alaskan Sunset (Coursed Pattern)



Playa Vista Limestone
Cream (Coursed Pattern)



Amalfi Ledge
Ravello



Amalfi Ledge
Pompeii



Amalfi Ledge
Marianna



3" Split Limestone - *Genoa Sands*



6" Split Limestone - *Genoa Sands*



3" Split Limestone
White



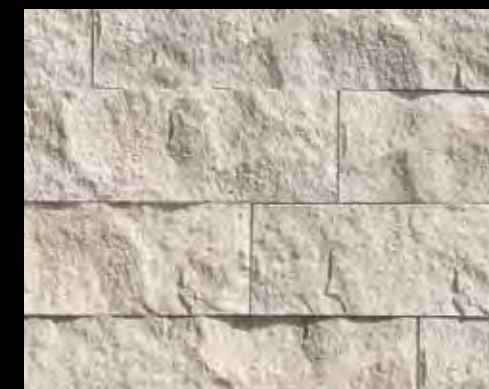
3" Split Limestone
Walnut



3" Split Limestone
Grey



6" Split Limestone
Summit Grey



6" Split Limestone
Cream



6" Split Limestone
White



Prairie Stone - Grey Granite



Industrial Ledge - Shale Grey



Prairie Stone
Latte



Prairie Stone
Mocha Granite



Prairie Stone
Smoke



Industrial Ledge
Blackened Oak



Industrial Ledge
Shale Grey



Industrial Ledge
Oakbrook



CUT STONE SERIES

The Cut Series features a variety of profiles that replicate the look of natural thin-cut veneer selected from quarries across North America. The gorgeous natural textures and rich color hues highlight the inherent beauty that make these stone veneer styles so desirable within the design community.

Pavilion Stone - Pine Creek



Canyon Cobble - Indian Springs



Osage - Fossil Bay



Canyon Cobble
Wind River



Canyon Cobble
Saratoga Springs



Canyon Cobble
Desert Sunset



Osage
Dakota Brown



Osage
Cape Cod Grey



Osage
Ancient Reef



VILLA STONE SERIES

We searched up and down the Mediterranean coast to find the perfect blend of stone shapes and textures that embodied European old world architecture. Our Villa Stone profiles exemplify the unique characteristics of some of the most sought after types of stone adorning villas and chateaus across Europe.

French Country Villa® - Bordeaux



Venetian Villa® - Texas Cream (Dry Stacked)



Venetian Villa® - Madison County (Grouted)



Venetian Villa®
Versailles (Grouted)



Venetian Villa®
Sunset Blend (Grouted)



Venetian Villa®
Dakota Brown (Grouted)



Venetian Villa®
Madison County (Grouted)



Venetian Villa®
Grey (Grouted)



Venetian Villa®
Palazzo (Dry Stacked)

Square foot coverage is based on installation with a 1/2" mortar joint.
Other colors are available for this profile.



Italian Villa® - Provo Canyon Grey



Italian Villa® - Volterra



Italian Villa®
Provo Canyon Grey



Italian Villa®
Verona



Italian Villa®
Aspen



Italian Villa® - Volterra



Italian Villa®
Dakota Brown



Italian Villa®
Volterra



Italian Villa®
Portabella



Tuscan Villa® - Florentine



Tuscan Villa® - Prairie Moss



Tuscan Villa®
Monarch



Tuscan Villa®
Seville



Tuscan Villa®
Florentine



Tuscan Villa®
Coal



Tuscan Villa®
Prairie Moss



Tuscan Villa®
Romano



French Country Villa® - Volterra



French Country Villa® - Versailles



French Country Villa®
Bordeaux



French Country Villa®
Champagne



French Country Villa®
Verona



French Country Villa®
Carmel Mountain



French Country Villa®
Chablis



French Country Villa®
Grey Quartzite



LEDGESTONE SERIES

We feature a vast selection of ledgerstone profiles which replicate some of the most beautiful quarried ledgerstones from around the country. Choose from a wide array of shapes, sizes and colors to compliment any architectural project, ranging from rustic to contemporary in style.

Idaho Drystack - Smokey Grey



Mountain Strip Stone - Renaissance Blend



Coronado Strip Stone - Fawn



Mountain Strip Stone Brookside



Mountain Strip Stone Chablis



Mountain Strip Stone Cape Cod Grey



Coronado Strip Stone Black Forest



Coronado Strip Stone Dakota Brown



Coronado Strip Stone Fawn



Pro-Ledge® - Black Forest



Pro-Ledge® - Brookside



Pro-Ledge®
Oakbrook



Pro-Ledge®
Huron



Pro-Ledge®
Brookside



Pro-Ledge® - White



Pro-Ledge®
Black Forest



Pro-Ledge®
Grey Quartzite



Pro-Ledge®
Chablis



Coronado Honey Ledge - Carmel Mountain



Coronado Honey Ledge - Shasta



Coronado Honey Ledge Shasta



Coronado Honey Ledge Grey Quartzite



Coronado Honey Ledge Huron



Coronado Honey Ledge Golden Harvest



Coronado Honey Ledge Chablis



Coronado Honey Ledge Sioux Falls



Coronado Honey Ledge Four Rivers



Coronado Honey Ledge Carmel Mountain



Coronado Honey Ledge Rocky Mountain Rundle



Sawtooth Ledge - *Silver Ash*



Artisan Ledge - *Cypress Point*



Sawtooth Ledge
Northland



Sawtooth Ledge
Mount Vernon



Sawtooth Ledge
Smoke



Artisan Ledge
Huron



Artisan Ledge
Falmouth



Artisan Ledge
Smoke



Quick Stack® - Cape Cod Grey



Quick Stack® - Carmel Mountain



Quick Stack®
Cape Cod Grey



Quick Stack®
Carmel Mountain



Quick Stack® - English Grey



Quick Stack®
Cathedral Grey



Quick Stack®
Coastal Brown



Quick Stack®
Aspen



Virginia Ledge - *Cape Cod Grey*



Sierra Ledge - *Bourbon Creek*



Virginia Ledge
Golden Sand



Virginia Ledge
Coastal Brown



Virginia Ledge
Aspen



Sierra Ledge
Brookside



Sierra Ledge
Falmouth



Sierra Ledge
Cathedral Grey



Eastern Mountain Ledge® - *Dakota Brown*



Eastern Mountain Ledge® - *Carmel Mountain*



Eastern Mountain Ledge®
Brookside



Eastern Mountain Ledge®
Wheat



Eastern Mountain Ledge®
Grey Quartzite



Eastern Mountain Ledge®
Saginaw



Eastern Mountain Ledge®
Provo Canyon Grey



Eastern Mountain Ledge®
Carmel Mountain



Eastern Mountain Ledge®
Chablis



Eastern Mountain Ledge®
Madison County



Eastern Mountain Ledge®
Dakota Brown



Eastern Mountain Ledge®
Coastal Brown



Eastern Mountain Ledge®
Aspen



Eastern Mountain Ledge®
Huron



Old World Ledge - *Sunset Blend (Grouted)*



Old World Ledge - *Charleston (Dry Stacked)*



Old World Ledge
Antique Cream (Dry Stacked)



Old World Ledge
Burnt Oak (Dry Stacked)



Old World Ledge
Grey Quartzite (Grouted)



Old World Ledge
Etowah (Dry Stacked)



Old World Ledge
Chablis (Dry Stacked)



Old World Ledge
Birch Grove (Dry Stacked)



Old World Ledge
Monarch (Dry Stacked)



Old World Ledge
Huron (Dry Stacked)



Old World Ledge
Brookside (Grouted)



Old Country Ledge - Huron (Grouted)



Old Country Ledge - Carmel Mountain (Dry Stacked)



Old Country Ledge
Madison County (Grouted)



Old Country Ledge
Chablis (Dry Stacked)



Old Country Ledge
Aspen (Grouted)



Old Country Ledge
Shasta (Dry Stacked)



Old Country Ledge
Grey Quartzite (Grouted)



Old Country Ledge
Banff (Dry Stacked)



Old Country Ledge
Dakota Brown (Dry Stacked)



Old Country Ledge
Coastal Brown (Grouted)



Old Country Ledge
Carmel Mountain (Grouted)



**Rocky Mountain Ledge
Copper Canyon (Dry Stacked)**



**Rocky Mountain Ledge
Meadow Springs (Dry Stacked)**



**Rocky Mountain Ledge
Sandy Peaks (Dry Stacked)**



Rocky Mountain Ledge - Copper Canyon (Dry Stacked)



Canyon Ledge - Dakota Brown (Grouted)



**Rocky Mountain Ledge
Bitterroot (Grouted)**



**Rocky Mountain Ledge
Greycliffe (Dry Stacked)**



**Rocky Mountain Ledge
Black Rundle (Dry Stacked)**



**Canyon Ledge
Cape Cod Grey (Dry Stacked)**



**Canyon Ledge
Sunset Blend (Dry Stacked)**



**Canyon Ledge
Brookside (Dry Stacked)**



Idaho Drystack - *Antique Buff*



Idaho Drystack - *Carmel Mountain*



Idaho Drystack
Antique Buff



Idaho Drystack
Grey Quartzite



Idaho Drystack
Cape Cod Grey



Idaho Drystack
Aspen



Idaho Drystack
Chablis



Idaho Drystack
Carmel Mountain

Square foot coverage is based on installation with tightly-fitted joints.
Other colors are available for this profile.



Weathered Edge - *Coal Canyon*



Weathered Edge - *Sunhill Blend*



Weathered Edge
Foxhill Blend



Weathered Edge
Sunhill Blend



Weathered Edge
Wisconsin Blend



Weathered Edge - *Chablis*



Weathered Edge
Coal Canyon



Weathered Edge
Aspen



Weathered Edge
Chablis



ASHLAR & RUBBLE SERIES

The skillfully handcrafted stones from this series can be traced back to times when artisan masons meticulously chiseled blocks of limestone to construct majestic structures. These magnificent stone profiles possess wonderfully sculpted textures and can be installed in an ashlar or coursed pattern.

Country Rubble - Lompoc



Country Rubble - Grey Quartzite (Dry Stacked)



Country Rubble - Aspen (Grouted)



Country Rubble
Antique Cream (Dry Stacked)



Country Rubble
Texas Cream (Grouted)



Country Rubble
Sunset Blend (Dry Stacked)



Country Rubble
Coastal Brown (Dry Stacked)



Country Rubble
Golden Brown (Dry Stacked)



Country Rubble
Grey Quartzite (Grouted)



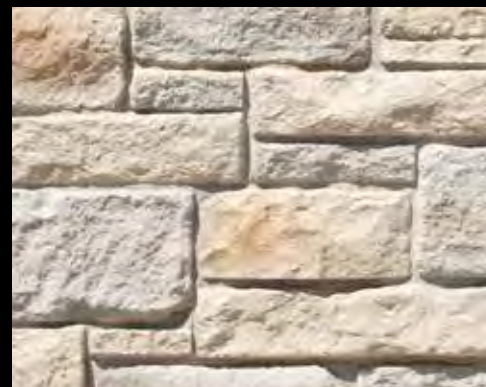
Texas Rubble - *Texas Cream*



Carolina Rubble - *Sandstone*



Texas Rubble
Antique Cream



Texas Rubble
Texas Cream



Texas Rubble
Carmel Mountain



Carolina Rubble
Dakota Brown



Carolina Rubble
Grey Quartzite

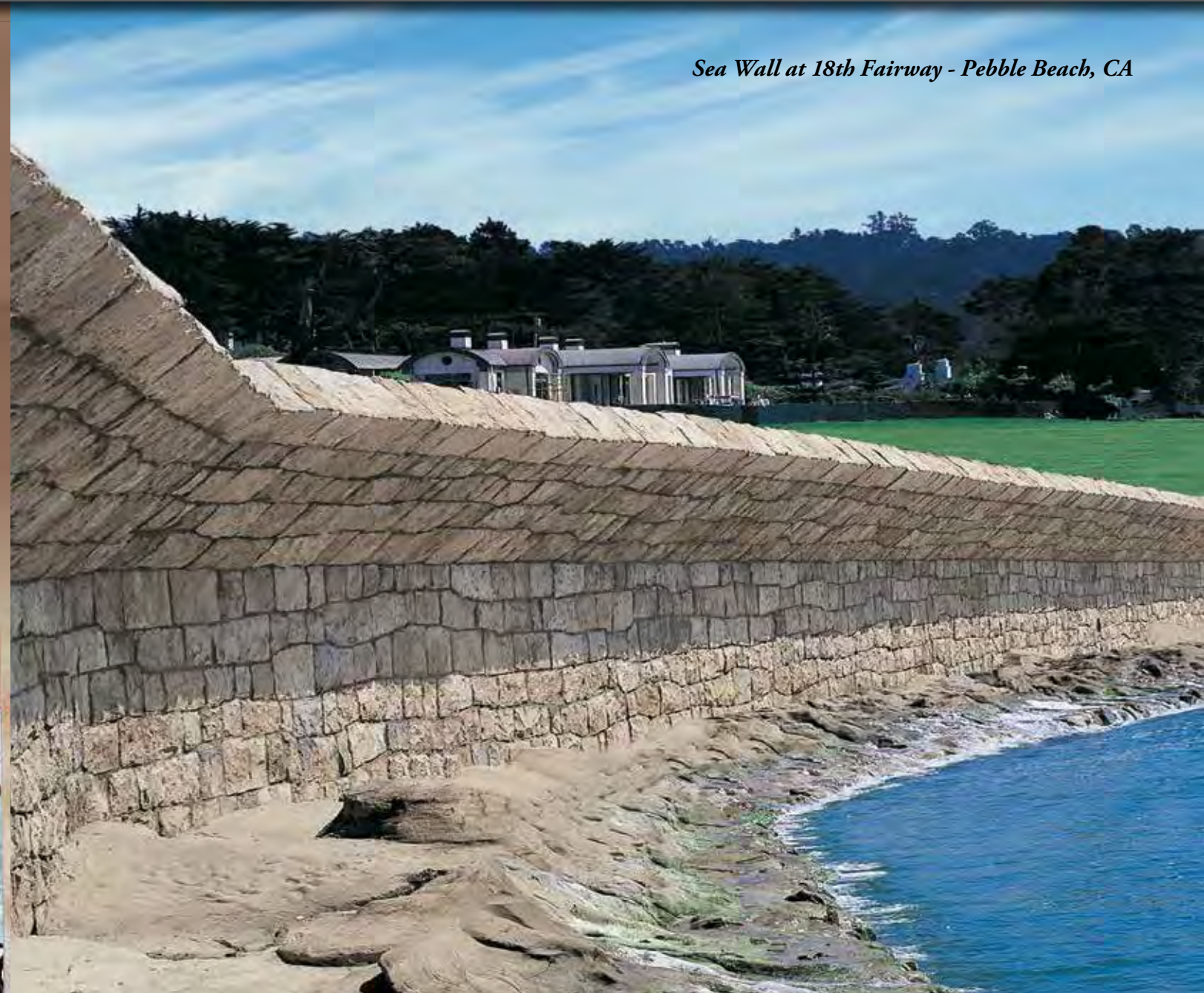


Carolina Rubble
Aspen

Square foot coverage is based on installation with a 1/2" mortar joint.
Other colors are available for this profile.



English Rubble - *Dakota Brown*



Sea Wall at 18th Fairway - Pebble Beach, CA

English Rubble - *Pebble Beach Blend*



English Rubble
Black Hills



English Rubble
Dakota Brown



English Rubble
Newport Sandstone



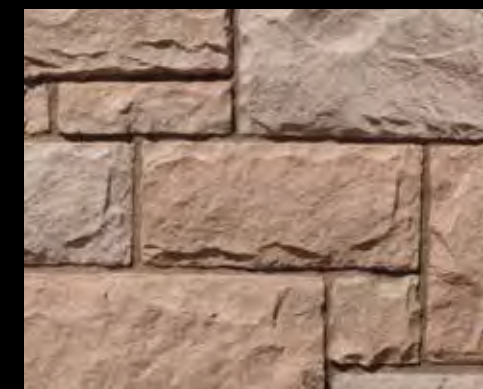
Santa Barbara - Sand Dune (Coursed Pattern)



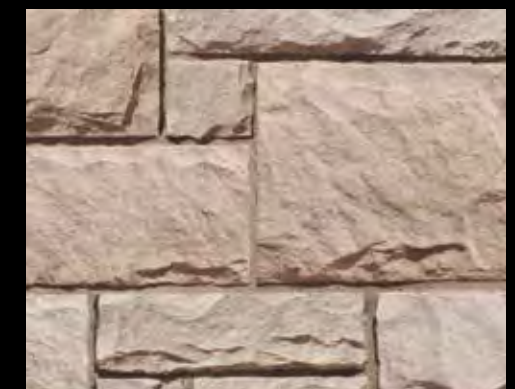
Santa Barbara - Brookshire (Ashlar Pattern)



Santa Barbara
English Grey (Ashlar Pattern)



Santa Barbara
Sand Dune (Ashlar Pattern)



Santa Barbara
Brookshire (Ashlar Pattern)



Country Castle - Lompoc (Grouted)



Belgian Castle - Dakota Brown (Grouted)



Country Castle
Dakota Brown (Grouted)



Country Castle
Chablis (Grouted)



Country Castle
Madison County (Grouted)



Belgian Castle
Black Forest (Dry Stacked)



Belgian Castle
Chablis (Grouted)



Belgian Castle
Brookside (Dry Stacked)



IRREGULAR SHAPED STONE SERIES

The irregular shaped stones shown in this series replicate a diverse group of fieldstones and river rocks that are native to the Eastern United States. These stones feature textures forged by millions of years of erosion, and a color palette of rich earthy hues that blend seamlessly with outdoor environments.

Appalachian Fieldstone - Bourbon



Minnesota Fieldstone - *Dakota Brown*



Minnesota Fieldstone - *Coastal Brown*



Minnesota Fieldstone
Grey Quartzite



Minnesota Fieldstone
Carmel Mountain



Minnesota Fieldstone
Dakota Brown



Minnesota Fieldstone
Chablis



Minnesota Fieldstone
Aspen



Minnesota Fieldstone
Huron

Square foot coverage is based on installation with a 1/2" mortar joint.
Other colors are available for this profile.



Appalachian Fieldstone - *Mountain Sunset*



Appalachian Fieldstone - *Grey Quartzite*



Appalachian Fieldstone
Naples



Appalachian Fieldstone
Mountain Sunset



Appalachian Fieldstone
Madison County



Appalachian Fieldstone
Dakota Brown



Split Fieldstone - *Carmel Mountain*



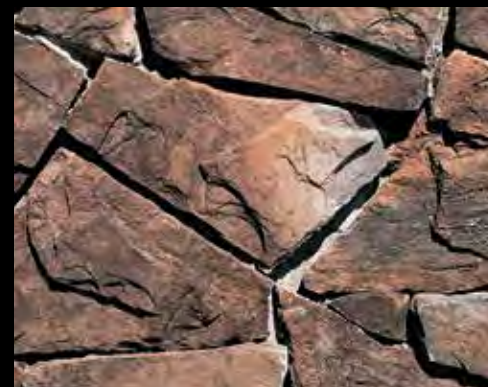
Viejo Ranch - *Viejo Blend*



Split Fieldstone
Lompoc



Split Fieldstone
Silver Grey



Split Fieldstone
Dakota Brown



River Rock - Seaside



Creek Rock - Southwest Blend



River Rock
Reno Blend



River Rock
Sienna Brown



River Rock
Desert Rust



Creek Rock
Apache Brown



Creek Rock
Calico Sand



Creek Rock
Palm Springs Blend



STONE COMBINATIONS

Multiple stone veneer styles and colors can be combined to create a custom appearance. Varying the percentage of each profile allows designers to create drastically different looks, which enables further refinement of the style they are trying to achieve.

70% Eastern Mountain Ledge® - *Coastal Brown*
30% Minnesota Fieldstone - *Coastal Brown*



50% Italian Villa - Verona
50% Tuscan Villa - Florentine



70% Eastern Mountain Ledge - Carmel Mountain
30% Minnesota Fieldstone - Carmel Mountain



50% Minnesota Field. - Grey Quartzite
50% Tumbled Ledge - Grey Quartzite



80% Minnesota Field. - Wheat & Chestnut
20% Eastern Mtn. Ledge - Wheat & Chestnut



80% Eastern Mtn. Ledge - Dakota Brown
20% Appalachian Field. - Dakota Brown



50% Eastern Mtn. Ledge - Madison County
50% Appalachian Field. - Madison County



70% Eastern Mtn. Ledge - Carmel Mtn.
30% Minnesota Field. - Wisconsin Blend



70% Split Fieldstone - Lompoc
30% Eastern Mtn. Ledge - Lompoc

Square foot coverage varies depending on selected profile.
Other colors are available for each of these profiles.



THIN BRICK SERIES

We offer a range of thin brick products that come in a wide variety of sizes, textures and colors. Projects can be enhanced with the alluring look and feel of full bed-depth brick without the need for additional wall tie support that standard brick installations require.

Adobe Brick - Sienna with Mortar Wash

NEW PRODUCT



2 3/4" x 8 3/4" Sand Mold Brick - *Savannah Grey*



2 1/2" x 8" Belgian Brick - *Brookside*



2 3/4" x 8 3/4" Sand Mold Brick
Old Colonial



2 3/4" x 8 3/4" Sand Mold Brick
Cottonwood



2 3/4" x 8 3/4" Sand Mold Brick
Barnacle



2 1/2" x 8" Belgian Brick
Bear Creek



2 1/2" x 8" Belgian Brick
Light Grey



2 1/2" x 8" Belgian Brick
Brookside



2 1/2" x 8" Special Used Brick - *Eagle Buff*



2 1/2" x 8" Special Used Brick - *Rustic Blend*



2 1/2" x 8" Special Used Brick
Bear Creek



2 1/2" x 8" Special Used Brick
Wolf Grey



2 1/2" x 8" Special Used Brick
Eagle Buff



2 1/2" x 8" Special Used Brick
Country



2 1/2" x 8" Special Used Brick
Rustic Blend



2 1/2" x 8" Special Used Brick
Glacier

Square foot coverage is based on installation with a 1/2" mortar joint.
Other colors are available for this profile.



2½" x 8" Sculptured Brick - *Eagle Buff*



2½" x 8" Clinker Brick - *Brown Blend*



2½" x 8" Sculptured Brick
Rustic Blend



2½" x 8" Sculptured Brick
Aspen



2½" x 8" Sculptured Brick
Wheat



2½" x 8" Clinker Brick
Eagle Buff



2½" x 8" Clinker Brick
Brown Blend



2½" x 8" Clinker Brick
Antique Red



2 1/2" x 8" Wirecut Brick - Wolf Grey



4" x 12" Oversized Wirecut Brick - Old Chicago



2 1/2" x 8" Wirecut Brick - Spectrum



2 1/2" x 8" Wirecut Brick
La Jolla Blend



2 1/2" x 8" Wirecut Brick
Iceberg



2 1/2" x 8" Wirecut Brick
Wolf Grey



2 1/2" x 8" Sicilian Brick - Ferrara Blend



2 1/4" x 10" Roman Brick - Mezzano



2 1/2" x 8" Sicilian Brick
Ferrara Blend



2 1/2" x 8" Sicilian Brick
Marsala Blend



2 1/2" x 8" Sicilian Brick
Monreale



2 1/4" x 10" Roman Brick
Mezzano



2 1/4" x 10" Roman Brick
Sorano



2 1/4" x 10" Roman Brick
Ambrosia



3" x 10" Weathered Brick - *Carmel Mountain*



3" x 10" New England Brick - *Charleston*



3" x 10" Weathered Brick
Carmel Mountain



3" x 10" Weathered Brick
Antique Red



3" x 10" Weathered Brick
Savannah



3" x 10" New England Brick
Charleston



3" x 10" New England Brick
Dakota Brown



3" x 10" New England Brick
Bear Creek



4" x 16" Adobe Brick - Haystack



4" x 16" Adobe Brick - Sienna with Mortar Wash



4" x 16" Adobe Brick
Haystack



4" x 16" Adobe Brick
Saltillo



4" x 16" Adobe Brick
Sienna



TRIM & ACCESSORIES

Coronado Stone offers one of the largest architectural stone accessory product lines in the industry. These meticulously handcrafted accents will add the extra finishing touches to your amazing project.

Flagstone Wall Cap - *Lompoc*
Italian Villa® - *Dakota Brown*

MOLDINGS & SILLS



LINTELS



MANTELS



WINDOW STONES AND KEYSTONE



ARCHITECTURAL TRIM STONE



HEARTHSTONES

18" x 20" x 2" Will accommodate all colors.



BOXES

Will accommodate all colors. Shown in Smooth Limestone Texture



WALL & POST CAPS



Flagstone Wall Cap - *Chablis*



Chiseled Stone Post Cap - *Antique Cream*

BRICK ACCESSORIES



Brick Molding - *Antique Red*



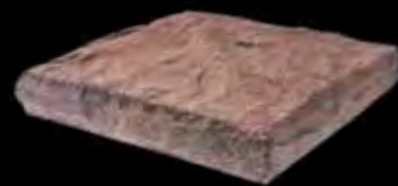
Brick Corner - *Rustic Blend*



Flagstone Post Cap - *Lompoc*
20" x 20", 28" x 28", 30" x 30"
Edge Thickness: 3 1/2"



Flagstone Wall Cap - *Light Grey*
9" x 18", 12" x 24", 14" x 24", 18" x 24"
Edge Thickness: 2 1/2"



Chiseled Stone Post Cap - *Brownstone*
16" x 16", 18" x 18", 20" x 26", 21" x 21"
24" x 24", 28" x 28", 30" x 30", 32" x 32"
36" x 36", 38" x 38", 42" x 42"
Edge Thickness: 3 1/2" Peak Height: Varies Depending on Size



Chiseled Stone Wall Cap - *Aspen*
8" x 24", 10" x 18", 12" x 18"
14" x 18", 16" x 24", 18" x 24"
Edge Thickness: 2" Peak Height: 3 1/2"



Snapped Edge Post Cap - *Carmel Mtn.*
24" x 24"
Edge Thickness: 1 3/4"



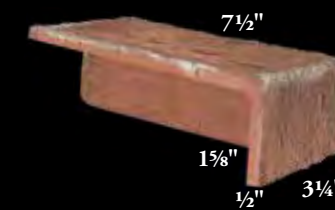
Snapped Edge Wall Cap - *Dakota Brown*
12" x 24", 14" x 24"
Edge Thickness: 1 3/4"



2 1/2" x 8" Corner
Rustic Blend



4" x 8" Corner
Rustic Blend



3-Sided Corner
Rustic Blend
Left and Right Corners Available



Long Return Corner
Rustic Blend



Brick Sill
Rustic Blend



2 1/2" Brick Molding
Rustic Blend



2 1/2" x 10" Brick Cap
Tribeca

(All inside measurements are nominal. Items do not come grouted.)



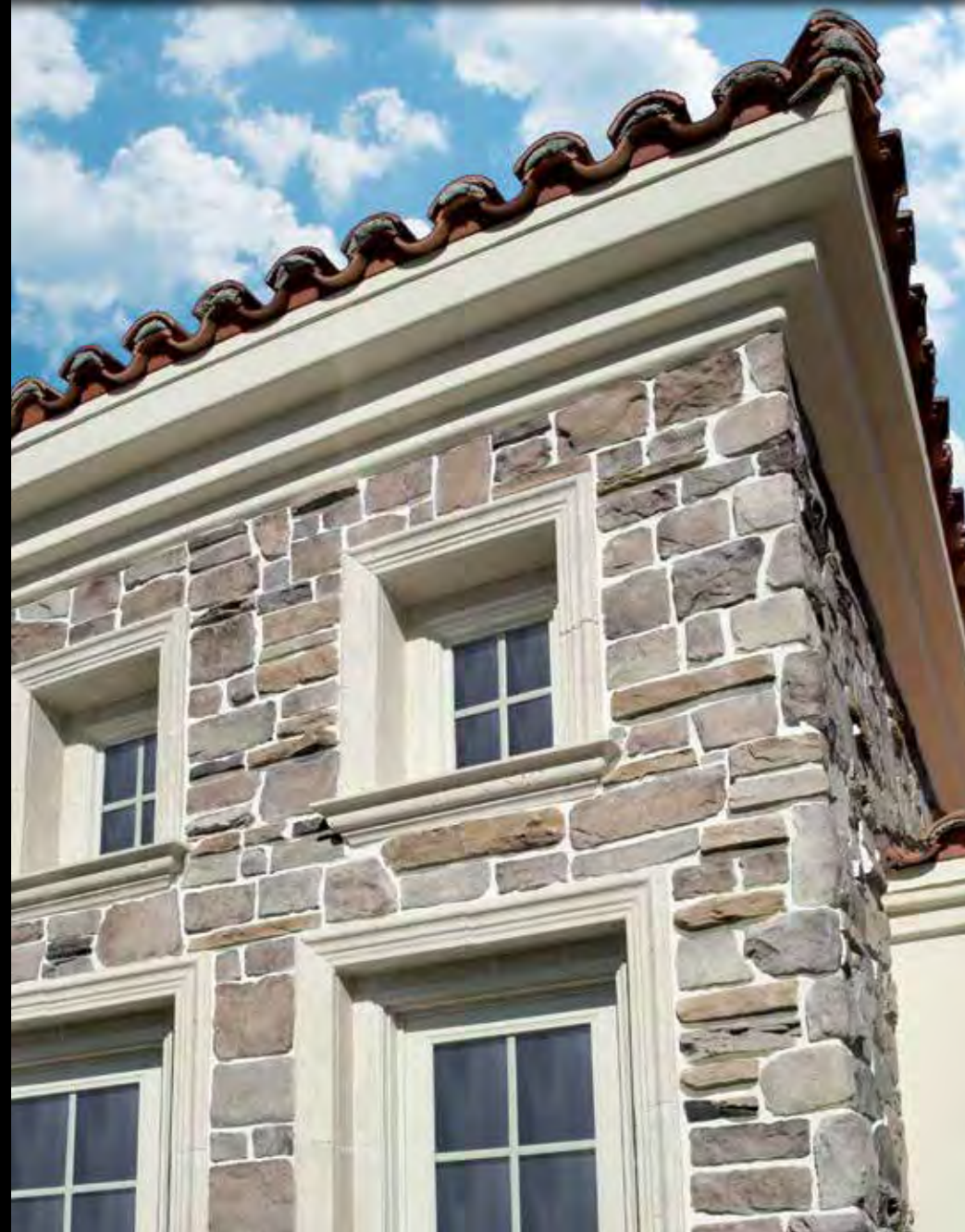
3/4" Full Brushed (White Grout)
French Country Villa® - Bordeaux



3/4" Full Brushed (Matching Grout)
French Country Villa® - Bordeaux



1/2" - 3/4" Deep Raked
Mountain Villa® - Rustic Valley



Full Brushed - White Grout



Shallow Brushed - Grey Grout



3/4" Full Clean Smooth Brushed
Euro Villa® - Timberlake



1" Full Rough Brushed
Euro Villa® - Timberlake



3/4" Full Brushed
Tuscan Villa® - Prairie Moss



1" - 1 1/2" Full Smooth Tooled
Mountain Villa® - Rustic Valley



3/4" Shallow Brushed
Mountain Villa® - Grey Quartzite



1" - 1 1/2" Full Brushed
Mountain Villa® - Grey Quartzite



3/4" Deep Raked (Matching Grout)
Italian Villa® - Portabella



1" Full Brushed (White Grout)
Italian Villa® - Portabella



3/4" Weeping
Tuscan Villa® - Prairie Moss



TECHNICAL DATA

Coronado Stone supports the specification and design process with architectural binders, hatch patterns, tileable textures and a variety of other helpful specification tools, all of which are available in hardcopy or can be downloaded from our website.

12" x 24" Chiseled Limestone - *Silver Ash*
16" x 24" Colosseum Travertine - *Black Forest*
16" x 24" The Getty Stone - *Embassy Blend*
16" x 30" Sand Canyon Flagstone - *Palomar Blend*

TECHNICAL DATA

Coronado Stone is manufactured to meet or exceed specifications for all major code approvals. Independent testing confirms compliance with ICC-ES AC51 for Precast Stone Veneer. Always check your local building codes before installing stone.


Weight: The average packaged weight of Coronado Stone veneer is 8 to 12 lbs. per square foot. Weight varies with thickness.

Non-combustible: Testing on Coronado Stone showed zero flame spread and zero smoke development.

Integral Colors: Coronado's production process results in a product which maintains a natural stone appearance even after many years of exposure to the elements.

Approvals: Coronado Stone has been tested by independent laboratories and has been approved for its intended use by:

 **ICC The International Conference of Building Officials. Report ESR-2598**

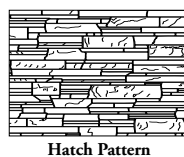
 **Texas Department of Insurance Product Approval Code. Evaluation ID EC-101**

 **Florida Department of Business & Professional Regulation Approval Code. Evaluation FL31373**

TECHNICAL DOWNLOADS

Visit www.CORONADO.com to download an extensive collection of technical data and specification sheets. Click on the **(RESOURCES)** link in the top menu bar to view the following items:

- Installation Specification Sheets
- Technical Data
- Cross-Section Details
- Hatch Patterns
- Stone Tileable Textures



TESTING

Materials:

- Cement ASTM C150
- Sand ASTM C144 or C33
- Aggregate ASTM C33 or C330

Testing:

- Shear Bond Test Tested in accordance with ASTM C482 Greater than 50 psi
- Water Absorption Tested in accordance with section 3.1.4 & 4.6 of ICC-ES AC51
- Freeze / Thaw Tested in accordance with ASTM C67 Less than 3% mass loss
- Unit Weight Shipping weight is less than 15 lbs. per sq. ft. Density is determined in accordance with ASTM C567
- Compressive Strength Tested in accordance with ASTM C39 Greater than 1800 psi
- Tensile Strength Tested in accordance with ASTM C190
- Flexural Strength Tested in accordance with ASTM C348

INSTALLATION GUIDES

- Standard Stone Installation Guide (Available in English and Spanish)
 - WoodStone Installation Guide
 - Classic Series Installation Guide (Available in English and Spanish)
 - Industrial Ledge Installation Guide
 - The Wave Installation Guide
 - Lennox Stone Installation Guide
 - Floor Tile Installation Guide
 - Coronado Stone Additional Tech Notes
- www.CORONADO.com/InstallationGuides

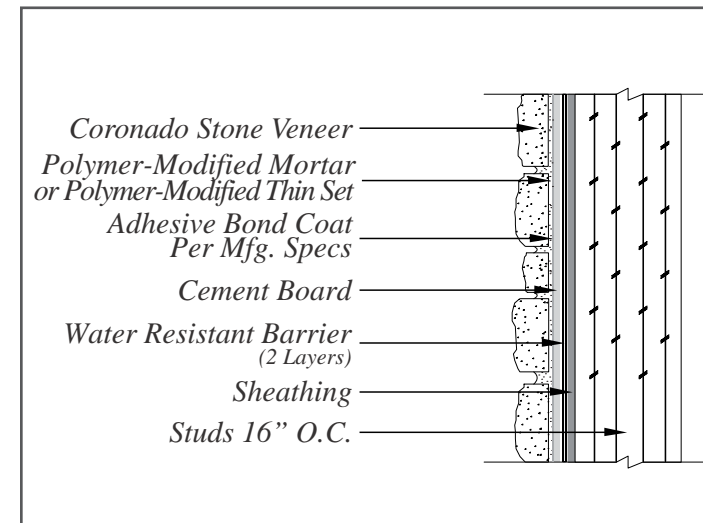
⚠ PROP 65 WARNING

Our cement stone veneer products contain Silica, crystalline (airborne particles of respirable size), which is known to the State of California to cause cancer.

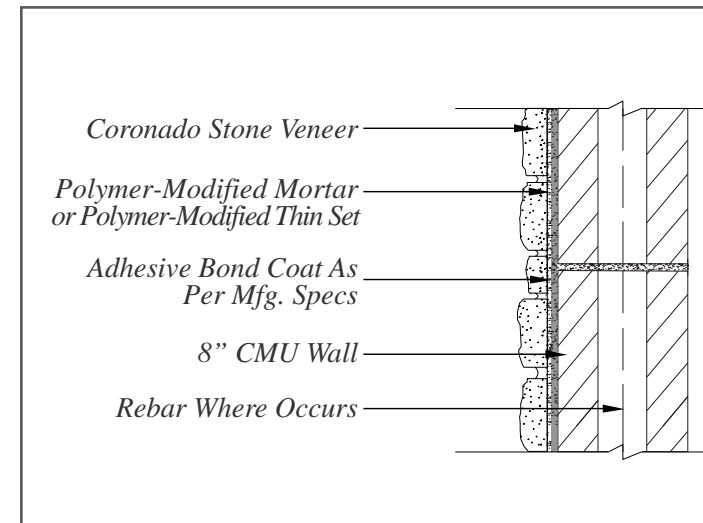
A properly fitted NIOSH approved particulate filtering facepiece should be used during dust generating processes, including cutting, sawing, and/or drilling.

For more information go to www.P65Warnings.ca.gov.

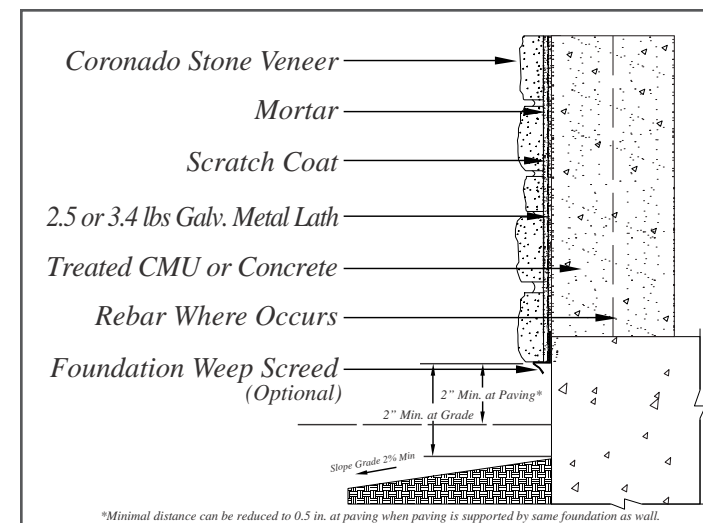
WOOD FRAME WITH CEMENT BOARD



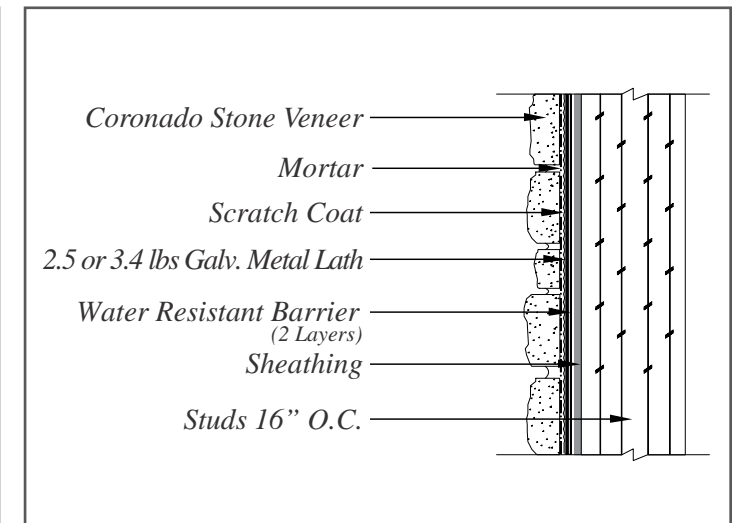
UNTREATED / UNPAINTED CLEAN CMU



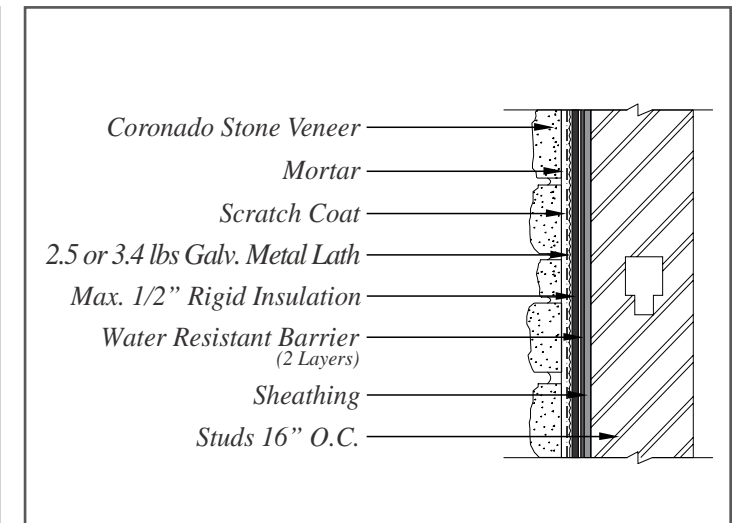
TREATED / PAINTED CONCRETE



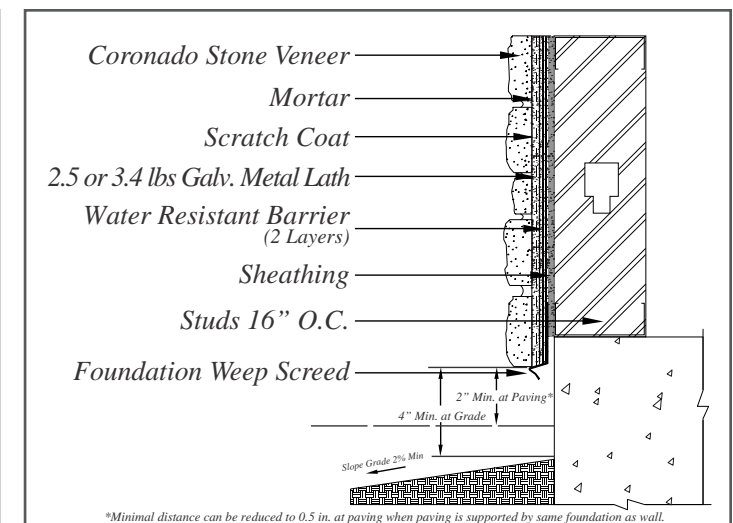
WOOD FRAME WITH SHEATHING



STEEL FRAME WITH RIGID INSULATION



STEEL FRAME WITH SHEATHING



For Additional Details Please Visit - <https://www.coronado.com/TechnicalDrawings>
Drawings Not To Scale

Profile	Height	Length	Thickness	Weight
3" Split Limestone	3"	up to 18"	1" - 1 3/4"	7 - 10 lbs.
6" Split Limestone	6"	up to 30"	1 1/4"	7 - 10 lbs.
8" Classic Jerusalem	8"	8" - 24"	1"	7 - 10 lbs.
Adobe Brick	3 1/2" (±1/8")	15 1/4" (±1/4")	1"	4 - 6 lbs.
Aegean Coral	16"	24"	1"	7 - 10 lbs.
Amalfi Ledge	6"*	24"	1/2" - 1 1/4"	7 - 10 lbs.
Appalachian Fieldstone	7" - 9"	7" - 9"	1 1/2" - 2 1/2"	7 - 10 lbs.
Artisan Ledge	4"*	up to 20"	1" - 2"	7 - 10 lbs.
Barn WoodStone	4", 6" and 8"	36"	1"	7 - 10 lbs.
Belgian Brick	2 1/2" (±1/16")	7 3/4" (±1/8")	3/4"	4 - 6 lbs.
Belgian Castle	2" - 12"	up to 16"	1"	7 - 10 lbs.
Canyon Cobble	2" - 10"	4" - 24"	1" - 1 3/4"	7 - 10 lbs.
Canyon Ledge	1" - 7"	up to 20"	1 1/2" - 3"	7 - 10 lbs.
Caribbean Coral	4" - 12"	4" - 16"	1"	7 - 10 lbs.
Carolina Rubble	2" - 10"	4" - 16"	1 1/4" - 2 1/4"	7 - 10 lbs.
Chiseled Limestone	12"	24"	1"	7 - 10 lbs.
Clinker Brick	2 1/2"	4" and 8"	3/4" - 2"	4 - 6 lbs.
Colosseum Travertine	16"	24"	1"	7 - 10 lbs.
Coronado Honey Ledge	2" and 4"*	up to 20"	1" - 2"	7 - 10 lbs.
Coronado Strip Stone	1 1/2" - 2"	up to 23"	1 1/4" to 2"	7 - 10 lbs.
Country Castle	1 1/2" - 7 1/2"	4" - 20"	1 1/2"	7 - 10 lbs.
Country Rubble	2" - 8"	up to 23"	1" - 2 1/2"	7 - 10 lbs.
Creek Rock	3" - 10"	3" - 10"	3/4" - 2 1/2"	7 - 10 lbs.
Eastern Mountain Ledge®	1" - 5"*	up to 22"	1" - 3"	7 - 10 lbs.
Element LedgeStone	2" - 6"*	up to 20"	3/4" - 2"	7 - 10 lbs.
English Rubble	6" - 14"	8" - 32"	1 1/4" - 2"	7 - 10 lbs.
French Country Villa®	2" - 7"	up to 18"	1 1/2" - 2"	7 - 10 lbs.
French Limestone	12"	24"	1"	7 - 10 lbs.
The Getty Stone	16"	24"	1" - 1 3/4"	9 - 12 lbs.
Hill Country Limestone	12"	24"	1"	7 - 10 lbs.
Idaho Drystack	1" - 4"	4" - 16"	1 1/4" - 2"	7 - 10 lbs.
Industrial Ledge	2", 3", 4" & 5"	4" - 30"	3/4" - 2"	7 - 10 lbs.
Italian Villa®	2" - 8"	up to 16"	1 1/2" - 3 1/4"	7 - 10 lbs.
Minnesota Fieldstone	6" - 12"	6" - 12"	1 1/2" - 2 1/2"	7 - 10 lbs.
Montana Ledge	1" - 4"*	up to 20"	1" - 2 1/2"	7 - 10 lbs.
Mountain Strip Stone	1 1/2" and 3"	up to 23"	1 1/4" to 2"	7 - 10 lbs.
New England Brick	2 5/8" (±1/16")	9 1/2" (±1/8")	1/2" (±1/16")	4 - 6 lbs.

Profile	Height	Length	Thickness	Weight
Old Country Ledge	2" - 7"	4" - 20"	1" - 1 3/4"	7 - 10 lbs.
Old World Ledge	1" - 5"	4" - 16"	1" - 1 1/2"	7 - 10 lbs.
Osage	3" - 12"	4" - 28"	1" - 1 1/2"	7 - 10 lbs.
Pavilion Stone	4" - 12"	4" - 20"	1/2" - 1"	7 - 10 lbs.
Playa Vista Limestone	2 1/2", 5" and 7 3/4"	up to 24"	1" - 1 1/2"	7 - 10 lbs.
Prairie Stone	2" to 5"	4" - 30"	1 1/4"	7 - 10 lbs.
Pro-Ledge®	4"*	up to 20"	1" - 1 1/2"	7 - 10 lbs.
Quick Stack®	2" or 4"*	up to 20"	1" - 2"	7 - 10 lbs.
Refined WoodStone	6"	36"	1"	7 - 10 lbs.
River Rock	2" - 10"	4" - 10"	3/4" - 2 1/2"	7 - 10 lbs.
Rocky Mountain Ledge	1" - 7"	up to 24"	1" - 2 1/2"	7 - 10 lbs.
Roman Brick	2 1/4" (±1/8")	10" (±1/8")	5/8" (±1/16")	4 - 6 lbs.
Rough Cut WoodStone	6"	36"	1"	7 - 10 lbs.
Sawtooth Ledge	3" and 6"	up to 20"	1"	7 - 10 lbs.
Santa Barbara	4" - 14"	8" - 32"	1 1/4" - 2"	9 - 12 lbs.
Sand Canyon Flagstone	16"	30"	1"	9 - 12 lbs.
Sand Mold Brick	2 3/4" (±1/8")	8 3/4" (±1/8")	1/2"	4 - 6 lbs.
Sculptured Brick	2 1/2" (±1/8")	7 5/8" (±1/4")	3/4" - 1"	4 - 6 lbs.
Sicilian Brick	2 1/2" (±1/8")	7 3/4" (±1/8")	1/2"	4 - 6 lbs.
Sierra Ledge	4"*	up to 20"	1 1/2" - 2"	7 - 10 lbs.
Smooth Limestone	12"	24"	1"	7 - 10 lbs.
Sonora Sandstone	12"	28"	1"	7 - 10 lbs.
Special Used Brick	2 1/2" (±1/8")	7 3/4" (±1/4")	1/2" (±1/16")	4 - 6 lbs.
Split Fieldstone	6" - 20"	6" - 20"	1" - 2"	7 - 10 lbs.
Texas Rubble	2" - 8"	up to 23"	1" - 2 1/2"	7 - 10 lbs.
Tuscan Villa®	2" - 12"	4" - 16"	1" - 1 3/4"	7 - 10 lbs.
Urbana Smooth	7 1/2"	15 1/2"	3/4" - 1"	7 - 10 lbs.
Urbana Split	8"	16"	1"	7 - 10 lbs.
Venetian Villa®	2" - 14"	4" - 32"	1" - 2 1/2"	7 - 10 lbs.
Viejo Ranch	2" - 18"	up to 30"	2" - 3"	9 - 12 lbs.
Virginia Ledge	2" or 4"*	up to 20"	1" - 3"	7 - 10 lbs.
Weathered Brick	2 5/8" (±1/8")	9 7/8" (±1/8")	1/2" (±1/16")	4 - 6 lbs.
Weathered Edge	1" - 7"	up to 32"	1" - 2 1/2"	7 - 10 lbs.
Wirecut Brick (Oversized)	3 5/8" (±1/16")	11 1/2" (±1/8")	1/2" (±1/16")	4 - 6 lbs.
Wirecut Brick (Standard)	2 5/8" (±1/16")	7 7/8" (±1/8")	1/2" (±1/16")	4 - 6 lbs.

All sizes and weights are nominal and may vary slightly depending on profile.
 Weight is based on one square foot of stone.
 Contact Coronado for further details.
 * Stone sizes within panels may vary.

Color	View Color On Page
Antique Cream	62, 74, 75, 117
Aspen	40, 56, 57, 60, 64, 68, 70, 74, 76, 86, 103, 115, 116, 117
Black Forest	9, 10, 12, 14, 25, 48, 49, 50, 82, 121-122
Bordeaux	35-36, 43, 119
Brookshire	80, 127
Brookside	47, 50, 58, 59, 62, 66, 82, 100
Cape Cod Grey	34, 47, 55, 56, 57, 66, 67
Carmel Mountain	44, 51, 52, 56, 60, 64, 68, 75, 85, 89, 96, 109, 115, 116, 117
Cathedral Grey	56, 58
Chablis	44, 47, 50, 51, 59, 61, 64, 68, 69, 70, 81, 82, 86, 115, 116, 117
Coastal Brown	56, 57, 60, 64, 74, 86, 93-94
Country Beige	1, 2, 9, 16
Cream	5-6, 8, 10, 11, 15, 16, 23-24, 25, 28
Dakota Brown	34, 37, 40, 48, 59, 64, 66, 76, 77, 78, 81, 82, 85, 88, 89, 95, 110, 113-114, 115, 116, 117
Embassy Blend	14, 121-122
English Grey	55, 80
Falmouth	54, 58
Florentine	41, 95
French White	1, 2, 3, 9
Genoa Sands	27, 28
Grey	27, 38
Grey Granite	2, 29
Grey Quartzite	44, 50, 52, 59, 62, 63, 67, 73, 74, 76, 85, 88, 95, 119, Back Cover
Harvard Grey	5-6, 8
Huron	50, 52, 54, 60, 62, 63, 86
Lompoc	71-72, 81, 89, 96, 113-114, 116, 117
Madison County	38, 59, 64, 81, 88, 96
Monarch	41, 62
Mountain Sunset	87, 88
Mount Vernon	4, 53
Northland	4, 53
Oakbrook	30, 50
Palomar Blend	3, 15, 121-122
Pine Creek	31-32
Portabella	40, 120
Prairie Moss	42, 120
Provo Canyon Grey	39, 40, 60
Roman	Cover, 5-6, 12, 115
Shasta	52, 63
Silver Ash	1, 2, 3, 4, 7, 10, 11, 14, 16, 53, 121-122
Smoke	1, 29, 53, 54
Sunset Blend	37, 61, 66, 74
Texas Cream	37, 74, 75
Verona	40, 43, 95
Versailles	37, 44
Volterra	39, 40, 43, 115
Walnut	25, 27
Wheat	59, 95, 103
White	4, 27, 28, 49
White Sands	8, 13

Toll Brothers www.tollbrothers.com	Builder CA, AZ, NV	Cover, 8, 21, 23-24, 42, 47, 49t, 55t, 57, 76, 102, 105b, 106, 108, 110, 112, 127
LandCreativeInc. www.landcreativeinc.com	Landscape Architect Costa Mesa, CA	Cover
Arthur Rutenberg Homes www.arthurrutenberghomes.com	Builder Clearwater, FL	Back Cover, 35-36, 39, 73
Rob Harris Productions, Inc. www.rob-harris.com	Photographer Tampa, FL	Back Cover, 35-36, 39, 73
Studio V www.studiointeriors.com	Interior Architect Scottsdale, AZ	3
Architect Orange www.aoarchitects.com	Architect Orange, CA	5-6
Infinity Home Collection www.infinityhomecollection.com	Builder Denver, CO	9, 85
Zephyr www.zephyrpartners.com	Builder Encinitas, CA	12
William Lyon Homes www.lyonhomes.com	Builder Newport Beach, CA	13, 34
Vance Fox Photography www.vancefox.com	Photographer Reno, NV	13, 34
Applied Photography LLC www.apgs.net	Photographer Orange, CA	17-18, 26
Lennar www.lennar.com	Builder Miami, FL	17-18, 20, 22, 27, 29, 30
KB Home www.kbhome.com	Builder Los Angeles, CA	25
SDK Atelier www.sdkatelier.com	Architect Irvine, CA	27, 30
Eric Figge Photography www.ericfiggephoto.com	Photographer Orange, CA	27, 30
Pardee Homes www.pardeehomes.com	Builder Bonsall, CA	28
Wendy Black Rodgers Interior www.wbrint.com	Interior Designer Scottsdale, AZ	39b
Castone www.castone.org	Distributor Knoxville, TN	38
Timber Ridge Properties www.timberidgeproperties.net	Builder Denver, CO	40, 69t, 74, 77
Weber Design Group www.weberdesigngroup.com	Builder Naples, FL	41
Tom Harper www.tomharperphotography.com	Photographer Naples, FL	41
Stone Creek Furniture www.stonecreekfurniture.com	Remodeler Scottsdale, AZ	44
Christopher Mayer	Photographer Orange, CA	47
Partners In Building www.partnersinbuilding.com	Builder Houston, TX	49b
Built By Sky	Builder Calgary, AB	55b
Sustain Scape www.sustainscapeaz.com	Landscape Designer Scottsdale, AZ	60
Drees Homes www.meritagehomes.com	Builder Phoenix, AZ	63
Process Design Build, L.L.C. www.processdesignbuild.com	Builder Tucson, AZ	66
Van Metre Homes www.vanmetrehomes.com	Builder Ashburn, VA	67
Red Rock Contractors www.builddredrock.com	Builder Mesa, AZ	83-84
Aron Photography www.aronphoto.com	Photographer Encinitas, CA	85
Frontier Homes www.fhcommunities.com	Builder Moreno Valley, CA	86
EON Design Group www.eondesignco.com	Designer Los Angeles, CA	93-94
CalAtlantic Homes www.calatlantichomes.com	Builder Las Vegas, NV	97-98
Camelot Homes www.camelothomes.com	Builder Scottsdale, AZ	101
Meritage Homes www.meritagehomes.com	Builder Phoenix, AZ	104
Arizona Stone www.arizonastone.com	Distributor Phoenix, AZ	105t
Shea Homes www.sheahomes.com	Builder Gilbert, AZ	109
Mark Boisclair Photography, Inc. www.markboisclair.com	Photographer Phoenix, AZ	111
Maracay Homes www.maracayhomes.com	Builder Scottsdale, AZ	111

50 YEAR LIMITED WARRANTY

Coronado Stone Products® wall veneers are protected under this warranty for a period of 50 years from the date purchased, when used on a vertical structure which conforms to local building codes and when installed in accordance with the manufacturer's instructions. Warranty coverage specifically excludes: damage resulting from structure settlement and other types of wall movement, contact with paint or chemicals, discoloration due to contaminants, staining, oxidation and water damage.

This warranty covers only manufacturing defects in Coronado Stone Products® wall veneers and is limited to the replacement or repair of defective materials only and does not cover the cost of removal or installation of defective products. This warranty is limited to the original purchaser and is non-transferable to any subsequent owner.



Santa Barbara - Brookshire (Coursed Pattern)

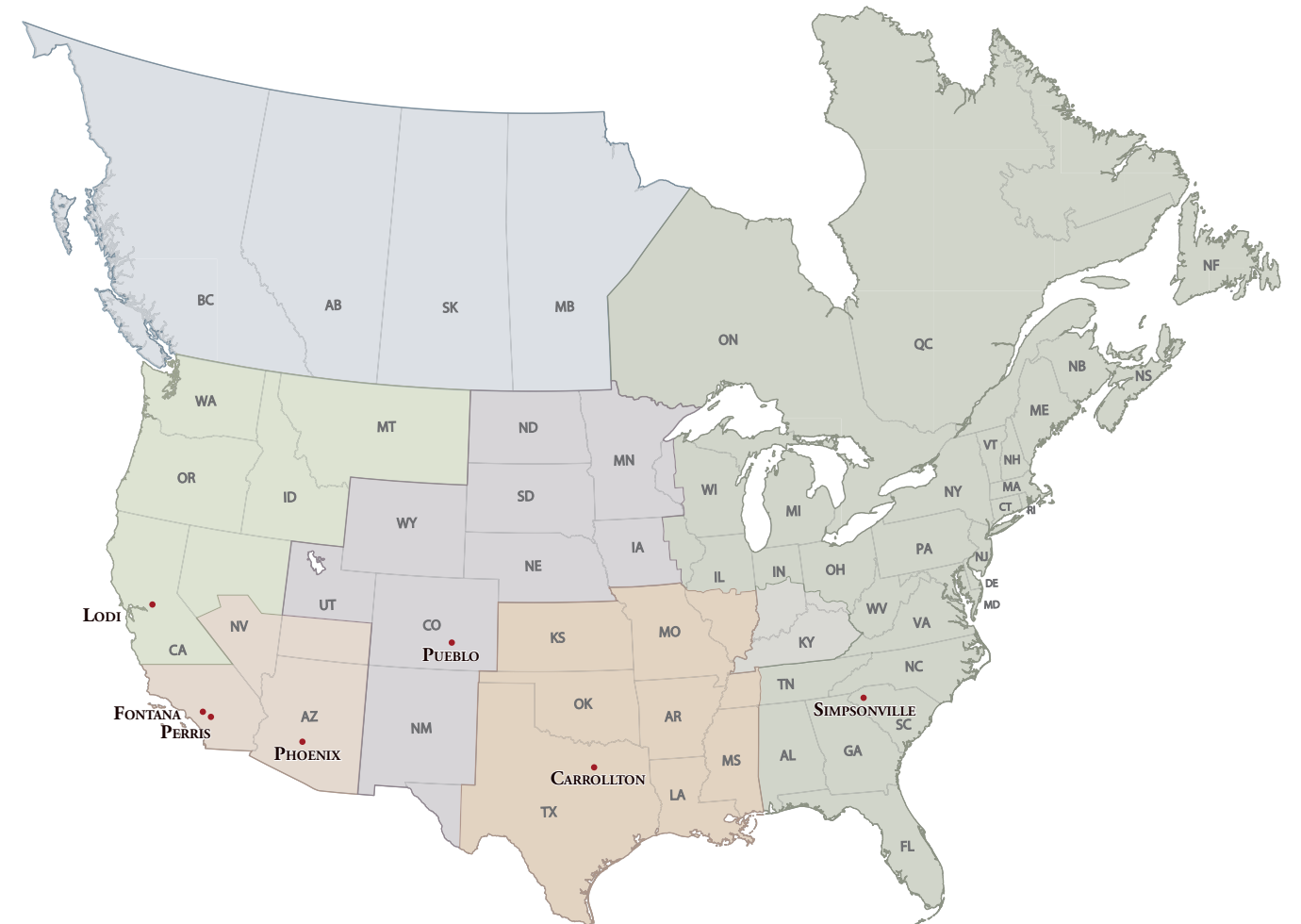
In 1960, there was only one stone manufactured in California. It was a 2½' x 4' sheet of concrete which was broken up into random shapes at the job site. Mel Bacon saw the need for something better and started making his own stone. He soon developed the first random shaped stones from individual molds which led to the development of many of today's popular varieties of ledge stones and ashlar patterns.

As a mason, Mel experienced the difficulty of installing stone that was not created with the installer in mind. It was heavy and the shapes and sizes were difficult to piece together. He realized that through proper pattern and mold design, ease of installation could be achieved. From that moment, ease of installation became the benchmark for every pattern of stone Mel created. Easy installation is not only a time saver, it's a project saver.

The pride we take in the creation of our product shows in the quality experience you will enjoy as one of our valued customers. Give Coronado the opportunity to make you a believer. Our mission is your satisfaction!

60 YEARS OF MANUFACTURING EXCELLENCE

Coronado manufactures and distributes its high quality stone at seven factories conveniently located across North America



Northwest Region serviced by the Lodi, CA Manufacturing Facility
(209) 334-1380

Southwest Region serviced by the Fontana, CA Manufacturing Facility
(800) 847-8663

Mountain Region serviced by the Pueblo, CO Manufacturing Facility
(719) 470-7381

Desert Region serviced by the Phoenix, AZ Manufacturing Facility
(602) 732-6558

Central Region serviced by the Carrollton, TX Manufacturing Facility
(972) 434-2515

Southeast Region serviced by the Simpsonville, SC Manufacturing Facility
(864) 962-1221



Old Country Ledge - Grey Quartzite

Five Dollars



CORONADO®

The Leader in Manufactured Stone, Brick and Tile Products

11191 Calabash Ave. • Fontana, CA 92337
Phone: (800) 847-8663 • Fax: (909) 357-7362
sales@coronado.com

WWW.CORONADO.COM

Due to photographic and printing variations, brochure colors may not be accurate. All sizes are nominal.
We suggest examination of Coronado product samples prior to purchase.