

MADE IN ITALY. MADE TO EXCEL.

BLAZIE



Since its founding in 1891, Acme Brick has continually advanced the art and science of providing affordable, sustainable, enduring, and beautiful product choices for America's homeowners, builders, contractors, institutions, and businesses.

Acme Brick Tile & Stone traces its roots back to 1964 and is a leader in providing builders, architects, designers, and contractors with a wide range of excellent products. At more than 50 locations across 13 states, Acme Brick Tile & Stone, offers distinctive products of superior quality, sourced from around the world and delivered with impeccable service - and at many locations, in-house design assistance. Our customers include builders, architects, designers, contractors, and DIY homeowners.

In ways large and small, Acme Brick associates work hard to provide building materials that are as good for the environment as it is for the people who build with it.



METAL LOOK

COLOURED BODY
PORCELAIN TILES

WHITE-BODY
WALL TILES



BLAZE

METAL
MASTERPIECE

INTERIOR &
EXTERIOR DESIGN

Porcelain Tiles

20

BATHROOMS &
RELAXATION SPACES

Wall Tiles

72

TECHNICAL
FEATURES

96

PORCELAIN AND WALL TILES: A SAFE CHOICE

FASHION
EVOLVES
INTO
STYLE



● IT DOES NOT BURN

● RECYCLABLE

● HYGIENIC

● VERSATILE

● IT LOVES THE ENVIRONMENT

● LONG LASTING

● SAFE

● RESISTANT

● ZERO PVC

● ZERO VOCs

METAL MASTERPIECE

Blaze recreates the beauty of oxidized metal in the best porcelain floor tiles and the purest ceramic wall tiles. Exposed to the action of oxidizing agents, metal surfaces evolve, developing an unparalleled color range and aesthetic complexity. Constant research and experimentation with graphics reinvents the beauty of oxidized metal in Blaze, a powerful and modern interior design tool.

Blaze offers a snapshot of the oxidation process at its aesthetic peak. It does so with surprising realism, bringing out the material's strength and industrial spirit. Different colors, drips, and abrasions stand out on the surface of the product together with iridescent effects and reflections that shift with the changing light.





THE INDUSTRIAL STRENGTH AND ARCHITECTURAL APPEAL OF THE METAL LOOK



Blaze is a collection with a strong visual impact that recalls Urban Industrial and Raw Luxe styles and the Rusty Chic fashion trend. The strength of the oxidized metal and its time-worn charm define the authentic character of public and private interiors. The fusion of the materials and the coexistence of furnishings from different sources create a style of bold elegance and unmistakable personality.

A SOFT, DELICATE LUSTER

Also available in a polished finish, Blaze is bursting with the brilliance typical of metals. An additional surface treatment is used to sand – at a microscopic level – only the top of the ridges created by the mold. When struck by light, the ceramic surface generates a diffused, non-reflective sheen that retains the tactile sensation typical of an oxidized patina.



PORCELAIN TILES

120x278 cm | 6 mm

120x120 cm | 9 mm

75x150 cm | 9,5 mm

75x75 cm | 9,5 mm

37,5x75 cm | 9,5 mm

120x120 cm | 20 mm | Outdoor paving *

60x60 cm | 20 mm | Outdoor paving *

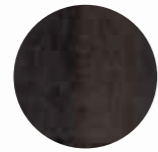
* Available in Corten



Corten



Aluminium



Iron

WALL TILES

Wall 50x110 cm | 8,5 mm



Corten



Aluminium



Iron



Verdigris

Blaze is a solid, compact, and complete collection: three metal effects in matte and polished porcelain tiles ranging from the timeless, industrial appeal of Corten to calamine-colored Iron and the silvery luminosity of Aluminium. Finally, there's Verdigris, a bluish green bloom on a copper-colored base, available only in the wall tiles.

THE ESSENCE OF THE URBAN STYLE



A UNIQUE AND COMPLETE SET OF DECORATIONS

PORCELAIN TILE DECORS

Blaze's selection of decorations emboldens the character of the room design, expressing itself in unique textures capable of satisfying every compositional fantasy.

From hexagons to mosaics to three-dimensional reliefs, different geometries enhance the entire porcelain decorative range, multiplying its application potential.



WALL TILE DECORS



The wall tiles are enriched with sophisticated solutions, like mosaics embellished with shiny metal inserts and layered earthy patterns that allow you to design spectacular walls or functional backdrops.





PORCELAIN TILES

INTERIOR & EXTERIOR DESIGN

SHOWROOM

20

HEADQUARTERS

32

INDOOR-OUTDOOR VILLA

44

LIVING LOFT

54

LOUNGE BAR

64



WALL TILES

BATHROOMS & RELAXATION SPACES

RESIDENTIAL BATHROOM

74

COMMERCIAL BATHROOM

86

REINVENTING UNCONVENTIONAL SPACES

Somewhere between industrial style and Raw-luxe, the unique character of the material gives aesthetic compactness to this sophisticated showroom. While the tones vary widely, it is the surprising graphic complexity of the textures that harmonizes the three surfaces inspired by oxidized metal.

SHOWROOM







THE BLAZE COLLECTION
REPRODUCES THE EVOCATIVE
TEXTURES AND COLORS
OF OXIDIZED METALS WITH
SURPRISING REALISM.





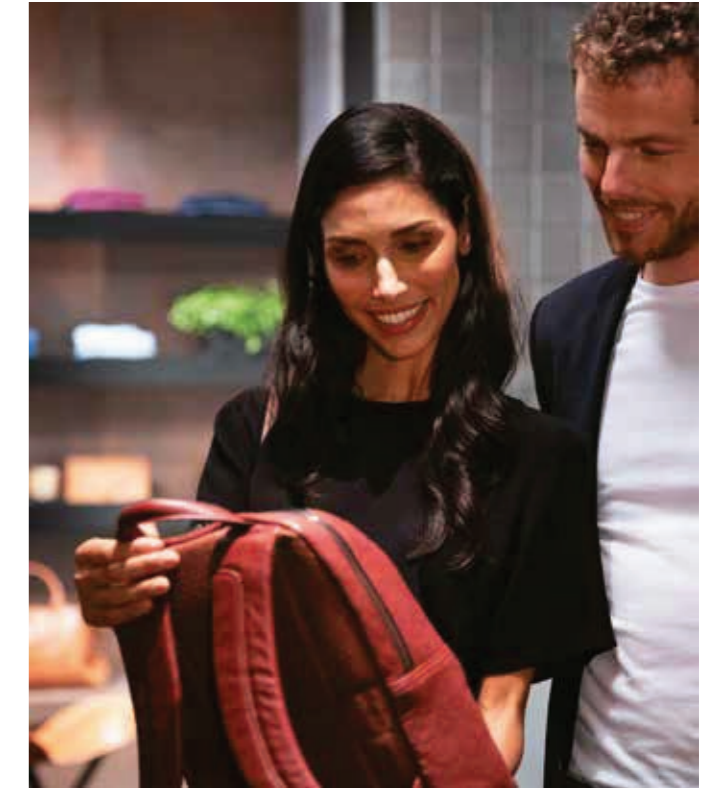
THE THREE-DIMENSIONAL FACTORY DECORATION EMPHASIZES THE INDUSTRIAL MOOD OF AN EXHIBITION SPACE INCORPORATING THE ALLURE OF THE METALLIC LOOK.





PORCELAIN TILES

Iron Matte 75x150 cm | 29 1/2"x59"
 Corten Matte 75x150 cm | 29 1/2"x59"
 Aluminium Matte 75x150 cm | 29 1/2"x59"

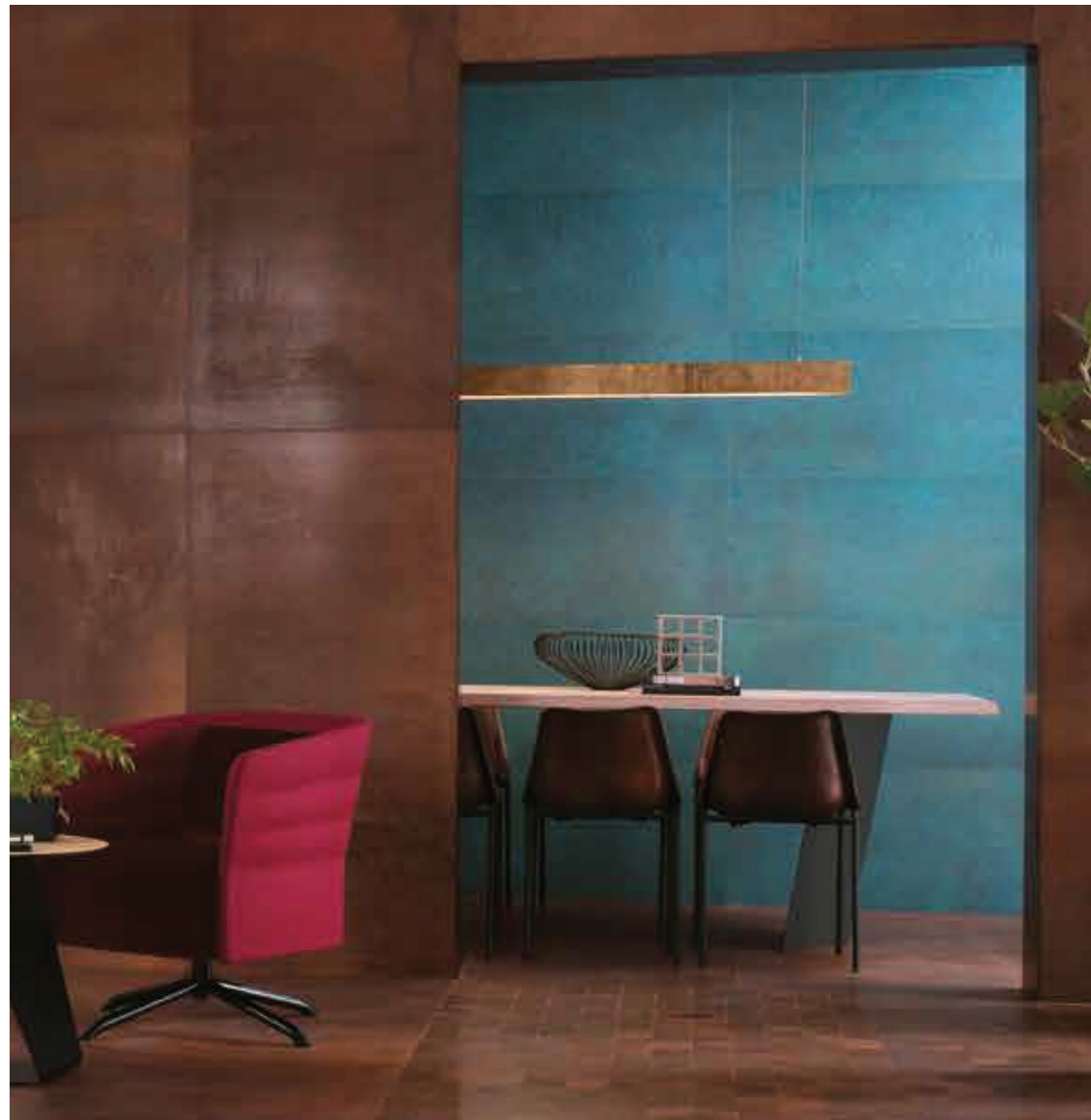


PORCELAIN TILE DECORS

Iron Mosaico 3D Factory Matte 29x29 cm | 11 3/8"x11 3/8"

A REFINED AESTHETIC ALCHEMY

A foyer with linear, rigorous architecture that preserves traces of the recent past. The spectacular oxidized metal-effect walls allow the material to express itself in all its visual richness.

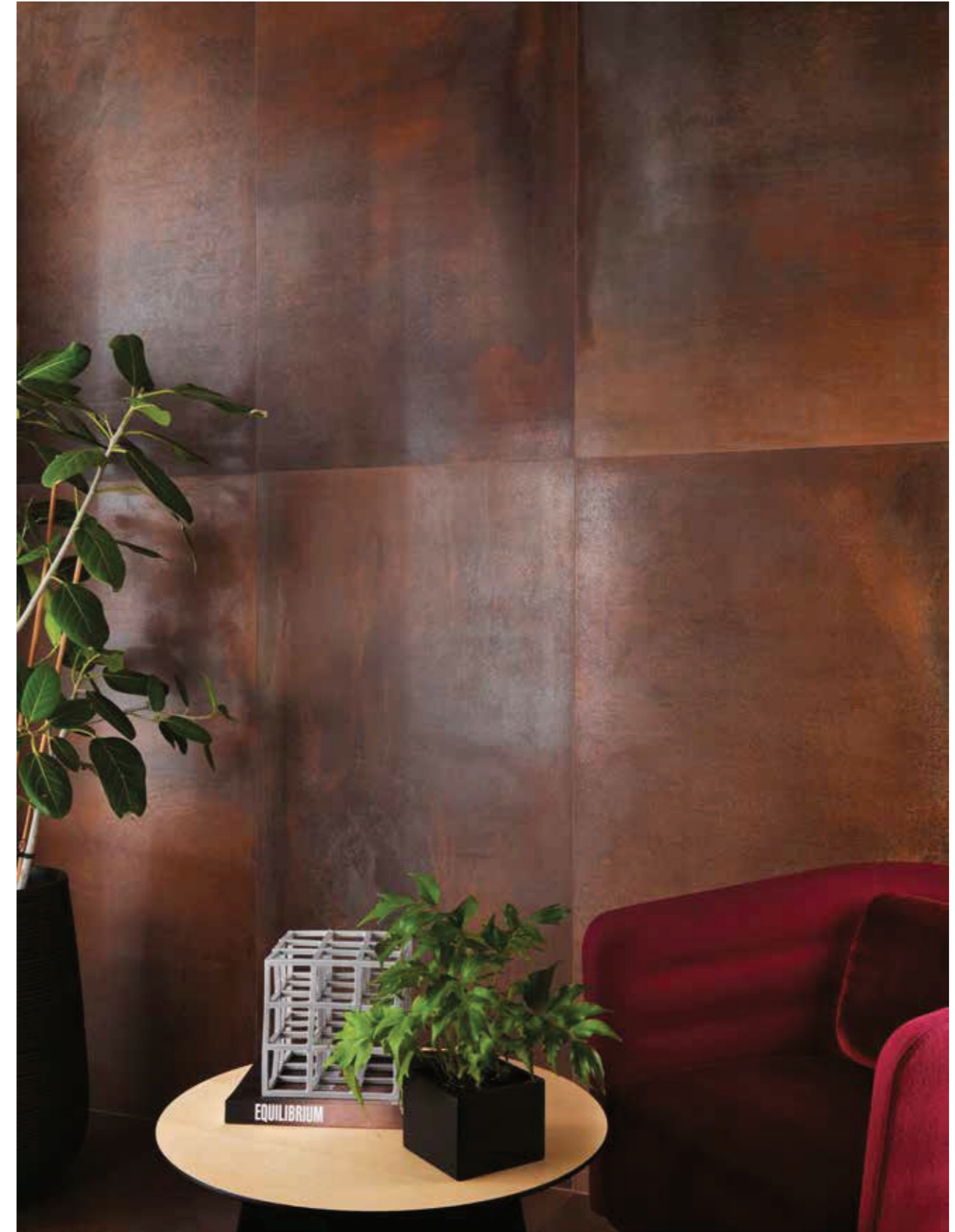






POLISHING THE SURFACE
ADDS A DELICATE SHEEN
TO THE OXIDIZED METAL
EFFECT WITHOUT CREATING
A MIRROR FINISH.







THE PORCELAIN ESAGONO MOSAIC, ALSO AVAILABLE IN A POLISHED VERSION, IS IDEAL FOR USE BOTH ON WALLS AND FLOORS TOGETHER WITH CORTEN, IRON, AND ALUMINIUM.





PORCELAIN TILES

Iron Polished 75x150 cm | 29 1/2" x 59"
 Corten Polished 75x150 cm | 29 1/2" x 59"
 Aluminium Matte 75x150 cm | 29 1/2" x 59"

PORCELAIN TILE DECORS

Corten Mosaico Esagono Lappato
 35,2x30,5 cm | 13 7/8" x 12"

WALL TILES

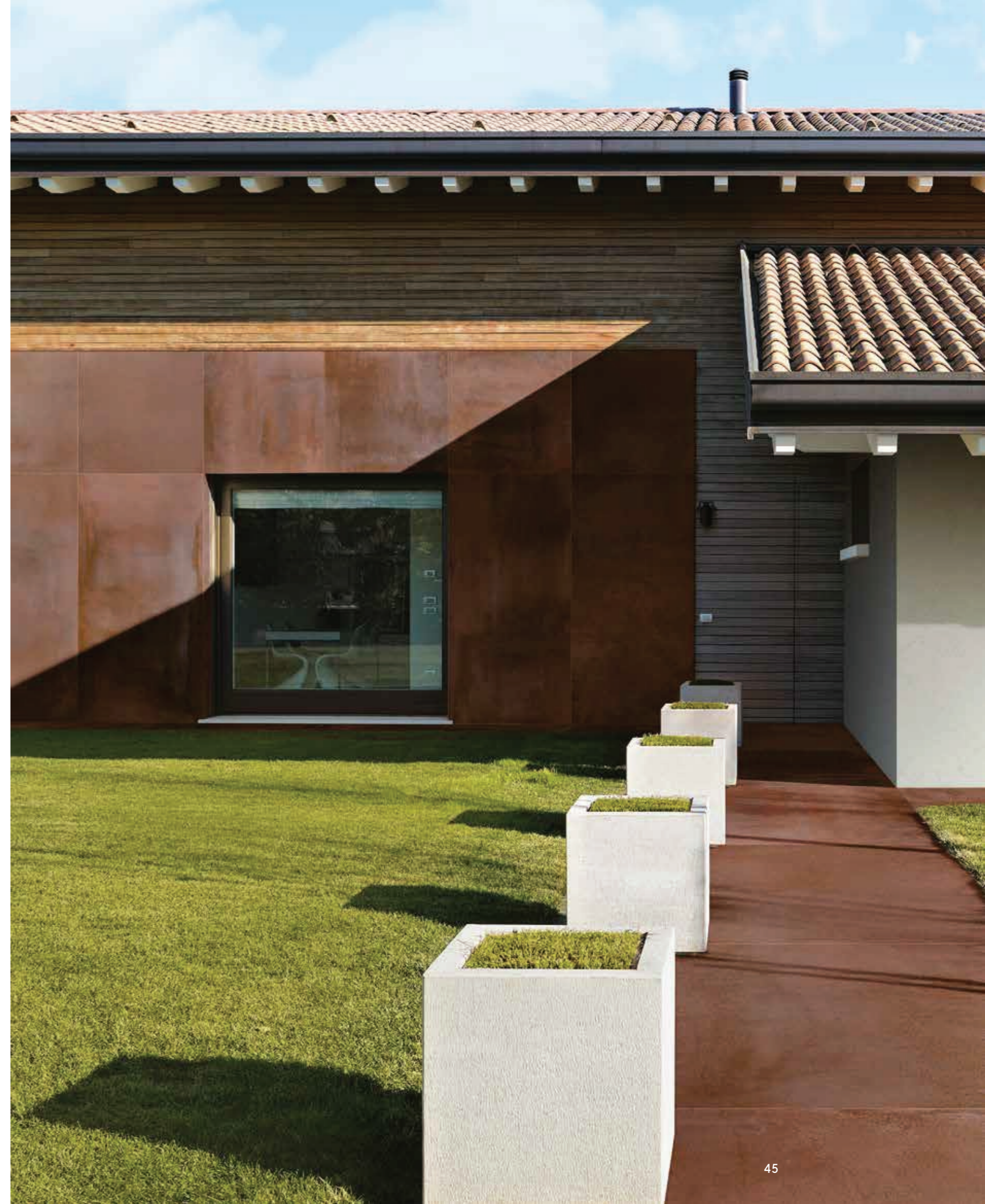
Verdigris 50x110 cm | 19 5/8" x 43 1/4"

RUST IN FULL SUNLIGHT

INDOOR-OUTDOOR VILLA

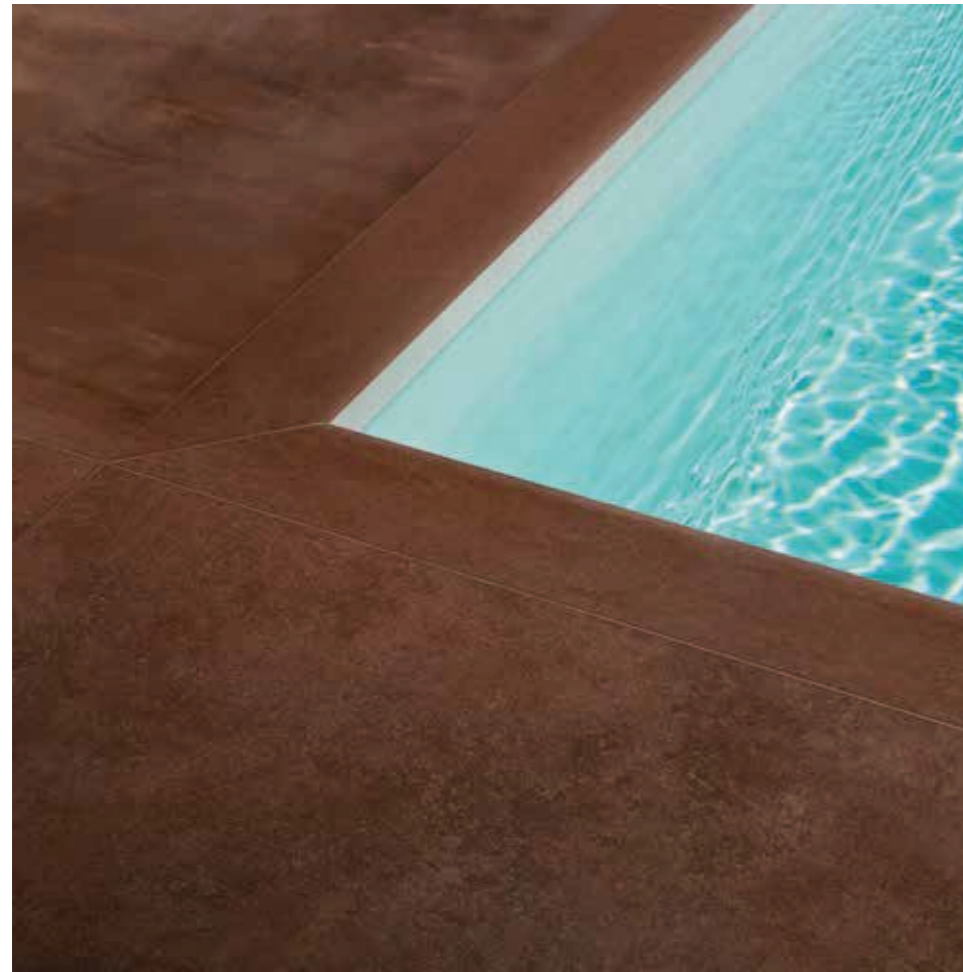


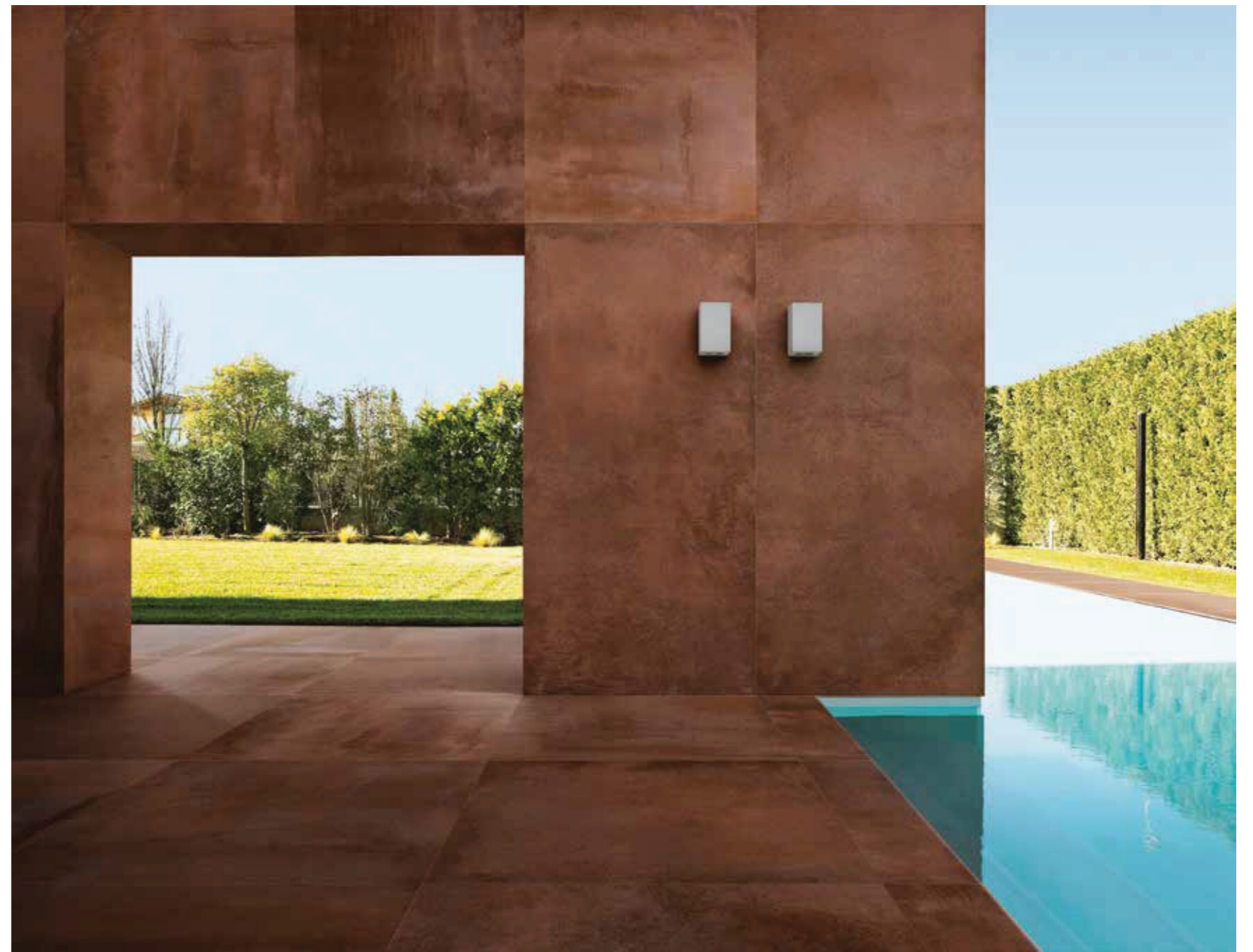
The oxidized metal effect in its most representative color reveals the contemporary spirit of a large villa with swimming pool. Corten reinforces the character of the architecture and shapes the open spaces, while inside the brightness of Aluminium expands the rooms and embellishes them with silvery reflections.





PORCELAIN SLABS WITH A THICKNESS OF 20 mm ARE HIGHLY DURABLE AND FROST-RESISTANT, MAKING THEM IDEAL FOR ALL OUTDOOR FLOORS, LIKE TERRACES, POOLSIDES, WALKWAYS, AND DRIVEWAYS.

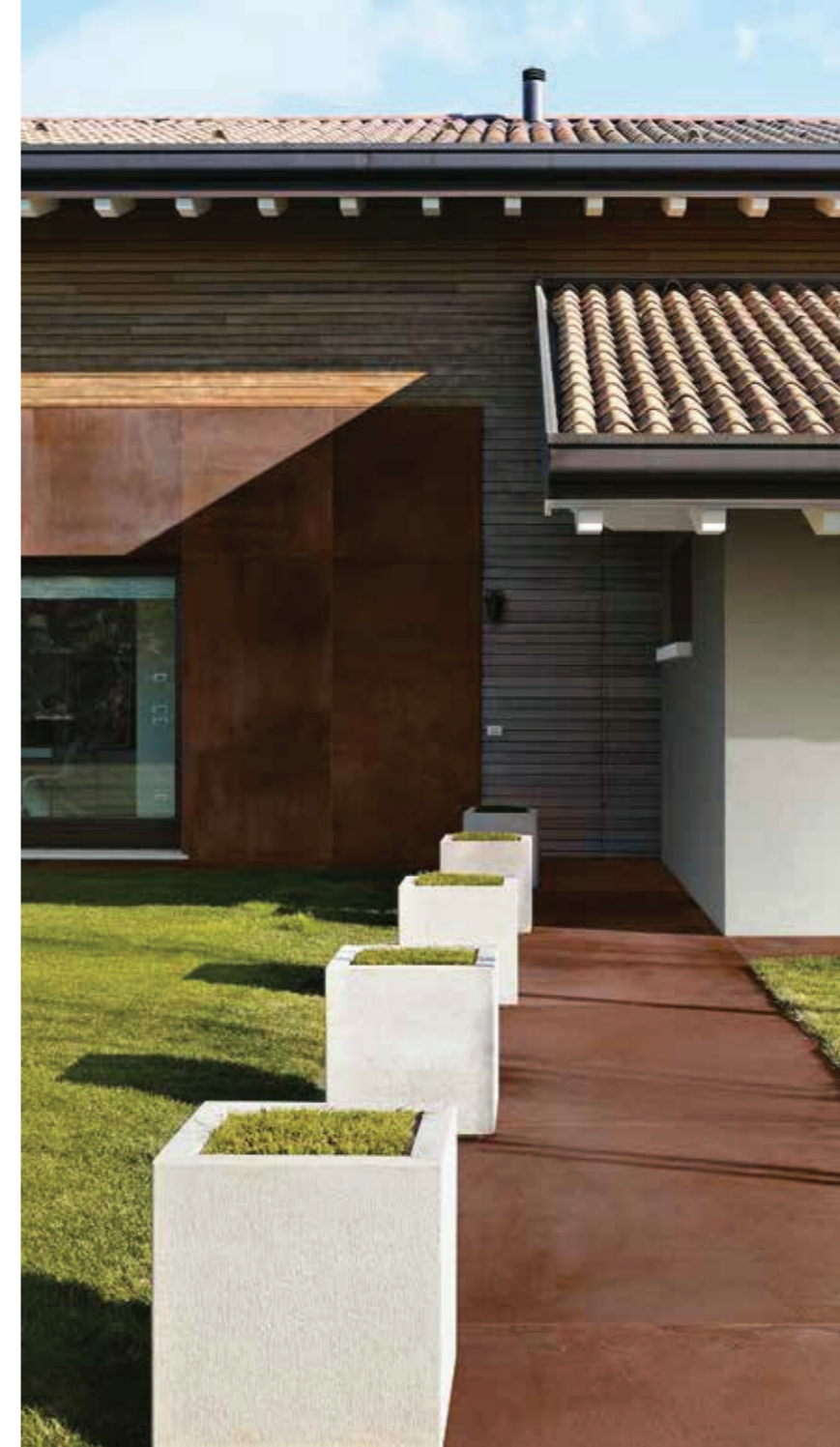




WHEN EXPOSED TO NATURAL
LIGHT, CORTEN REVEALS AN
UNEXPECTED RICHNESS OF
COLOR AND A LIVELY SURFACE,
FULL OF REFLECTIONS AND
SHIMMERING MATERIALS.



UNLIKE REAL METAL SLABS,
OXIDIZED METAL-EFFECT
PORCELAIN TILES PRESERVE THEIR
UNMISTAKABLE INDUSTRIAL
BEAUTY OVER TIME.



PORCELAIN TILES

Corten Outdoor Paving ± 20 mm 120x120 cm | 47 1/4" x 47 1/4"
Corten Matte 120x278 cm | 47 1/4" x 109 1/2"
Aluminium Matte 120x120 cm | 47 1/4" x 47 1/4"



PORCELAIN TRIM TILES

Corten Round Outdoor Paving ± 20 mm 33x120 cm | 13" x 47 1/4"
Corten Round Angolare Dx/Sx Outdoor Paving ± 20 mm 33x120 cm | 13" x 47 1/4"

ECHOES OF TIME PAST

LIVING LOFT



A double-height loft with monumental windows blending minimalism and a post-industrial conversion. Blaze adorns luminous, spacious environments with large surfaces that are a continuous succession of visual stimuli, sometimes purely graphic, sometimes linked to the colors of the various metallic looks.







WITH ITS LIGHT COLOR
STREAKED WITH SILVER,
ALUMINIUM BRINGS LIGHT INTO
ANY ROOM TOGETHER WITH
THE SENSE OF COMPOSITIONAL
FREEDOM ASSOCIATED WITH A
WHITE PALETTE.







BLAZE UNEQUIVOCALLY DEFINES THE NATURE OF ANY ENVIRONMENT, APPEARING TO SINK ITS ROOTS IN TIME, CREATING LIVED-IN INDUSTRIAL SPACES RICH IN ECHOES.



PORCELAIN TILES

Aluminium Matte 120x278 cm | 47 1/4"x109 1/2"
 Aluminium Matte 120x120 cm | 47 1/4"x47 1/4"
 Corten Matte 120x278 cm | 47 1/4"x109 1/2"
 Iron Matte 120x278 cm | 47 1/4"x109 1/2"

Boost White Atlas Plan
 Matte 162x324 cm | 63 3/4"x127 1/2"

AUTHENTIC INDUSTRIAL VIBES

LOUNGE BAR



In a trendy restaurant, the shades of Corten range from orange to rust and resonate with every detail of the interior design. The industrial mood generated by the ceramic tiles meet the minimalist elegance of the furnishings and accessories, for a venue with a bold style.







THE LARGE SQUARE
FORMAT OF THE FLOOR
TILES BREATHES LIFE INTO
THE CORTEN SURFACE,
AMPLIFYING ITS ALREADY
EXTENSIVE RANGE OF
REDDISH-BROWN SHADES.





WITH ITS REALISTIC TEXTURES AND VIVID COLORS, BLAZE GIVES EVERY ROOM THE MOST AUTHENTIC URBAN INDUSTRIAL STYLE WITH A TOUCH OF VINTAGE.



PORCELAIN TILES

Corten Matte 120x278 cm | 47 1/4" x 109 1/2"
 Corten Matte 120x120 cm | 47 1/4" x 47 1/4"
 Iron Matte 120x278 cm | 47 1/4" x 109 1/2"
 Iron Matte 120x120 cm | 47 1/4" x 47 1/4"

PORCELAIN TILE DECORS

Corten Mosaico Twin 36,1x29,4 cm | 14 1/4" x 11 5/8"



WALL TILES

BATHROOMS & RELAXATION SPACES

RESIDENTIAL
BATHROOM 74

COMMERCIAL
BATHROOM 86



THE APPEAL
OF OPPOSITES

RESIDENTIAL BATHROOM



A bathroom with a precise, chiaroscuro design based on surfaces rich in material character. Iron and Aluminium react in opposite ways to rays of light, but they combine to render the visual appeal of the oxidized metal effect more intense.







THE IRON AND ALUMINIUM
WALL TILES HAVE THE
SAME COLORS AND
GRAPHIC DESIGN AS
THE PORCELAIN
FLOOR TILES.





THE SHADED, IRREGULAR
EDGES OF THE STRIPES
DECORATION SUGGEST
THE IDEA OF RUST BUILDUP
AND GENERATE BRIGHT
METALLIC
REFLECTIONS.





EVEN IN A HOME BATHROOM THERE'S SPACE FOR THE INFINITE POTENTIAL OF BLAZE WITH ITS CONTRASTING COLORS, TEXTURED DECORATIONS, BLACK-SILVER REFLECTIONS, AND CERAMIC FURNISHINGS.



WALL TILES

Aluminium 50x110 cm | 19⁵/₈"x43¹/₄"
Iron 50x110 cm | 19⁵/₈"x43¹/₄"

WALL TILE DECORS

Iron Stripes 50x110 cm | 19⁵/₈"x43¹/₄"

WALL TRIM TILES

Iron Corner 1,4x50 cm | 5⁵/₈"x19⁵/₈"
Aluminium Corner 1,4x50 cm | 5⁵/₈"x19⁵/₈"

PORCELAIN TILES

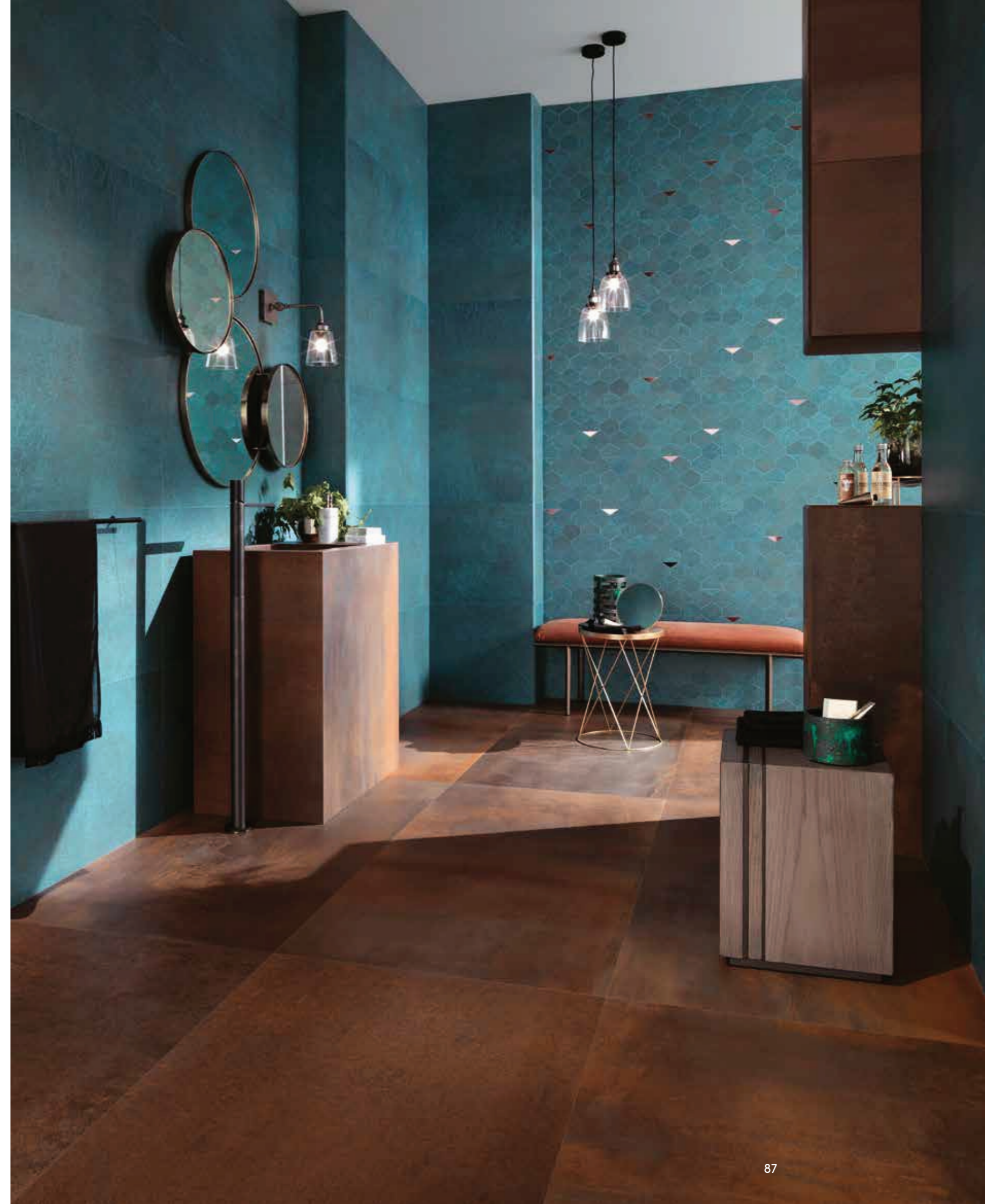
Iron Matte 75x150 cm | 29¹/₂"x59"
Aluminium Matte 75x150 cm | 29¹/₂"x59"

SOMEWHERE BETWEEN RUST AND TEAL

COMMERCIAL BATHROOM



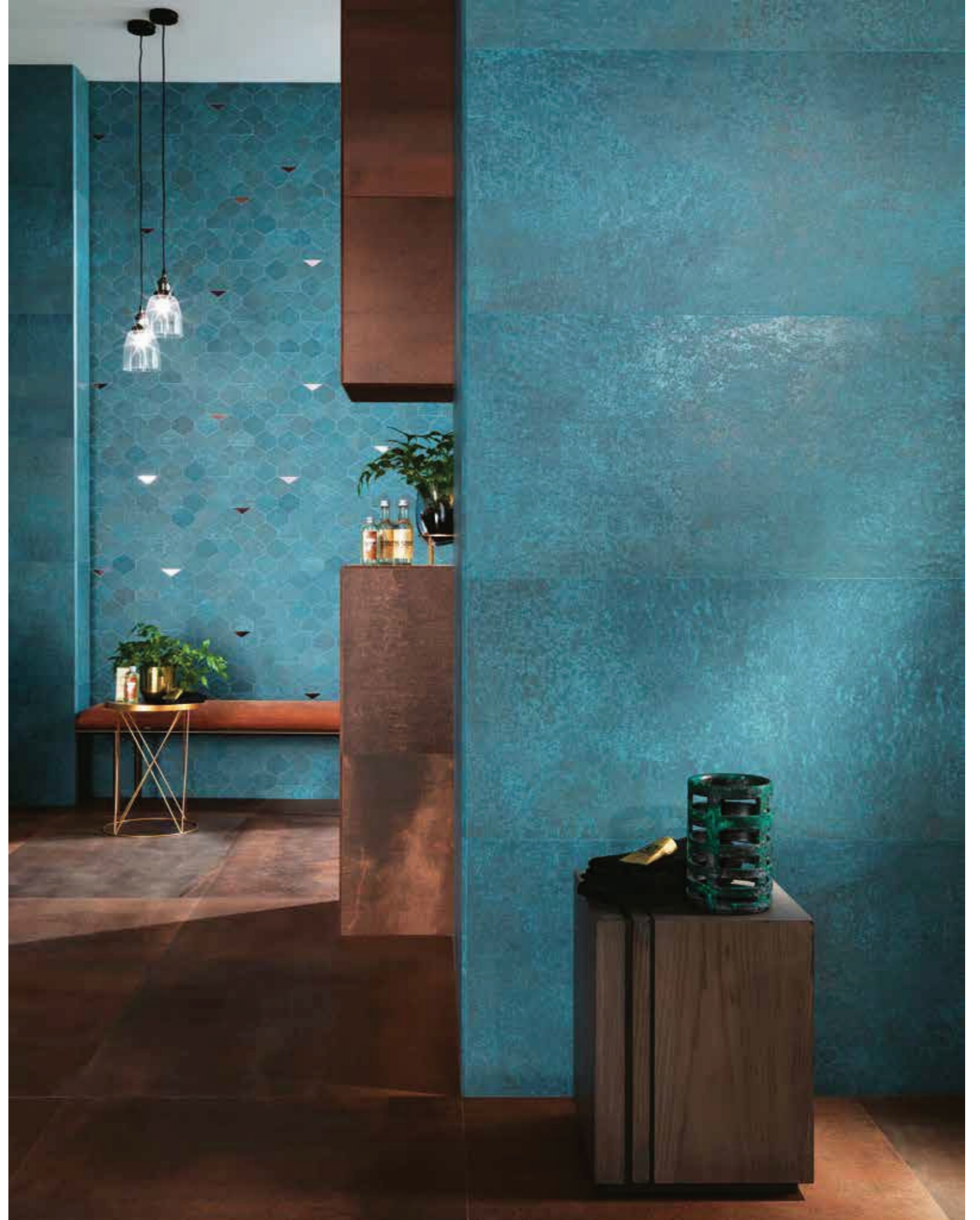
The bathroom is a treasure chest of color. With their teal shading and specks of rust that recall the flooring, the color scheme of the wall tiles surprises guests as soon as they enter. The metal total look enhances every detail of the interior design.

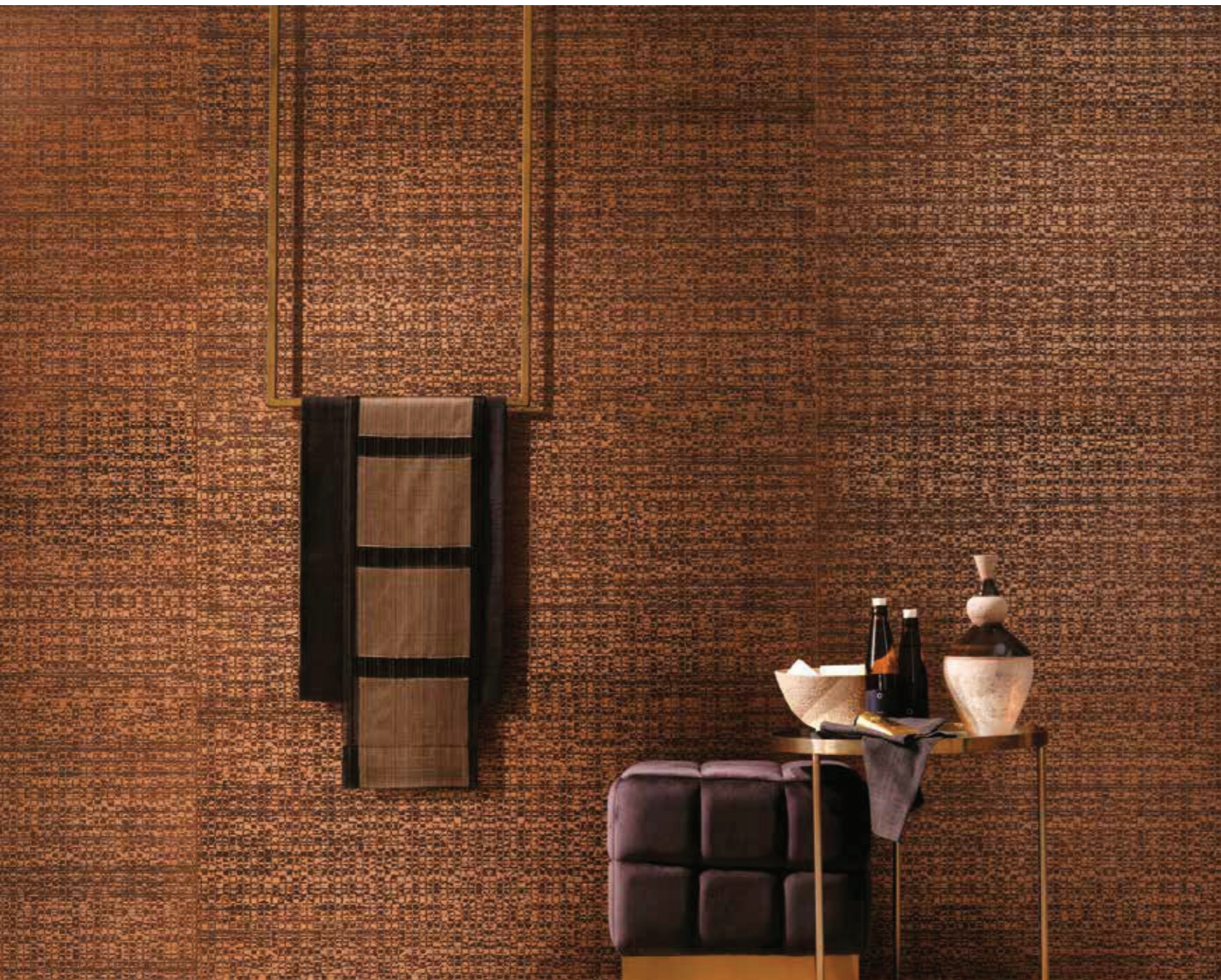






CORTEN DIFFERENTIATES THE FLOOR AND ADORNS THE WASHBASIN AND THE ARCHITECTURAL VOLUMES, BUT RETURNS WITH INSISTENCE AMONG THE RUSTY NOTES OF THE VERDIGRIS WALL TILES.





WALL TILE DECOR

Blaze Corten Texture
50x110 cm - 19⁵/₈"x43¹/₄"





THE METAL EFFECT DRAWS OUT THE
COLOR ON THE SURFACE, CONVEYING
ENERGY TO EVERY WELLNESS BREAK.



WALL TILES

Verdigris 50x110 cm | 19⁵/₈"x43¹/₄"
Corten 50x110 cm | 19⁵/₈"x43¹/₄"

WALL TILE DECORS

Verdigris Mosaico Nest 29,4x25,8 cm | 11⁵/₈"x10¹/₈"

WALL TRIM TILES

Corten Corner 1,4x50 cm | 5⁵/₈"x19⁵/₈"
Corten Corner A.E. 1,4x1,4 cm | 5⁵/₈"x5⁵/₈"
Verdigris Corner 1,4x50 cm | 5⁵/₈"x19⁵/₈"

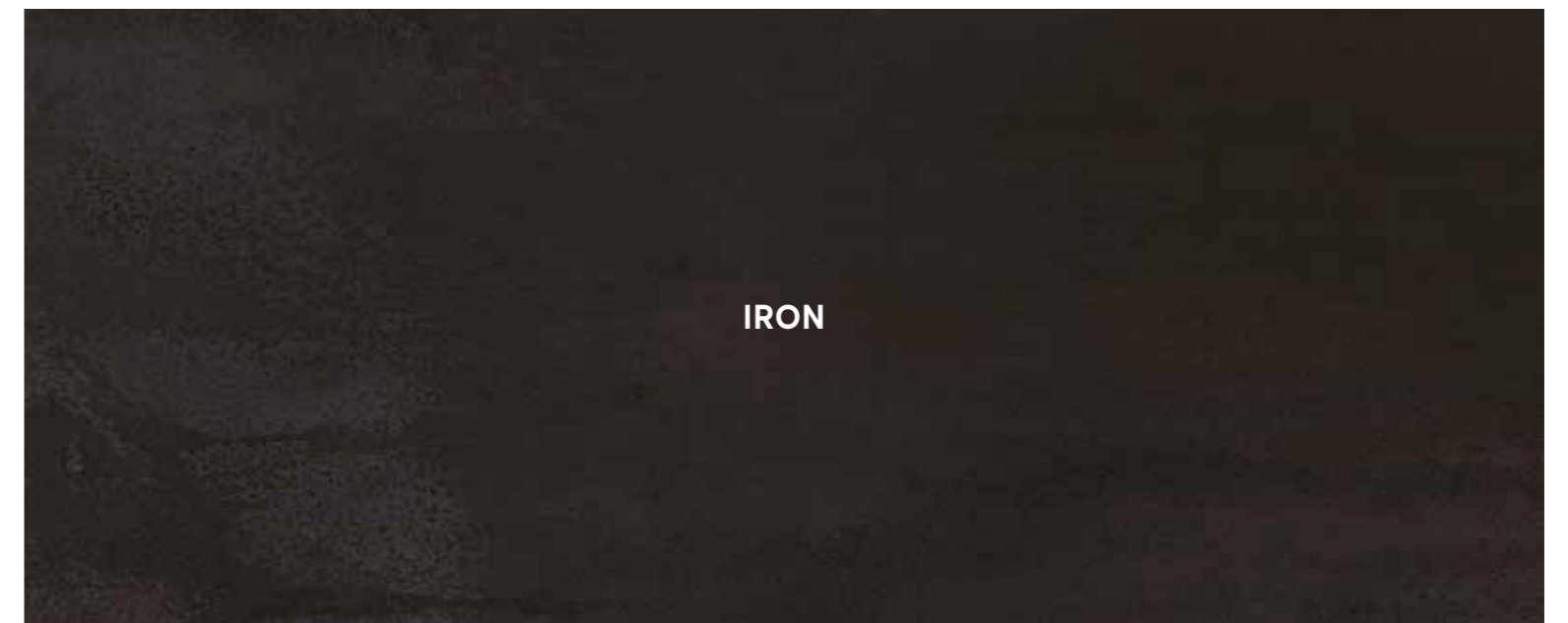
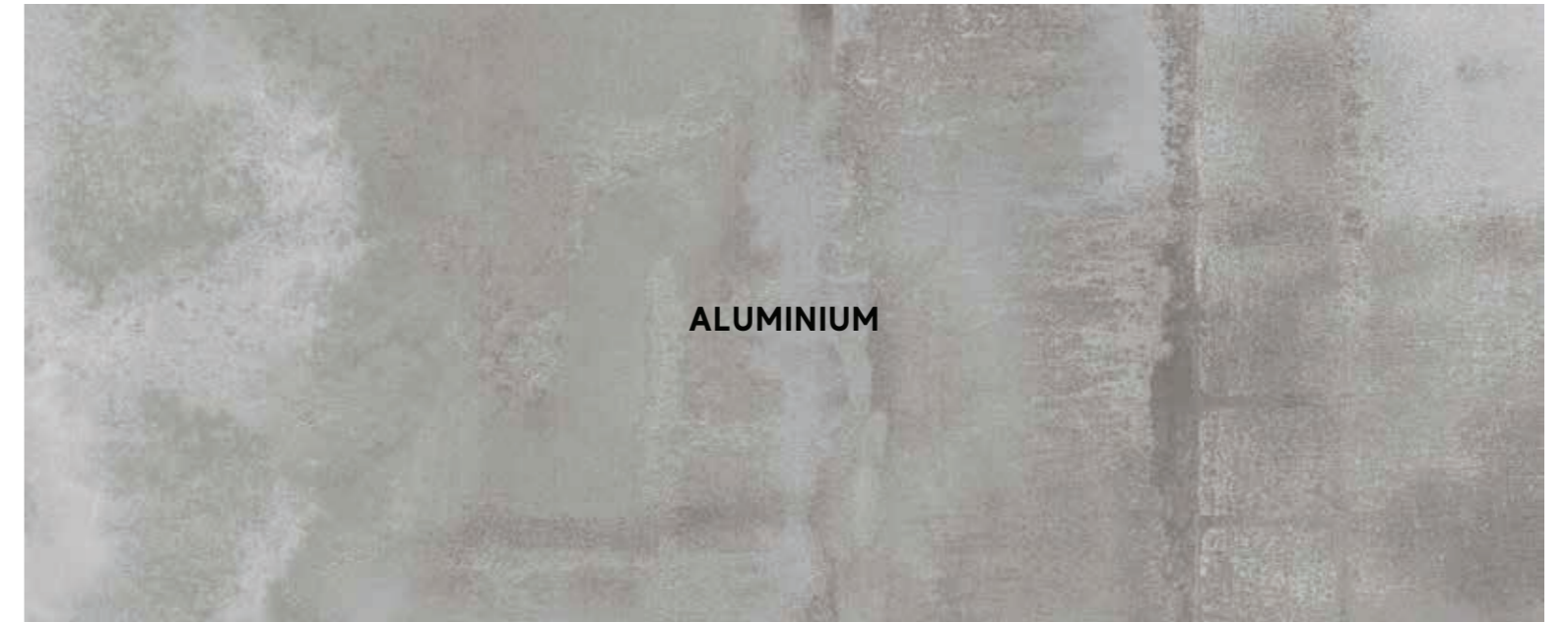
PORCELAIN TILES

Corten Matte 75x150 cm | 29¹/₂"x59"



BLAZE

Porcelain tile color range





BLAZE

Porcelain tiles

COLOURED BODY PORCELAIN TILES - RECTIFIED MONOCALIBER

Sizes and surfaces

POLISHED

75x150 cm - 29¹/₂"x59" ∇ 9,5 mm

75x75 cm - 29¹/₂"x29¹/₂" ∇ 9,5 mm

Sizes available in all colors /

MATTE

120x278 cm - 47¹/₄"x109¹/₂" ∇ 6 mm

120x120 cm - 47¹/₄"x47¹/₄" ∇ 9 mm

75x150 cm - 29¹/₂"x59" ∇ 9,5 mm

75x75 cm - 29¹/₂"x29¹/₂" ∇ 9,5 mm

37,5x75 cm - 14³/₄"x29¹/₂" ∇ 9,5 mm

Sizes available in all colors

GRIP

37,5x75 cm - 14³/₄"x29¹/₂" ∇ 9,5 mm

Size available in all colors

OUTDOOR PAVING ∇ 20 mm

120x120 cm - 47¹/₄"x47¹/₄" ∇ 20 mm

> Corten

60x60 cm - 23⁵/₈"x23⁵/₈" ∇ 20 mm

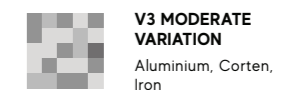
> Corten



Note on polished finish

The semi-glossy polished finish is suitable for residential or low-traffic commercial floors, where no anti-slip performance is required. The surface's shine and great ease of cleaning are the result of in-depth studies and technical research aimed at ensuring its durability over time. If the product is in direct contact with the outdoors, moisture and dirt absorption devices must be used to prevent scratching.

Color-shading / Stonalizzazione



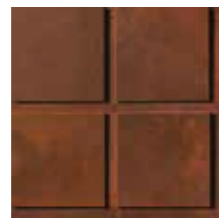
BLAZE

Porcelain tile decors

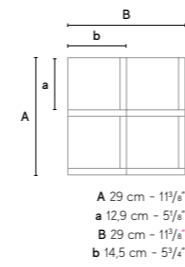
Blaze Aluminium
Mosaico 3D Factory Matte



Blaze Corten
Mosaico 3D Factory Matte



Blaze Iron
Mosaico 3D Factory Matte



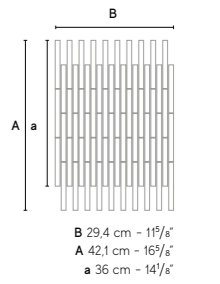
Blaze Aluminium
Mosaico Twin ± 6 mm **



Blaze Corten
Mosaico Twin ± 6 mm **



Blaze Iron
Mosaico Twin ± 6 mm **



Blaze Aluminium
Mosaico Esagono Lappato



Blaze Corten
Mosaico Esagono Lappato



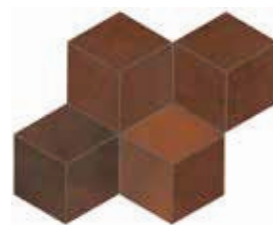
Blaze Iron
Mosaico Esagono Lappato



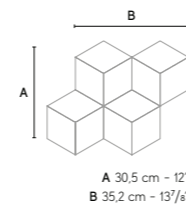
Blaze Aluminium
Mosaico Esagono Matte



Blaze Corten
Mosaico Esagono Matte



Blaze Iron
Mosaico Esagono Matte



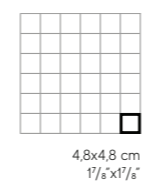
Blaze Aluminium
Mosaico Matte



Blaze Corten
Mosaico Matte



Blaze Iron
Mosaico Matte



The decoration can only be laid on the wall.

* Contains metal. The use of a common mild detergent is recommended. Avoid using acidic or alkaline products, waxes, steel wool, or abrasives.



♦ One of the six sheets in the box contains a tile with the Atlas Concorde logo.

BLAZE

Wall tiles

WHITEBODY WALL TILES - RECTIFIED MONOCALIBER

Sizes and surfaces

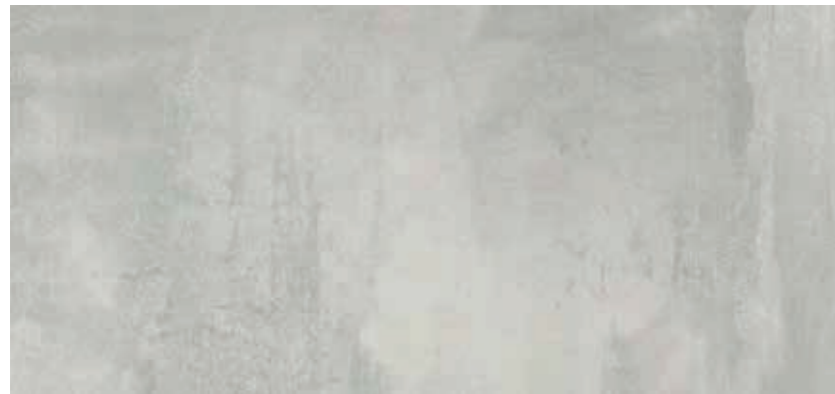
MATTE

50x110 cm - 19⁵/₈"x43¹/₄" ± 8,5 mm



Blaze Aluminium

50x110 cm - 19⁵/₈"x43¹/₄"



Blaze Iron

50x110 cm - 19⁵/₈"x43¹/₄"



Blaze Corten

50x110 cm - 19⁵/₈"x43¹/₄"



Blaze Verdigris

50x110 cm - 19⁵/₈"x43¹/₄"



Color-shading



V3 MODERATE
VARIATION
Aluminium, Corten,
Iron, Verdigris

BLAZE
Wall tile decors



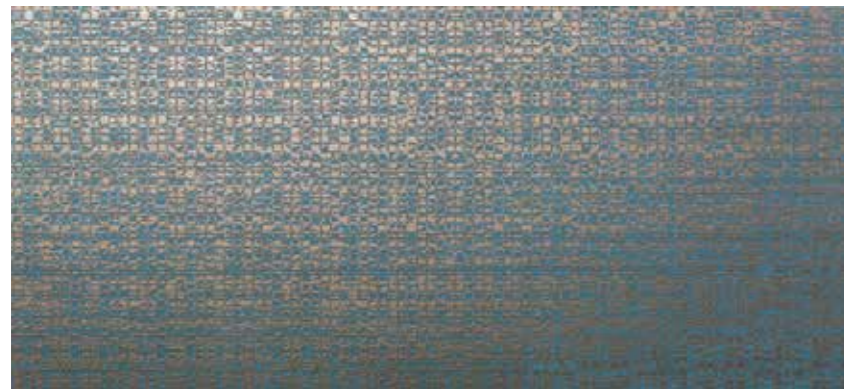
Blaze Aluminium Texture *
50x110 cm - 19⁵/₈"x43³/₄"



Blaze Corten Texture *
50x110 cm - 19⁵/₈"x43³/₄"



Blaze Verdigris Texture *
50x110 cm - 19⁵/₈"x43³/₄"



Blaze Iron Stripes *
50x110 cm - 19⁵/₈"x43³/₄"



Blaze Aluminium Mosaico Nest *
29,4x25,8 cm - 11⁵/₈"x10¹/₈"



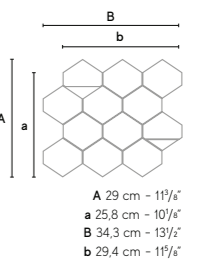
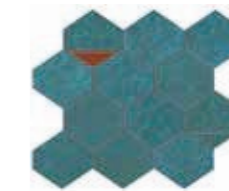
Blaze Corten Mosaico Nest *
29,4x25,8 cm - 11⁵/₈"x10¹/₈"



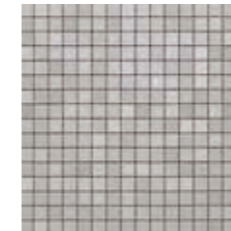
Blaze Iron Mosaico Nest *
29,4x25,8 cm - 11⁵/₈"x10¹/₈"



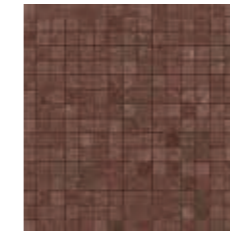
Blaze Verdigris Mosaico Nest *
29,4x25,8 cm - 11⁵/₈"x10¹/₈"



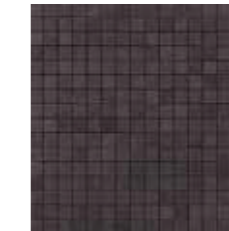
Blaze Aluminium Mosaic Q
30,5x30,5 cm - 12"x12"



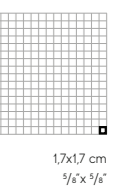
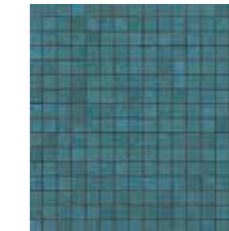
Blaze Corten Mosaic Q
30,5x30,5 cm - 12"x12"



Blaze Iron Mosaic Q
30,5x30,5 cm - 12"x12"



Blaze Verdigris Mosaic Q
30,5x30,5 cm - 12"x12"

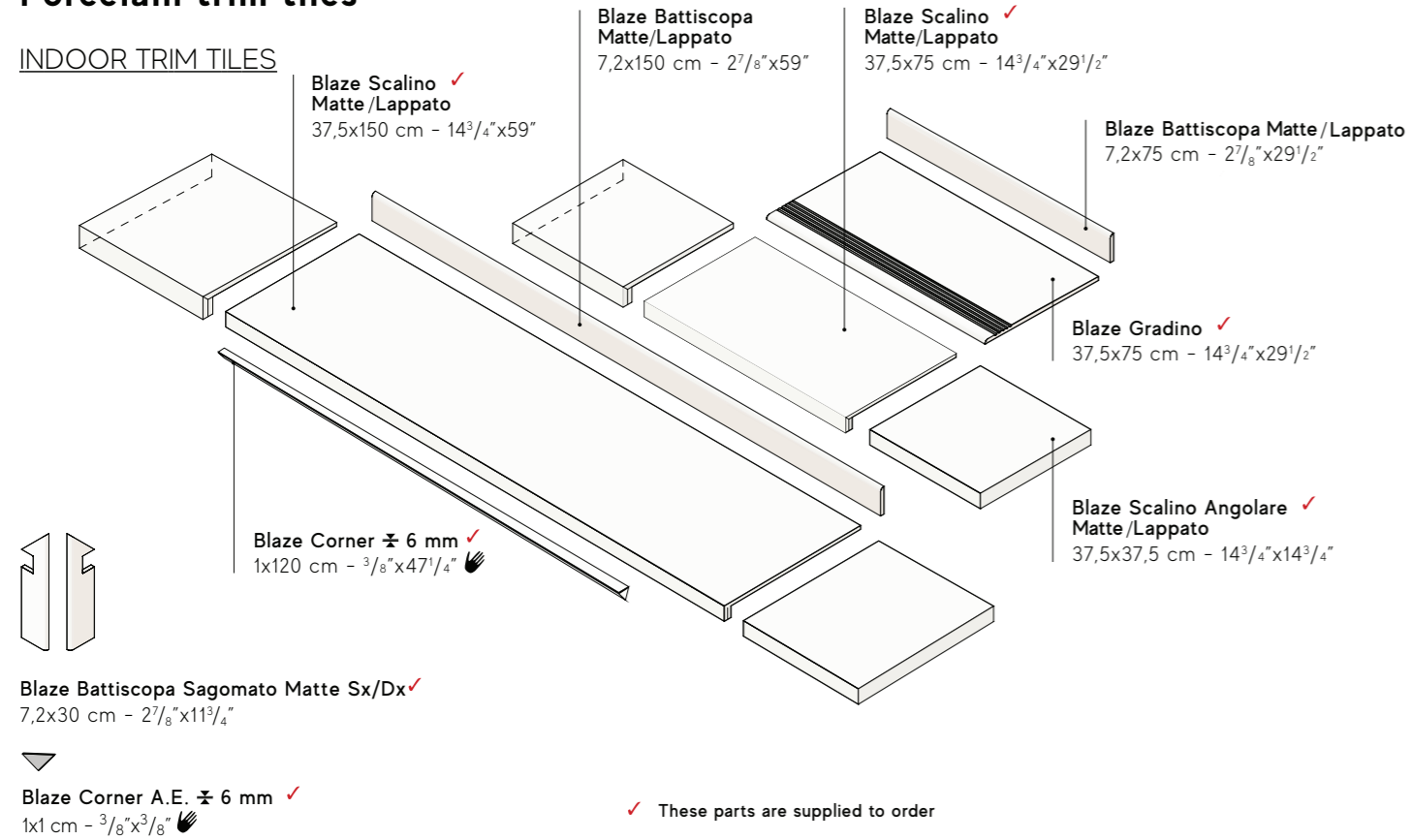


* Application of decorative materials. The use of a common mild detergent is recommended. Avoid using acidic or alkaline products, waxes, steel wool, or abrasives.

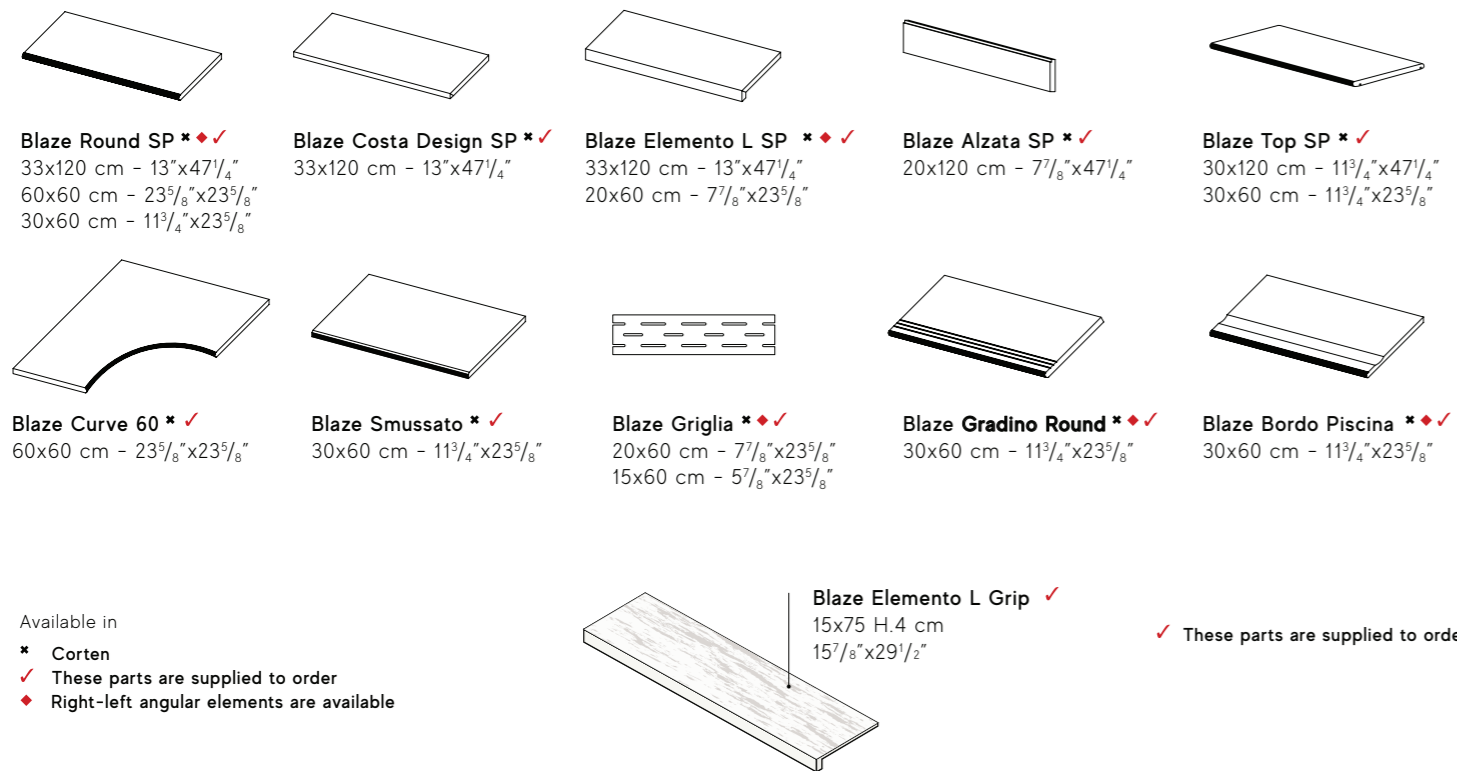
BLAZE

Porcelain trim tiles

INDOOR TRIM TILES



OUTDOOR TRIM TILES ± 20 mm



WALL TRIM TILES



WALL TILES ADDITIONAL BENEFITS

While porcelain tiles are ideal for use on the floor thanks to their hardness and extreme durability, the light weight and workability of white body tiles make them ideal for use on walls: cuts and holes can be made quickly and easily, reducing installation time and costs.

Ease of installation



Cuts, holes, and bevels are easily made and reduce the time it takes to lay the white body tiles.

Extremely easy to clean



White body ceramic tiles can be cleaned with a simple passage of hot water or neutral detergent.



CERAMIC AND PORCELAIN TILES: A SAFE CHOICE

RESISTANCE AND DURATION

Easy to maintain



Porcelain tiles do not require any special maintenance.

UV Resistant



Porcelain tiles maintain their colors even when exposed to continuous, direct sunlight or in contact with atmospheric agents or smog.

Scratch resistant



Porcelain tiles do not splinter, break or get damaged.

Easy to clean



Porcelain tiles are easy to clean.

Frost resistant



Porcelain tiles are frost resistant and therefore are not damaged by low temperatures.

Stain resistant



Porcelain tiles are waterproof, no liquid can damage the surface.

Resistant to chemicals



Porcelain tiles do not stain and resist the most aggressive chemical agents.

Resistant to acids



Porcelain tiles are resistant to acids found in food and cleaning products.

Resistant to thermal shock



A porcelain tile floor will not change as a result of sharp temperature fluctuations.

Waterproof



Porcelain tiles are completely non-porous and therefore are not damaged by water or humidity.

HEALTH

Zero VOC^S



Porcelain tiles are intrinsically inorganic and do not emit volatile organic compounds (VOC).

Zero PVC



Porcelain tiles contain no PVC, plastics or petroleum derivatives.

Zero formaldehyde



Porcelain tiles do not contain formaldehyde.

Zero allergens



Porcelain tiles are inhospitable for mites, bacteria, fungi, molds, and other irritants.

Prevent bacterial growth



Porcelain tiles are completely hygienic and inhospitable for bacteria, mites, molds, and fungi.

ENVIRONMENT

Energy efficiency



The high thermal inertia of porcelain tiles moderates the changes in temperature of the rooms, favoring energy savings.

Ecological



Porcelain tiles have a low environmental impact at all stages of their production, from the raw materials to disposal and recycling.

Recycling and re-use



Porcelain tiles are made with recycled materials, last a long time, and can be re-used because they retain their original appearance.

Ideal for floor heating systems



Porcelain tiles can be effectively combined with floor heating systems.

SAFETY

Non-slip



Porcelain tile surfaces can be made with an abrasive surface grit that can increase traction and reduce the risk of slipping.

Fire resistant



Porcelain tiles are not flammable, reduce the spread of flames, do not burn, and do not emit toxic fumes.

Heat resistant



Porcelain tiles do not change shape at high temperatures.

White-body wall tiles - Rectified monocaliber



Compliant with standards EN 14411 annex L group BIII
Compliant with standards ISO 13006 annex L group BIII

50x110 cm - 19 5/8" x 43 1/4" ± 8,5 mm

Technical features	Test Method	Requirements for nominal size N		
		7 cm ≤ N < 15 cm	N ≥ 15 cm	
		(mm)	(%)	(mm)
Length and width	ISO 10545-2	± 0,75 ⁽¹⁾	± 0,5 ⁽¹⁾	± 2,0 ⁽¹⁾
Thickness		± 0,5 ^(1*)	± 10 ^(1*)	± 0,5 ^(1*)
Straightness of sides		± 0,5 ^(1**)	± 0,3 ^(1**)	± 1,5 ^(1**)
Rectangularity		± 0,75 ^(1***)	± 0,5 ^(1***)	± 2,0 ^(1***)
Surface flatness		c.c. + 0,75 - 0,50 e.c. + 0,75 - 0,50 w. ± 0,75	c.c. + 0,5 - 0,3 e.c. + 0,5 - 0,3 w. ± 0,5	c.c. + 2,0 - 1,5 e.c. + 2,0 - 1,5 w. ± 2,0
Water absorption (in% by mass)	ISO 10545-3	Average >10%. When the average > 20%, this shall be indicated. Individual value > 9%		
Breaking strength	ISO 10545-4	S ≥ 600 N		
Modulus of rupture		R ≥ 15 N/mm ²		
Coefficient of thermal linear expansion	ISO 10545-8	Declared value		
Thermal shock resistance	ISO 10545-9	Pass according to EN ISO 10545-1		
Moisture expansion (in mm/m)	ISO 10545-10	Declared value		
Crazing resistance	ISO 10545-11	Pass according to EN ISO 10545-1		
Bond strength/adhesion for improved cementitious adhesives	EN 1348	Declared value		
Reaction to fire	-	Class A1		
Resistance to household chemicals and swimming pool salts	ISO 10545-13	Minimum Class B		
Resistance to low concentrations of acids and alkalis		Declared Class		
Resistance to high concentrations of acids and alkalis		Declared Class		
Resistance to staining, for unglazed tiles	ISO 10545-14	Minimum Class 3		
Release of dangerous substances: Cadmium (in mg/dm ²) and Lead (in mg/dm ²)	ISO 10545-15	Declared value		

⁽¹⁾ The permissible deviation, in % or mm, of the average size for each tile (2 or 4 sides) from work size (WS).
^(1*) The permissible deviation, in % or mm, of the average thickness for each tile from the work size thickness (WS).
^(1**) The maximum permissible deviation from straightness, in % or mm, related to the corresponding work sizes (WS).
^(1***) The maximum permissible deviation from rectangularity, in % or mm, related to the corresponding work sizes (WS).
c.c. The maximum permissible deviation from centre curvature, in % or mm, related to diagonal calculated from the work sizes (WS).
e.c. The maximum permissible deviation from edge curvature, in % or mm, related to the corresponding work sizes (WS).
w. The maximum permissible deviation from warpage, in % or mm, related to diagonal calculated from the work sizes (WS).

Coloured body porcelain tiles - Rectified monocaliber



Compliant with standards EN 14411 annex G group Bla
Compliant with standards ISO 13006 annex G group Bla

120x278 cm - 47 1/4" x 109 1/2" ± 6 mm
120x120 cm - 47 1/4" x 47 1/4" ± 9 mm
75x150 cm - 29 1/2" x 59" ± 9,5 mm
75x75 cm - 29 1/2" x 29 1/2" ± 9,5 mm
37,5x75 cm - 14 3/4" x 29 1/2" ± 9,5 mm

120x120 cm - 47 1/4" x 47 1/4" ± 20 mm
60x60 cm - 23 3/8" x 23 3/8" ± 20 mm

Technical features	Test Method	Requirements for nominal size N		
		7 cm ≤ N < 15 cm	N ≥ 15 cm	
		MM	(%)	(mm)
Length and width	ISO 10545-2	± 0,9 ⁽¹⁾	± 0,6 ⁽¹⁾	± 2,0 ⁽¹⁾
Thickness		± 0,5 ^(1*)	± 5 ^(1*)	± 0,5 ^(1*)
Straightness of sides		± 0,75 ^(1**)	± 0,5 ^(1**)	± 1,5 ^(1**)
Rectangularity		± 0,75 ^(1***)	± 0,5 ^(1***)	± 2,0 ^(1***)
Surface flatness	ISO 10545-2	c.c. ± 0,75 e.c. ± 0,75 w. ± 0,75	c.c. ± 0,5 e.c. ± 0,5 w. ± 0,5	c.c. ± 2,0 e.c. ± 2,0 w. ± 2,0
Water absorption (in% by mass)	ISO 10545-3 ASTM C373-18	E _v ≤ 0,5% Individual Maximum 0,6% Requirement ANSI A137.1-2017 Water absorption max ≤ 0,5%		
Breaking strength	ISO 10545-4	S ≥ 700N (for thickness < 7,5 mm - per spessore < 7,5 mm) S ≥ 1300N (for thickness ≥ 7,5 mm - per spessore ≥ 7,5 mm)		
Modulus of rupture		R ≥ 35 N/mm ²		
Bending strength and breaking load	EN 1339 Annex F	-		
Impact resistance, as coefficient of restitution	ISO 10545-5	Declared value		
Mohs hardness	EN 101	-		
Resistance to deep abrasion of unglazed tiles (removed volume)	ISO 10545-6	≤ 175 mm ³		
Coefficient of thermal linear expansion	ISO 10545-8	Declared value		
Thermal shock resistance	ISO 10545-9	Pass according to EN ISO 10545-1		
Moisture expansion (in mm/m)	ISO 10545-10	Declared value		
Frost resistance	ISO 10545-12	Pass according to EN ISO 10545-1		
Bond strength/adhesion for improved cementitious adhesives	EN 1348	Declared value		
Reaction to fire	-	Class A1 or A1 _s		
Resistance to household chemicals and swimming pool salts	ISO 10545-13	Minimum Class B		
Resistance to low concentrations of acids and alkalis		Declared Class		
Resistance to high concentrations of acids and alkalis		Declared Class		
Resistance to staining, for unglazed tiles	ISO 10545-14	Declared Class		
Shod Ramp Test	DIN 51130	Declared value		
Barefoot Ramp Test	DIN 51097	Declared value		
Pendulum Friction Test	BS 7976	PTV ≥ 36 classifies the surface as "low slip risk"		
	AS 4586	Declared Classification of the new pedestrian surface materials according to the Pendulum Test		
Coefficient of friction (COF)	UNE-ENV 12633	Declared value		
	B. C. R. A. Rep. CEC/81	D. M. 236/89 del 14/06/89 μ > 0,40 per elemento scivolante cuoio su pavimentazione asciutta μ > 0,40 per elemento scivolante gomma dura su pavimentazione bagnata		
Dynamic coefficient of friction (DCOF)	ANSI A137.1	ANSI A.137.1-2017 Requires a minimum value of 0.42 for level interior space expected to be walked upon when wet. (3)		

⁽¹⁾ The permissible deviation, in % or mm, of the average size for each tile (2 or 4 sides) from work size (WS).
^(1*) The permissible deviation, in % or mm, of the average thickness for each tile from the work size thickness (WS).
^(1**) The maximum permissible deviation from straightness, in % or mm, related to the corresponding work sizes (WS).
^(1***) The maximum permissible deviation from rectangularity, in % or mm, related to the corresponding work sizes (WS).
c.c. The maximum permissible deviation from centre curvature, in % or mm, related to diagonal calculated from the work sizes (WS).
e.c. The maximum permissible deviation from edge curvature, in % or mm, related to the corresponding work sizes (WS).
w. The maximum permissible deviation from warpage, in % or mm, related to diagonal calculated from the work sizes (WS).
(1). Determination of slip resistance of pedestrian surfaces; it does not cover sports surfaces and road surfaces for vehicles (skid resistance).
(2). Anti-slip performance is guaranteed at the time of delivery of the product.
(3). However, tiles with a DCOF of 0.42 or greater are not necessarily suitable for all projects. The specifier shall determine tiles appropriate for specific project conditions, considering by way of example, but not in limitation, type of use, traffic, expected contaminants, expected maintenance, expected wear, and manufacturers' guidelines and recommendations.
(4). For further details, please refer to outdoor design general catalogue.
(5). Only for products with 20 mm thickness.
(e). PTV ≥ 36 Wet on demand
(●●). P3 on demand
(●●●). C2 on demand

Porcelain tiles				
Matte	Matte 120x278 ± 6 mm	Grip	Polished	Outdoor paving ± 20 mm
± 0,3% ± 1,0 mm	± 0,3% ± 1,0 mm	± 0,3% ± 1,0 mm	± 0,3% ± 1,0 mm	± 0,3% ± 1,0 mm
± 5,0% ± 0,5 mm	± 5,0% ± 0,5 mm	± 5,0% ± 0,5 mm	± 5,0% ± 0,5 mm	± 5,0% ± 0,5 mm
± 0,3% ± 0,8 mm	± 0,3% ± 0,8 mm	± 0,3% ± 0,8 mm	± 0,3% ± 0,8 mm	± 0,3% ± 0,8 mm
± 0,3% ± 1,5 mm	± 0,3% ± 1,5 mm	± 0,3% ± 1,5 mm	± 0,3% ± 1,5 mm	± 0,3% ± 1,5 mm
± 0,4% ± 1,8 mm	± 0,4% ± 1,8 mm	± 0,4% ± 1,8 mm	± 0,3% ± 1,5 mm	± 0,4% ± 1,8 mm
≤ 0,1 %	≤ 0,1 %	≤ 0,1 %	≤ 0,1 %	≤ 0,1 %
≤ 0,5 %	≤ 0,5 %	≤ 0,5 %	≤ 0,5 %	≤ 0,5 %
S ≥ 1500 N R ≥ 40 N/mm ²	S ≥ 1000 N R ≥ 40 N/mm ²	S ≥ 1500 N R ≥ 40 N/mm ²	S ≥ 1500 N R ≥ 40 N/mm ²	S ≥ 10000 N R ≥ 45 N/mm ² ≥ T11 120x120 60x60
-	-	-	-	-
≥ 0,55	≥ 0,55	> 0,55	≥ 0,55	≥ 0,55
6	6	8	5	8
≤ 150 mm ³	≤ 150 mm ³	≤ 150 mm ³	≤ 150 mm ³	≤ 150 mm ³
≤ 7MK ⁻¹	≤ 7MK ⁻¹	≤ 7MK ⁻¹	≤ 7MK ⁻¹	≤ 7MK ⁻¹
Resistant	Resistant	Resistant	Resistant	Resistant
≤ 0,01% (0,1mm/m)	≤ 0,01% (0,1mm/m)	≤ 0,01% (0,1mm/m)	≤ 0,01% (0,1mm/m)	≤ 0,01% (0,1mm/m)
Resistant	Resistant	Resistant	Resistant	Resistant
≥ 1,0 N/mm ² (Class C2 - EN 12004)	≥ 1,0 N/mm ² (Class C2 - EN 12004)	≥ 1,0 N/mm ² (Class C2 - EN 12004)	≥ 1,0 N/mm ² (Class C2 - EN 12004)	≥ 1,0 N/mm ² (Class C2 - EN 12004)
A1 - A1 _s	A1 - A1 _s	A1 - A1 _s	A1 - A1 _s	A1 - A1 _s
A	A	A	A	A
LA	LA	LA	LA	LA
HA	HA	HA	-	HA
5	5	5	5	5
R10	R9	R11	N.C.	R11
A+B	A	A+B+C	0	A+B+C
≥ 36 Dry ≥ 36 Wet	(●)	≥ 36 Dry ≥ 36 Wet	≥ 36 Dry ≥ 24 Wet	≥ 36 Dry ≥ 36 Wet
Class P3	(●●)	Class P4	-	Class P4
Class C2	(●●●)	Class C3	-	Class C3
> 0,40 Asciutto > 0,40 Bagnato	> 0,40 Asciutto > 0,40 Bagnato	> 0,40 Asciutto > 0,40 Bagnato	> 0,40 Asciutto > 0,40 Bagnato	> 0,40 Asciutto > 0,40 Bagnato
> 0,42 Wet	> 0,42 Wet	> 0,42 Wet	> 0,42 Wet	> 0,42 Wet

