

Fluted Back Straight Stack Art & Education

Case Study in Brick
Amant, Brooklyn NY

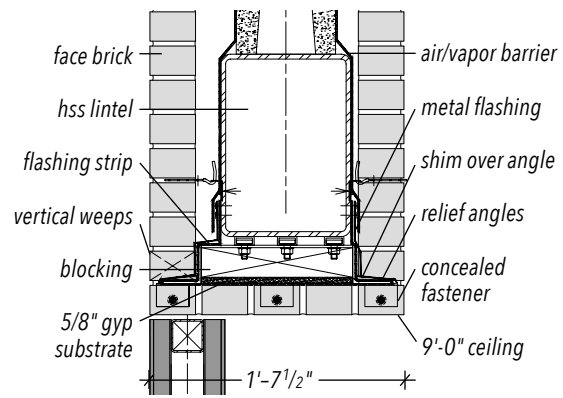
November 20, 2021 -
March 11, 2022

Gala Porras-Kim
Precipitation for an Arid Landscape



vestibule at street, fluted backs

The Amant campus extends across three blocks in rapidly changing, industrial North Brooklyn, with artist studios, galleries, offices, storage, and a cafe. Acme's Perla clay brick is installed using all its faces, especially including the fluted "back" of the brick. Turned to staccato effect, its irregular and dense verticals render any sense of running bond meaningless. A result is to create buildings as unified volumes, not assembled planes with recognizable patterns. Contrasting stack bond in transitions and interior spaces show the versatility of the Perla brick and its remarkable ability to mimic both the gritty industrial noise outside and the clean, quiet gallery inside, simply by changing exterior faces.



concealed lintel system detail

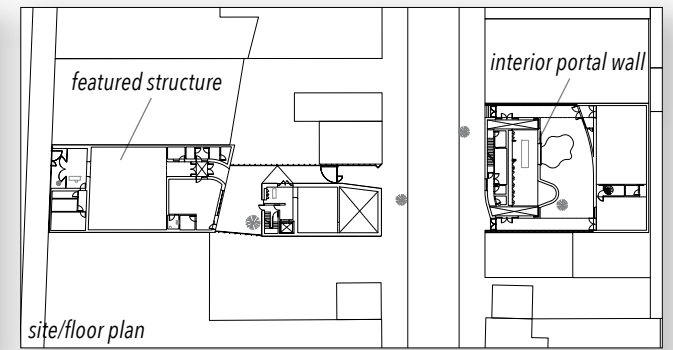


interior portal wall across campus, stack bond, concealed lintel

Novel Texture for a Mini-Campus Amid Industrial Transition



model view of campus structures



site/floor plan



"We like how the reverse side of this brick erases the running bond pattern to create an abstracted texture when seen from a distance. Up close, the fluted backs reveal the processes of production, including the fabrication number stamps, which appear as notations and marks on the clay. As one enters, the curved walls use the smooth face of the full-depth brick—a transition from outside noise to a visually quiet white box gallery space, foregrounding the exhibitions within."

— Kevin Lamyuktseung, Project Manager, SO-IL.org



angled courtyard elevation, fluted backs

Amant Brooklyn, NY

client Lonti Ebers

design architects SO-IL

architect of record Andrew Reyniak

project manager Paratus Group

structural Silman Associates

MEP CES Engineering, Plus Group Engineering

lighting Buro Happold Engineering

cladding consultant Simpson Gumpertz & Heger

civil Bohler Engineering

expediter J. Callahan Consulting, Inc.

acoustics / AV / security Harvey Marshall Berling

concrete Reginald Hough Associates

geotechnical Langan Engineering, PMT Laboratories

landscape Future Green

graphics Linked by Air

photography Naho Kubota

artist works in photographs Gala Porras-Kim

awards MASTerworks Best New Building,

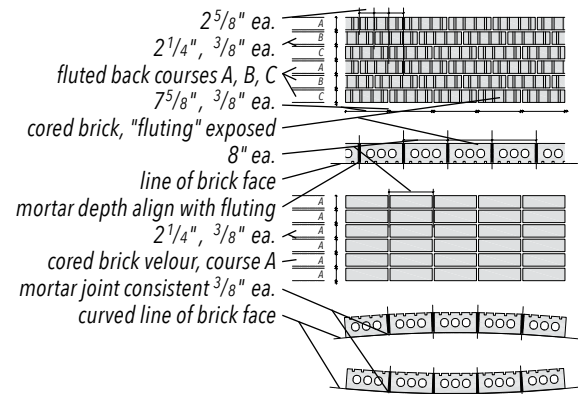
Architecture Master Prize Best in Best of

Cultural Architecture 2021

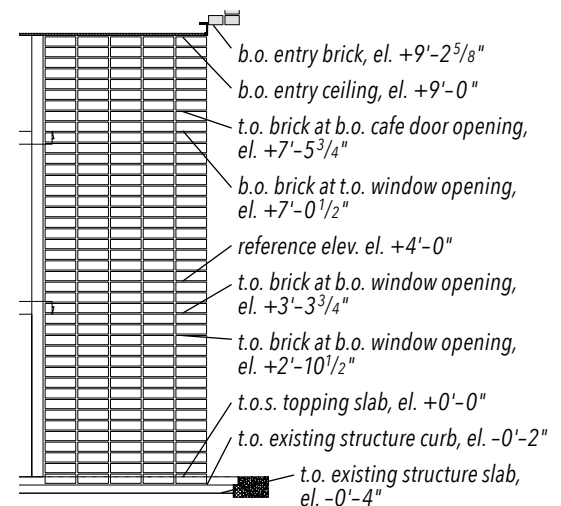
Acme Brick Perla Steele Gray Modular Velour



view to courtyard,
stack bond curves



elevation and plan details at fluted wall, curved stack-bond walls



elevation detail at stack-bond wall