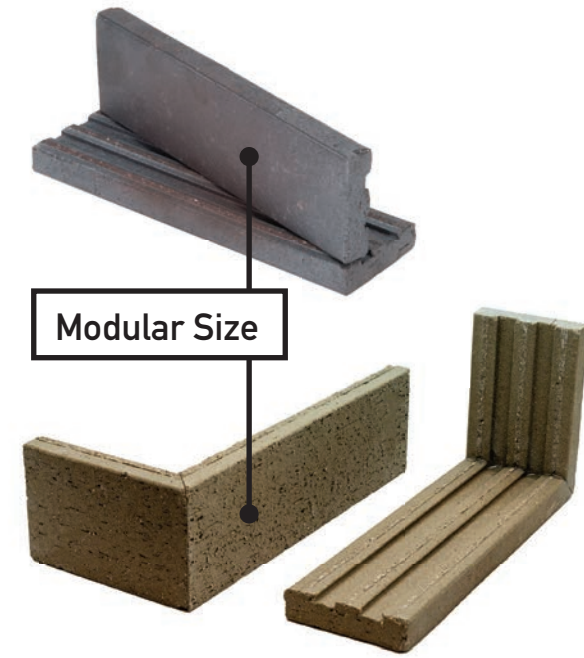
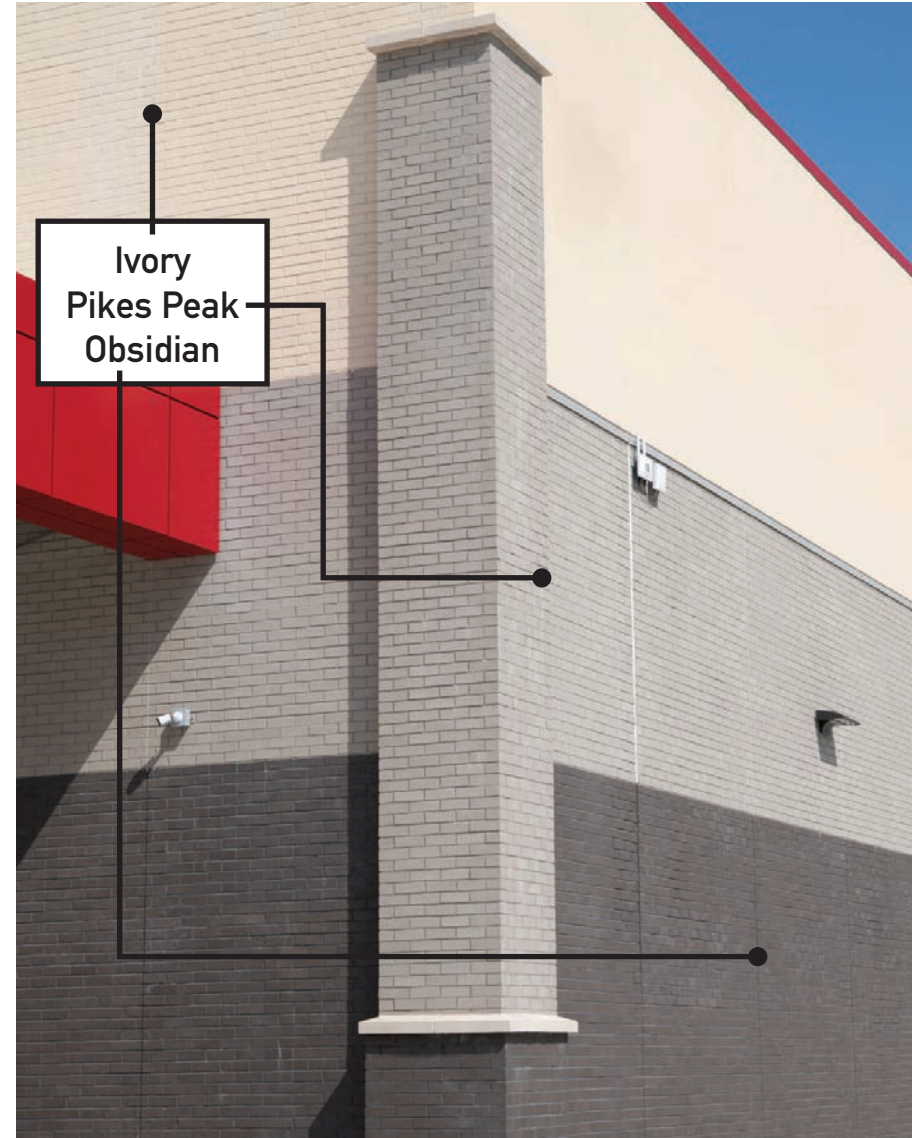
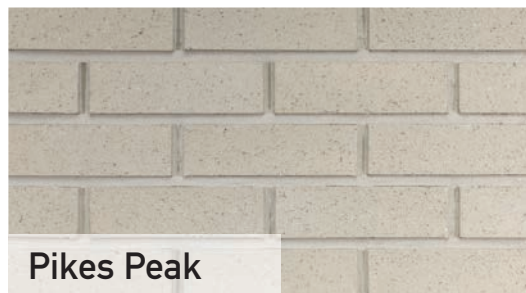




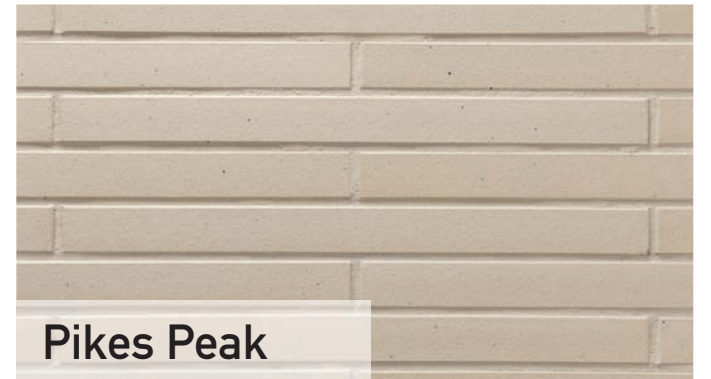
## STANDARD COLORS

These modular 7 5/8" x 2 1/4" thinBRICK™ are extruded units, with the added benefit of dovetail slots on the back. They are compatible with formliner systems, or with lightweight metal panel systems where brick are secured with a thinset system and then finished with traditional mortar. Corners are available in this size.

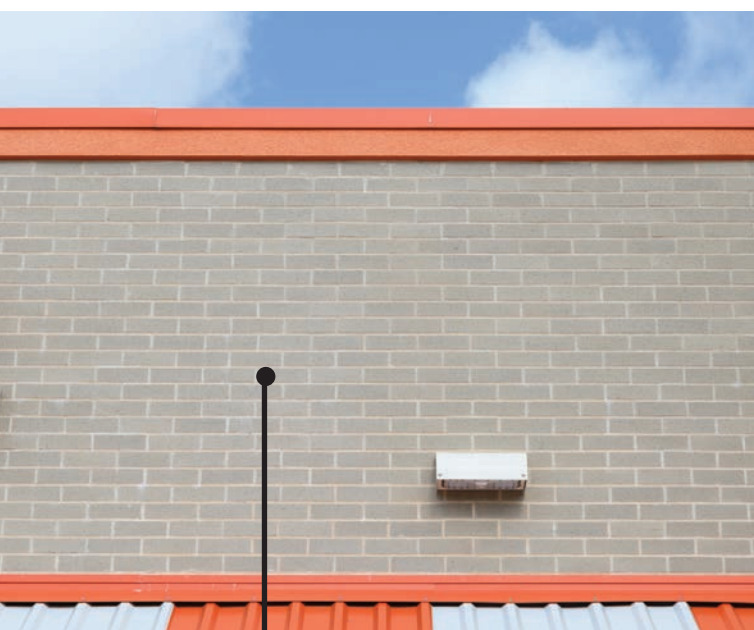


## ROMAN PLUS COLORS

Our flat thinBRICK™ also come in an extra large size, 19 5/8" x 1 5/8", for a modern clean look with fewer mortar joints.







Pikes Peak

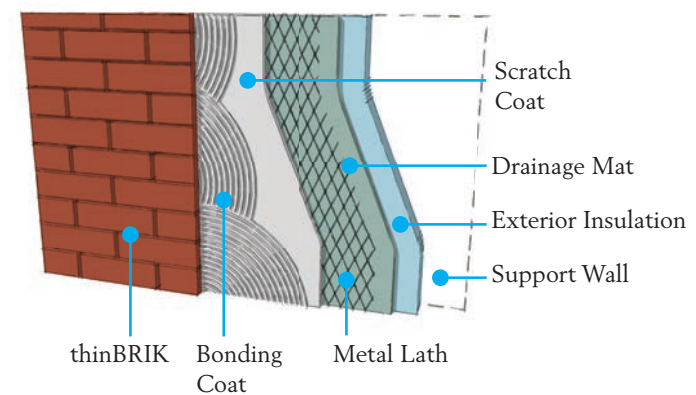


## thinBRiK™ APPLICATIONS

These are recommendations only for typical applications. Always follow the requirements of your local codes and manufacturers recommendations. For more information visit [brick.com/tn28c](http://brick.com/tn28c)

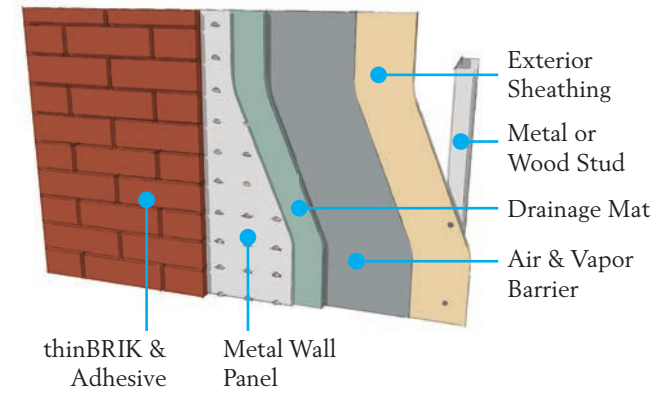
### Thick Set Mortar System

Over Exterior Insulation



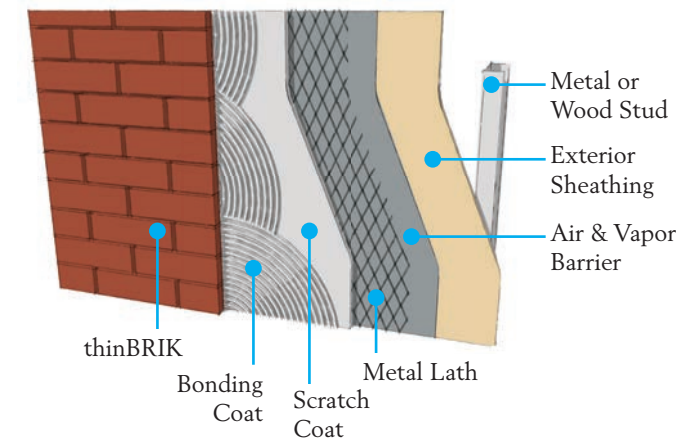
### Modular Panel System

Over Stud Wall



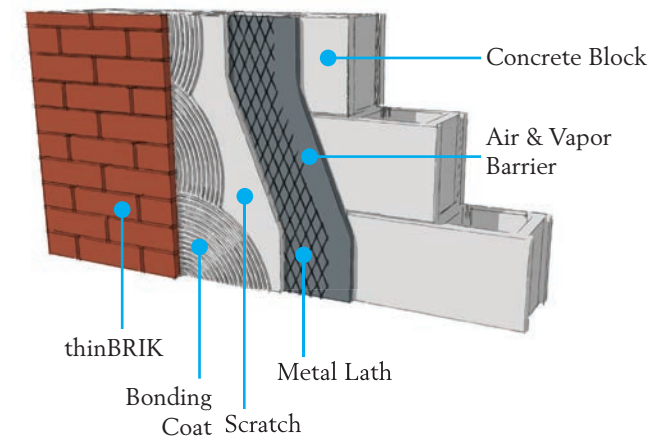
### Thick Set Mortar System

Over Stud Wall



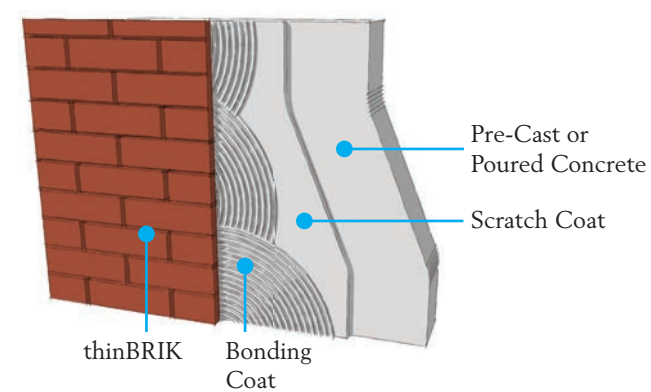
### Thick Set Mortar Bed System

Over CMU Wall

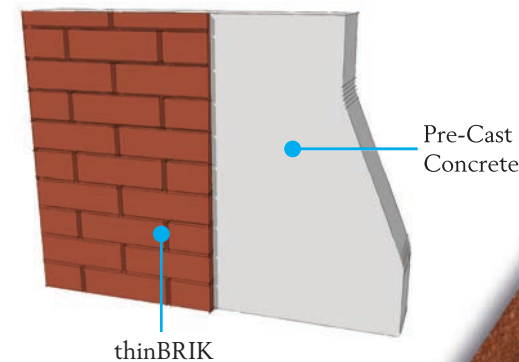


### Thin Set Mortar System

Over Concrete Wall



### Pre-Cast Wall System



[brick.com/cityscape](http://brick.com/cityscape)

Cover Image: Four colors mingled on the jobsite.

rev 01192021

# CityScape

thinBRiK

Pikes Peak

Rushmore

Obsidian

La Sal Dark