



MB SENTINEL



BOX GOBBLER WALL INSERT

Stopping Package Theft
in style

817-592-0735 | mbsentinel.com

WHAT HOMEOWNERS LOVE

KEYPAD ACCESS

Top quality storm interface controller combined with Stainless Steel Southco Electronic Rotary Latch offers top security

CONVEYOR ROLLERS

Food Grade PVC with Stainless Steel Axle and Bearings

R8 DOOR PANEL INSULATION

2" K-Flex Insulation with durable cover plate maintains heating and cooling efficiencies



DETAILS YOU NEED

DOOR FRAME MATERIAL

1/8-inch Aluminum

METAL ROLLER BOTTOM ASSEMBLY

12-gauge Stainless Steel

DOOR PANEL

Door Panel Cover: ABS 06 Black HC

Handle: 12-gauge Stainless Steel

Door Bumpers: 3/4-inch rubber attached with 2 Stainless Steel
1/4-20 Button Head Screws

100% Interior Door Flange Seal using Resilient Polyurethane
Foam Strip with Adhesive

Hammer Powder Coat Finish: see options below

Marine Grade Nylon Torque Hinges

POWER REQUIREMENTS

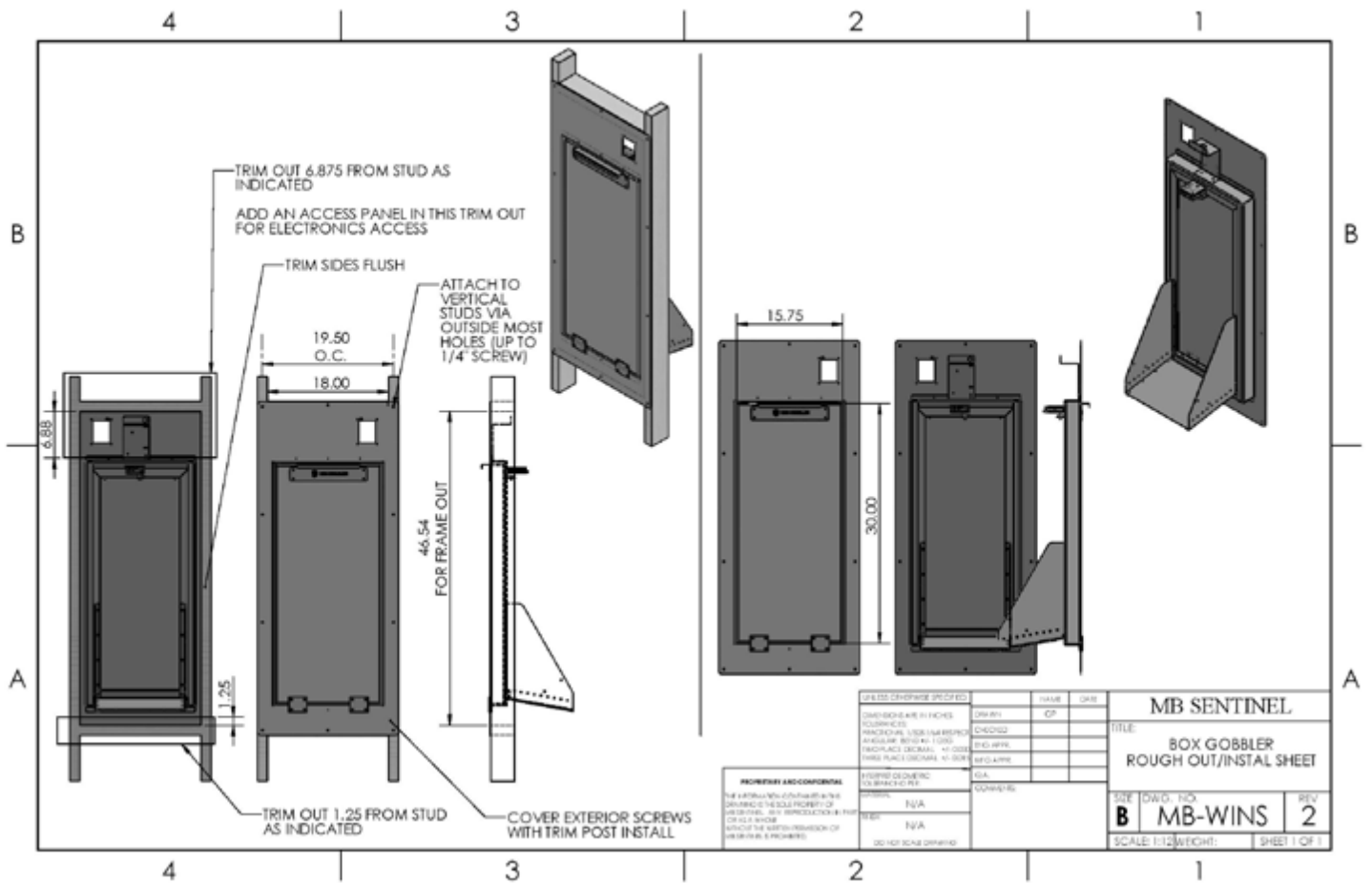
110-volt AC Circuit: connects to our terminal block from the top
right side when facing the rear

Cover Plate: hides the power block for a clean finish (not shown)

Wire Harness: manufactured in the USA to meet UL and ULC
standards



EASY INSTALLATION



LOSS PREVENTION PACKAGING

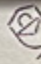
Box 1: door, frame and rear cover plate (protection tape guards against scratches, abrasion and paint overspray)

Box 2: roller bottom, keypad, lock & tech plate are pre-assembled

Install Time: 30 minutes or less

The door and frame ship fully assembled with a heavy zip tie to keep the door closed during framing. The pre-assembled roller bottom with the electronic lock and tech plate ship in a second box to be installed during the trim-out phase. All hardware for assembly is included for an easy and organized install.



 Box Gobbler

SHIPPING

Single units ship UPS Ground

Pallets ship LTL Freight FOB

8 units will fit on a pallet



MB SENTINEL

CALL NOW

817-592-0735

Talk with one of our security experts
about installing a Box Gobbler parcel
safe in your next home.