



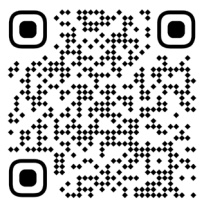
# POLYMAC PANEL

Rediscover Polymac  
from different angles



**MAC**  
METAL ARCHITECTURAL

THE SAME PROFILE, INFINITE DESIGN POSSIBILITIES!



Unleash your creativity with MAC Metal's Polymac profile. The strength of this panel's design lies not only in its adjustability and flexibility, but also in the complementary accessories available. The Polymac panel is the most effective and affordable option on the market.

Use the U-Trim molding for a stacked installation or the Offset Junction molding for a counter-joint installation. Discover the many ways in which this profile can be installed, and let your imagination run wild!

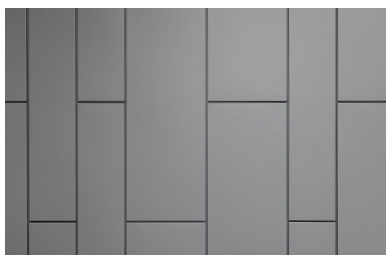
## BRING YOUR BOLDEST IDEAS TO LIFE

INSTALLATION PATTERNS

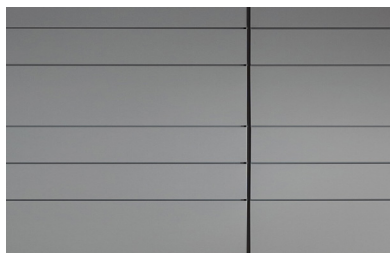
Vertical stack installation



Vertical counter-joint installation



Horizontal stack installation



Horizontal counter-joint installation



CHARACTERISTICS



40-year warranty



Made from 86% recycled steel,  
100% recyclable at end of life



Premium quality pre-painted  
galvanized steel from Canada



Maintenance-free



Unique, rich colors



Contribution of up to  
8 LEED points



Meets the most stringent  
tests in the industry





**MAC**  
METAL ARCHITECTURAL



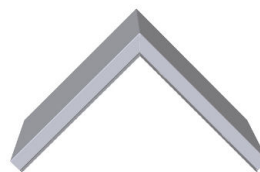
## SPECIFICATIONS



Panel  
12 x 48 in & 12 x 72 in



Panel  
20 x 48 in & 20 x 72 in



Corner Panel  
12 x 12 x 12 in



Corner Panel  
12 x 12 x 20 in

### DIMENSIONS

#### STANDARD SIZE

SPPG24.12X48 | 12 x 48 in (304.8 x 1219.2 mm)  
SPPG24.12X72 | 12 x 72 in (304.8 x 1828.8 mm)  
SPPG24.20X48 | 20 x 48 in (508 x 1219.2 mm)  
SPPG24.20X72 | 20 x 72 in (508 x 1828.8 mm)

#### CORNER PANEL

SPCG24.12 | 12 x 12 x 12 in (304.8 x 304.8mm)  
SPCG24.20 | 12 x 12 x 20 in (508 x 304.8mm)

#### VENTED PANEL

SVPPG24.12X48 | 12 x 48 in (304.8 x 1219.2mm)  
SVPPG24.12X72 | 12 x 72 in (304.8 x 1828.8mm)

### MOLDINGS

M15P | U-Trim molding

M18P12.10 & M18P20.10 | Offset Junction molding

MXXP.10 | W-Trim

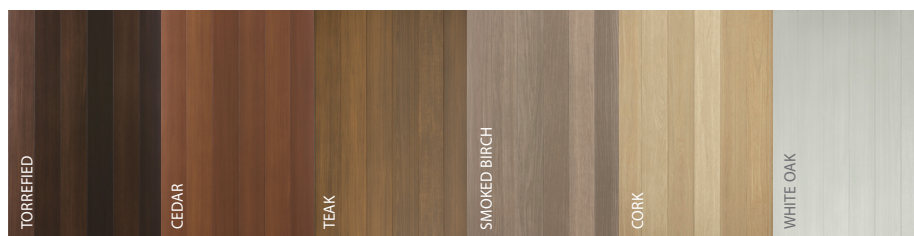
M01P | J Trim finishing molding

The Polymac panel is compatible with our Versa molding series. For more information, please refer to the molding catalog available on our website.

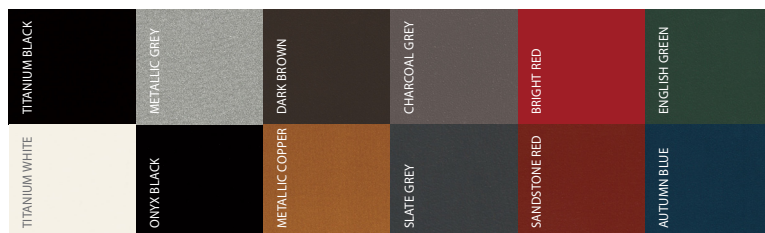
The Polymac panel is offered in boxes in a range of standard sizes.

## AVAILABLE COLORS

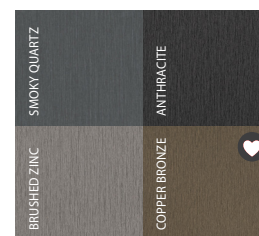
### WOOD Collection



### INSPIRATION Collection



### SIGNATURE Collection



Colors with rich, unique finishes that fantastically reproduce the look and appearance of wood or noble materials.

The colors printed in this sample board are for information purposes only and may vary slightly from the actual color.

Distributed by

