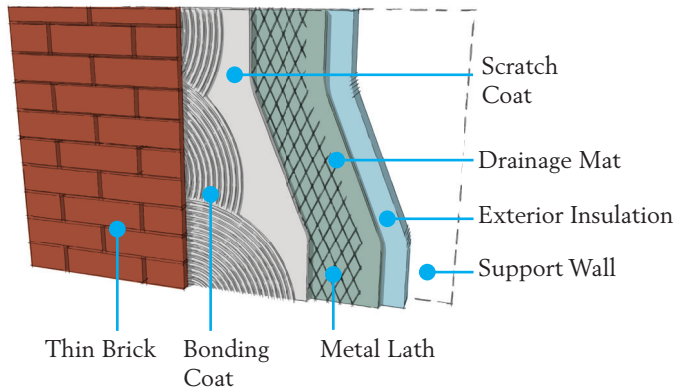
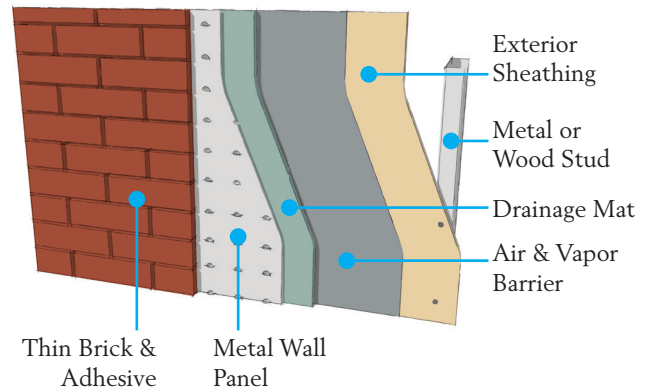


THIN BRICK APPLICATIONS

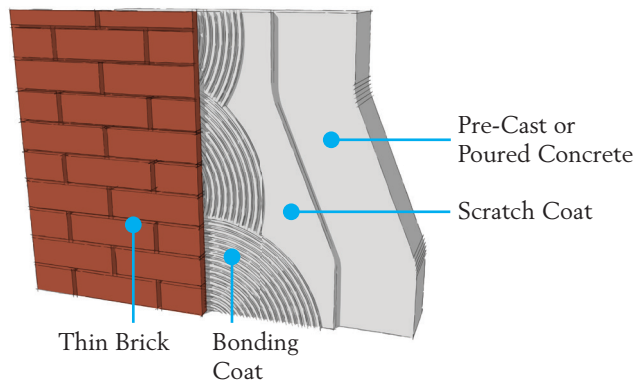
THICK SET MORTAR SYSTEM
Over Exterior Insulation



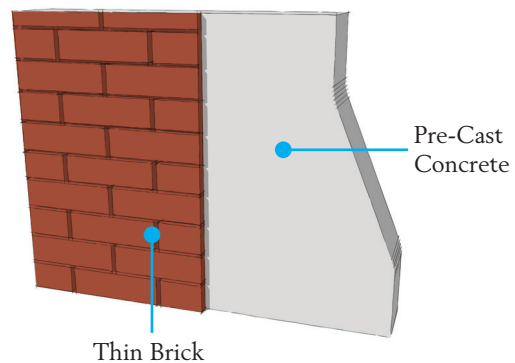
MODULAR PANEL SYSTEM
Over Stud Wall



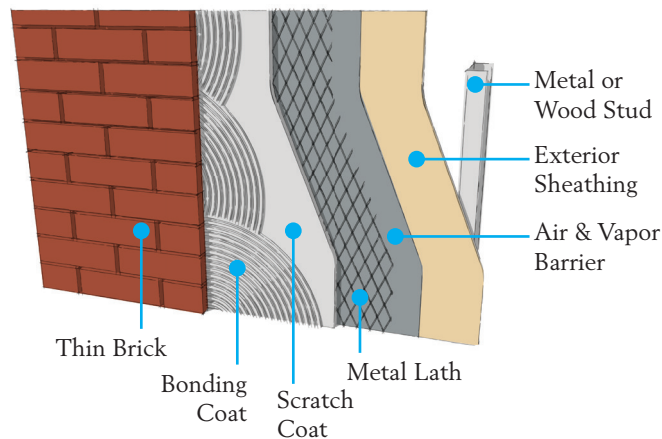
THIN SET MORTAR SYSTEM
Over Concrete Wall



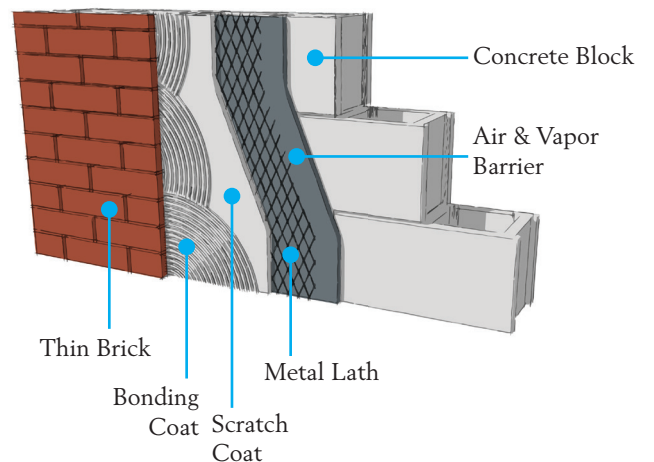
PRE-CAST WALL SYSTEM



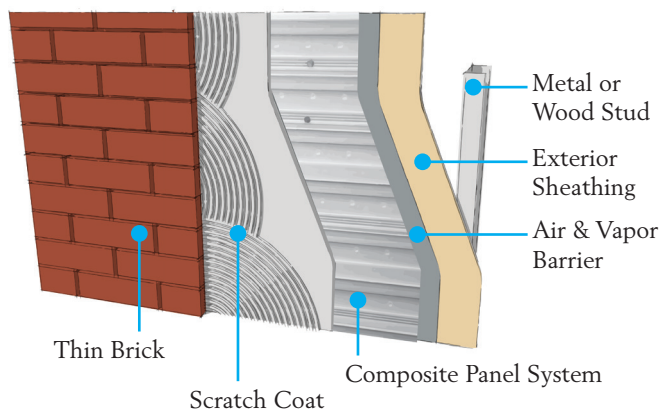
THICK SET MORTAR SYSTEM
Over Stud Wall



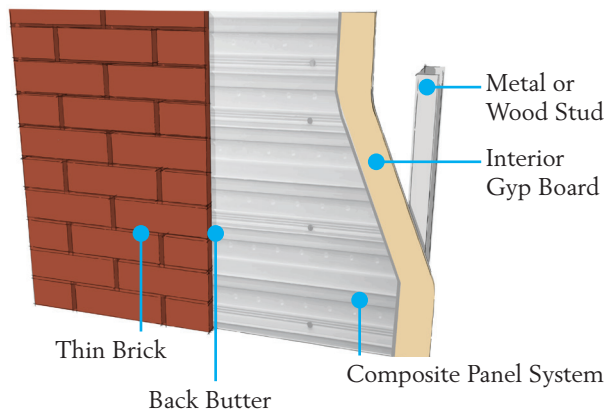
THICK SET MORTAR BED SYSTEM
Over CMU Wall



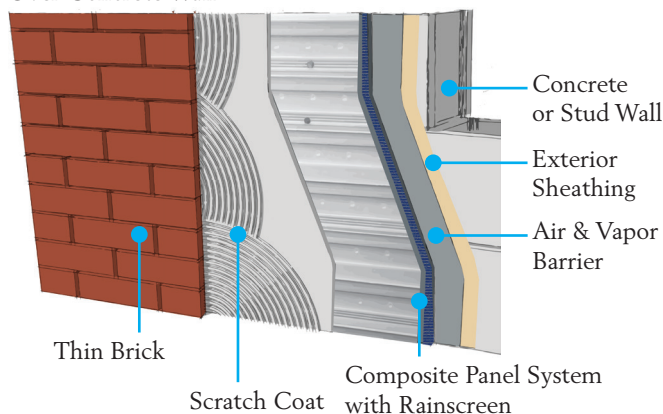
SPEEDYMASON™ SYSTEM EXTERIOR APPLICATION Over Stud Wall



SPEEDYMASON™ SYSTEM INTERIOR APPLICATION Over Stud Wall



SPEEDYMASON™ EXTERIOR RAINSCREEN APPLICATION Over Concrete Wall



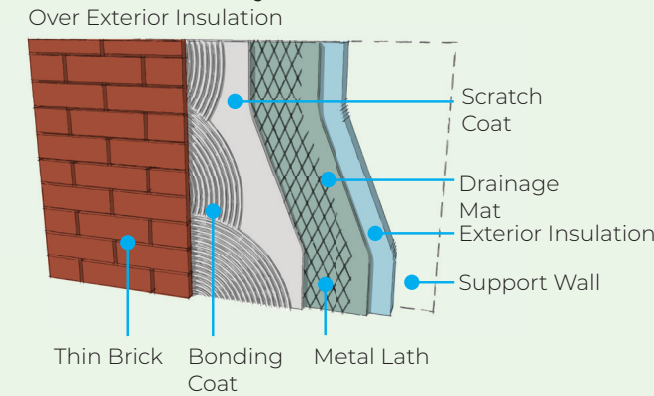
INSTALLATION METHOD	RECOMMENDED MATERIALS	SPECIAL CONSIDERATIONS	Thin Brick - Sawn for commercial & residential use - varies in thickness	Thin Brick - Extruded typically for commercial use, flexible applications	Thin Brick - Kerfed Extruded commercial use only, embedded in precast concrete
THICK SET	Mortar: Type N or Latex-Modified	Follow mortar manufacturer's instructions for thickness of bond coat and other brick setting requirements.	●	●	
THIN SET	Mortar: Latex-Modified	Follow mortar manufacturer's instructions for thickness of bond coat and other brick setting requirements.	●	●	
MODULAR PANELS	Mortar: Type N or Latex-Modified Panels & Adhesive: Per Panel Manufacturer Instructions	Check Thin Brick thickness tolerances for panel system. In the absence of guidelines, maximum tolerance of $\pm 1/16$ th inch is recommended.		●	
PRE-CAST PANELS	Verify Brick System Requirements Form Liner: Architectural Polymers, Innovative Brick Systems LLC, Advanced Formliners LLC	PCI compliance may be required. In some cases, PCI dimensional tolerances have been waived when products meet all other testing requirements.	●	●	●



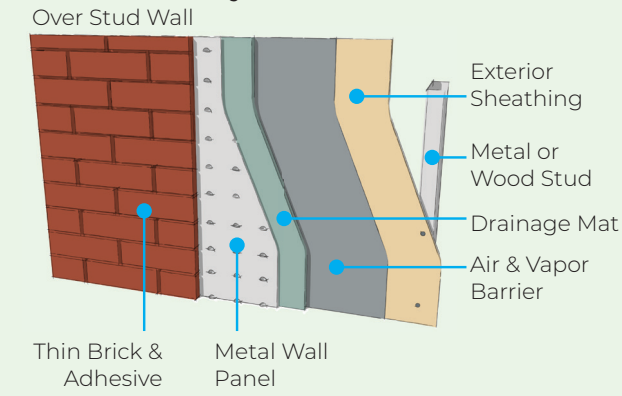
These are recommendations only for typical applications. Always follow the requirements of your local codes and manufacturers recommendations. For more information visit www.gobrick.com/docs/default-source/read-research-documents/technicalnotes/28c-thin-brick-veneer.pdf

Generic Thin Brick Applications

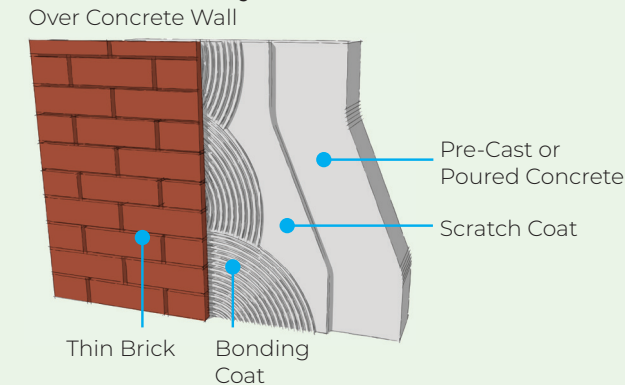
Thick Set Mortar System



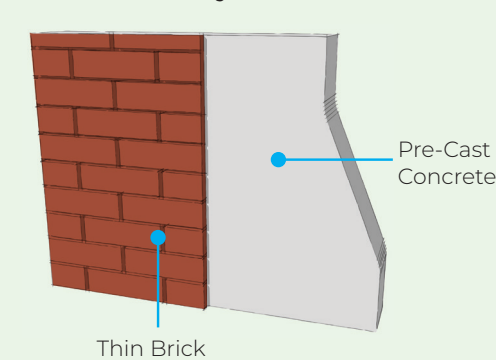
Modular Panel System



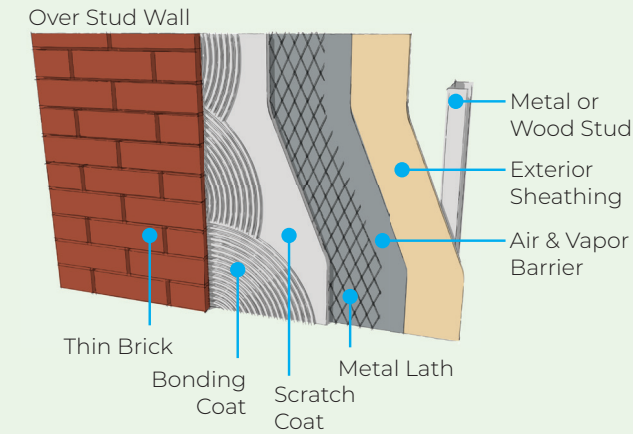
Thin Set Mortar System



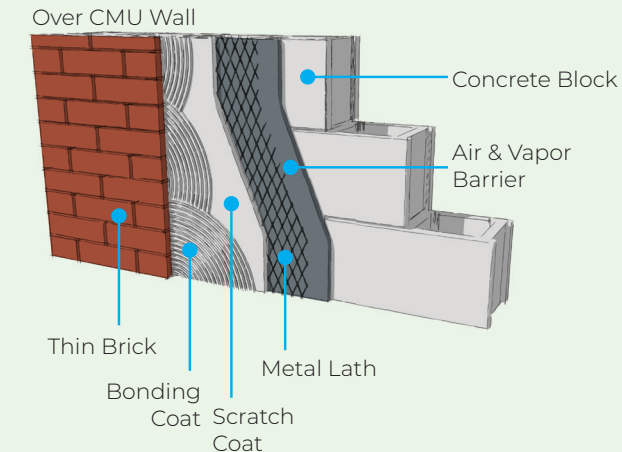
Pre-Cast Wall System



Thick Set Mortar System



Thick Set Mortar Bed System



Installation Method	Recommended Materials	Special Considerations	Sawn	Extruded	Kerfed Extruded
Thick Set	Mortar: Type N or Latex-Modified	Follow mortar manufacturer's instructions for thickness of bond coat and other brick setting requirements.	●	●	
Thin Set	Mortar: Latex-Modified	Follow mortar manufacturer's instructions for thickness of bond coat and other brick setting requirements.	●	●	
Modular Panels	Mortar: Type N or Latex-Modified Panels & Adhesive: Per Panel Manufacturer Instructions	Check Thin Brick thickness tolerances for panel system. In the absence of guidelines, maximum tolerance of $\pm 1/16$ th inch is recommended.		●	
Pre-Cast Panels	Verify Brick System Requirements Form Liner: Architectural Polymers, Innovative Brick Systems LLC, Advanced Formliners LLC	PCI compliance may be required. In some cases, PCI dimensional tolerances have been waived when products meet all other testing requirements.	●	●	●

These are recommendations only for typical applications. Always follow the requirements of your local codes and manufacturers recommendations. For more information view the BIA Tech Note 28c - www.gobrick.com/media/file/28c-thin-brick-veneer.pdf