



**MB SENTINEL**



# BOX GOBBLER WALL INSERT

Stopping Package Theft  
*in style*

817-592-0735 | [mbsentinel.com](http://mbsentinel.com)

# WHAT HOMEOWNERS LOVE

## KEYPAD ACCESS

Top quality storm interface controller combined with Stainless Steel Southco Electronic Rotary Latch offers top security

## CONVEYOR ROLLERS

Food Grade PVC with Stainless Steel Axle and Bearings

## R8 DOOR PANEL INSULATION

2" K-Flex Insulation with durable cover plate maintains heating and cooling efficiencies



# DETAILS YOU NEED

## DOOR FRAME MATERIAL

1/8-inch Aluminum

## METAL ROLLER BOTTOM ASSEMBLY

12-gauge Stainless Steel

## DOOR PANEL

Door Panel Cover: ABS 06 Black HC

Handle: 12-gauge Stainless Steel

Door Bumpers: 3/4-inch rubber attached with 2 Stainless Steel  
1/4-20 Button Head Screws

100% Interior Door Flange Seal using Resilient Polyurethane  
Foam Strip with Adhesive

Hammer Powder Coat Finish: see options below

Marine Grade Nylon Torque Hinges

## POWER REQUIREMENTS

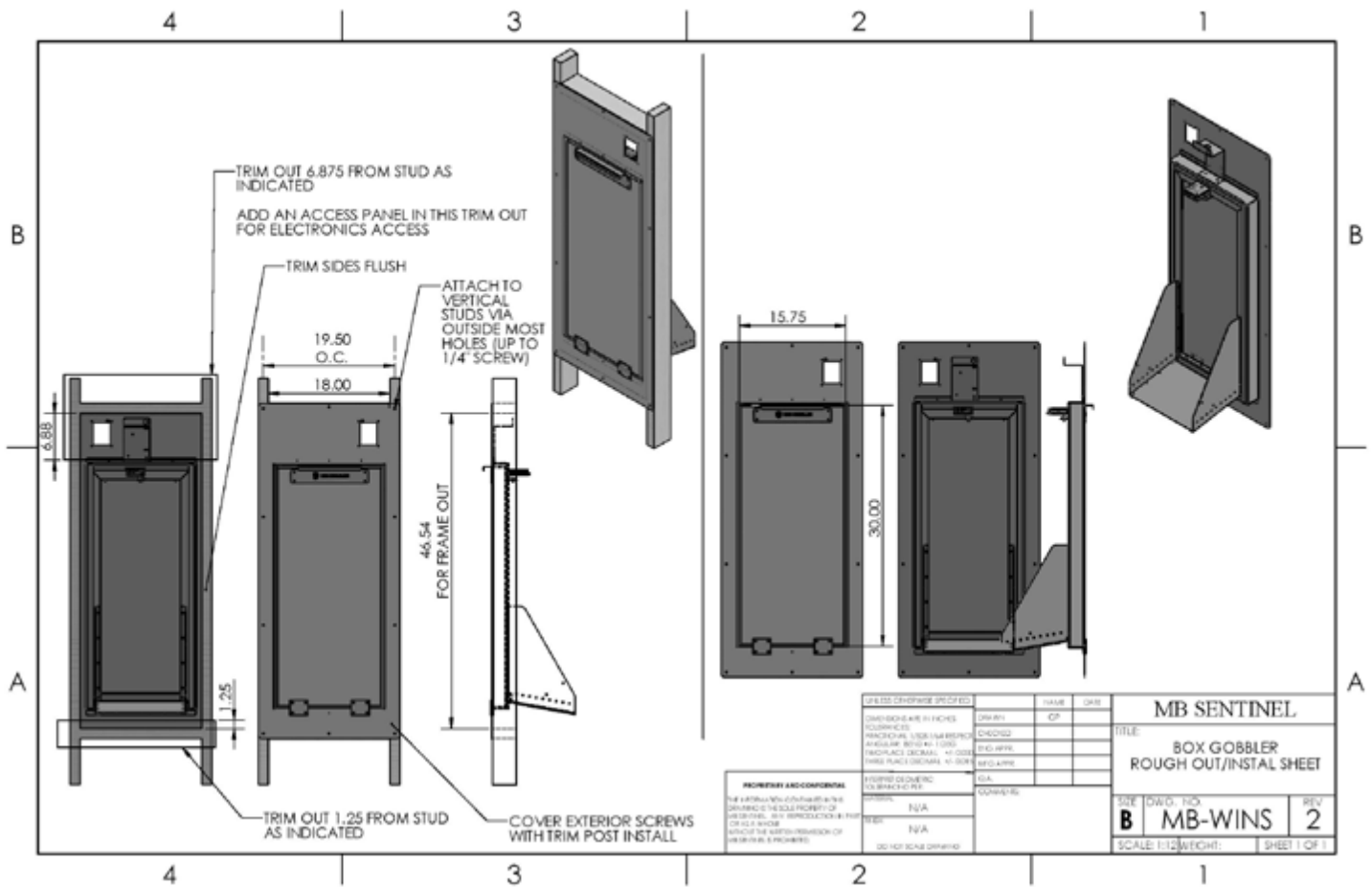
110-volt AC Circuit: connects to our terminal block from the top  
right side when facing the rear

Cover Plate: hides the power block for a clean finish (not shown)

Wire Harness: manufactured in the USA to meet UL and ULC  
standards



# EASY INSTALLATION



## LOSS PREVENTION PACKAGING

**Box 1:** door, frame and rear cover plate (protection tape guards against scratches, abrasion and paint overspray)

**Box 2:** roller bottom, keypad, lock & tech plate are pre-assembled

**Install Time:** 30 minutes or less

The door and frame ship fully assembled with a heavy zip tie to keep the door closed during framing. The pre-assembled roller bottom with the electronic lock and tech plate ship in a second box to be installed during the trim-out phase. All hardware for assembly is included for an easy and organized install.



 Box Gobbler

## SHIPPING

---

Single units ship UPS Ground

Pallets ship LTL Freight FOB

8 units will fit on a pallet



**MB SENTINEL**

CALL NOW

**817-592-0735**

Talk with one of our security experts  
about installing a Box Gobbler parcel  
safe in your next home.