

**FAST TRACK**  
system™



Museum at Prairiefire (soffit) • Overland Park, KS  
Architect of record: Verner Johnson, Inc., Boston, MA  
Local architect: Rees Masilionis Turley Architecture, Kansas City, MO

# Put your project on the fast track.



Kirkland Cancer Center (parking structure) • Jackson, TN  
Architect: Davis-Stokes Collaborative, PC, Brentwood, TN



# Add the elegance of premium masonry to a wide variety of structures.

Acme Brick's Fast Track System™ masonry support system can transform a basic building into a structure of elegance and warmth, as well as economy. Unlike conventional stone-veneer finishes, Fast Track does not require a concrete footing to support the weight of the masonry. This feature alone can yield considerable savings.

The system weighs as little as 14 pounds per square foot. It is easily designed into new projects using conventional construction techniques or attaches to most structures using existing wall studs. (See guidelines on back page.)

## Green Values

Fast Track can help builders achieve LEED objectives. Aluminum channels and clips have at least 25% post-consumer recycled content, and the entire system can be dismantled and re-purposed as a building's uses change.

## Premium Masonry Products

Masonry panels are available in 1¼" or 1½" thickness and in a pleasing array of colors. Standard nominal sizes for Fast Track Cast panels are 16" × 24" and 8" × 24". Ask your local Acme Brick representative for the most up-to-date selection of materials, sizes, and colors. For more information visit [www.innovativebuildingproducts.com](http://www.innovativebuildingproducts.com).

## Imagine the Possibilities

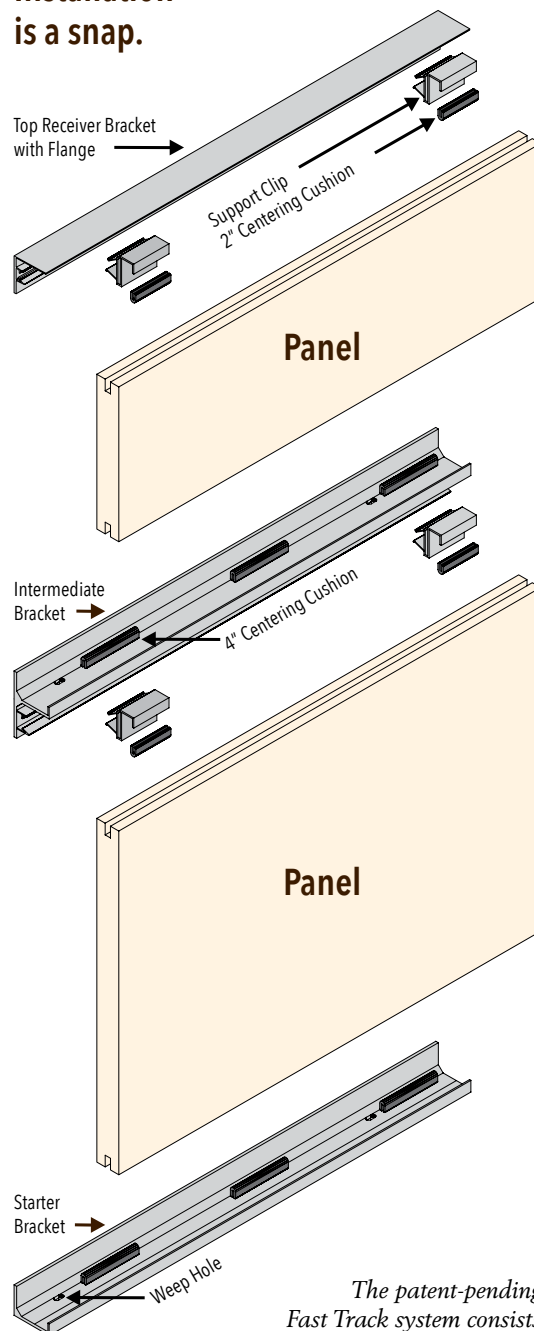
Fast Track supports many different applications: new construction or retrofit, exterior or interior. Consider these options as well:

- entries of high-end residences;
- interior accent walls for public spaces such as restaurants and lobbies; and
- horizontal applications such as soffits.

Fast Track is designed and engineered to install over CMU (see detail on facing page), precast concrete, wood stud, and metal stud walls.

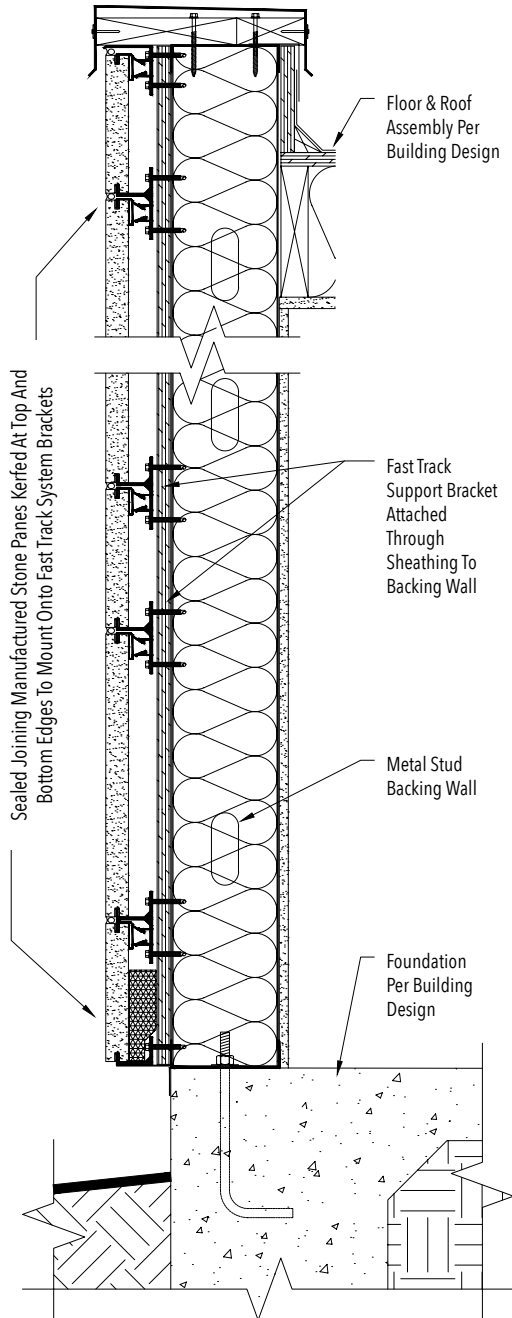
Fast Track also complements other cladding materials—including, of course, Acme Brick.

## Installation is a snap.



*The patent-pending Fast Track system consists of extruded aluminum support channels, flexible centering cushions, aluminum support clips, screws, shims, backer rod, and sealant.*

## Fast Track System over Metal Frame Wall



*Detail drawings and expert technical assistance are available from Acme Brick's in-house engineering department.*

## Simple Installation

Once the starter channel is installed, transition channels are secured from bottom to top—ending with a top receiver channel with an integrated drip edge. The stone units themselves slide or click into place for a sturdy, secure fit.

To complete the installation, backer rod is set in each joint and sealed with job-specified sealant, available in a variety of colors.

*For current color and material selection, ask your local representative.*



*Flexible centering cushions are set on the lip of each channel...*



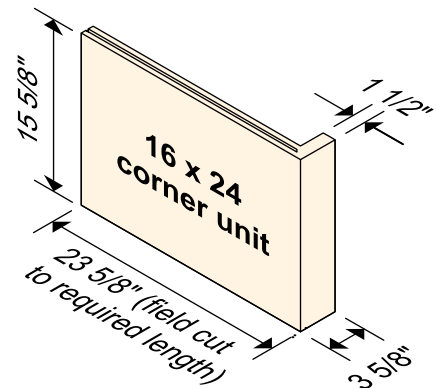
*...and over the lip of each support clip, to assure a secure fit.*

## Turn Corners with Grace and Precision

L-shaped corner units (right) offer a nominal 4-inch return. They install securely, using the same clips and cushions as regular units.

For architects who seek a clean, modern appearance, corners can also be formed using standard Fast Track units.

Ask your Acme Brick representative or distributor for details of recent Fast Track applications, and get ready to put your creativity on the fast track.





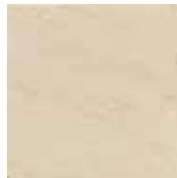
## Texas Limestone



Texas White



Texas Cream



Cordova Cream



Leuders Buff



Leuders Charcoal

## RockCast Stone



Crystal White



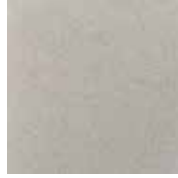
Silver



Smokehouse



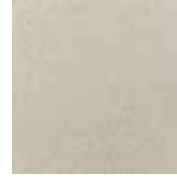
Shadow



Buffstone



Charlotte Tan



Riesling



Creme Buff



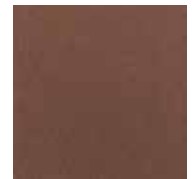
Starbuck



Driftwood



Brownstone



Merlot

## General Structural Guidelines

Structural Material of Backing Wall	Backing Wall Requirements	Fastener/Anchor Recommendation
Wood Stud (i)	Sect. 2308 of IBC and local building codes	¼" dia. S.S. wood screw with 1½" min. penetration into backing wall
Steel Stud (ii)	Sect. 2211 of IBC and local building codes	#10 S.S. screws
CMU: Hollow Core Grout Filled Hollow Core (iii) Ground Joint (iv)	Sect. 2109 of IBC and local building codes	¼" dia. S.S. Powers Lok-Bolt with 1 1/8" embedment, 3¾" min. edge dist., & 8" min. end dist. @ hollow or filled core CMU (x)
		¼" dia. Hilti HLC Sleeve with 1" embedment & 4" min. edge distance @ grout joint
Clay Brick (v): Solid or Cored Grout Joint (iv)	Sect. 2109 of IBC and local building codes	¼" dia. S.S. Powers Lok-Bolt with 1 1/8" embedment, 4" min. edge dist., & 4" min. end dist. @ clay brick (x)
		¼" dia. Hilti HLC Sleeve with 1" embedment & 4" min. edge distance @ grout joint
Concrete (vi)	Chapter 19 of IBC and local building codes	¼" dia. S.S. Hilti Kwik Bolt 3 with 2" embedment & 3" min. edge distance (x)
(x) Alternative Fastener/Anchor Recommendations		
CMU: Grout Filled Hollow Core (iii)		¼" dia. S.S. Powers Wedge Bolt with 2" embedment, 3¾" min. edge dist., & 3¾" min. end dist. @ filled core CMU
Clay Brick (v): Solid Brick Without Coring Only		¼" dia. S.S. Powers 'Double' Shield Expansion Anchor with 1¼" embedment, 4" min. edge dist., & 4" min. end dist.
Concrete (vi)		¼" dia. S.S. Powers Wedge Bolt with 2" embedment & 2" min. edge distance or ¼" dia. S.S. Powers Tapper with 1½" embedment & 2" min. edge distance

### Notes:

- (i) Based on use of spruce, pine, or fir wood species
- (ii) Studs to be minimum 16 gauge steel with 33 ksi yield stress
- (iii) Hollow core CMU to be filled with minimum 1500 psi strength grout

- (iv) Grout to have a minimum compressive strength of 2000 psi
- (v) Hollow or solid clay brick to conform with ASTM C62 standard
- (vi) Concrete to have a minimum compressive strength of 3000 psi
- (x) Alternative fastener/anchors recommendations available from supplier upon request.