

CELEBRATING
1891
ACME BRICK
2024
130 YEARS



Founded by
George E. Bennett
1891



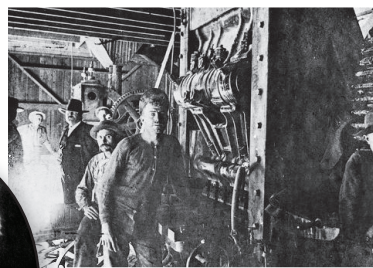
Bennett plant workers in the updraft kiln



1890 First Acme Pressed Brick Office



Second
President
Ralph Root



Bennett plant machine room

1918 Acme partnership
with Elgin-Standard
Brick Company

AGME BRICK
1920s logo



Popular 1920s brick home



1920 New plant outside Denver CO



1920s-50s logo

1933 Production halted at Denton
& Perla plants, Malvern plant closes

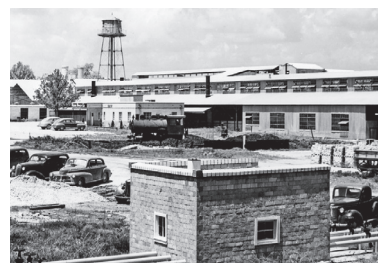
1930 Plant closures of Little Rock, Pine
Bluff, & Wichita Falls, sixteen sales
office closures



1930s-40s Walter Bennett, Jr. (second from
right seated) & Fort Worth's business leaders



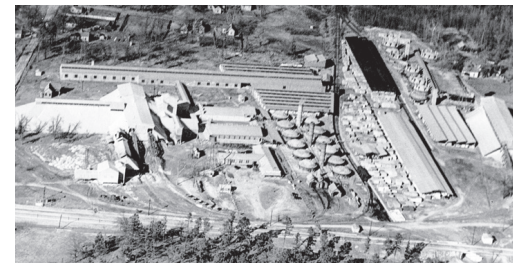
1938 employees



1940s Perla Plant

Acme

1950s-early 1960s logo



Postwar Perla Brick Plant



1951 employees

1945 Acme purchases
the Bishop Brick Company & the
Garrison Vitrefied Brick Company

1942
**makes & ships 100
million brick per year**

1954 Acme purchases Buffalo Brick & Tile in
Buffalo, Kansas, plants in Alexandria, Louisiana,
and Waskom TX from Tri-State Brick Company

1958 Acme purchases plants in Kanopolis and
Great Bend from Great Bend Brick & Tile in KS

ACME BRICK COMPANY
early 1960s logo



mid 1960s logo

1965
**makes & ships
433 million
brick per year**



1960s unloading process



1960s kiln temperature controls



1965 employees in hard hats



1973 Tulsa OK & McQueeney TX plants open
& close with demand

ACME BRICK
1970s logo



1983 new product meeting



1985 Tulsa Plant Grand Opening
making special shapes, architectural brick & pavers

ACME BRICK
1980s logo

1980-82 Recession
causes plants
idle and reopen



1987 employees at sales training



1990s Troy Aikman ads,
Official Brick campaigns,
Pat Summerall radio ads



1999
Harold Melton
becomes president

**makes & ships
1 BILLION
brick this year**

1994 Acme purchases
American Tile Supply Company

1996 New plant at Bennett TX
with 552ft gas-fired kiln - longest in US

1997 Acme acquires **brick.com**



1997 Acme purchases
Innovative Building Products



2005
Dennis Knautz
becomes president and CEO

2008
Acme becomes largest US
brick manufacturer by volume
purchases Ochs Brick plant, office
& McFarlane Stone both of MN



2000 Elgin Handmades plant opens

2000 Acme purchases Eureka Brick
& Wheeler Brick in Arkansas



2013 Acme Brick
Vision app launched



2002 Acme Brick Brick Boy
mascots introduced

2011 Cultural Beliefs
defined and adopted
Acme purchases
Jenkins Brick Company, AL

2014 New sales offices
in Southeast Louisiana

2016 New sales
office in Northwest
Arkansas

IBP
INNOVATIVE BUILDING PRODUCTS™
an ACME BRICK company

2021 IBP rebranded
to offer cladding, stone,
thin brick and more

2020 Purchased products
amount for a larger part
of Acme's sales than ever
Acme Cladding Services
Unit started



2023
Ed Watson
becomes president and CEO

2019 - Covid Pandemic

1900

1910

1920

1930

1940

1950

1960

1970

1980

1990

2000

2010

PRESENT

1890s
**makes & ships
2 million
brick per year**



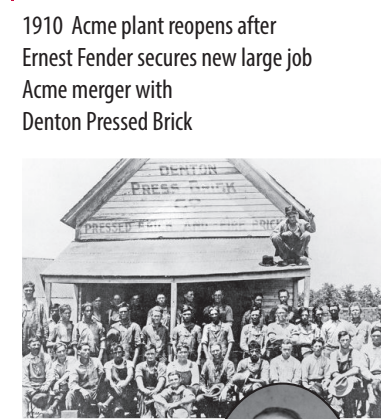
1907 Beehive kilns at Denton Plant



1901 First large
commercial project



1913 New office in Fort Worth



H. L. Frost,
first manager
from Denton
Pressed Brick

1916
Restructured & renamed
Acme Brick Company



Third President
Walter R. Bennett

1923 Acme
merger with
Fort Smith
Brick Company

1924 Acme purchase
of Oklahoma-based
American Brick &
Tile Company



1924 Oklahoma City Plant

1926
New plant in Tulsa OK
Acme purchase of the
Arkansas Brick & Tile Company



**makes & ships
140 million
brick per year**



**1919
makes & ships
16 million
brick per year**

1919 - 1952 HQ moved to
Neil P. Anderson Building, Fort Worth

**ACME
BRICK COMPANY**
1930s-40s print logo

1935
Reopening of Bridgeport &
Ferris plants through New Deal

"Acme suffered its greatest loss of
the depression" with the death of
Walter Bennett

Senior VP William Bryce
becomes President and
restructures creating
a Board of Directors

**makes & ships
20 million
brick per year**



1940
James Ernest
Fender made
President

Bryce becomes
chairman of the
Board of Directors



1946 Garrison TX Plant

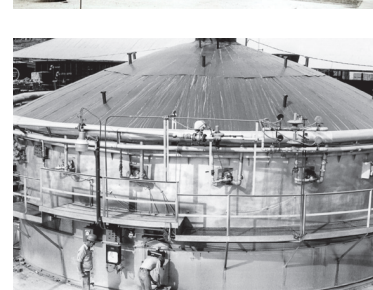


1940s-early 1960s logo

1943-1945
POWs were employed to meet
military manufacturing needs

1944 Acme purchases
Clinton OK plant from
Western Brick Company

1952 Acme moves into new
headquarters on W. 7th St.
Fort Worth TX



1950s kiln maintenance



1959 Neil Boldrick
takes over after Fender retires,
modernization of Malvern,
opens El Paso sales & more

1961
D.O. Tomlin installed as president
Acme purchases Fraser Brick &
Tile Company of San Antonio TX

1963 Acme acquires United
Brick Division of Martin-
Marietta, expanding further
into MO, KS, OK

Denton plant renovated and
opened

1967 fully automated Perla
East Gate plant opened in AR



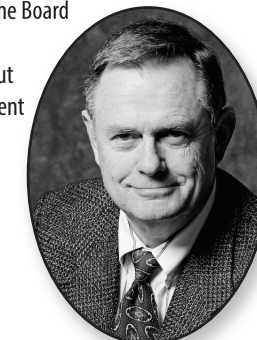
1960s kiln at Perla plant



1969 D. O. Tomlin, left,
and John Justin signed the
merger agreement between
Acme Brick Company & Justin
Companies to become part of
First Worth Corporation

Plants closed in Oklahoma
City, Harrisonville MO, and
Ferris TX

John Justin takes over as
president of Acme Brick



1972 First Worth Corporation becomes
Justin Industries, Inc., Justin moves to
Chairman of the Board

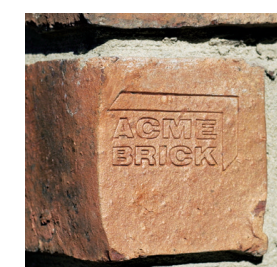


Edward L. Stout
named president
of Acme Brick
Company

1975 Alpha Cargo Motor Express
(ACME) fleet created

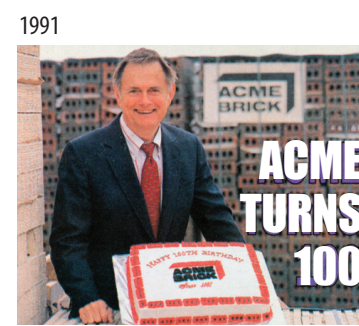
1978
**makes & ships
550 million
brick per year**

1983 BRIX computer sales & inventory
system implemented under
Dennis Knautz, Ed Stout
**makes & ships
600 million
brick per year**



1987 Acme begins stamping name
into residential brick

ACME BRICK
Since 1891
1989-2011 logo



Acme acquires Elgin Butler
face brick plant near Austin TX



1994
instituted the
100-Year
Guarantee

2000
Acme becomes part of
Warren Buffett's
Berkshire Hathaway



late 1980-90s Acme increases sales of
non-manufactured products

1998 Acme acquires Witt Brick
& Supply in Temple TX,
Texas Clay plants in Malakoff TX

2001 Acme purchases Holly Springs MS
Hanson Brick plant, Laufen Int'l tile center OK,
Denver Brick Company

"Brick could have been
my best investment ever."



2007 Acme's new Fort Worth
General Office headquarters opens

2010-13 Acme dabbles in
floor/tile stores called Patina

2013 Bennett plant reopens

**ACME
BRICK**
brick.com
2011 - present logo

TILE & STONE
2013 American Tile Supply
merged into Acme Brick Tile & Stone



2007 "Baby Clay" worlds largest brick born

**2024
Acme Brick Stats:
15 Plants
50+ Sales Offices
~2000 Associates
900 Million Brick Per Year**



2016 Ivan "Pudge" Rodriguez
Acme's new spokesperson

2023 - Ed Watson - Present